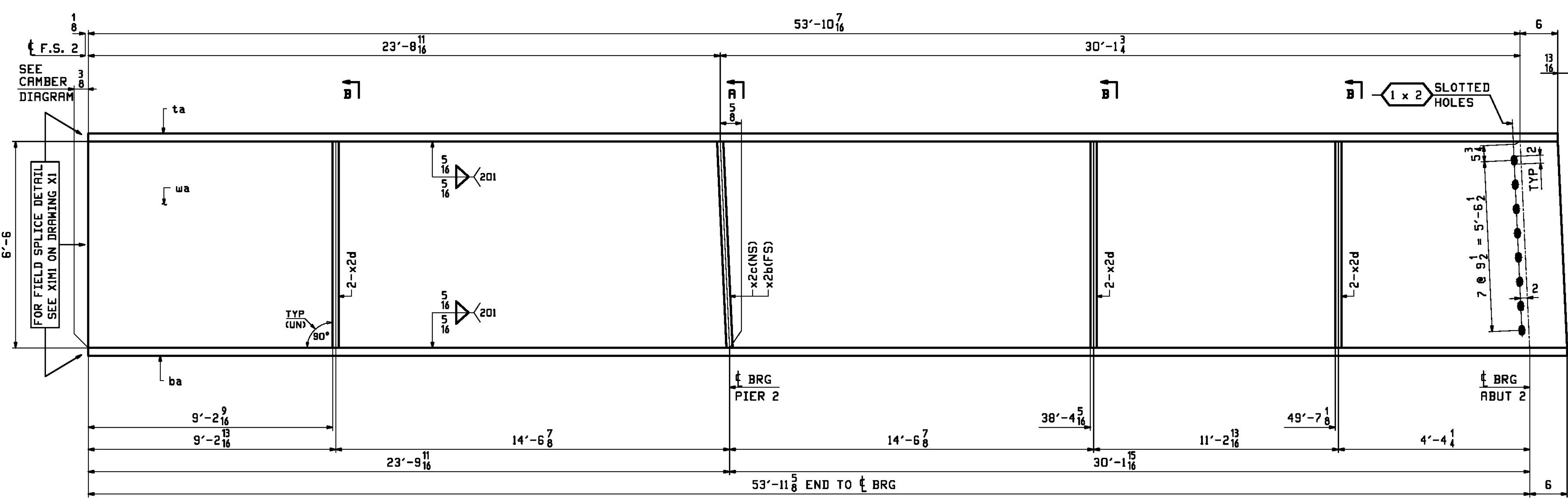


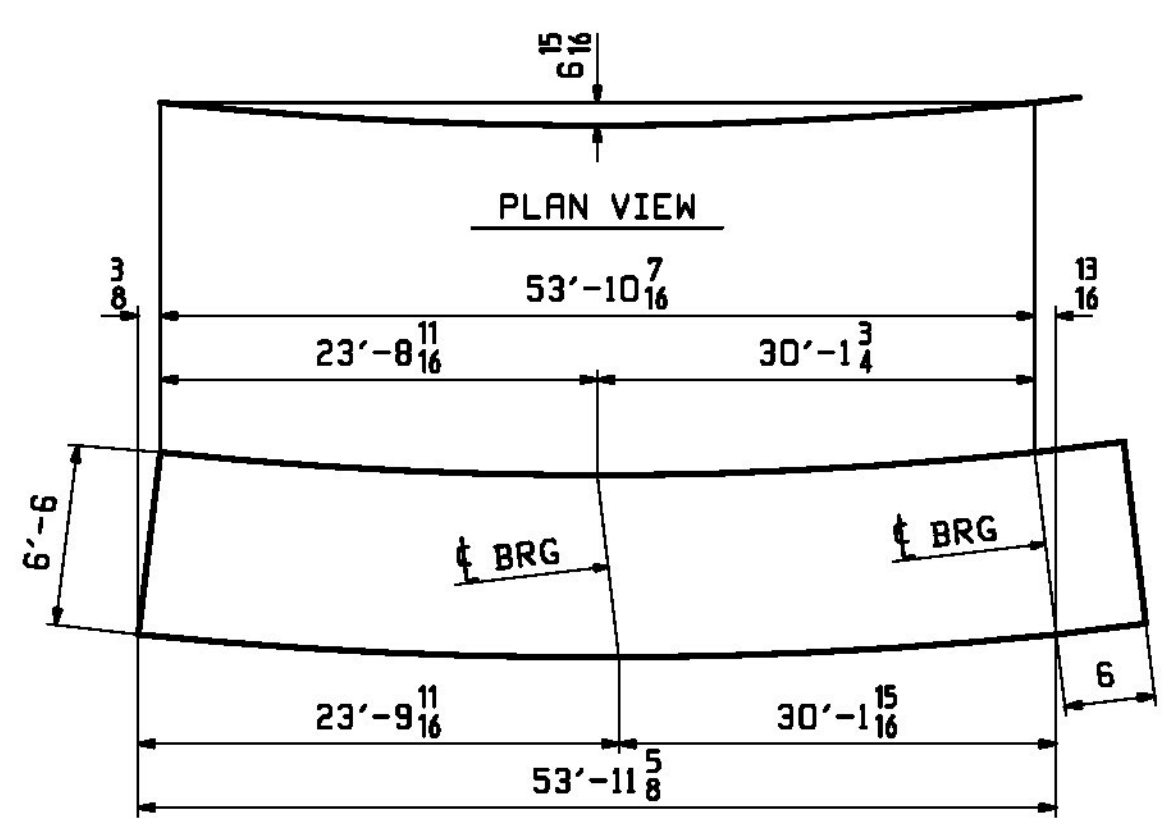
RBM INFO		BILL OF MATERIAL				JOB NO.	DRAWING NO.	REV.
						713	12	
PAGE LINE	MARK	QTY	MARK	MATERIAL	LENGTH FT INCHES	REMARKS	WT	PROCUREMENT NOTES
	12G2C	1		GIRDER			19290	
2	W	1	wa	PL 1/8x78	54 5/8	M270-SDWT2	9939	
1	W	1	ta	PL 1/8x20	54 7/16	M270-SDWT2	4163	
1	U	1	ba	PL 1/8x20	54 5/8	M270-SDWT2	4170	
4	L	1	x2b	PL 1x9 1/2	6 6	(M/E) M270-SDW	210	
4	L	1	x2c	PL 1x9 1/2	6 6	(M/E) M270-SDW	210	
4	M	6	x2d	PL 2x9	6 6	M270-SDW	100	



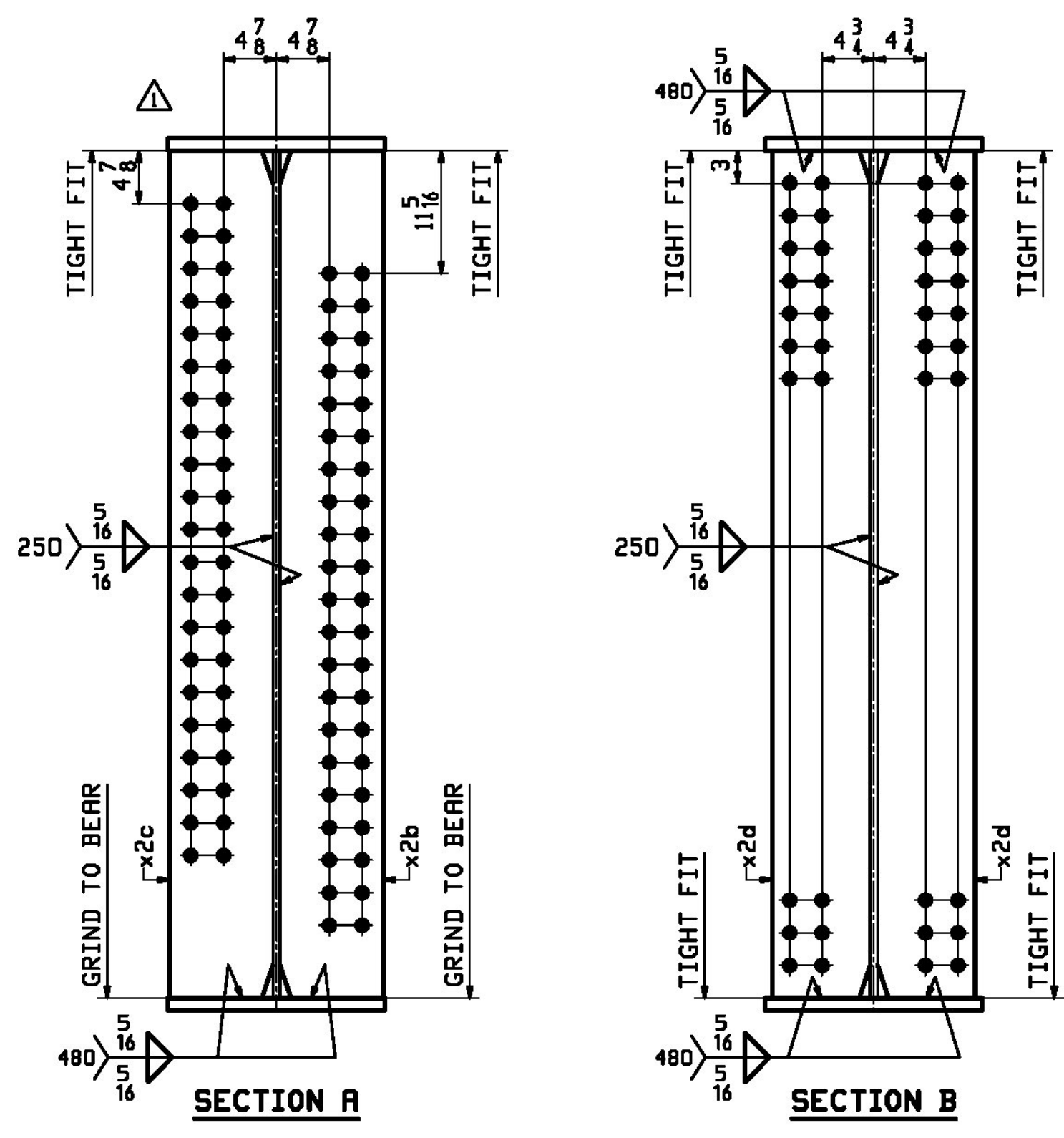
SEE CAMBER DIAGRAM

**ONE - GIRDER - 12G2C (DEVELOPED)**

FOR FIELD SPLICE DETAILS SEE DRAWING X1.  
 FOR GIRDER STANDARDS SEE DRAWING X2.  
 FOR CAMBER DIAGRAM SEE DRAWING C1.  
 FOR FLANGE DIAGRAMS SEE DRAWING F1.  
 FOR GENERAL NOTES SEE DRAWING GNI.  
 T2 DENOTES MATERIAL SUBJECT TO CHARPY V-NOTCH TESTING.  
 FOR HORIZONTAL CURVING DIAGRAMS SEE DRAWINGS HCI.



DEV. ORIENTATION DIAGRAM FOR CAMBER SEE DRAWING C1



Vermont Agency of Transportation  
**RECEIVED**  
 106-17\_713\_Shop\_Drawing\_REV2.pdf  
 CK'D BY CLB OK'D BY CWC  
 October 5, 2017  
 RESUBMIT NO Approved  
 BY C. CARLSON DATE 10/05/17

9/19/17	APPROVAL COMMENT	JTB	WJL		
REV. DATE	REMARKS	DWN	CHK	APVL	SHOP
MATERIAL:	SURFACE PREP. & PAINT:	HOLES:		SHOP BOLTS:	
M270-SDW (UN)	SEE DWG GNI	1 1/2" Ø (UN)		NONE	
DESCRIPTION: GIRDER - 12G2C					
		CASCO BAY STEEL STRUCTURES, INC. 1 WALLACE AVE. PHONE (207) 780-6722 SOUTH PORTLAND, ME 04106 FAX. (207) 780-6726			
STRUCTURE: VT RTE 15A OVER LAMOILLE RIVER		DRAWN: JTB		DATE: 08/02	
ROUTE No. VT 15A, MAJOR COLLECTOR		CHKD: WJL		DATE: 08/30	
BRIDGE No. 1		JOB NO. 713		DWG NO. 12	
COUNTY OF LAMOILLE		CUSTOMER: STATE OF VERMONT R.O.T.		REV. 12	

173 106-17\_713\_Shop\_Drawing\_REV2.pdf