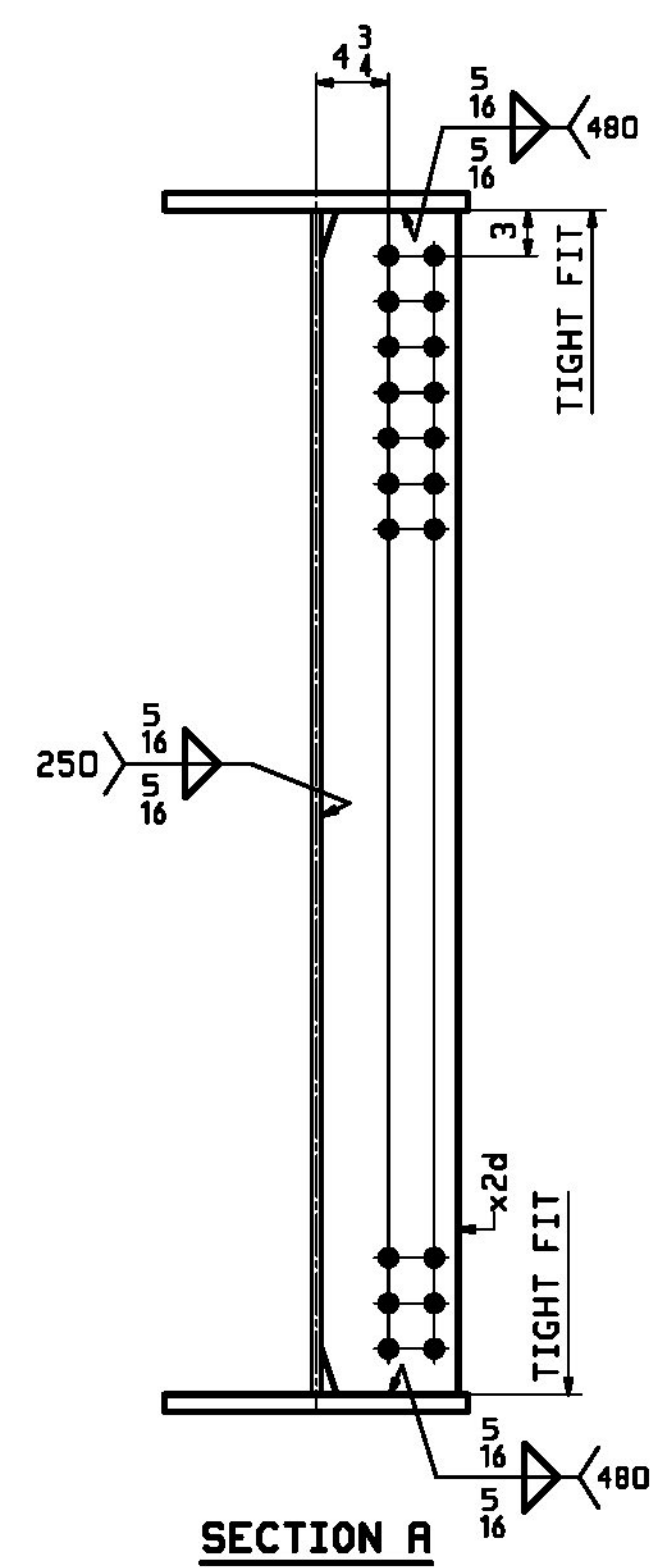
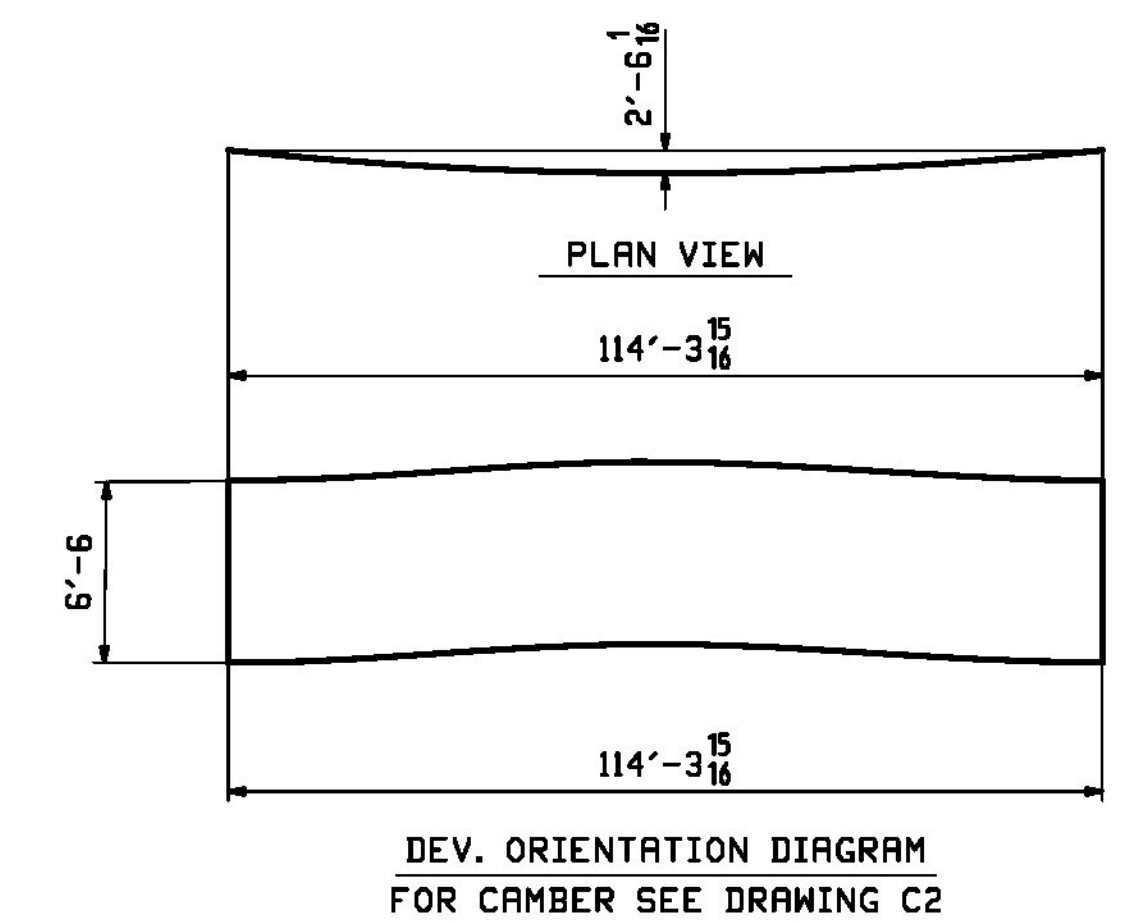


ONE - GIRDER - 10G5B (DEVELOPED)

FOR FIELD SPLICE DETAILS SEE DRAWING XI.
 FOR GIRDER STANDARDS SEE DRAWING X2.
 FOR CAMBER DIAGRAM SEE DRAWING C2.
 FOR FLANGE DIAGRAMS SEE DRAWING F2.
 FOR GENERAL NOTES SEE DRAWING GNI.
 T2 DENOTES MATERIAL SUBJECT TO CHARPY V-NOTCH TESTING.
 FOR HORIZONTAL CURVING DIAGRAMS SEE DRAWINGS HCI.



RBM INFO		BILL OF MATERIAL				JOB NO.	DRAWING NO.	REV.
PAGE LINE	MARK	QTY	MARK	MATERIAL	LENGTH FT INCHES	REMARKS	WT	PROCUREMENT NOTES
	10G5B	1		GIRDER				44029
3	A	1	wa	PL 1 ¹ / ₈ x7 ⁸	59'-2 ¹⁵ / ₁₆	M270-SDW		100811
3	C	1	wb	PL 1 ¹ / ₈ x7 ⁸	55'-1 ¹ / ₁₆	M270-SDW		10053
1	Y	1	ta	PL 1 ¹ / ₈ x20	55'-1 ¹ / ₁₆	M270-SDW		4218
1	G	1	tb	PL 1 ¹ / ₈ x20	55'-2 ⁷ / ₈	M270-SDW		4536
1	C	1	ba	PL 1 ³ / ₄ x20	55'-1 ¹ / ₁₆	M270-SDW		6561
1	A	1	bb	PL 1 ³ / ₄ x20	59'-2 ⁷ / ₈	M270-SDW		7055
4	M	8	x2d	PL 1 ¹ / ₂ x3	6'-6"	M270-SDW		100



Vermont Agency of Transportation
RECEIVED
 CK'D BY CLB OK'D BY CWC
 October 5, 2017
 RESUBMIT NO Approved
 BY C. CARLSON DATE 10/05/17

REV.	DATE	REMARKS	DWN	CHK	APVL	SHOP
0						
MATERIAL:		SURFACE PREP. & PAINT:	HOLES:		SHOP BOLTS:	
M270-SOW (UN)		SEE DWG GNI	1 ⁵ / ₁₆ " Ø		NONE	
DESCRIPTION:		GIRDER - 10G5B				
STRUCTURE:		DRAWN:		DATE:		
VT RTE 15A OVER LAMOILLE RIVER		JTJ		08/02		
ROUTE No. VT 15A, MAJOR COLLECTOR		CHKD:		DATE:		
BRIDGE No. 1		WJL		08/30		
COUNTY OF LAMOILLE		JOB NO.		DWG NO.		
LOCATION: MORRISTOWN, VT		713		10		
PROJ NO. BRS-0240(3)S & STP HES Q30-2(28)		STATE OF VERMONT R.O.T.		REV. Δ		

CASCO BAY STEEL STRUCTURES, INC.
 1 WALLACE AVE. PHONE (207) 780-6722
 SOUTH PORTLAND, ME 04106 FAX. (207) 780-6726