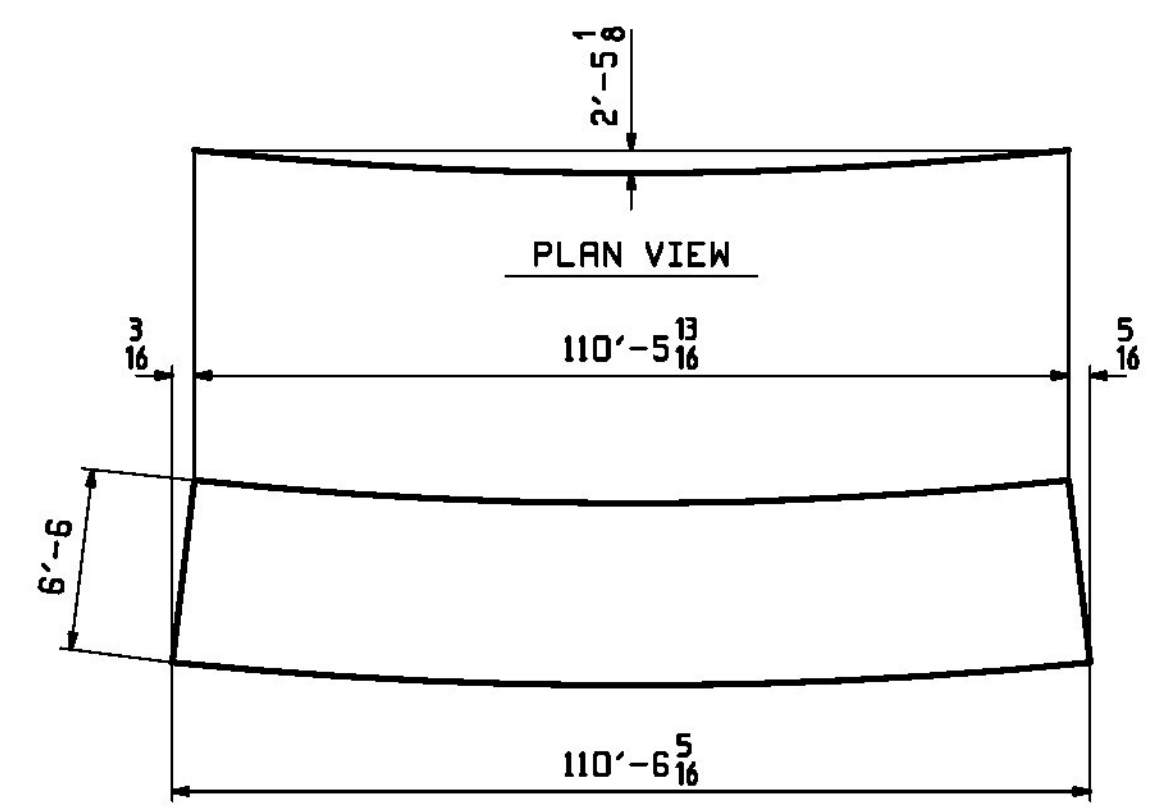


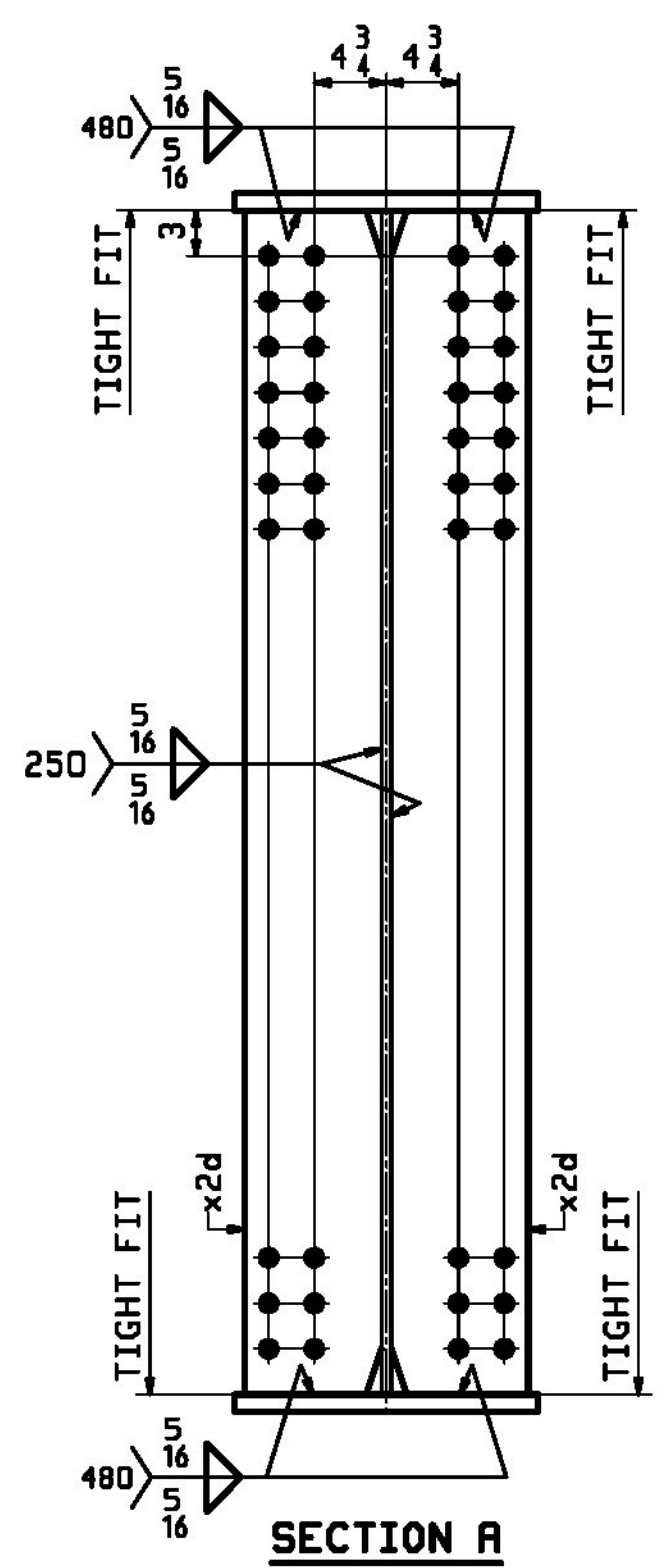
RBM INFO		BILL OF MATERIAL				JOB NO.	DRAWING NO.	REV.	
PAGE	LINE	MARK	QTY	MARK	MATERIAL	LENGTH FT INCHES	REMARKS	HT	PROCUREMENT NOTES
		7G2B	1		GIRDER				34921
3	A		1	wa	PL 1/2 x 78	59'-2 7/8	M270-SDW		10810
3	J		1	wb	PL 1/2 x 78	51'-3 1/4	M270-SDW		9358
2	J		1	ta	PL 3/8 x 20	51'-2 1/2	M270-SDW		3052
2	E		1	tb	PL 3/8 x 20	59'-2 7/8	M270-SDW		3528
2	J		1	ba	PL 3/8 x 20	51'-3 1/4	M270-SDW		3054
2	E		1	bb	PL 3/8 x 20	59'-2 7/8	M270-SDW		3528
4	M		16	x2d	PL 1/2 x 3	6'-6	M270-SDW		100

**ONE - GIRDER - 7G2B (DEVELOPED)**

FOR FIELD SPLICE DETAILS SEE DRAWING X1.  
 FOR GIRDER STANDARDS SEE DRAWING X2.  
 FOR CAMBER DIAGRAM SEE DRAWING C2.  
 FOR FLANGE DIAGRAMS SEE DRAWING F2.  
 FOR GENERAL NOTES SEE DRAWING GNI.  
 T2 DENOTES MATERIAL SUBJECT TO CHARPY V-NOTCH TESTING.  
 FOR HORIZONTAL CURVING DIAGRAMS SEE DRAWINGS HCI.



DEV. ORIENTATION DIAGRAM FOR CAMBER SEE DRAWING C2



SECTION A

Vermont Agency of Transportation  
**RECEIVED**  
 CK'D BY CLB OK'D BY CWC  
 October 5, 2017  
 RESUBMIT NO Approved  
 BY C. CARLSON DATE 10/05/17

REV.	DATE	REMARKS	DWN	CHK	APVL	SHOP
0						
MATERIAL:		SURFACE PREP. & PAINT:	HOLES:		SHOP BOLTS:	
M270-SOW (UN)		SEE DWG GNI	1 5/16" Ø		NONE	
DESCRIPTION:		GIRDER - 7G2B				
STRUCTURE:		DRAWN:		DATE:		
VT RTE 15A OVER LAMOILLE RIVER		JTB		08/02		
ROUTE No. VT 15A, MAJOR COLLECTOR		CHKD:		DATE:		
BRIDGE No. 1		WJL		08/30		
COUNTY OF LAMOILLE		JOB NO.		DWG NO.		
LOCATION: MORRISTOWN, VT		713		7		
PROJ NO. BRS-0240(3)S & STP HES Q30-2(28)		CUSTOMER: STATE OF VERMONT R.O.T.		REV. <u>△</u>		

**CASCO BAY STEEL STRUCTURES, INC.**  
 1 WALLACE AVE. PHONE (207) 780-6722  
 SOUTH PORTLAND, ME 04106 FAX. (207) 780-6726

173 F:\17\_713\_081017.dwg 10/5/17 10:51:17 AM