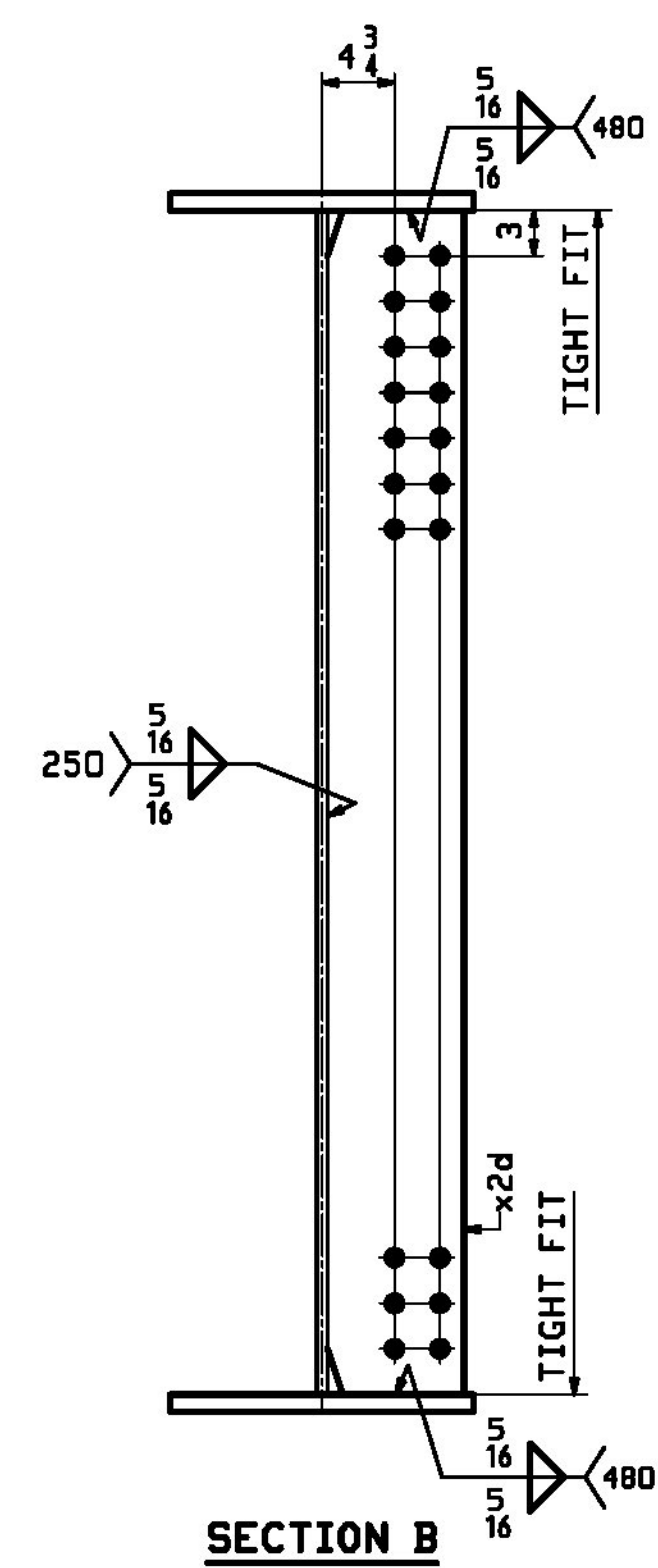
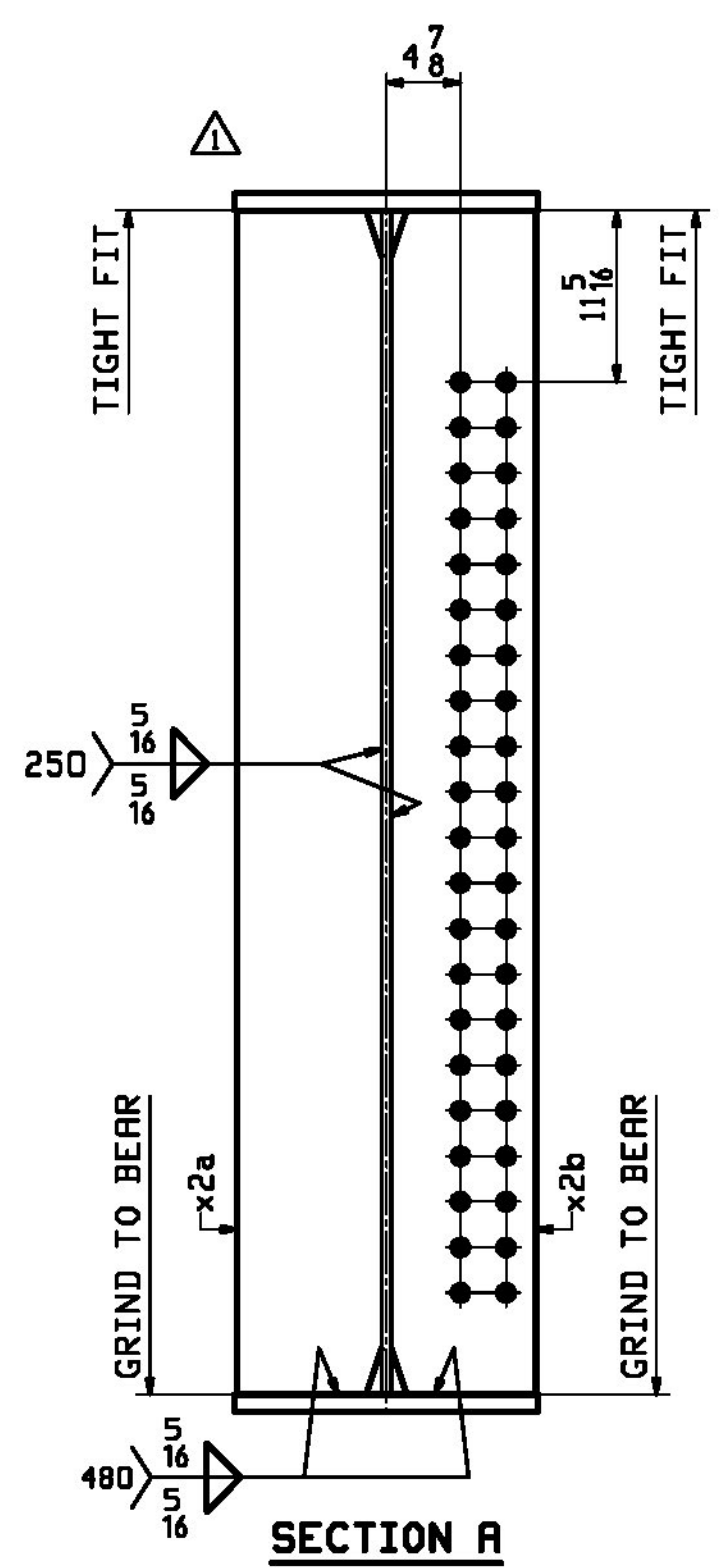
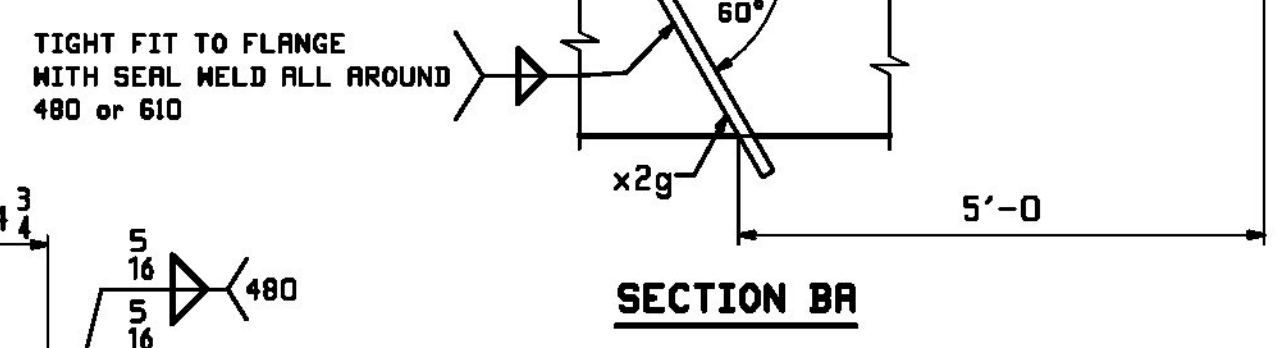
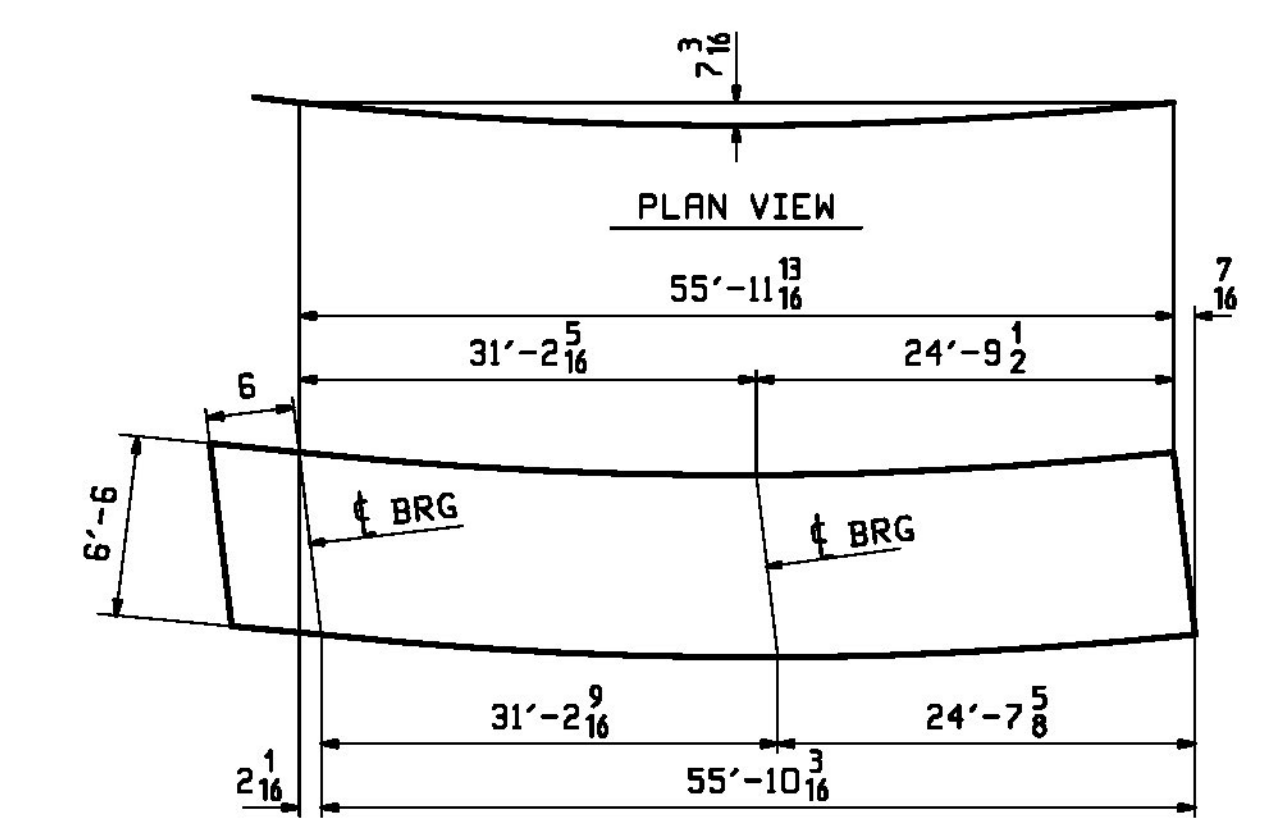


RBM INFO		BILL OF MATERIAL				JOB NO.	DRAWING NO.	REV.	
PAGE	LINE	MARK	QTY	MARK	MATERIAL	LENGTH FT INCHES	REMARKS	WT	PROCUREMENT NOTES
		5G5A	1		GIRDER			19674	
2	N		1	wa	PL 1/8 x 78	56 6 1/8	M270-SDW	0314	
1	J		1	ta	PL 1/8 x 20	56 5 1/8	M270-SDW	4325	
1	J		1	ba	PL 1/8 x 20	56 4 1/8	M270-SDW	4314	
4	L		1	x2a	PL 1 x 9 1/2	6 6	(M/E) M270-SDW	210	
4	L		1	x2b	PL 1 x 9 1/2	6 6	(M/E) M270-SDW	210	
4	M		3	x2d	PL 2 x 9	6 6	M270-SDW	100	
4	N		1	x2g	PL 4 x 3 3/8	1 1 1/4	M270-SDW	3	

**ONE - GIRDER - 5G5A (DEVELOPED)**

FOR FIELD SPLICE DETAILS SEE DRAWING XI.  
 FOR GIRDER STANDARDS SEE DRAWING X2.  
 FOR CAMBER DIAGRAM SEE DRAWING C1.  
 FOR FLANGE DIAGRAMS SEE DRAWING F1.  
 FOR GENERAL NOTES SEE DRAWING GNI.  
 T2 DENOTES MATERIAL SUBJECT TO CHARPY V-NOTCH TESTING.  
 FOR HORIZONTAL CURVING DIAGRAMS SEE DRAWINGS HCI.



Vermont Agency of Transportation  
**RECEIVED**  
 CK'D BY CLB OK'D BY CWC  
 October 5, 2017  
 RESUBMIT NO Approved  
 BY C. CARLSON DATE 10/05/17

APPROVAL	9/19/17	APPROVAL COMMENT	JTB	WJL		
REV.	DATE	REMARKS	DWN	CHK	APVL	SHOP
MATERIAL:	SURFACE PREP. & PRINT:	HOLES:	SHOP BOLTS:			
M270-SDW (UN)	SEE DWG GNI	1 1/2" Ø (UN)	NONE			
DESCRIPTION:	GIRDER - 5G5A					
		<b>CASCO BAY STEEL STRUCTURES, INC.</b> 1 WALLACE AVE. PHONE (207) 780-6722 SOUTH PORTLAND, ME 04106 FAX. (207) 780-6726				
STRUCTURE:	VT RTE 15A OVER LAMOILLE RIVER	DRAWN:	JTB	DATE:	08/02	
	ROUTE No. VT 15A, MAJOR COLLECTOR	CHKD:	WJL	DATE:	08/30	
	BRIDGE No. 1					
	COUNTY OF LAMOILLE					
LOCATION:	MORRISTOWN, VT	JOB NO.	713			
PROJ NO.	BRS-0240(3)S & STP HES 030-2(28)	DWG NO.	5			
CUSTOMER:	STATE OF VERMONT R.O.T.	REV.	A			