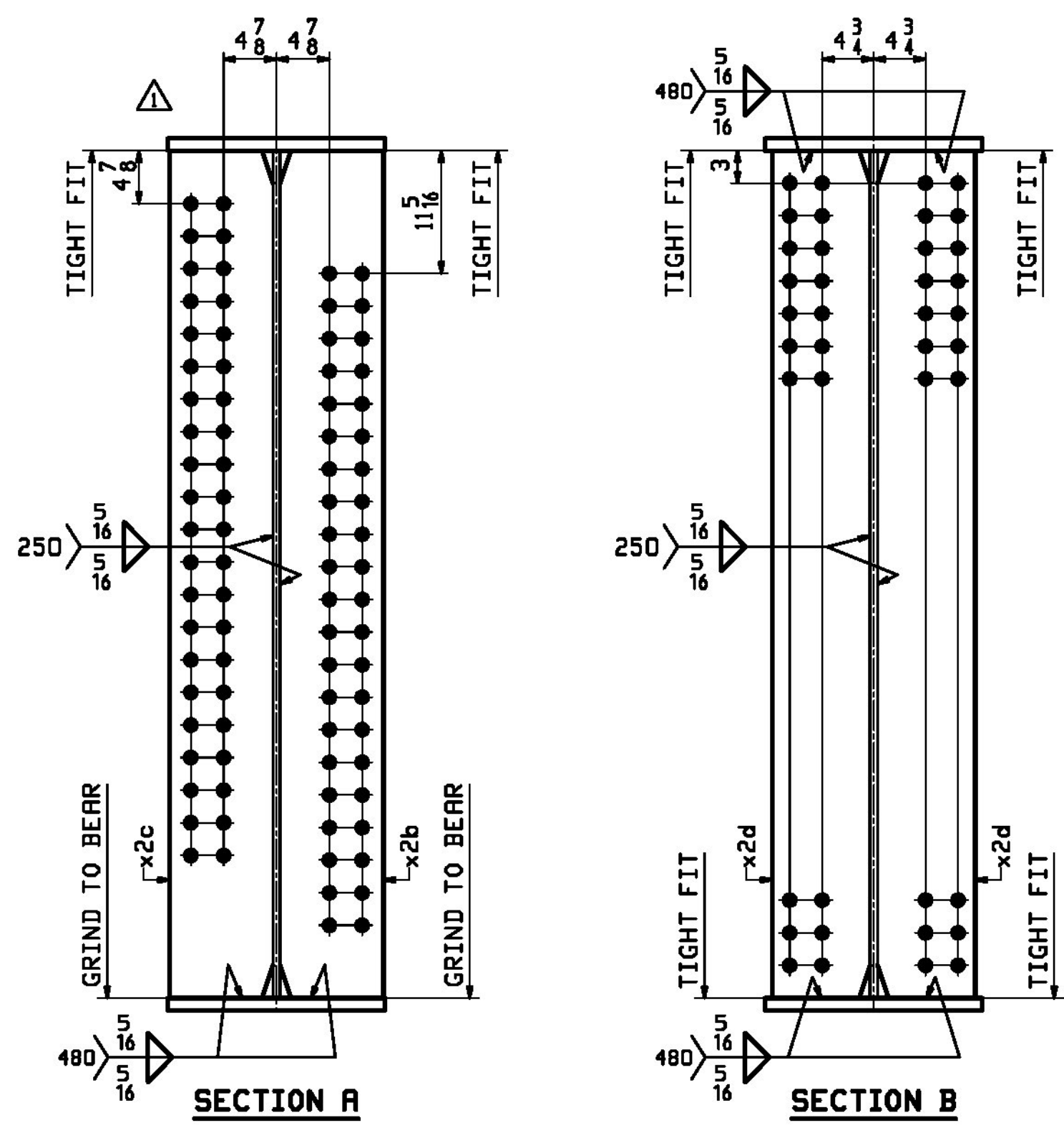
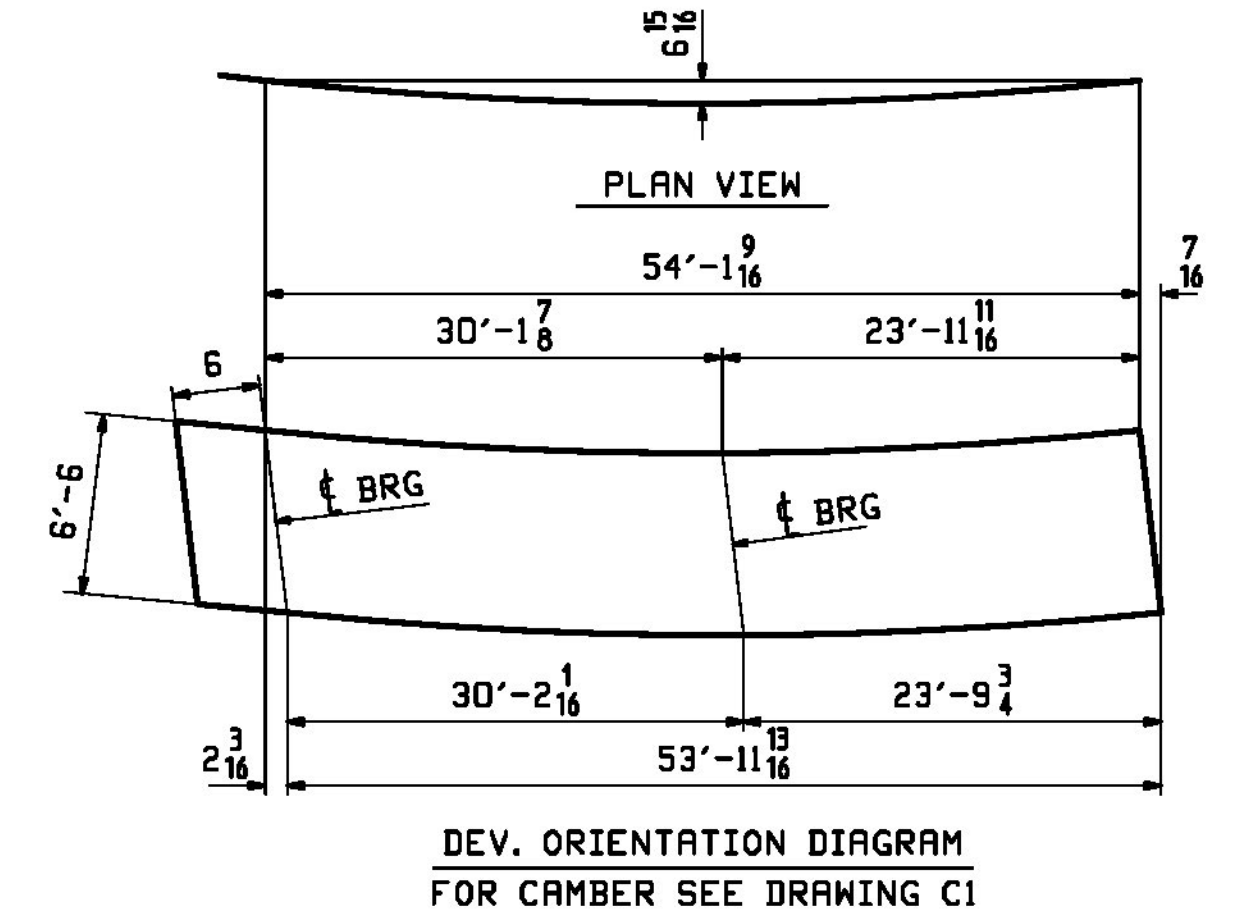


RBM INFO		BILL OF MATERIAL				JOB NO.	DRAWING NO.	REV.
						713	2	
PAGE LINE	MARK	QTY	MARK	MATERIAL	LENGTH FT INCHES	REMARKS	WT	PROCUREMENT NOTES
	2G2A	1		GIRDER			19347	
2	W	1	wa	PL 1 1/8 x 7/8	54 8	M270-SDWT2	9975	
1	U	1	ta	PL 1 1/8 x 20	54 7 1/8	M270-SDWT2	4183	
1	U	1	ba	PL 1 1/8 x 20	54 5 1/8	M270-SDWT2	4171	
4	L	1	x2b	PL 1 x 9 1/2	6 6	(M/E) M270-SDW	210	
4	L	1	x2c	PL 1 x 9 1/2	6 6	(M/E) M270-SDW	210	
4	M	6	x2d	PL 2 x 9	6 6	M270-SDW	100	

ONE - GIRDER - 2G2A (DEVELOPED)

FOR FIELD SPLICE DETAILS SEE DRAWING XI.
 FOR GIRDER STANDARDS SEE DRAWING X2.
 FOR CAMBER DIAGRAM SEE DRAWING C1.
 FOR FLANGE DIAGRAMS SEE DRAWING F1.
 FOR GENERAL NOTES SEE DRAWING GNI.
 T2 DENOTES MATERIAL SUBJECT TO CHARPY V-NOTCH TESTING.
 FOR HORIZONTAL CURVING DIAGRAMS SEE DRAWINGS HCI.



Vermont Agency of Transportation
RECEIVED
 CK'D BY CLB OK'D BY CWC
 October 5, 2017
 RESUBMIT NO Approved
 BY C. CARLSON DATE 10/05/17

9/19/17	APPROVAL COMMENT	JTB	WJL		
REV. DATE	REMARKS	DWN	CHK	APVL	SHOP
MATERIAL:	SURFACE PREP. & PAINT:	HOLES:		SHOP BOLTS:	
M270-S0W (UN)	SEE DWG GNI	1 1/2" Ø (UN)		NONE	
DESCRIPTION: GIRDER - 2G2A					
		CASCO BAY STEEL STRUCTURES, INC. 1 WALLACE AVE. PHONE (207) 780-6722 SOUTH PORTLAND, ME 04106 FAX. (207) 780-6726			
STRUCTURE: VT RTE 15A OVER LAMOILLE RIVER		DRAWN: JTB		DATE: 08/02	
ROUTE No. VT 15A, MAJOR COLLECTOR		CHKD: WJL		DATE: 08/30	
BRIDGE No. 1		JOB NO. 713		DWG NO. 2	
COUNTY OF LAMOILLE		CUSTOMER: STATE OF VERMONT R.O.T.		REV. 2	
LOCATION: MORRISTOWN, VT				REV. 2	
PROJ NO. BRS-0240(3)S & STP HES 030-2(28)				REV. 2	