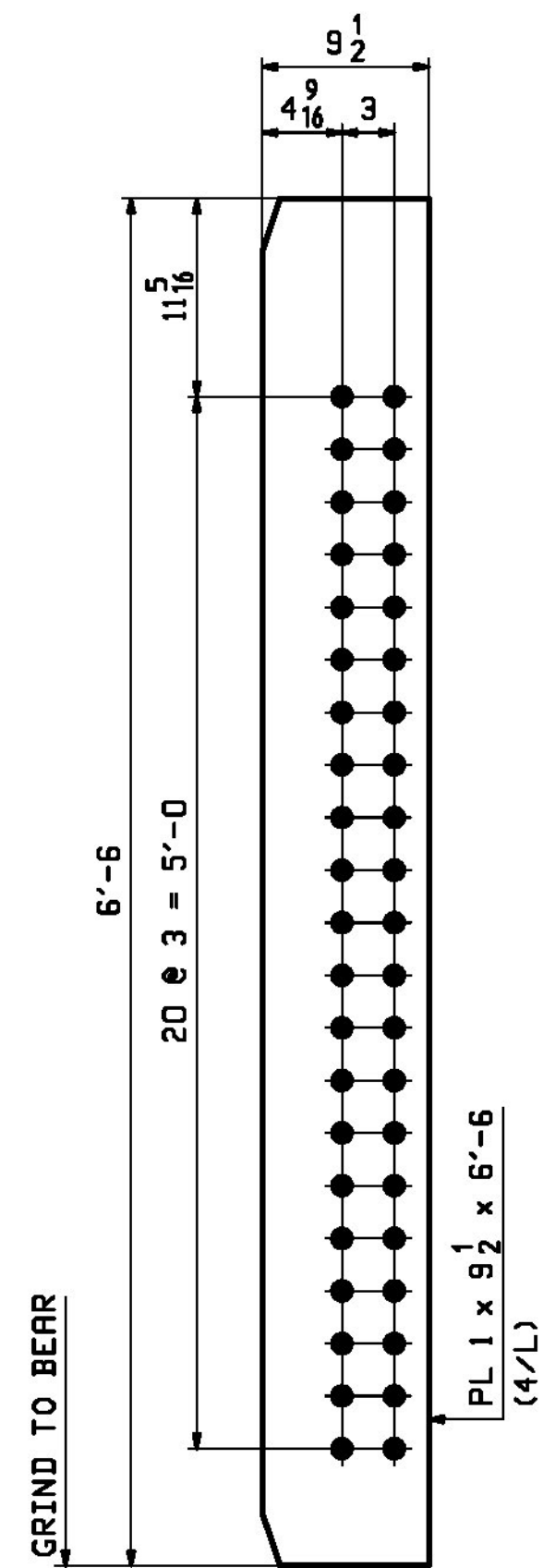
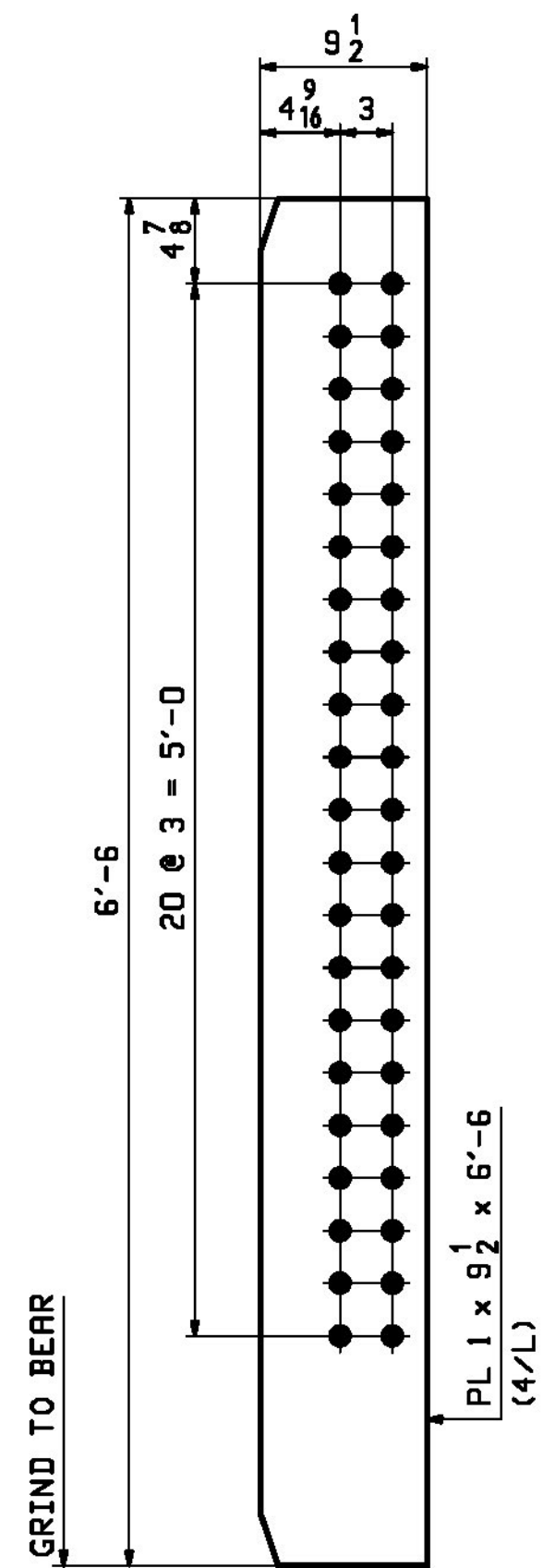


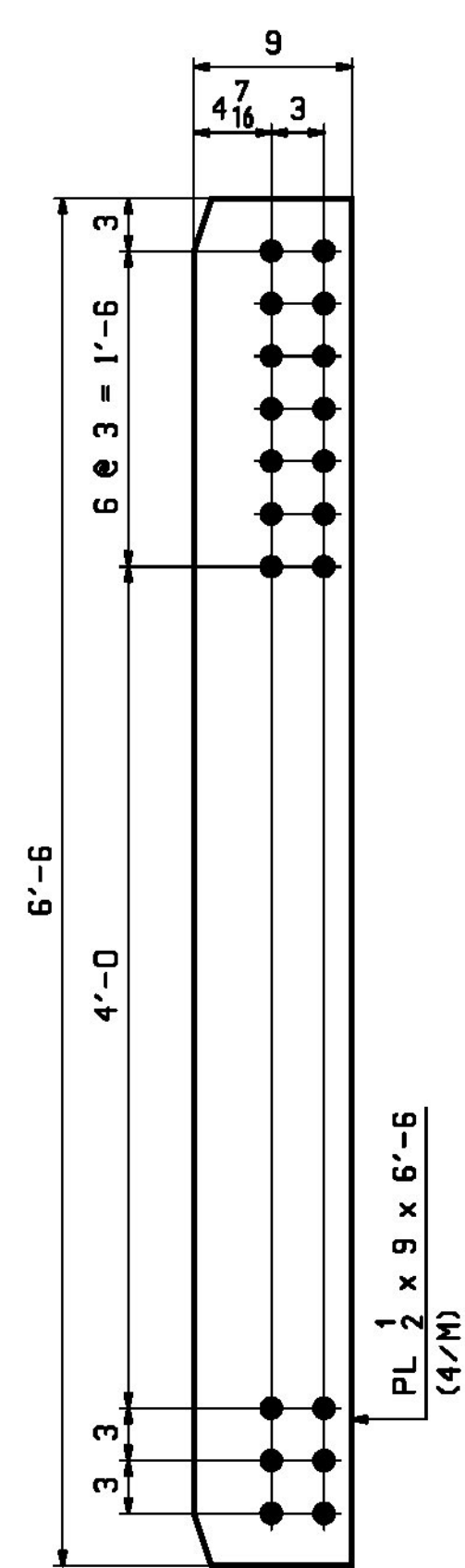
**4 ~ x2a**  
PIER BRG STIFFENER  
FASICA SIDE / BLANK SIDE



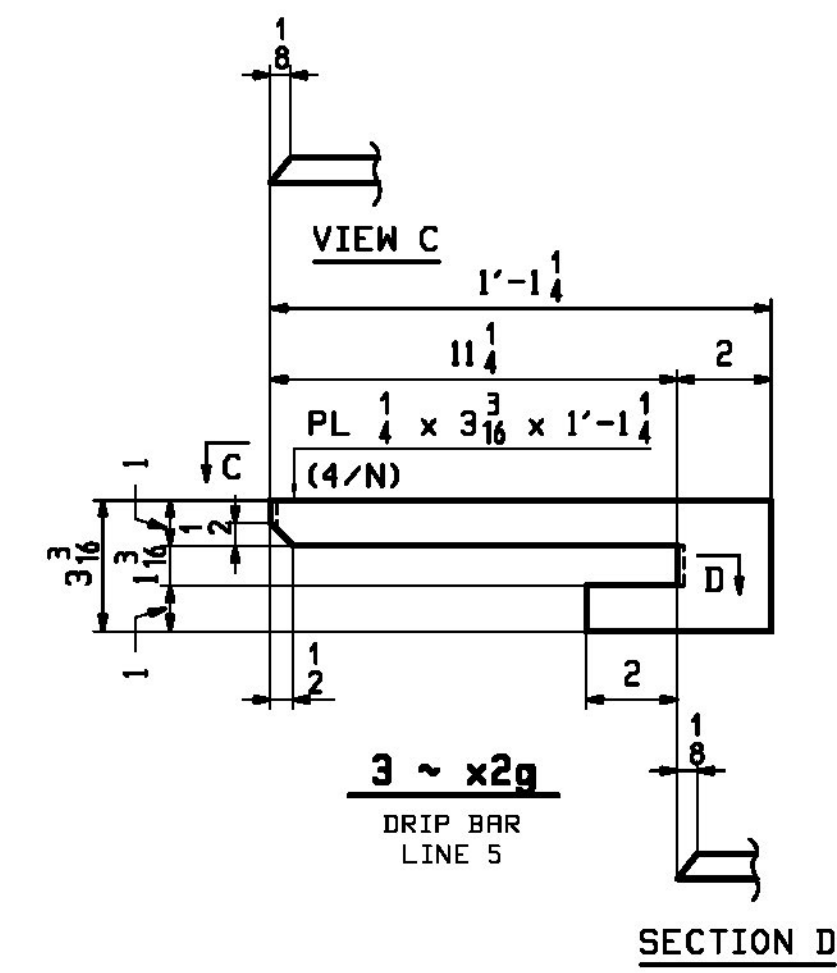
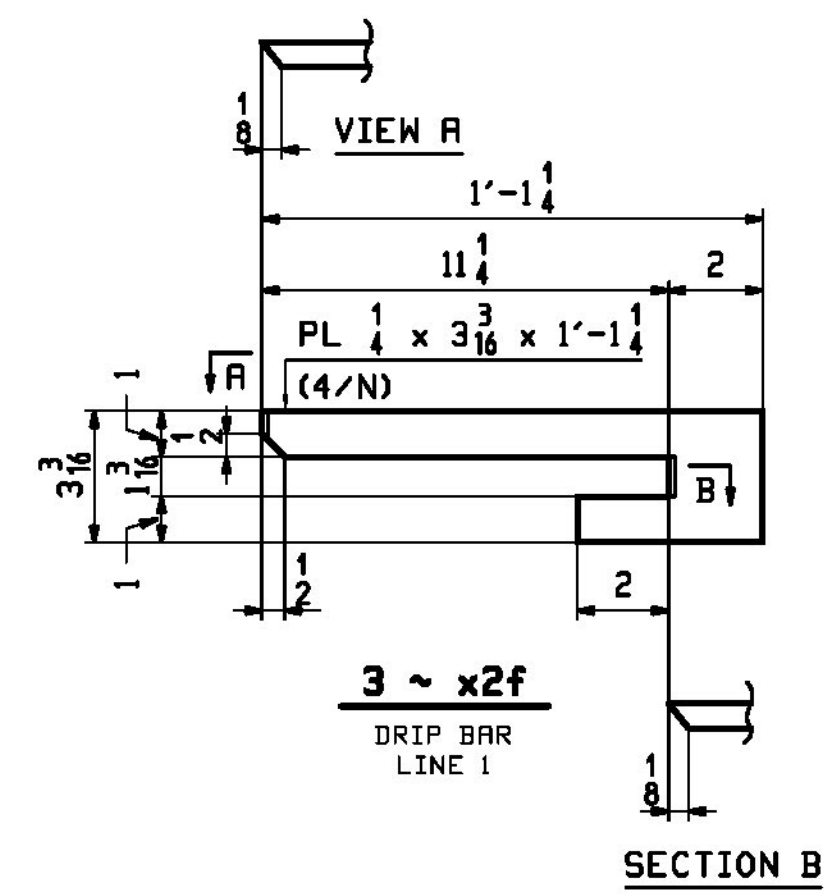
**8 ~ x2b**  
BRG STIFFENER  
PIER BRG STIFF (HIGH)



**8 ~ x2c**  
BRG STIFFENER  
PIER BRG STIFF (LOW)



**112 ~ x2d**  
INT. CF CONN



NOTE:  
FOR GENERAL NOTES SEE DRAWING GNI.

REV.	DATE	REMARKS	DWN	CHK	APVL	SHOP
0						
MATERIAL:		SURFACE PREP. & PAINT:		HOLES:		SHOP BOLTS:
M270-50W		SEE DWG GNI		1 5/16" Ø		NONE
DESCRIPTION: GIRDER STANDARD DETAILS						
STRUCTURE: VT RTE 15A OVER LAMOILLE RIVER ROUTE No. VT 15A, MAJOR COLLECTOR BRIDGE No. 1 COUNTY OF LAMOILLE			DRAWN:	DATE:		
			JTB	08/01		
			CHKD:	DATE:		
			WJL	08/30		
LOCATION: MORRISTOWN, VT			JOB NO.	DWG NO.		
PROJ NO. BRS-0240(3)S & STP HES 030-2(28)			713	X2		
CUSTOMER: STATE OF VERMONT R.O.T.				REV. Δ		

Vermont Agency of Transportation

**RECEIVED**

10-6-17\_713\_Shop\_Drawings\_REV2.pdf

CK'D BY CLB OK'D BY CWC

October 5, 2017

RESUBMIT NO Approved  
BY C. CARLSON DATE 10/05/17