

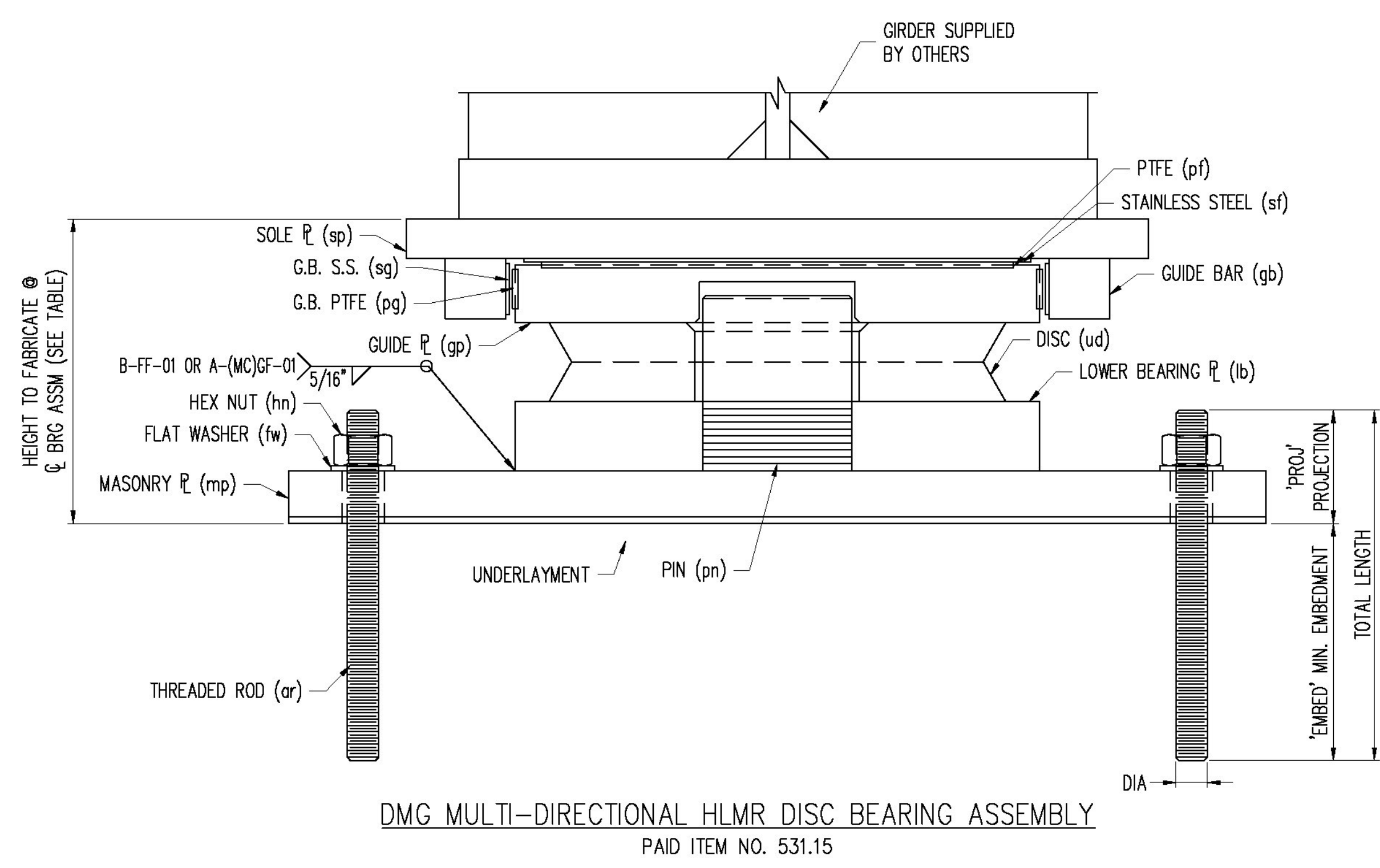
MK	QTY	DESCRIPTION
11A	3	DMG-410
11sp1	3	SOLE PLATE
11sf1	3	STAINLESS STEEL
11pf1	3	PTFE DISC
11gp1	3	GUIDE PLATE
11b1	3	LOWER BEARING PLATE
11ud1	3	URETHANE DISC
11pn1	3	SHEAR PIN
11gb1	6	GUIDE BAR
11sg1	6	G.B. STAINLESS STEEL
11pg1	6	G.B. LOW-FRICTION MAT'L
11mp1	3	MASONRY PLATE
11FA	3	UNDERLAYMENT (*SL)
11HA	12	THREADED ROD (*SL)
11HB	12	HEAVY HEX NUT (*SL)
11HC	12	FLAT WASHER (*SL)
MK	QTY	DESCRIPTION
11B	2	DMGT-375
11sp2	2	SOLE PLATE
11sf2	2	STAINLESS STEEL
11pf2	2	PTFE DISC
11gp2	2	GUIDE PLATE
11b2	2	LOWER BEARING PLATE
11ud2	2	URETHANE DISC
11pn2	2	SHEAR PIN
11gb2	4	GUIDE BAR
11sg2	4	G.B. STAINLESS STEEL
11pg2	4	G.B. LOW-FRICTION MAT'L
11mp2	2	MASONRY PLATE
11FB	2	UNDERLAYMENT (*SL)
11HA	8	THREADED ROD (*SL)
11HB	8	HEAVY HEX NUT (*SL)
11HC	8	FLAT WASHER (*SL)

HLMR BEARING ASSEMBLY LOCATION & LRFD DESIGN INFORMATION (DMG)															
MK	QTY	STRUCTURE	BEARING TYPE	LOCATION	MAX VERT. SERVICE STRENGTH	MAX VERT. STRENGTH	MAX HORIZ. SERVICE STRENGTH	MAX HORIZ. STRENGTH	LONG MVMNT	TRANS MVMNT	ROTATION (RAD)	HEIGHT TO FABRICATE	HEIGHT IN PLANS	DIFFERENCE IN PLANS	UNDERLAYMENT IN HEIGHT (Y/N)
11A	3	Bridge No. 1	DMG-410	Pier 2: 2 thru 4	410.0 kips	600.0 kips	41.0 kips	62.0 kips	2.250	0	0.02	6.167	6.000	+0.167	YES
11B	2	Bridge No. 1	DMGT-375	Pier 1: 1 and 5	375.0 kips	540.0 kips	98.0 kips	123.0 kips	0	1.000	0.02	6.857	6.000	+0.857	YES

ANCHOR ROD SCHEDULE (DMG)										
ASSEM MK	FOR BRG	PIECE MK	QTY	DIA	LENGTH	PROJ	EMBED	LOCATION	MATERIAL	COATING
11HA	11A	11ar1	12	1.500	22.000	4.000	18.000	Pier 2: 2 thru 4	F1554 GR. 55	A153-HDG
11HA	11B	11ar1	8	1.500	22.000	4.000	18.000	Pier 1: 1 and 5	F1554 GR. 55	A153-HDG

NUT SCHEDULE (DMG)						
ASSEM MK	FOR BRG	PIECE MK	QTY	DIA	MATERIAL	COATING
11HB	11A	11hn1	12	1.500	A563-DH OR A194-2H HEAVY HEX	A153-HDG
11HB	11B	11hn1	8	1.500	A563-DH OR A194-2H HEAVY HEX	A153-HDG

WASHER SCHEDULE (DMG)						
ASSEM MK	FOR BRG	PIECE MK	QTY	DIA	MATERIAL	COATING
11HC	11A	11fw1	12	1.500	F436	A153-HDG
11HC	11B	11fw1	8	1.500	F436	A153-HDG



Vermont Agency of Transportation
RECEIVED
 CK'D BY CLC OK'D BY CWC
December 1, 2017
 RESUBMIT NO Approved
 BY C. CARLSON DATE 12/08/17

* SL = SHIPPED LOOSE
 SEE SHT. 12, 13, 14, & 15 FOR SUB-ASSEMBLY DETAILS.
 SEE SHT. G01 FOR GENERAL NOTES & G02 FOR COATING NOTES & LIMITS.
 ALL DIMENSIONS IN INCHES UNLESS OTHERWISE NOTED

D.S. BROWN
 A GIBRALTAR INDUSTRIES COMPANY
 THE D.S. BROWN COMPANY
 300 E. CHERRY STREET
 NORTH BALTIMORE, OHIO 45872
 419.257.3561
 FAX: 419.257.0332
 WWW.DSBROWN.COM

REV.	DESCRIPTION	DATE	DET.	CKD.
1	REVISED ANCHOR HARDWARE DIAMETER FROM 1.25" TO 1.5"	12/1/17	DSB	KTG
LOCATION — VT RTE 15A MAJOR COLLECTOR		ITEM	QUANTITY	
BRIDGE — NO. 1		53146-1114-C	2 OF 2	
PROJECT — BRS 0240(3)S & STP HES 030-2(28)		53146-1114-D	3 OF 3	
PROJECT NAME — MORRISTOWN		—	—	
P.O. NO. — K1619		—	—	
DESIGNER — T.Y. LIN INTERNATIONAL		—	—	
CUSTOMER — WINTERSET, INC.		—	—	
DESCRIPTION:	SCALE:	DRAWN BY:	CHECKED BY:	DATE:
DMG UNI-DIRECTIONAL HLMR ASSEMBLY & DESIGN INFORMATION	N.T.S.	DA	KTG	11/17
LAMOILLE CO., VT	PROJECT NUMBER:	PRODUCT CODE:	RELEASE:	SHEET:
	53146	1114	1	11