

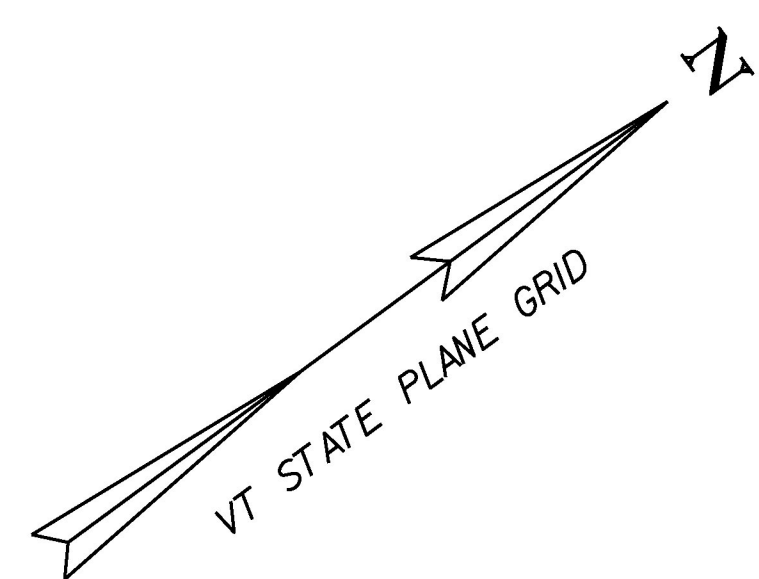
REMOVE FENCE
STA. 115+22.00 - STA. 116+00.00 RT

BOX BEAM GUARDRAIL
STA. 112+50.00 - STA. 115+01.35 LT
STA. 112+62.51 - STA. 113+40.23 RT
STA. 113+90.76 - STA. 116+00.00 RT
STA. 115+65.47 - STA. 116+00.00 LT

MANUFACTURED TERMINAL SECTION, TANGENT
STA. 112+49.39 - STA. 112+62.51 RT
STA. 113+77.10 - STA. 113+90.76 RT
STA. 115+01.34 - STA. 115+14.83 LT

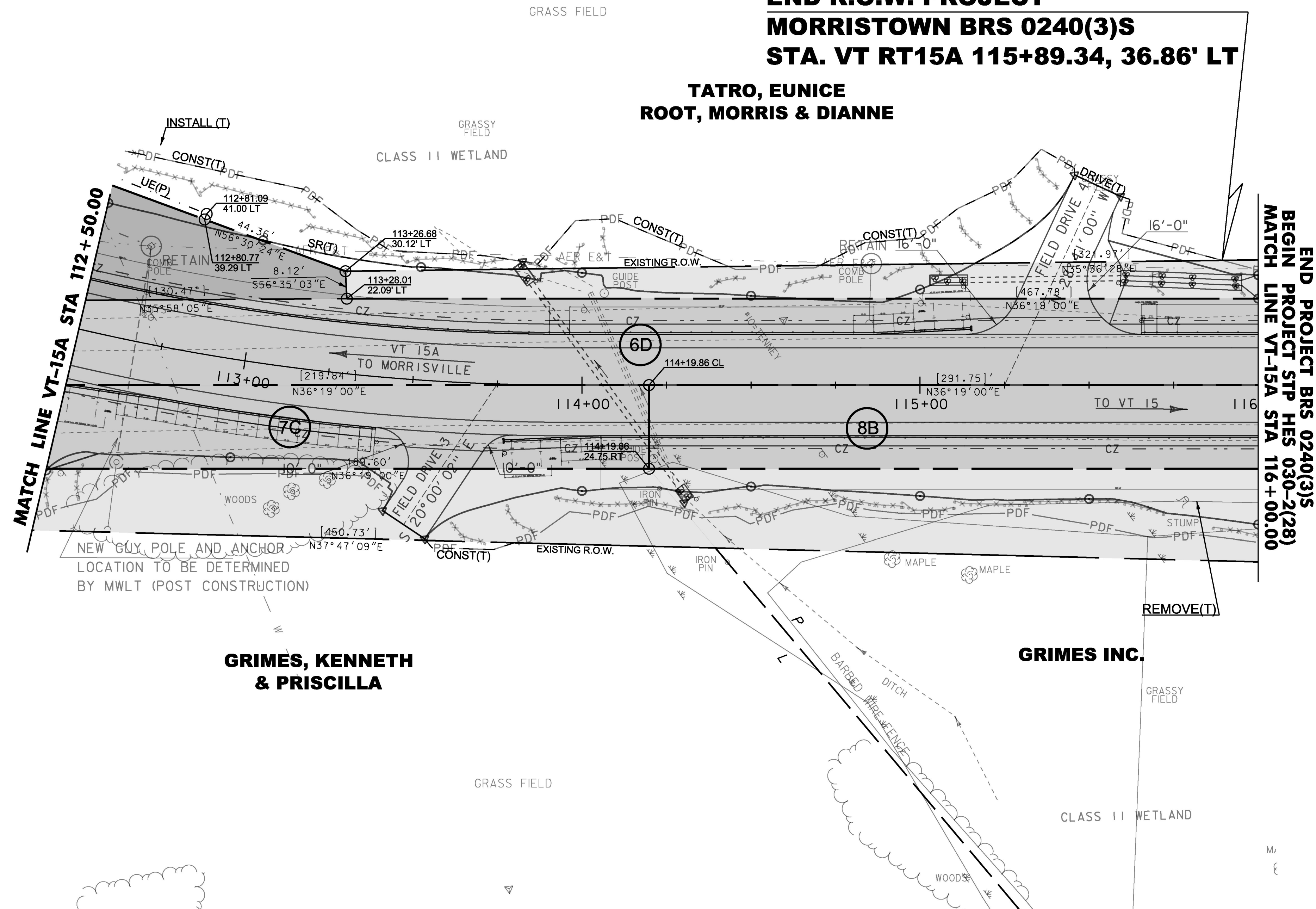
CONSTRUCT APRON (PAVED)
FOR ADDITIONAL DETAILS SEE CROSS SECTIONS
STA. 113+75.00 RT (23'-0" WIDE) (5'-0" LENGTH)
STA. 115+25.00 LT (28'-5" WIDE) (5'-0" LENGTH)

CONSTRUCT DRIVE (GRAVEL)
FOR ADDITIONAL DETAILS SEE CROSS SECTIONS
STA. 113+75.00 RT (15'-0" WIDE)
STA. 115+25.00 LT (15'-0" WIDE)



**END R.O.W. PROJECT
MORRISTOWN BRS 0240(3)S
STA. VT RT15A 115+89.34, 36.86' LT**

**TATRO, EUNICE
ROOT, MORRIS & DIANNE**



**END PROJECT BRS 0240(3)S
BEGIN PROJECT STP HES 030-2(28)
MATCH LINE VT-15A STA 116+00.00**

MATCH LINE VT-15A STA 112+50.00

**GRIMES, KENNETH
& PRISCILLA**

GRIMES INC.

LINES SHOWN ON THIS PLAN AS EXISTING PROPERTY LINES P/L ARE BELIEVED TO BE ACCURATE BUT SHOULD NOT BE RELIED UPON FOR PURPOSES UNRELATED TO THE STATE OF VERMONT'S ACQUISITION OF LAND AND RIGHTS FOR THIS PROJECT.

**FOR R.O.W.
USE ONLY**

SUBJECT TO STORMWATER PERMIT #7254-INDS.

SCALE 1" = 20'-0"
20 0 20

PROJECT NAME: MORRISTOWN	
PROJECT NUMBER: BRS 0240(3)S	
FILE NAME: r78f329lay3.dgn	PLOT DATE: 12-APR-2017
PROJECT LEADER: C. CARLSON	DRAWN BY: T. POLK
DESIGNED BY: J. GRIFFIN	CHECKED BY: R. CLOUTIER
R.O.W. LAYOUT SHEET 3 OF 5	SHEET 173 OF 175