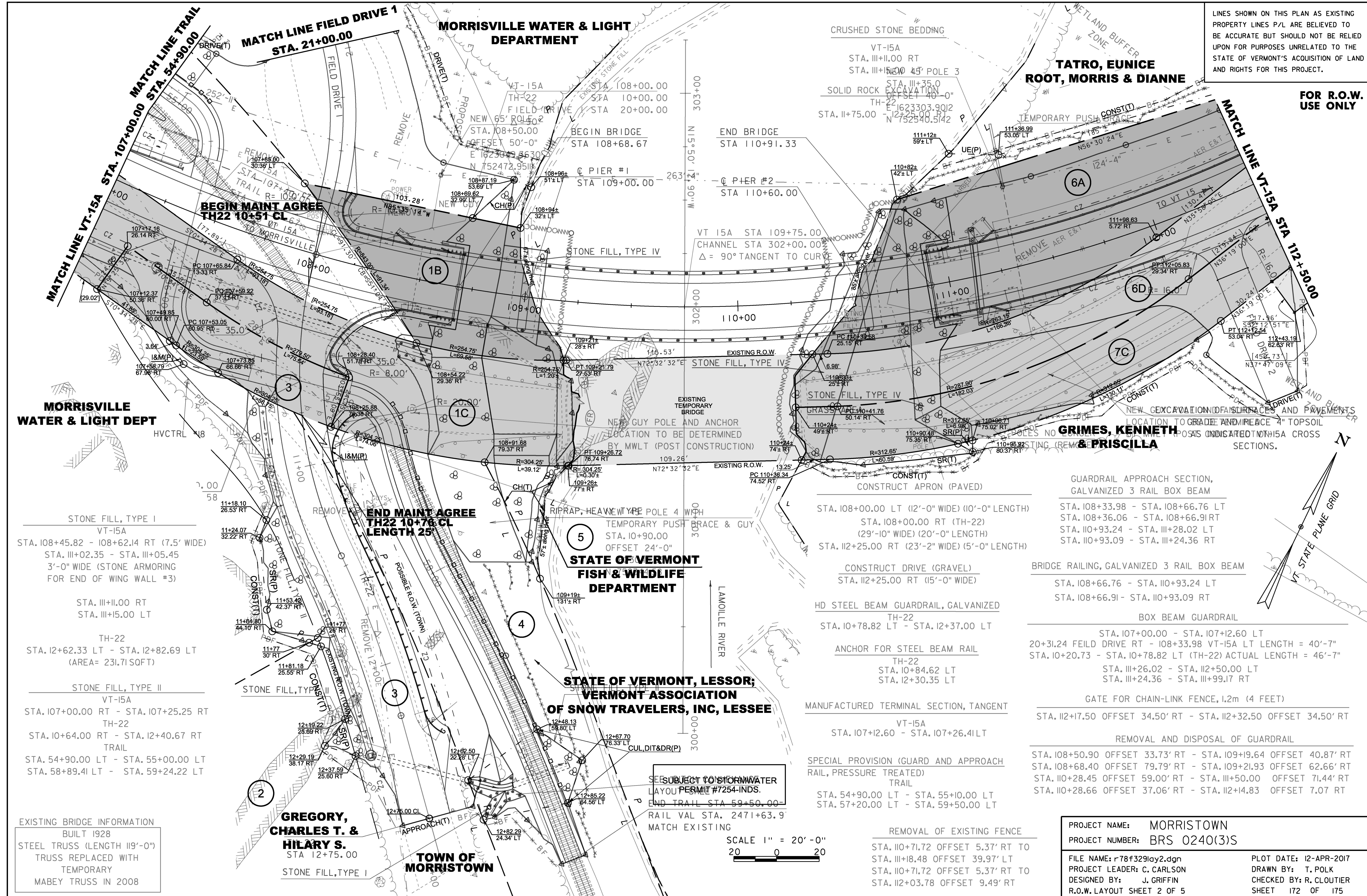


LINES SHOWN ON THIS PLAN AS EXISTING PROPERTY LINES P/L ARE BELIEVED TO BE ACCURATE BUT SHOULD NOT BE RELIED UPON FOR PURPOSES UNRELATED TO THE STATE OF VERMONT'S ACQUISITION OF LAND AND RIGHTS FOR THIS PROJECT.

FOR R.O.W. USE ONLY



STONE FILL, TYPE I
VT-15A
STA. 108+45.82 - 108+62.14 RT (7.5' WIDE)
STA. 111+02.35 - STA. 111+05.45
3'-0" WIDE (STONE ARMORING FOR END OF WING WALL #3)

STA. 111+00.00 RT
STA. 111+05.00 LT

TH-22
STA. 12+62.33 LT - STA. 12+82.69 LT
(AREA = 231.71 SQFT)

STONE FILL, TYPE II
VT-15A
STA. 107+00.00 RT - STA. 107+25.25 RT
TH-22
STA. 10+64.00 RT - STA. 12+40.67 RT
TRAIL
STA. 54+90.00 LT - STA. 55+00.00 LT
STA. 58+89.41 LT - STA. 59+24.22 LT

EXISTING BRIDGE INFORMATION
BUILT 1928
STEEL TRUSS (LENGTH 119'-0")
TRUSS REPLACED WITH TEMPORARY MABEY TRUSS IN 2008

END MAINT AGREE
TH22 10+76 CL
LENGTH 25'

END MAINT AGREE
TH22 10+51 CL

STATE OF VERMONT FISH & WILDLIFE DEPARTMENT

STATE OF VERMONT, LESSOR; VERMONT ASSOCIATION OF SNOW TRAVELERS, INC, LESSEE

GREGORY, CHARLES T. & HILARY S.
STA 12+75.00

TOWN OF MORRISTOWN

STATE OF VERMONT FISH & WILDLIFE DEPARTMENT

STATE OF VERMONT, LESSOR; VERMONT ASSOCIATION OF SNOW TRAVELERS, INC, LESSEE

CONSTRUCT APRON (PAVED)
STA. 108+00.00 LT (12'-0" WIDE) (10'-0" LENGTH)
STA. 108+00.00 RT (TH-22) (29'-10" WIDE) (20'-0" LENGTH)
STA. 112+25.00 RT (23'-2" WIDE) (5'-0" LENGTH)

CONSTRUCT DRIVE (GRAVEL)
STA. 112+25.00 RT (15'-0" WIDE)

HD STEEL BEAM GUARDRAIL, GALVANIZED
TH-22
STA. 10+78.82 LT - STA. 12+37.00 LT

ANCHOR FOR STEEL BEAM RAIL
TH-22
STA. 10+84.62 LT
STA. 12+30.35 LT

MANUFACTURED TERMINAL SECTION, TANGENT
VT-15A
STA. 107+12.60 - STA. 107+26.41 LT

SPECIAL PROVISION (GUARD AND APPROACH RAIL, PRESSURE TREATED) TRAIL
STA. 54+90.00 LT - STA. 55+10.00 LT
STA. 57+20.00 LT - STA. 59+50.00 LT

REMOVAL OF EXISTING FENCE
STA. 110+71.72 OFFSET 5.37' RT TO STA. 111+18.48 OFFSET 39.97' LT
STA. 110+71.72 OFFSET 5.37' RT TO STA. 112+03.78 OFFSET 9.49' RT

GUARDRAIL APPROACH SECTION, GALVANIZED 3 RAIL BOX BEAM
STA. 108+33.98 - STA. 108+66.76 LT
STA. 108+36.06 - STA. 108+66.91 RT
STA. 110+93.24 - STA. 111+28.02 LT
STA. 110+93.09 - STA. 111+24.36 RT

BRIDGE RAILING, GALVANIZED 3 RAIL BOX BEAM
STA. 108+66.76 - STA. 110+93.24 LT
STA. 108+66.91 - STA. 110+93.09 RT

BOX BEAM GUARDRAIL
STA. 107+00.00 - STA. 107+12.60 LT
20+31.24 FIELD DRIVE RT - 108+33.98 VT-15A LT LENGTH = 40'-7"
STA. 10+20.73 - STA. 10+78.82 LT (TH-22) ACTUAL LENGTH = 46'-7"
STA. 111+26.02 - STA. 112+50.00 LT
STA. 111+24.36 - STA. 111+99.17 RT

GATE FOR CHAIN-LINK FENCE, 1.2m (4 FEET)
STA. 112+17.50 OFFSET 34.50' RT - STA. 112+32.50 OFFSET 34.50' RT

REMOVAL AND DISPOSAL OF GUARDRAIL
STA. 108+50.90 OFFSET 33.73' RT - STA. 109+19.64 OFFSET 40.87' RT
STA. 108+68.40 OFFSET 79.79' RT - STA. 109+21.93 OFFSET 62.66' RT
STA. 110+28.45 OFFSET 59.00' RT - STA. 111+50.00 OFFSET 71.44' RT
STA. 110+28.66 OFFSET 37.06' RT - STA. 112+14.83 OFFSET 7.07' RT

SCALE 1" = 20'-0"
20 0 20

PROJECT NAME: MORRISTOWN
PROJECT NUMBER: BRS 0240(3)S
FILE NAME: r78f329lay2.dgn
PROJECT LEADER: C. CARLSON
DESIGNED BY: J. GRIFFIN
R.O.W. LAYOUT SHEET 2 OF 5
PLOT DATE: 12-APR-2017
DRAWN BY: T. POLK
CHECKED BY: R. CLOUTIER
SHEET 172 OF 175