

BOX BEAM GUARDRAIL
STA. 104+28.32 - STA. 107+00 LT

COLD PLANNING, BITUMINOUS PAVEMENT
STA. 102+00.00 - STA. 104+25.00

STONE FILL, TYPE II
VT-15A
STA. 102+75.30 RT - STA. 107+00.00 RT
TRAIL
STA. 53+25.00 LT - STA. 54+90.00 LT

SPECIAL PROVISION (GUARD AND APPROACH
RAIL, PRESSURE TREATED)
TRAIL
STA. 53+25.00 LT - STA. 54+90.00 LT

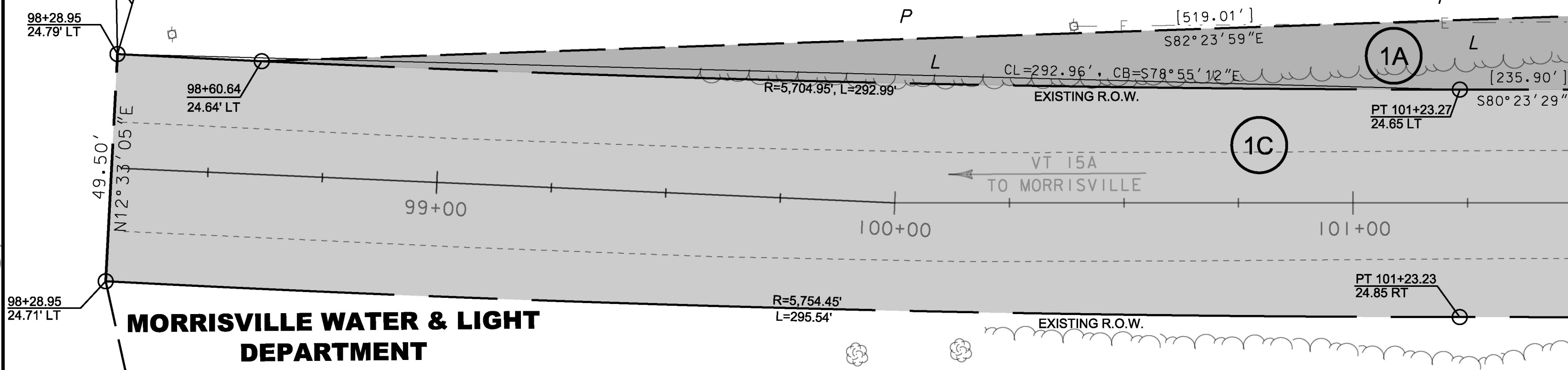
N

VT STATE PLANE GRID

INSET - FROM STA. 101+50

**BEGIN R.O.W. PROJECT
MORRISTOWN BRS 0240(3)
STA. VT RT15A 98+28.95, 24.79' LT**

**STATE OF VERMONT, LESSOR
VERMONT ASSOCIATION
OF SNOW TRAVELERS, INC, LESSEE**



END
FIELD DRIVE I
STA 23+00.00

MATCH LINE STA. 101+50

**MORRISVILLE WATER & LIGHT
DEPARTMENT**

BEGIN TRAIL STA 52+50.00 =
N 752603.6 RAIL VAL STA. 2478+12.00
E 1622607.15
103+76.29 MATCH EXISTING

NEW 50' POLE I
STA. 105+85.00
OFFSET 32'-0"
E 1622796.5871
N 752481.0447

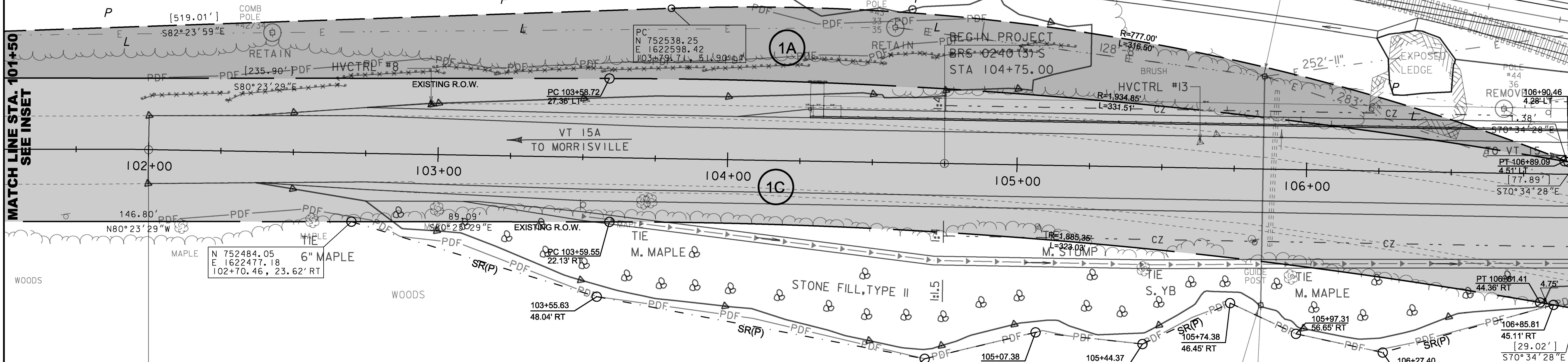
**STATE OF VERMONT, LESSOR
VERMONT ASSOCIATION
OF SNOW TRAVELERS, INC, LESSEE**

BEGIN PROJECT
BRS-0240(3)-S
STA 104+75.00

MATCH LINE STA. 101+50
SEE INSET

MATCH LINE TRAIL
STA. 54+90.00

MATCH LINE FIELD DRIVE I
STA. 21+00.00



BEGIN APPROACH
BRS 0240(3) S
STA 102+00.00
MATCH EXISTING

LINES SHOWN ON THIS PLAN AS EXISTING
PROPERTY LINES P/L ARE BELIEVED TO
BE ACCURATE BUT SHOULD NOT BE RELIED
UPON FOR PURPOSES UNRELATED TO THE
STATE OF VERMONT'S ACQUISITION OF LAND
AND RIGHTS FOR THIS PROJECT.

SUBJECT TO STORMWATER
PERMIT #7254-INDS.

SCALE 1" = 20' - 0"
20 0 20

**MORRISVILLE WATER & LIGHT
DEPARTMENT**

PROJECT NAME: MORRISTOWN
PROJECT NUMBER: BRS 0240(3)S

FILE NAME: r78f329lay1.dgn
PROJECT LEADER: C. CARLSON
DESIGNED BY: J. GRIFFIN
R.O.W. LAYOUT 1 OF 5

PLOT DATE: 12-APR-2017
DRAWN BY: T. POLK
CHECKED BY: R. CLOUTIER
SHEET 171 OF 175

**FOR R.O.W.
USE ONLY**