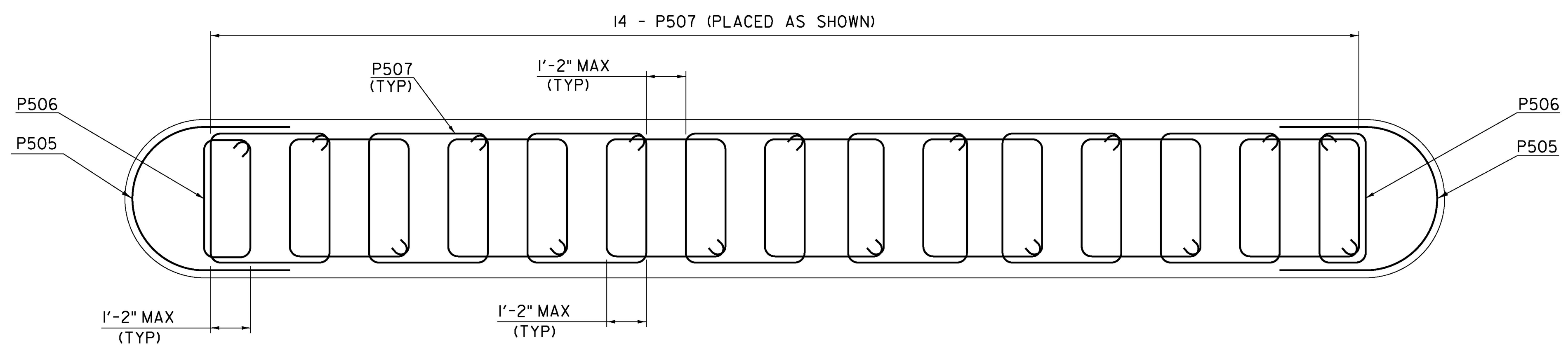
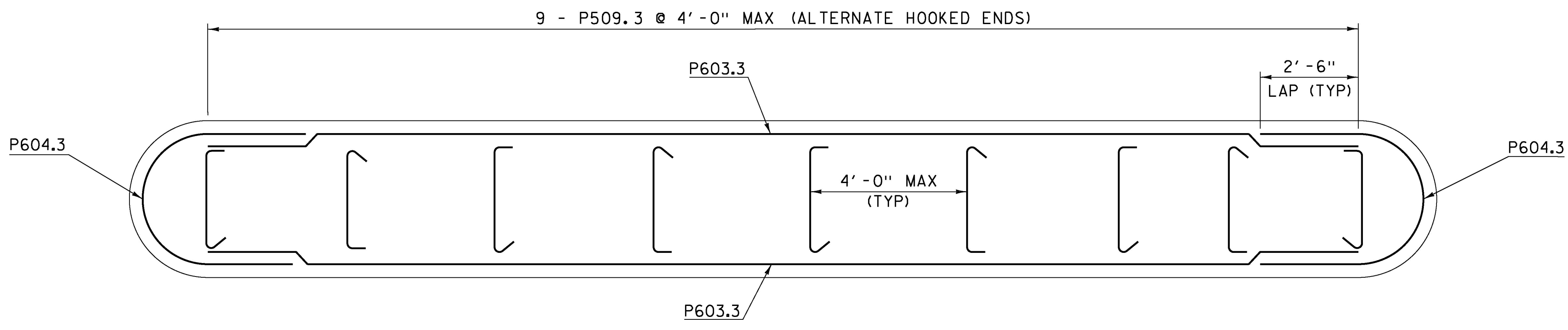


REBAR SET #1
SCALE 1/2" = 1'-0"



REBAR SET #2
SCALE 1/2" = 1'-0"

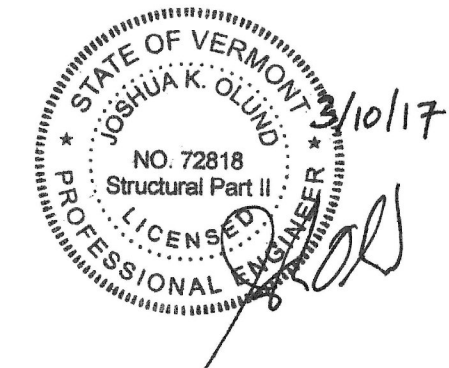


REBAR SET #3
SCALE 1/2" = 1'-0"

NOTE:

NOTE:
VERTICAL BARS NOT SHOWN FOR CLARITY.
VERTICAL BARS SHALL BE PLACED WITHIN TRANSVERSE REBAR SETS.

NOTE:
NF = NEAR FACE
FF = FAR FACE
EF = EACH FACE
▲ = CUT TO FIT IN FIELD
4" CLEAR, UNLESS OTHERWISE SPECIFIED ON THE PLANS.
2'-1" BAR LAP UNLESS OTHERWISE SPECIFIED ON THE PLANS.



TYLIN INTERNATIONAL

PROJECT NAME:	MORRISTOWN
PROJECT NUMBER:	BRS 0240(3)S/STP HES 030-2(28)
FILE NAME:	s78f329sub.dgn
PROJECT LEADER:	C. CARLSON
DESIGNED BY:	D. MYERS
PIER REBAR SET SHEET	
PLOT DATE:	12-APR-2017
DRAWN BY:	G. ROKES
CHECKED BY:	J. OLUND
SHEET	95 OF 175