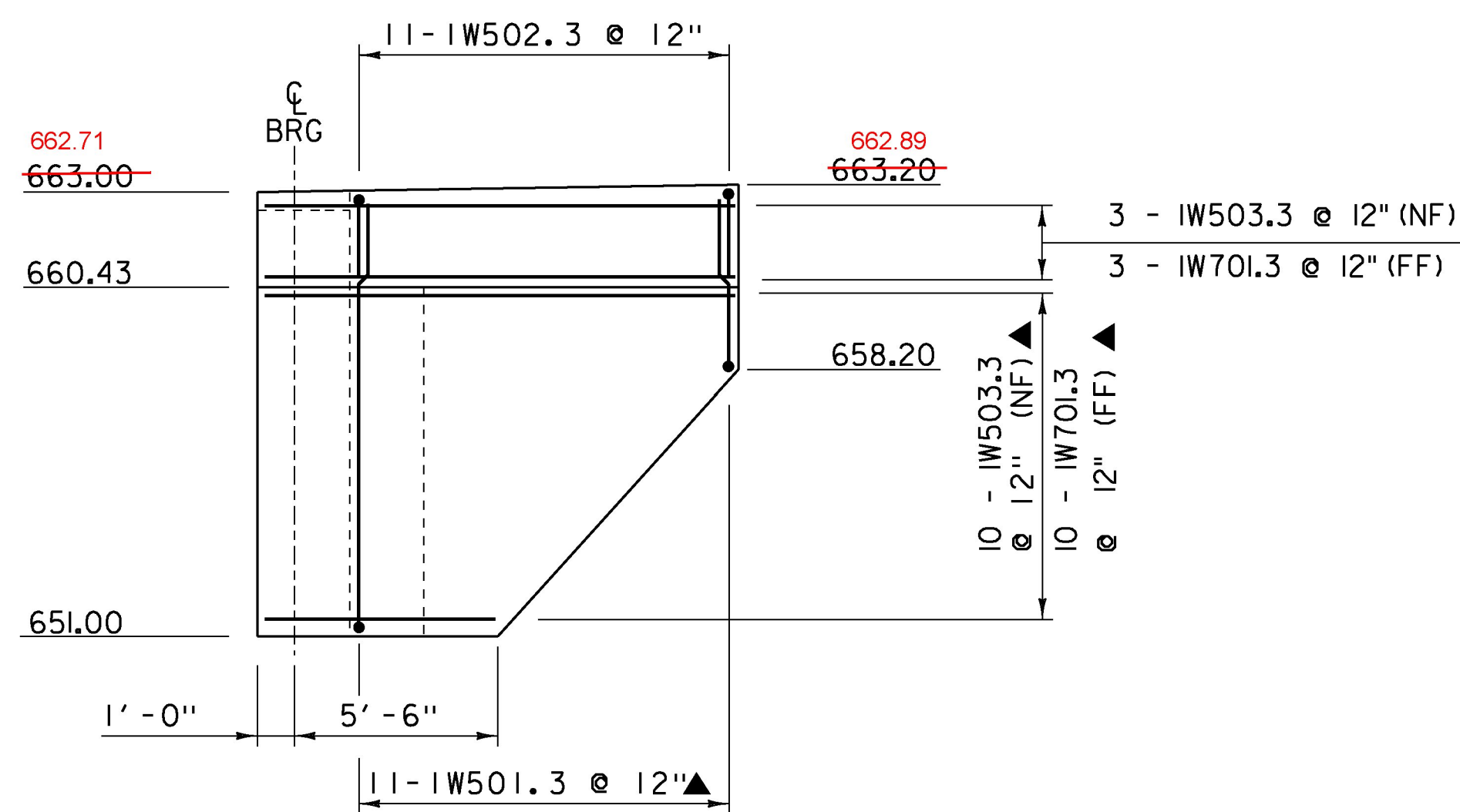


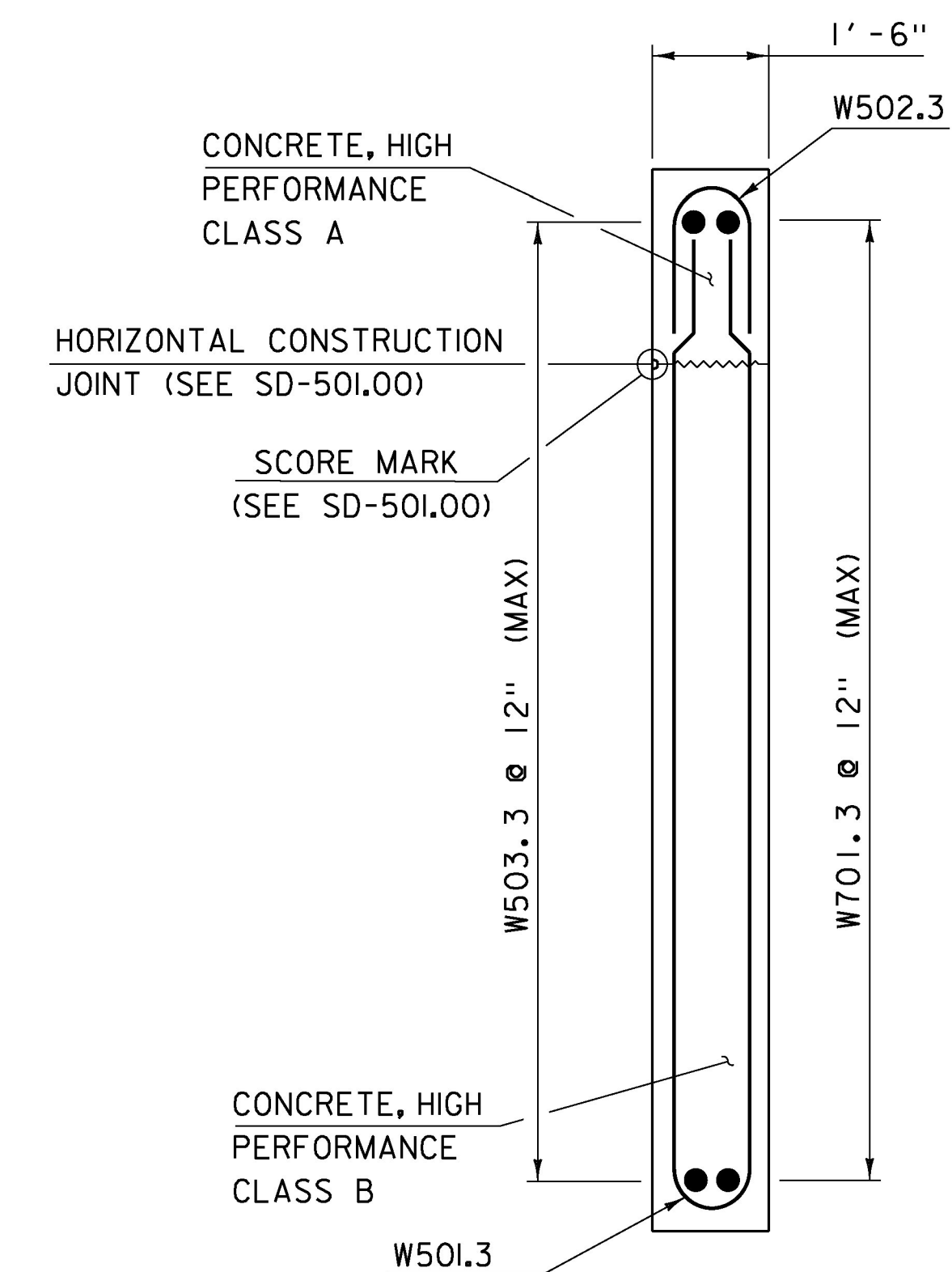
WINGWALL #2 ELEVATION

SCALE 1/4" = 1'-0"



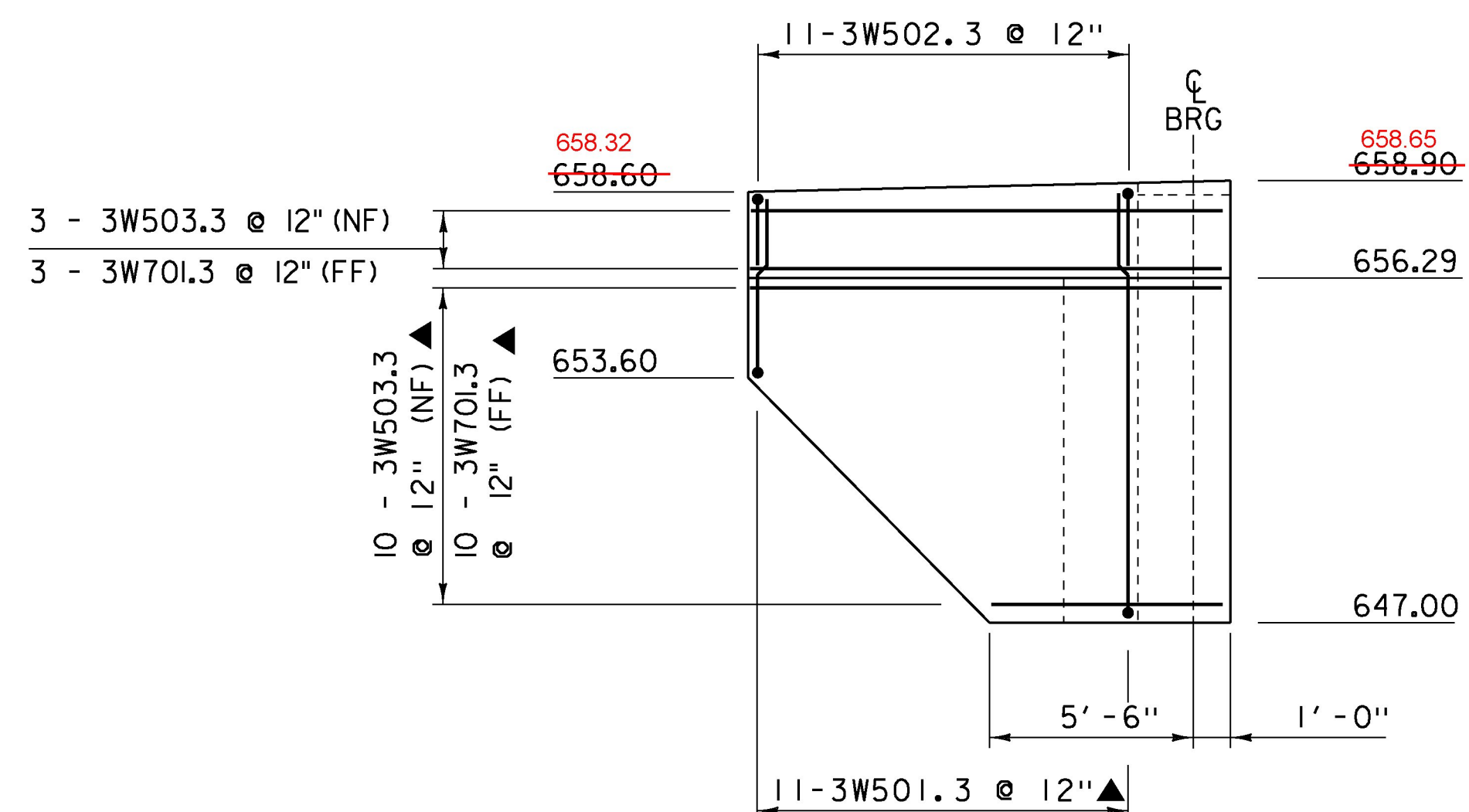
WINGWALL #1 ELEVATION

SCALE 1/4" = 1'-0"



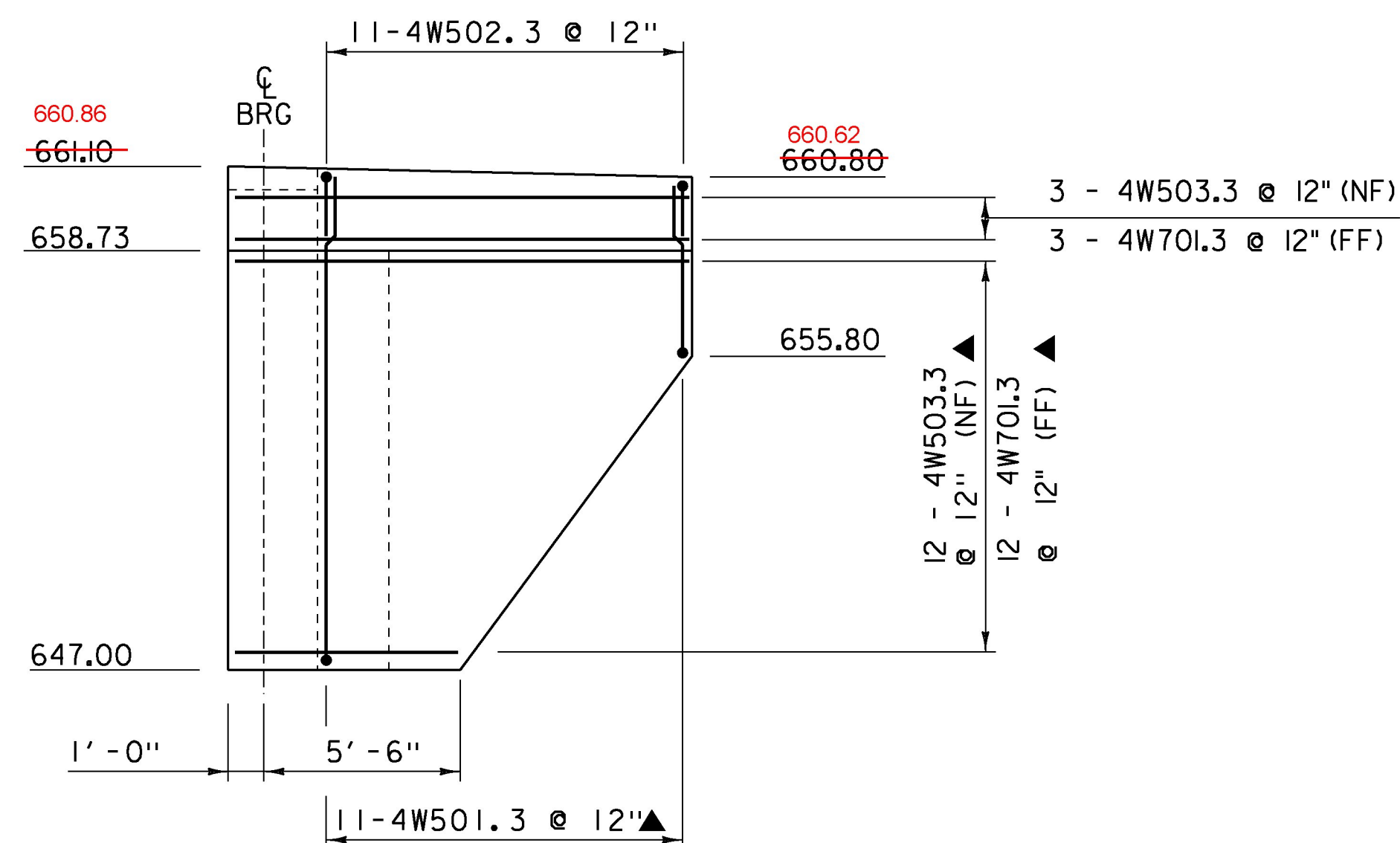
WINGWALL TYPICAL

SCALE 1/2" = 1'-0"



WINGWALL #3 ELEVATION

SCALE 1/4" = 1'-0"

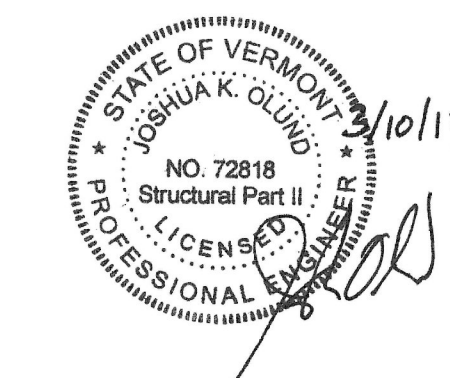


WINGWALL #4 ELEVATION

SCALE 1/4" = 1'-0"

NOTE:

- NF = NEAR FACE
- FF = FAR FACE
- EF = EACH FACE
- ▲ = CUT TO FIT IN FIELD
- 3" CLEAR, UNLESS OTHERWISE SPECIFIED ON THE PLANS.
- 2'-2" BAR LAP UNLESS OTHERWISE SPECIFIED ON THE PLANS.



TYLIN INTERNATIONAL

| | |
|--------------------------------|--------------------------------|
| PROJECT NAME: | MORRISTOWN |
| PROJECT NUMBER: | BRS 0240(3)S/STP HES 030-2(28) |
| FILE NAME: | s78f329sub.dgn |
| PROJECT LEADER: | C. CARLSON |
| DESIGNED BY: | J. OLUND |
| WINGWALL ELEVATION AND TYPICAL | |
| PLOT DATE: | 12-APR-2017 |
| DRAWN BY: | G. ROKES |
| CHECKED BY: | T. POULIN |
| SHEET | 90 OF 175 |