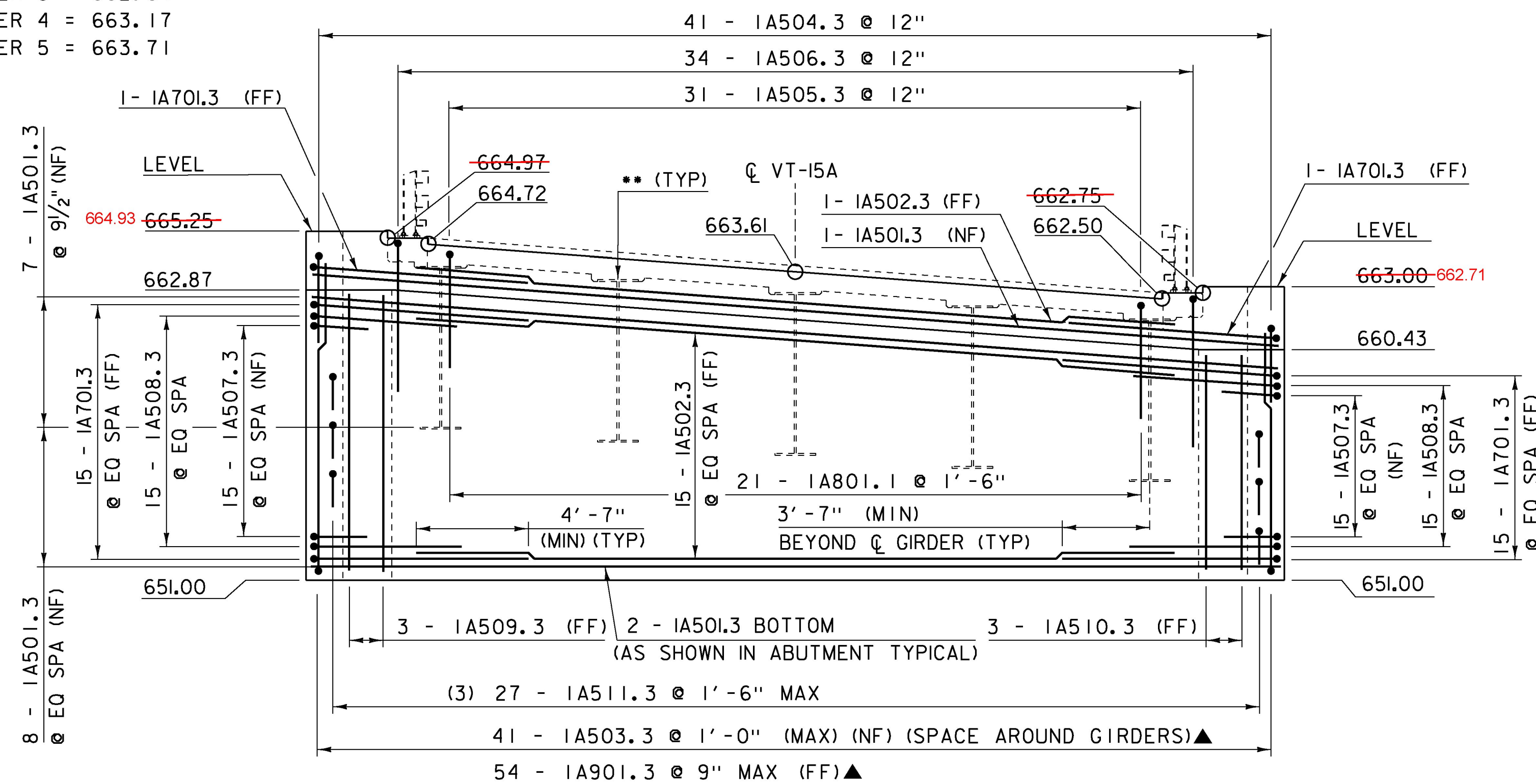


ABUTMENT #1 PLAN

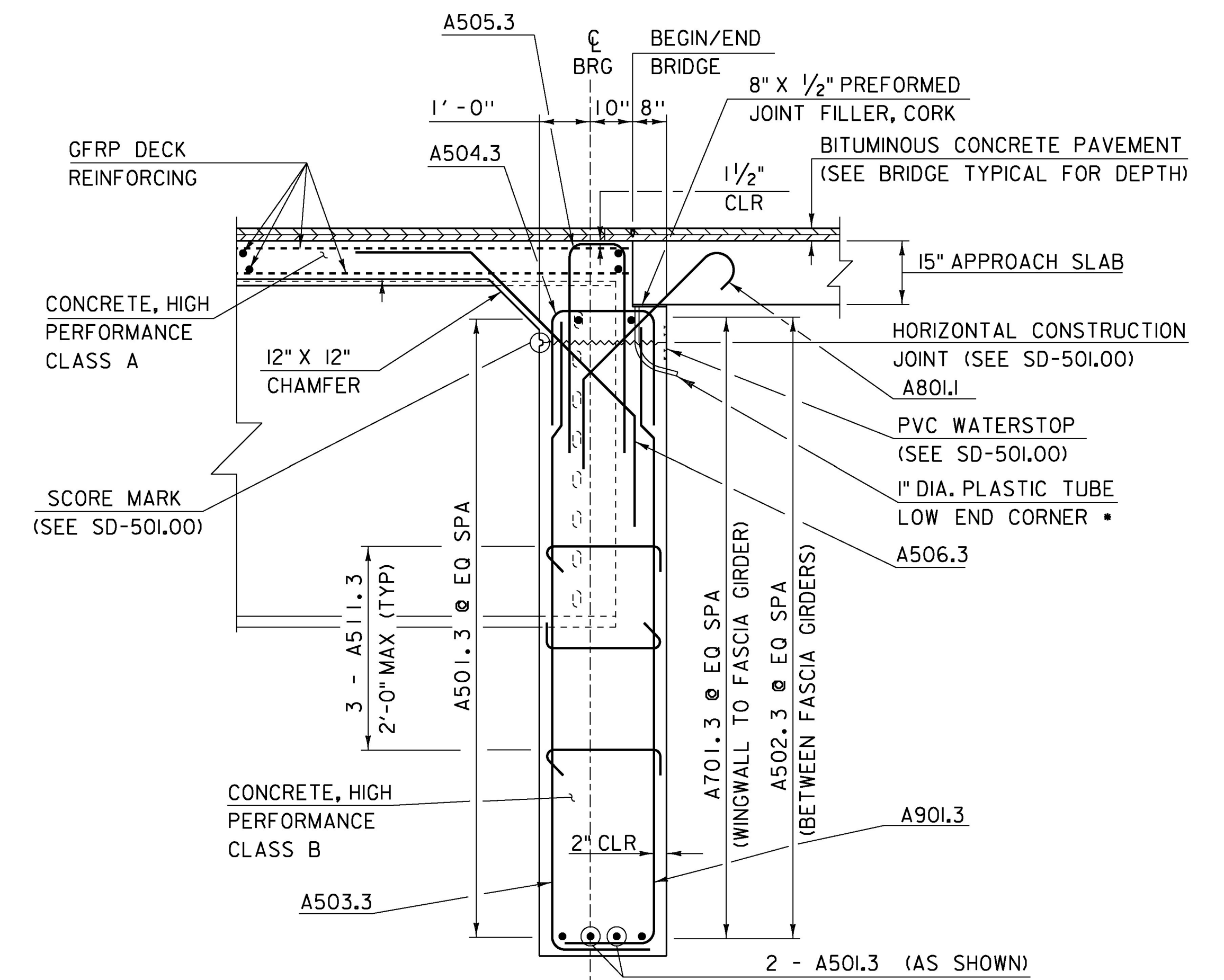
SCALE 1/4" = 1'-0"

- ANTICIPATED TOP OF GIRDER ELEVATIONS AT THE COMPLETION OF STEEL FRAMING ERECTION ARE:
- GIRDER 1 = 661.56
 - GIRDER 2 = 662.10
 - GIRDER 3 = 662.64
 - GIRDER 4 = 663.17
 - GIRDER 5 = 663.71



ABUTMENT #1 ELEVATION

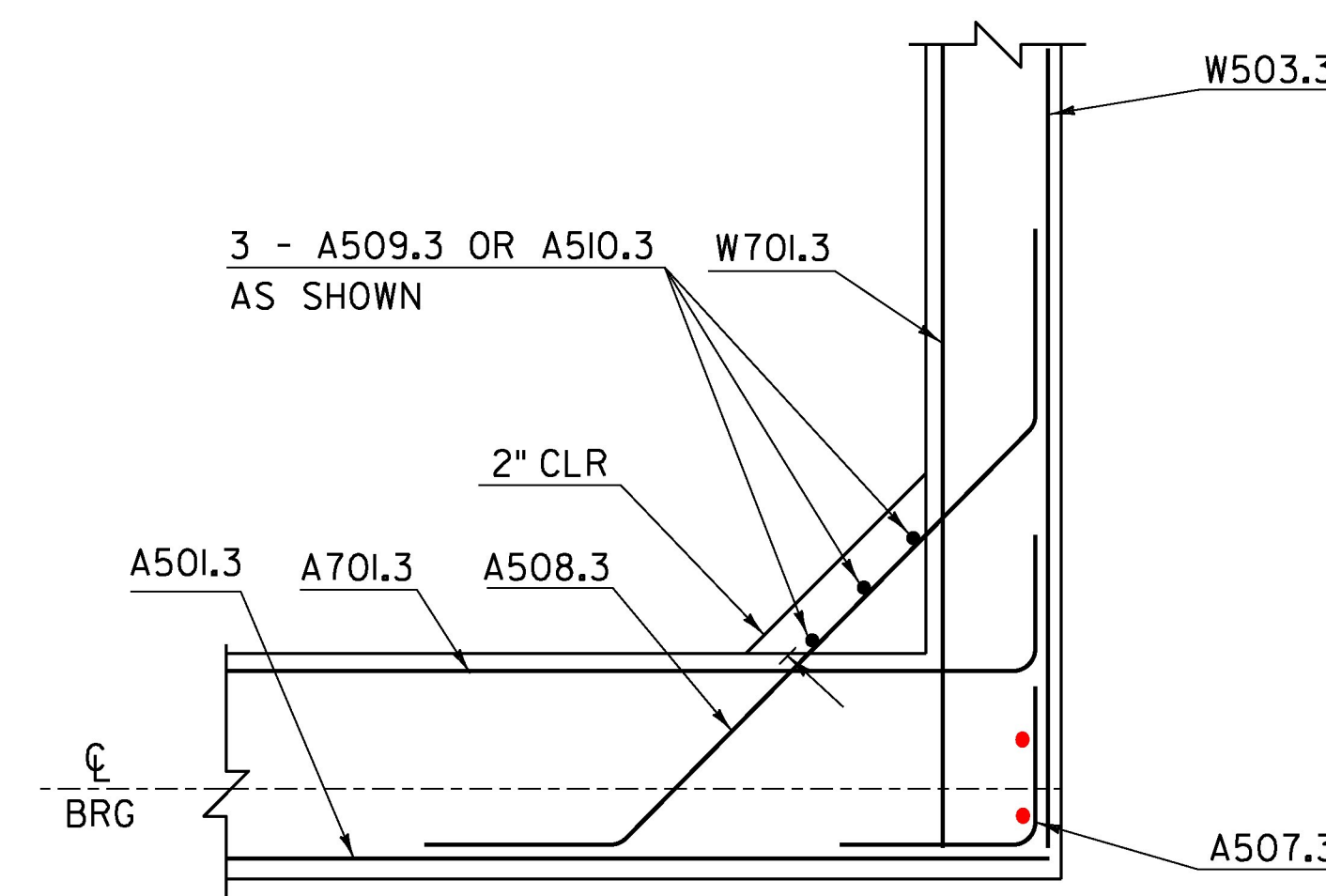
SCALE 1/4" = 1'-0"



ABUTMENT TYPICAL

SCALE 1/2" = 1'-0"

- NOTE
- 1 INCH DIAMETER PLASTIC DRAIN TUBES SHALL CONFORM TO SUBSECTION 740.01 AND BE INSTALLED BY THE CONTRACTOR AT THE LOCATIONS SHOWN. THE DRAIN TUBES SHALL LATERALLY EXTEND A MINIMUM OF 6 INCHES INTO THE SUBBASE, INCLUDING THROUGH THE FULL THICKNESS OF GEOGRID-COMPRESSIBLE INCLUSION (ABUTMENT 2). PAYMENT FOR FURNISHING AND INSTALLING THE DRAIN TUBES WILL BE MADE UNDER ITEM 501.34, "CONCRETE, HIGH PERFORMANCE CLASS B"

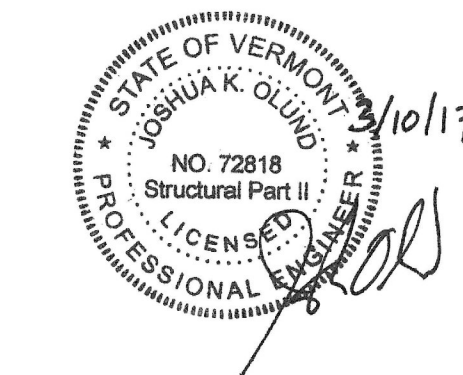


TYPICAL CORNER REBAR

SCALE 1/2" = 1'-0"
(VERTICAL BARS NOT SHOWN FOR CLARITY)

NOTE:

- NF = NEAR FACE
- FF = FAR FACE
- EF = EACH FACE
- ▲ = CUT TO FIT IN FIELD
- 3" CLEAR, UNLESS OTHERWISE SPECIFIED ON THE PLANS.
- 2'-2" BAR LAP UNLESS OTHERWISE SPECIFIED ON THE PLANS.
- EQ SPA = EQUALLY SPACED



TYLIN INTERNATIONAL

PROJECT NAME:	MORRISTOWN
PROJECT NUMBER:	BRS 0240(3)S/STP HES 030-2(28)
FILE NAME:	s78f329sub.dgn
PROJECT LEADER:	C. CARLSON
DESIGNED BY:	J. OLUND
ABUTMENT #1 PLAN AND ELEVATION	
PLOT DATE:	12-APR-2017
DRAWN BY:	G. ROKES
CHECKED BY:	T. POULIN
SHEET	88 OF 175