

SLEEVES FOR UTILITIES (APPROXIMATE)

12" DIA. WATER SLEEVE
 FROM STA. 209+00.00 7.70' RT
 TO STA. 209+01.50 17.00' RT

NOTE: CONTRACTOR TO NOTIFY MORRISVILLE WATER AND LIGHT DEPT. (MWLT)
 WITH A MINIMUM OF TWO WEEKS NOTICE FOR ONE 12 HOUR SHUT DOWN
 IF NEEDED FOR CATTLE PASS INSTALLATION BY CALLING
 MWLT AT (802)-888-3348.

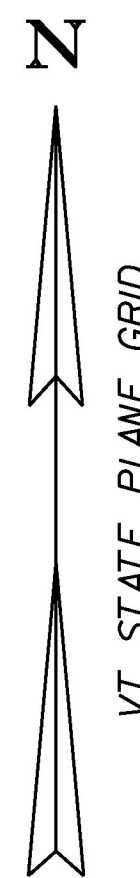
TEMPORARY HARD GUARD INSULATION BRIGHT YELLOW
 (BY OTHERS)

TEMPORARY SUPPORT
 FOR EXCAVATION
 NEAR POLE

INTERSECTION
 VT-15A STA. 118+33.00
 VT-15 STA. 210+75.00
 AT 15° RIGHT

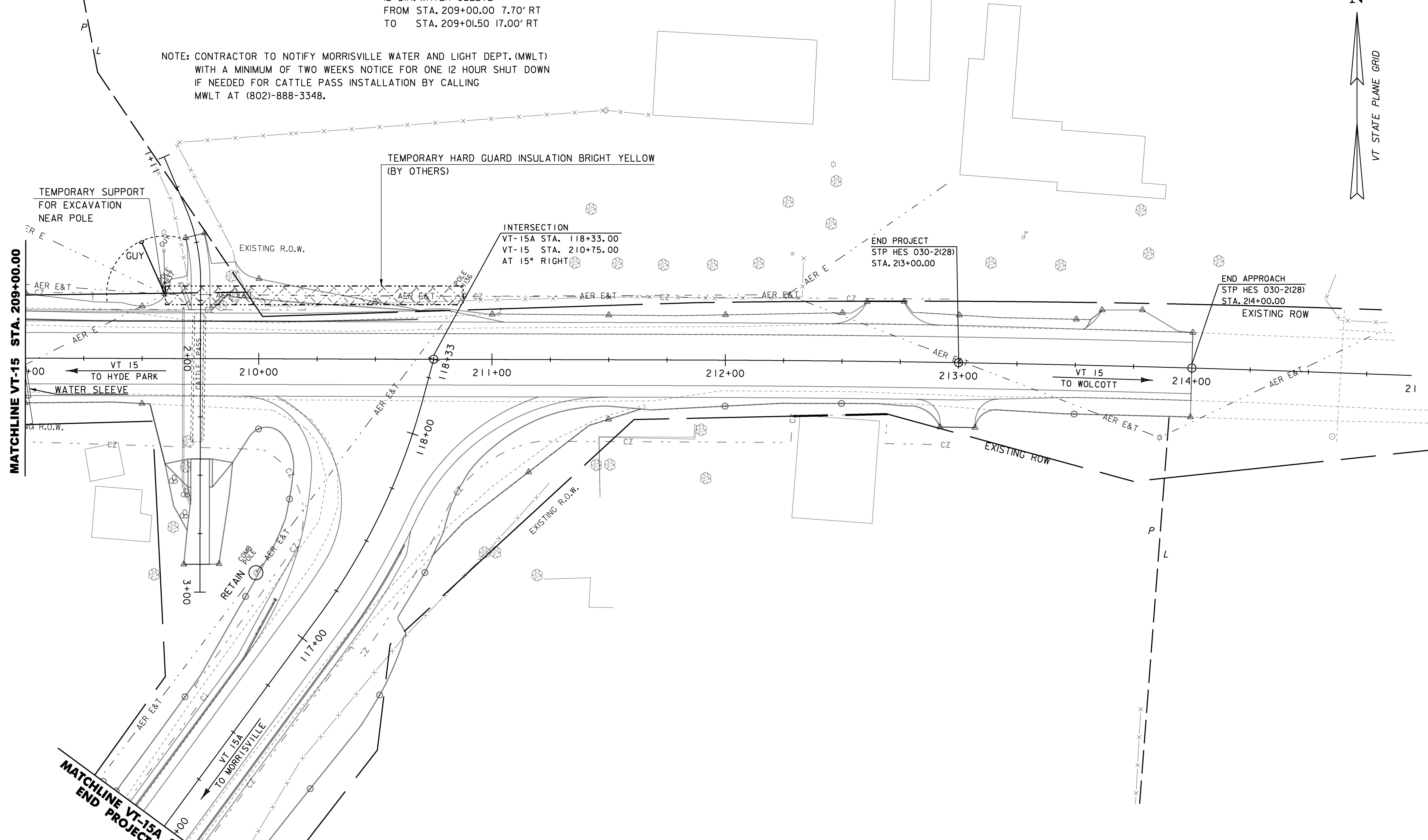
END PROJECT
 STP HES 030-2(28)
 STA. 213+00.00

END APPROACH
 STP HES 030-2(28)
 STA. 214+00.00
 EXISTING ROW



MATCHLINE VT-15 STA. 209+00.00

MATCHLINE VT-15A STA 116+00.00
 END PROJECT BRS 020(3)S



SCALE 1" = 20' - 0"
 20 0 20

PROJECT NAME:	MORRISTOWN
PROJECT NUMBER:	BRS 0240(3)S/STP HES 030-2(28)
FILE NAME:	s78f329u11bdr.dgn
PROJECT LEADER:	C. CARLSON
DESIGNED BY:	C. BURRALL
VT 15 UTILITIES LAYOUT SHEET 2	
PLOT DATE:	12-APR-2017
DRAWN BY:	G. ROKES
CHECKED BY:	J. LACROIX
SHEET	61 OF 175