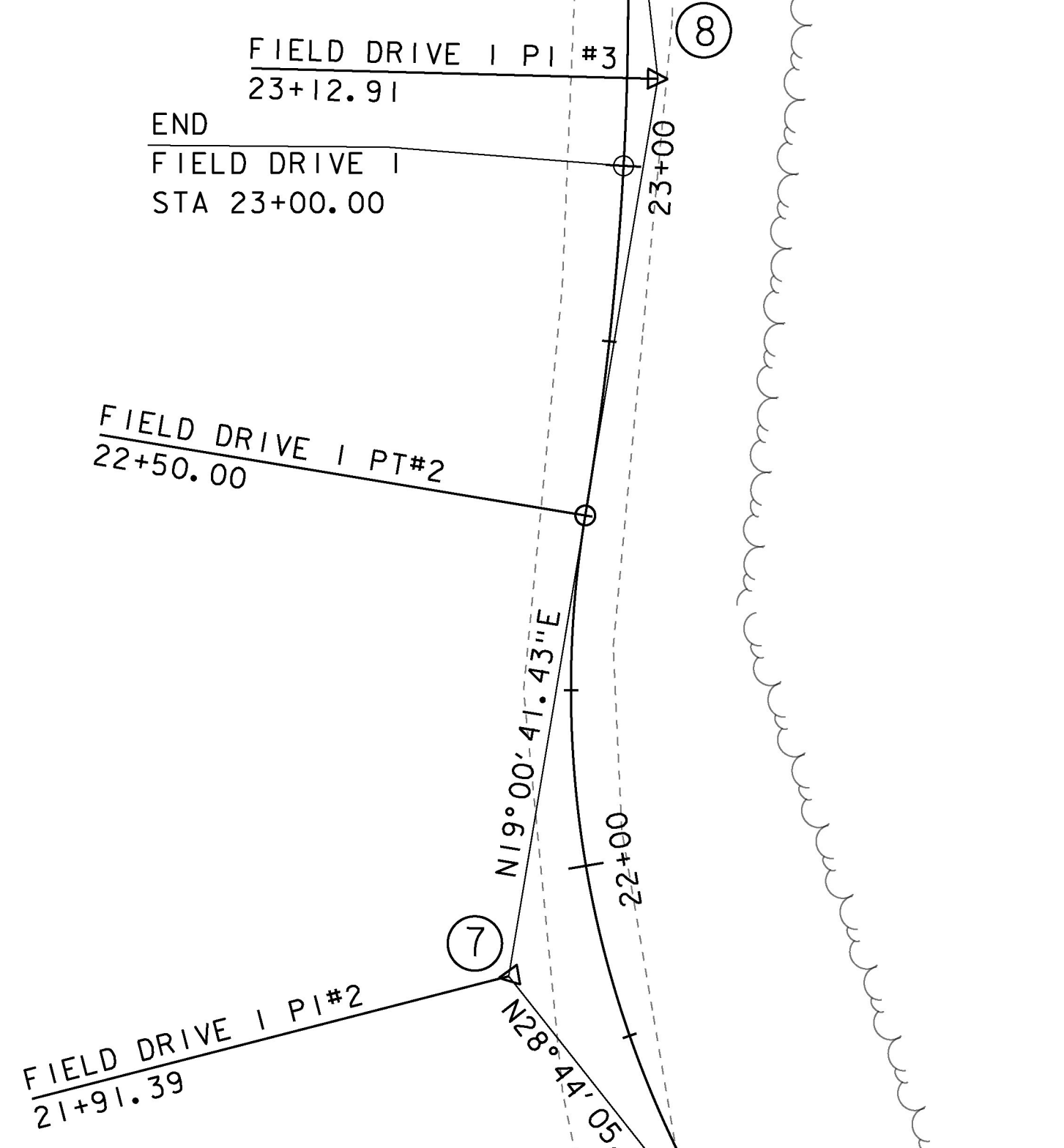


⑦
FIELD DRIVE 1 CURVE 2
DELTA = 47°44'47"
D = 38°11'50"
R = 150.00'
T = 66.39'
L = 125.00'
E = 14.03'

⑧
FIELD DRIVE 1 CURVE 3
DELTA = 15°54'56"
D = 12°43'57"
R = 450.00'
T = 62.91'
L = 125.00'
E = 4.38'

⑨
RAIL TRAIL CURVE 1
DELTA = 9°33'01"
D = 7°38'22"
R = 750.00'
T = 62.65'
L = 125.01'
E = 2.61'

②
VT-15A CURVE 3
DELTA = 64°15'00"
D = 9°00'00"
R = 636.62'
T = 399.74'
L = 713.89'
E = 115.10'



BEGIN TRAIL STA 52+50.00 =
RAIL VAL STA. 2478+12.00
MATCH EXISTING

POB
STA 51+96.78

PI
STA 52+89.57

S 79°39'32.38" E

PC
STA 52+26.92

BEGIN PROJECT
BRS 0240 (3) S
STA 104+75.00

PT
STA 53+51.93

S 70°06'31" E

PC
STA 106+81.63

VT 15A
TO MORRISVILLE

S 79°26'00.00" E

TO VT 15

PI
STA 101+93.63

BEGIN APPROACH
BRS 0240 (3) S
STA 102+00.00
MATCH EXISTING

SCALE 1" = 20' - 0"
20 0 20

PROJECT NAME:	MORRISTOWN
PROJECT NUMBER:	BRS 0240(3)S/STP HES 030-2(28)
FILE NAME:	s78f329allgnbdr.dgn
PROJECT LEADER:	C. CARLSON
DESIGNED BY:	C. BURRALL
VT 15A ALIGNMENT SHEET 1	
PLOT DATE:	12-APR-2017
DRAWN BY:	G. ROKES
CHECKED BY:	J. LACROIX
SHEET	21 OF 175

