

GPS CONTROL POINTS

HVCTRL #1

Standard Disk Stamped
 USGS C6 1927
 NORTH = 752404.463
 EAST = 1622969.566
 ELEV. = 666.833

TO REACH FROM THE CIVIL WAR MONUMENT AT THE INTERSECTION OF ROUTE 12 AND ROUTE 15A IN MORRISVILLE, GO EAST ALONG ROUTE 15A FOR 1.5 MI (2.4 KM) TO THE SITE OF THE MARK ON THE LEFT IN A 2 M (6.6 FT) X 6 M (19.7 FT) ROCK OUTCROP AT THE CREST OF A HILL, JUST ABOVE THE CROSSING OF THE LAMOILLE VALLEY RAILROAD AND THE STEEL BRIDGE OVER THE LAMOILLE RIVER. IT IS 23.5 M (77.1 FT) WEST OF THE CROSSING, 7.3 M (24.0 FT) NORTH OF AND ABOUT LEVEL WITH THE CENTERLINE OF ROUTE 15A, 4.8 M (15.7 FT) SOUTHWEST OF AND ABOUT 1.5 M (4.9 FT) HIGHER THAN THE SOUTHWEST RAIL OF THE LAMOILLE VALLEY RAILROAD, AND 6.5 FT (2.0 M) NORTHWEST OF A FIBERGLASS WITNESS POST.

HVCTRL #11

Standard Disk Stamped
 A02002
 NORTH = 752722.732
 EAST = 1620840.853
 ELEV. = 667.815

GENERAL LOCATION, MORRISTOWN VT. OWNERSHIP, DAVE WILLIAMS, 1092 PARK STREET, MORRISVILLE, VT 05661. TO REACH FROM THE INTERSECTION OF VT ROUTE 12 AND VT ROUTE 15A GO EAST ALONG VT ROUTE 15A FOR 1.0 MI TO THE SITE OF THE MARK ON THE RIGHT. TO REACH FROM THE INTERSECTION OF VT ROUTE 15A AND VT ROUTE 15 GO WEST ALONG VT ROUTE 15A FOR 0.6 MI TO THE SITE OF THE MARK ON THE LEFT. THE MARK IS SET IN THE TOP OF THE NORTH EDGE OF A 1.5 M X 0.8 M ROCK OUTCROP WHICH PROJECTS 0.4 M ABOVE GROUND SURFACE. IT IS 7.1 M SOUTH OF AND ABOUT 1.0 M HIGHER THAN THE CENTERLINE OF VT ROUTE 15A, 23.7 M NORTH NORTHEAST OF THE NORTHEAST CORNER OF THE WILLIAM'S HOUSE, 20.7 M NORTH NORTHWEST OF THE NORTHWEST CORNER OF A SHED, AND 22.7 M SOUTHEAST OF POLE NO 34/26 AND A FIBERGLASS WITNESS POST.

* Description provided by Vermont Agency of Transportation Geodetic Survey Unit

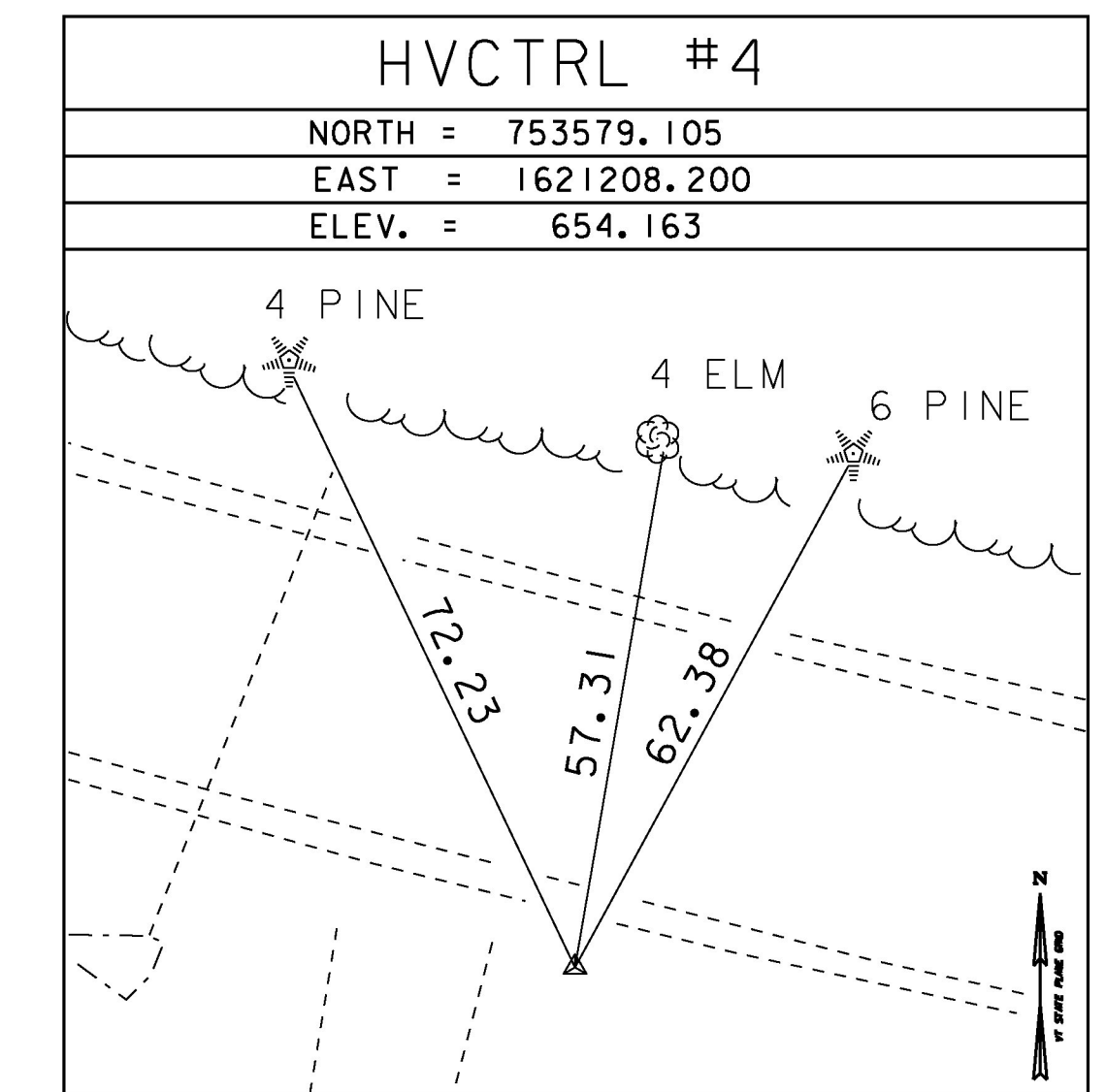
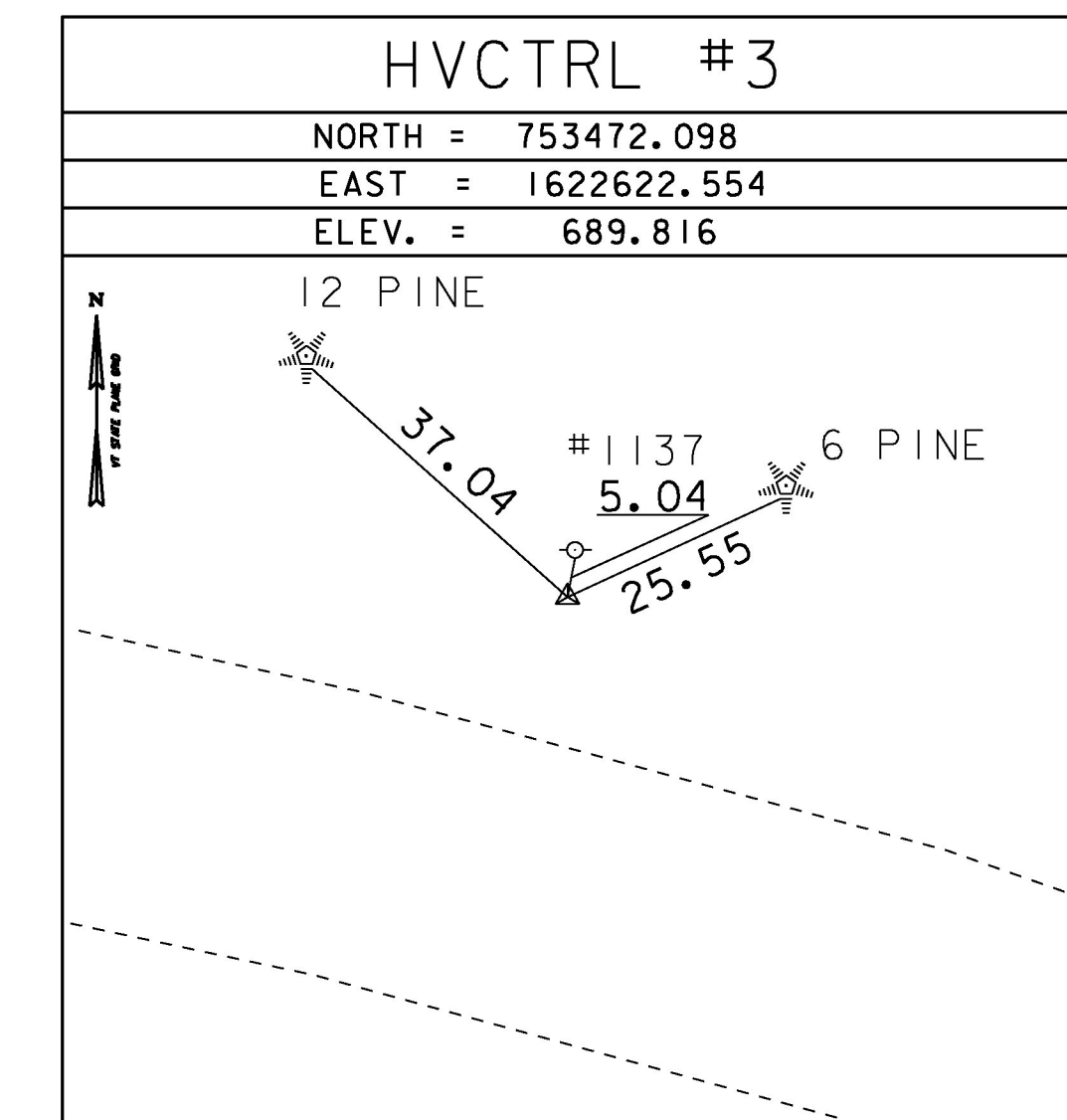
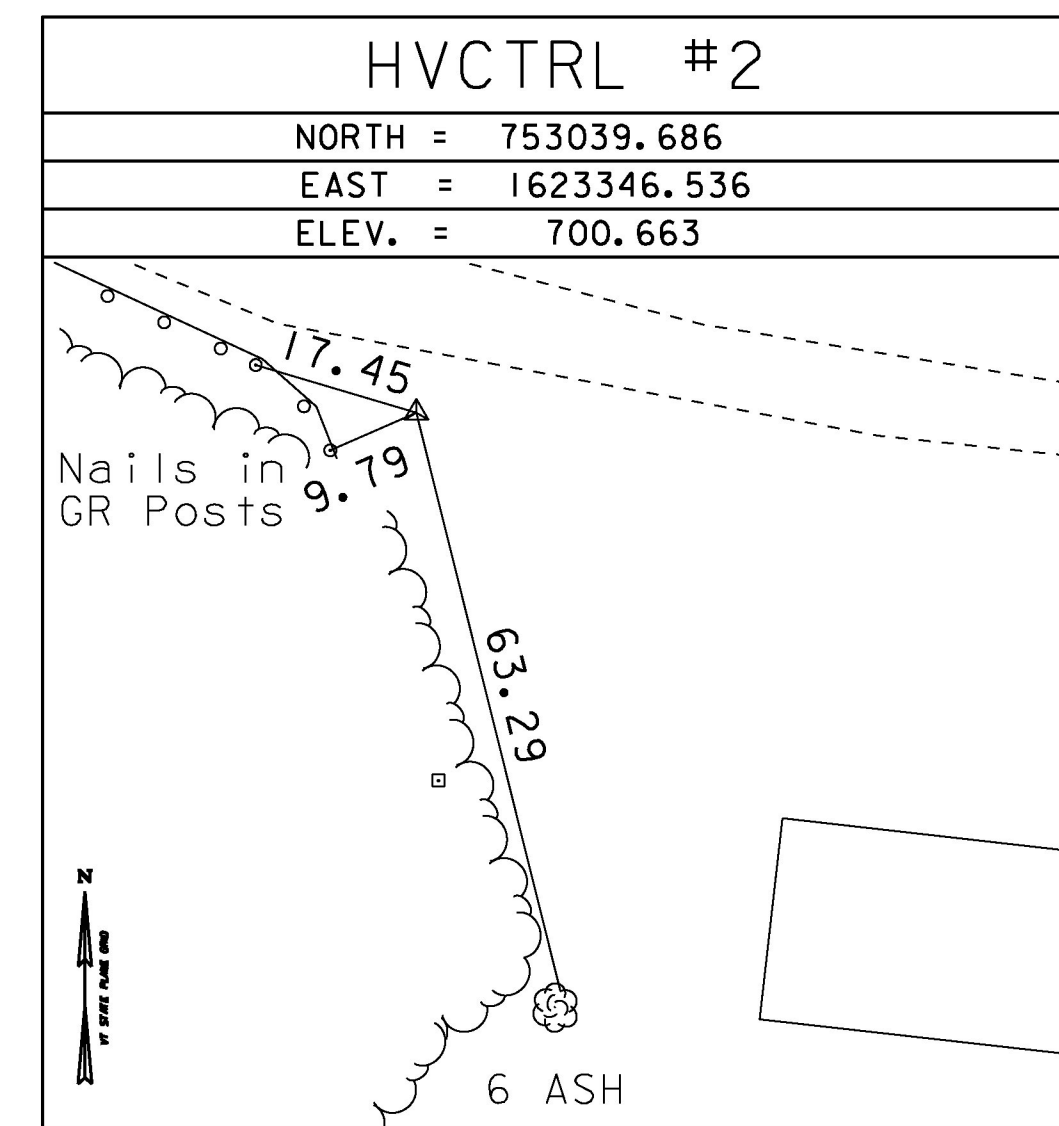
GPS CONTROL POINTS

HVCTRL #10

Standard Disk Stamped
 TENNEY 2004
 NORTH = 752743.700
 EAST = 1623537.930
 ELEV. = 663.635

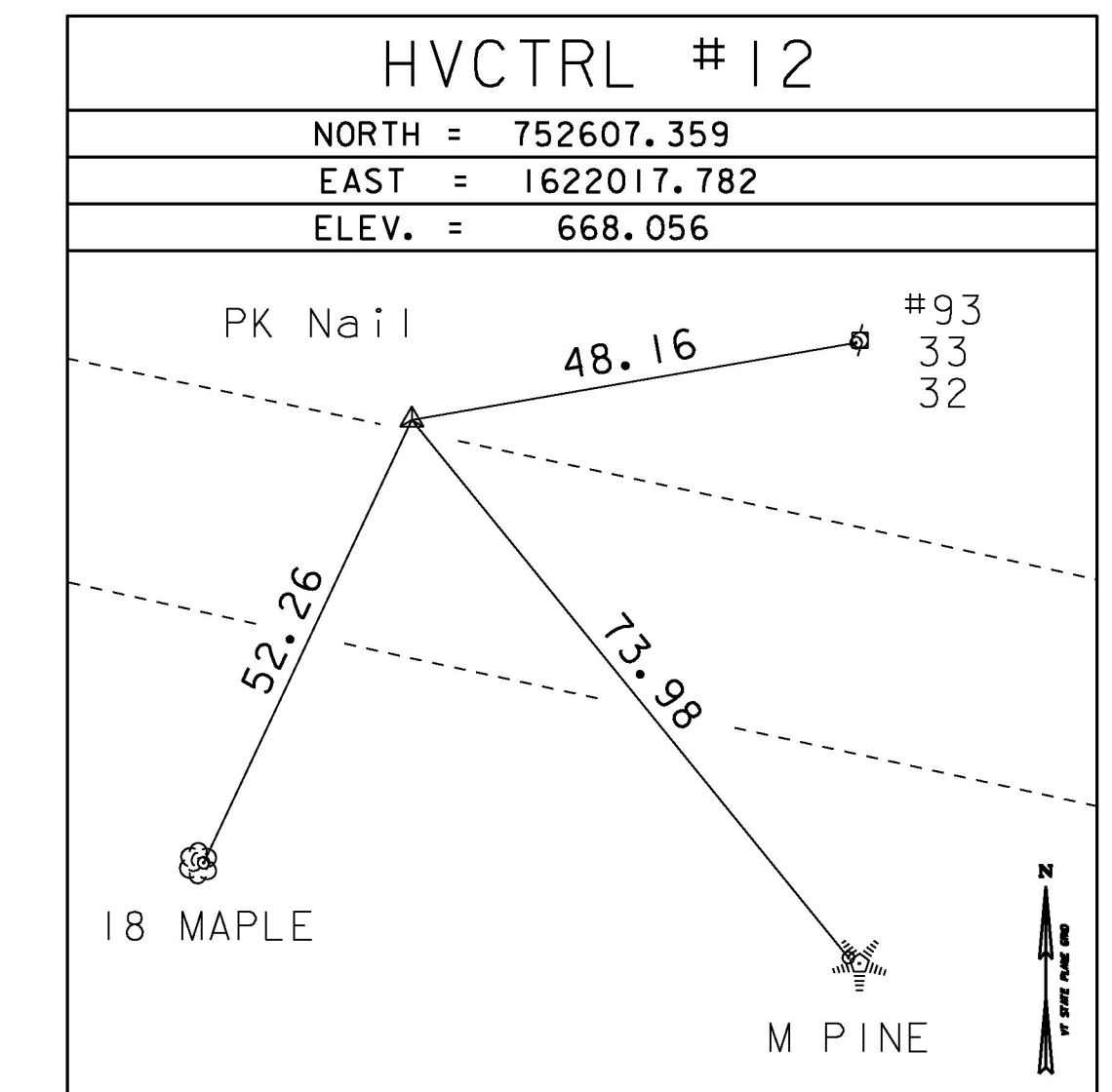
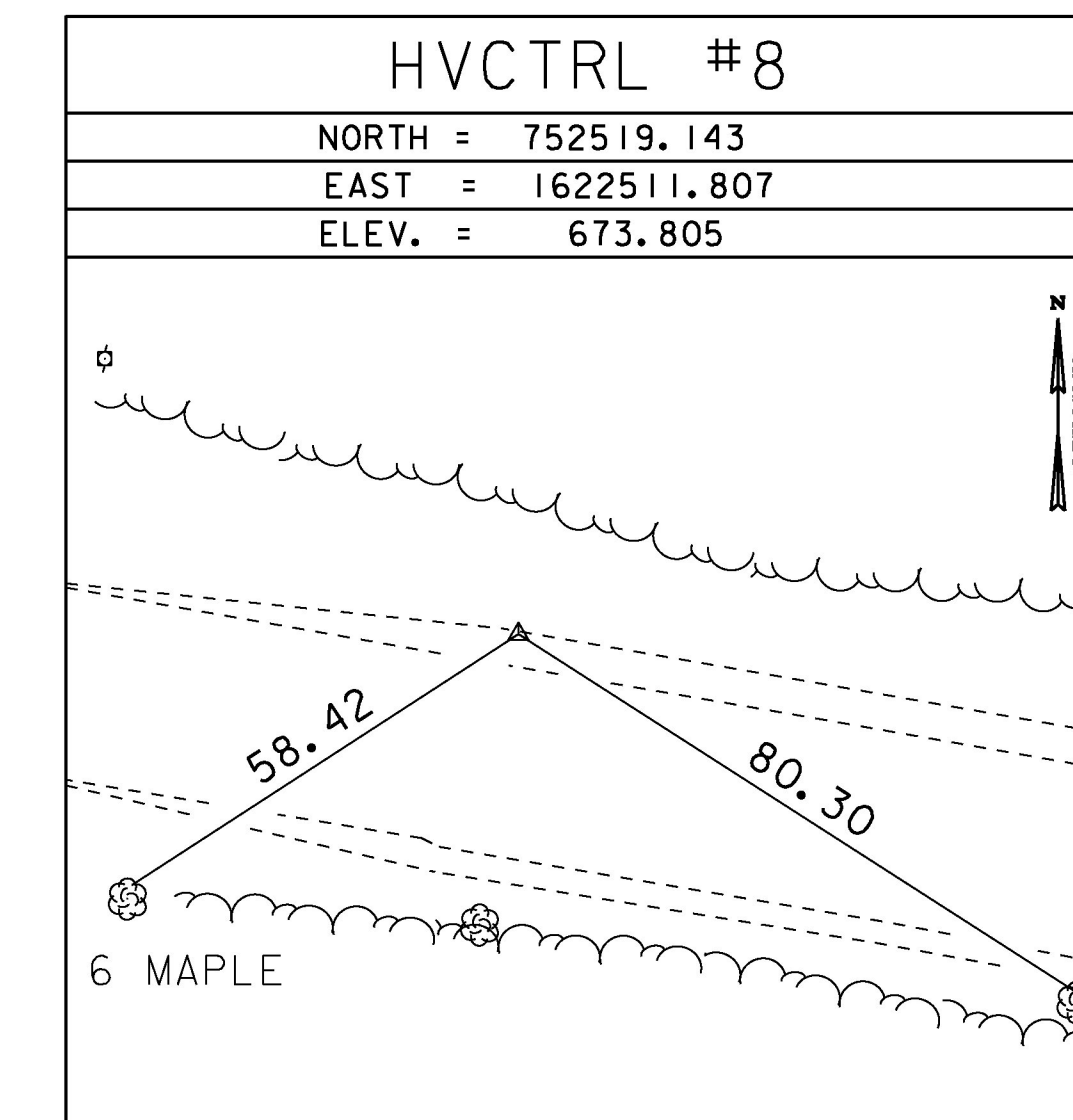
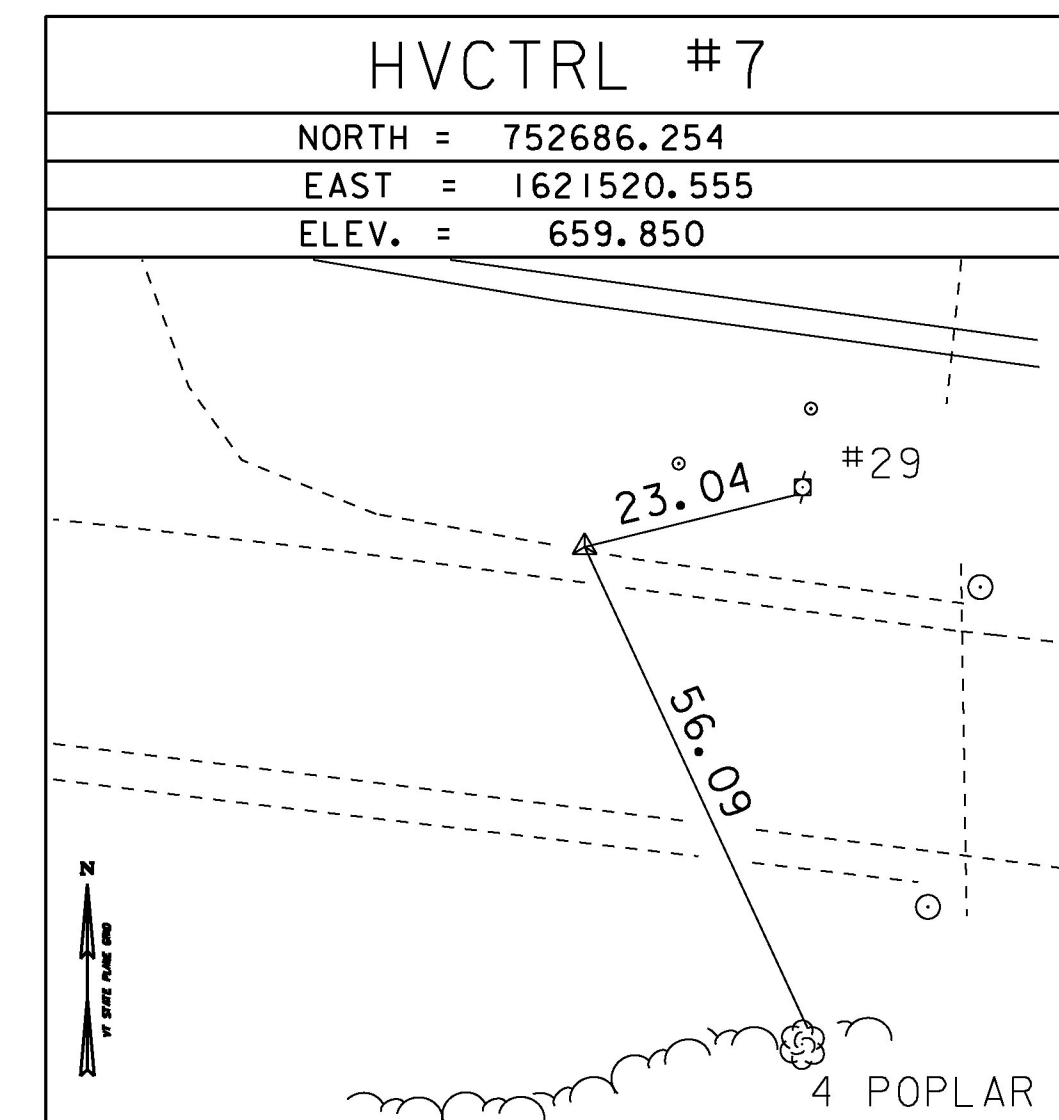
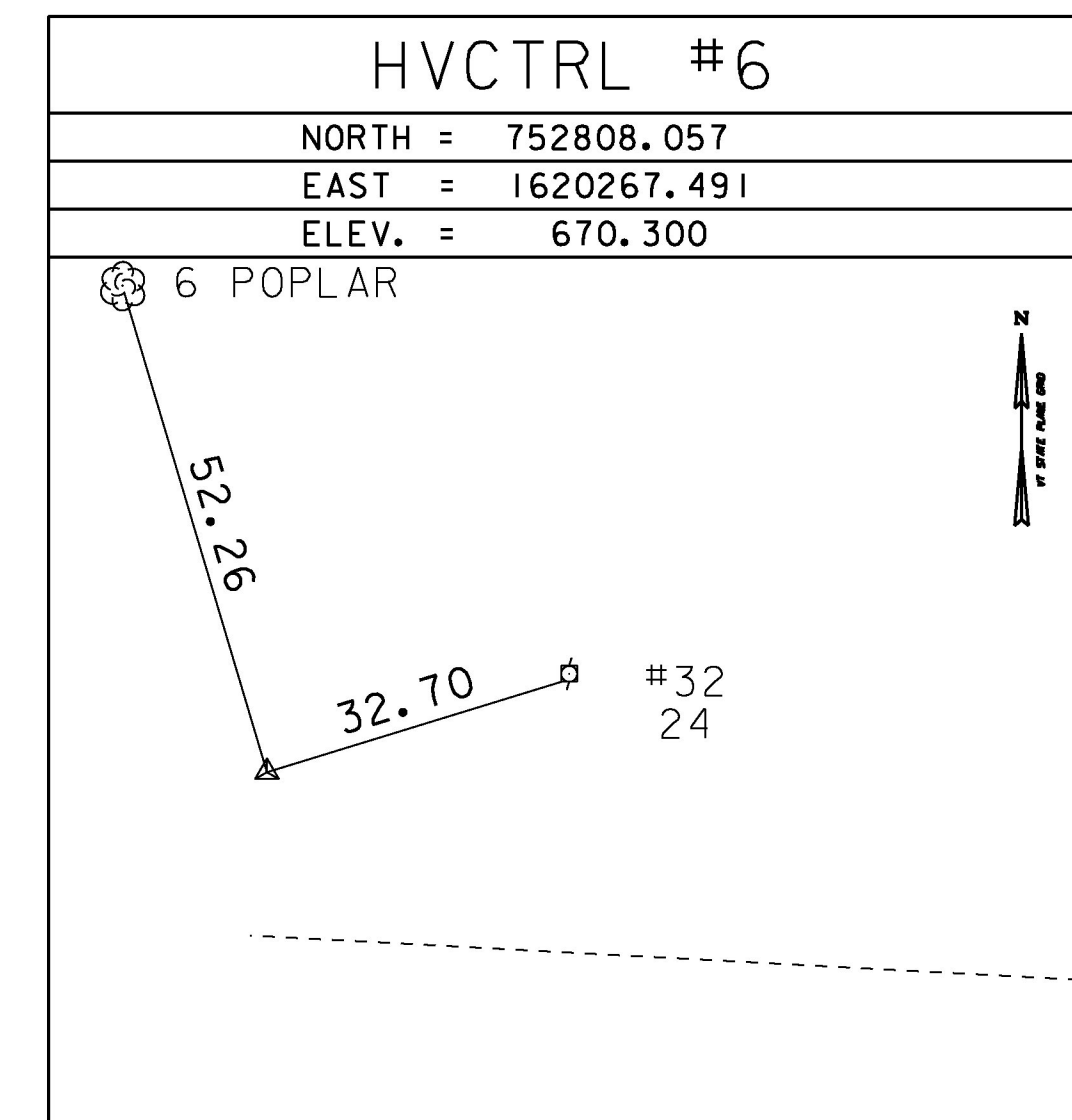
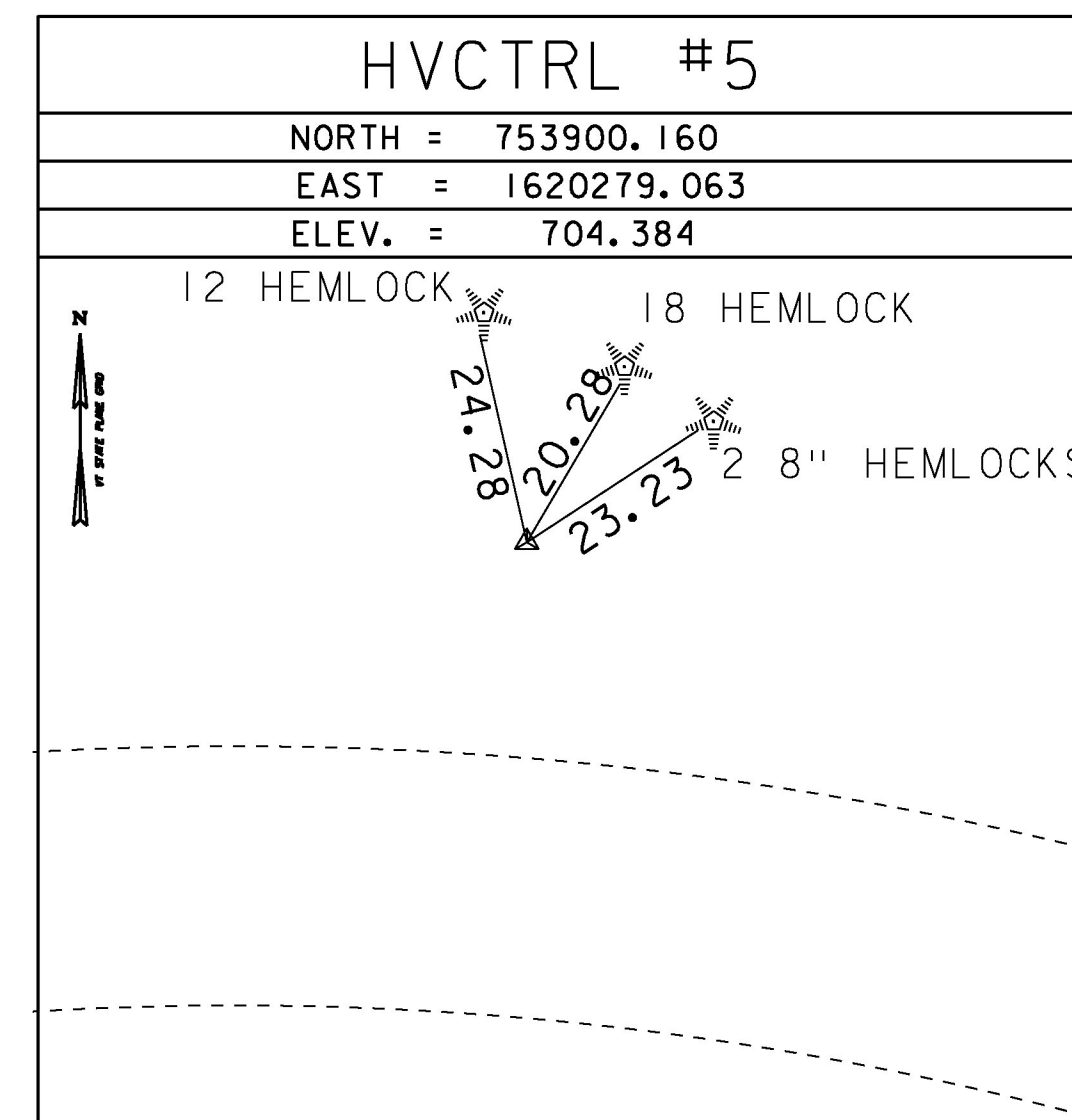
GENERAL LOCATION, MORRISTOWN, VT. TO REACH FROM THE INTERSECTION OF VT ROUTE 15 AND VT ROUTE 15A GO SOUTHWEST ALONG VT ROUTE 15A FOR ABOUT 110 M TO THE SITE OF THE MARK ON THE RIGHT. THE MARK IS SET 3 CM BELOW GROUND SURFACE IN THE TOP OF A FENO STYLE MONUMENT. IT IS 5.5 M NORTHWEST OF AND ABOUT 0.2 M LOWER THAN THE CENTERLINE OF VT ROUTE 15A, 9.3 M SOUTH SOUTHWEST OF AN UNNUMBERED POLE, 17.6 M EAST NORTHEAST OF THE CENTER OF THE WEST (OUTLET) END OF A 45 CM DIAMETER METAL CULVERT, 0.4 M SOUTHEAST OF A WIRE FENCE, AND 0.2 M SOUTHEAST OF A FIBERGLASS WITNESS POST.

TRAVERSE TIES



* Main Traverse Completed 02/21/1991 by J.Sheridan P.C. & R.Bullock & C.Harding

ALIGNMENT TIES



DATUM	
VERTICAL	NGVD 29
HORIZONTAL	NAD 83 (92)
ADJUSTMENT	COMPASS

PROJECT NAME: MORRISTOWN	
PROJECT NUMBER: BRS 0240 (3) S	
FILE NAME: X78F329T.DGN	PLOT DATE: 12-APR-2017
PROJECT LEADER: C. CARLSON	DRAWN BY: R. BULLOCK
DESIGNED BY:	CHECKED BY: G. HITCHCOCK
Tie Sheet	SHEET 19 OF 175