

GPS CONTROL POINTS

RUTLAND CORS ARP

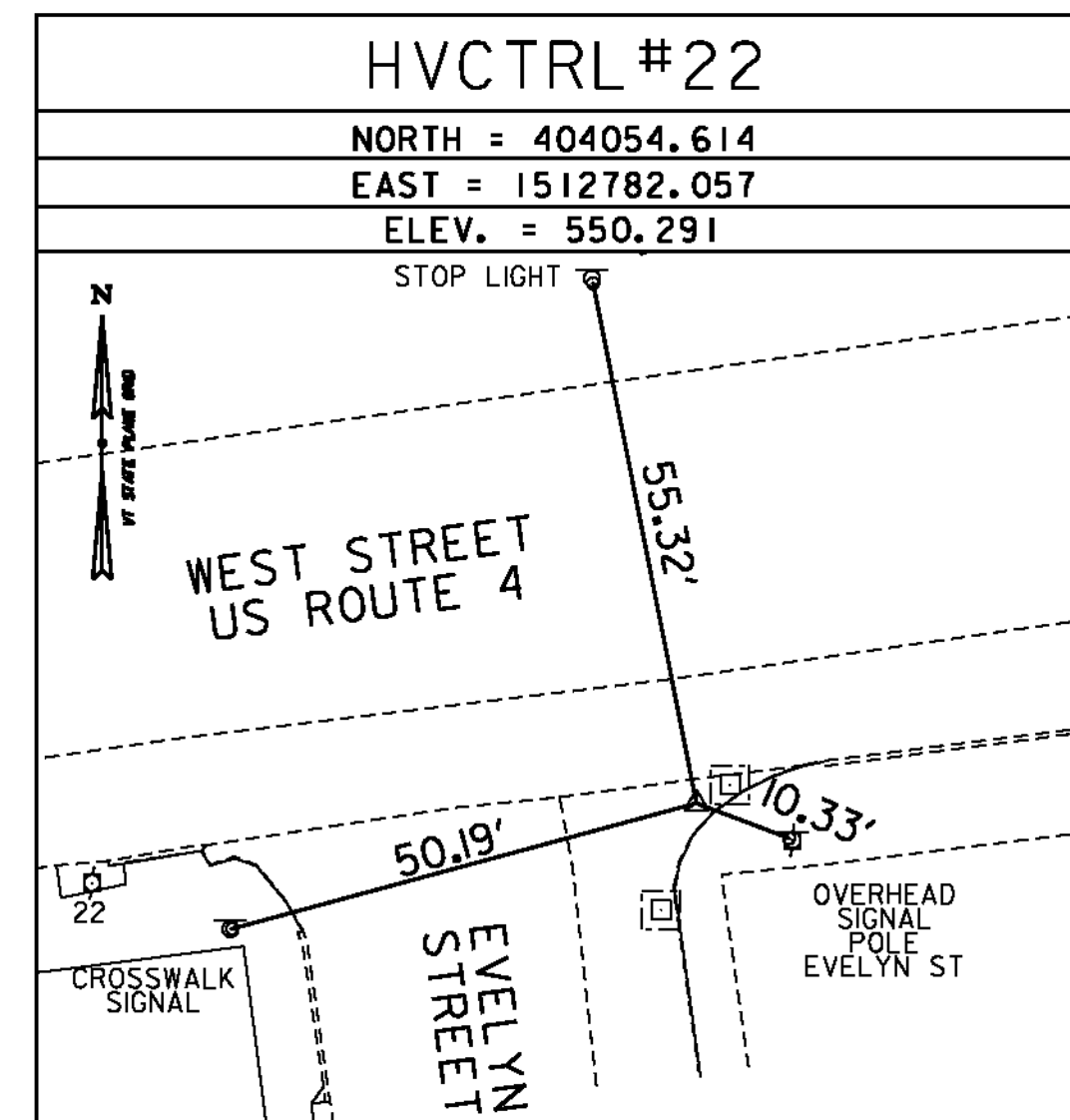
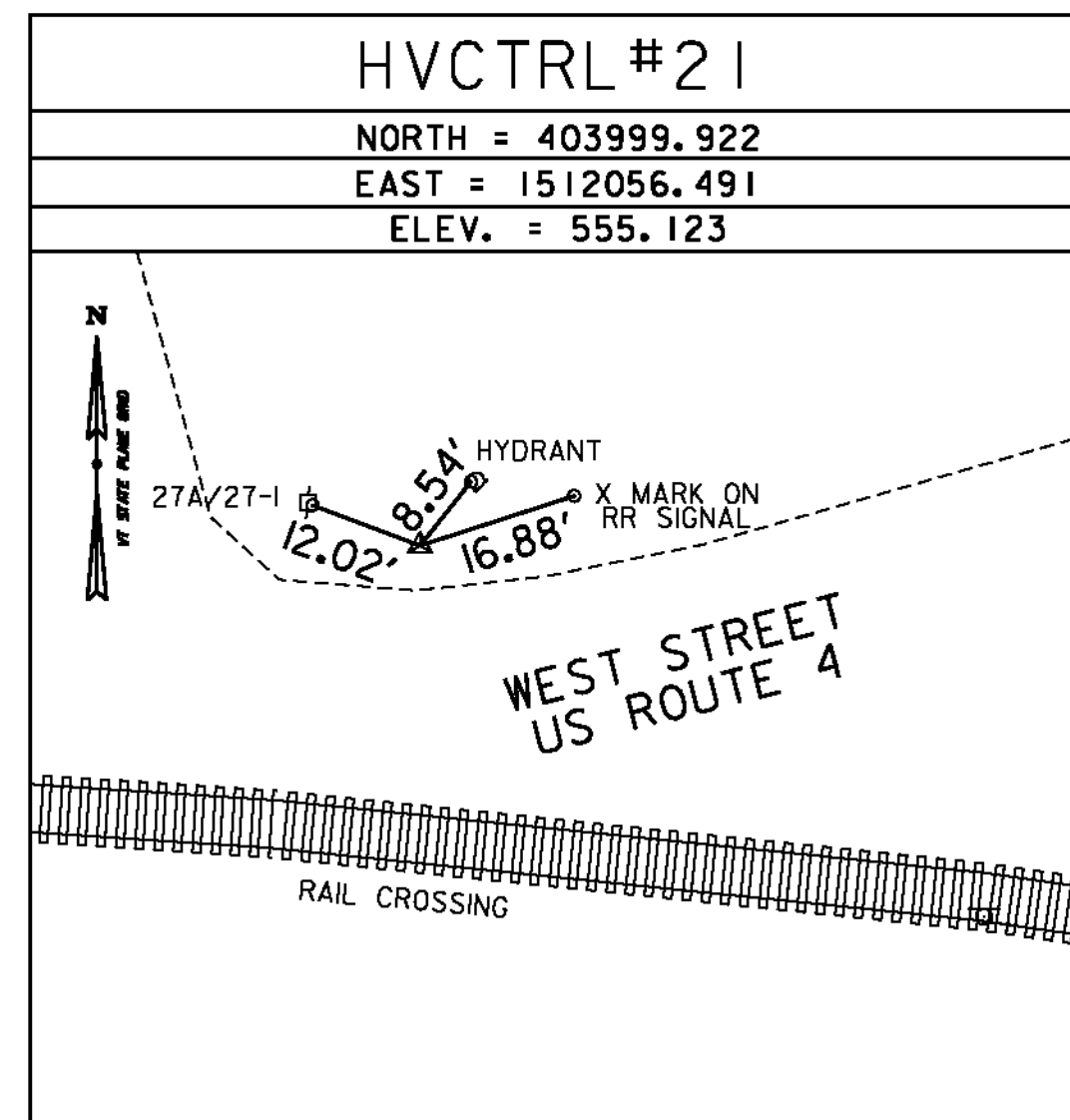
PID DK4109

N = 403876.10
 E = 1513436.07
 ELLIP HEIGHT = 529.69

STATION IS A GPS CONTINUOUSLY OPERATING REFERENCE STATION. STATION IS THE ANTENNA REFERENCE POINT OF THE GPS ANTENNA. THE MONUMENT IS ATTACHED TO A FIVE STORY CONCRETE BUILDING WITH A 8 FT CONCRETE FOUNDATION. THIS PORTION OF THE BUILDING HOUSES THE STAIRWELL AND ELEVATOR SHAFT FOR A PARKING GARAGE. THE BUILDING WAS BUILT IN 1999. THE MAST IS A 1.75 INCH DIA GALV PIPE THAT IS 108 INCHES LONG. THE MAST IS FIELD WELDED TO THREE STEEL MOUNTING STRUTS. THE TOP STRUT IS ATTACHED TO THE CONCRETE BUILDING WITH TWO 1/2 INCH SS BOLTS SECURED LEAD ANCHORS. THE OTHER TWO STRUTS ARE ATTACHED WITH 2 THROUGH BOLTS THAT CONSIST OF 1/2 INCH SS THREADED RODS AND NUTS.

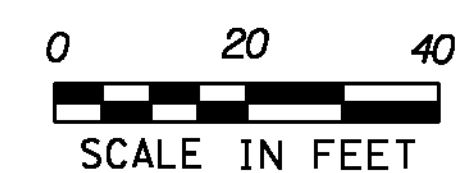
• DESCRIPTION PROVIDED BY VERMONT AGENCY OF TRANSPORTATION GEODETIC SURVEY UNIT

TRAVERSE TIES



* SURVEY COMPLETED: JUNE 20, 2012 BY VSE, M. HUDSON-PC, B. WRIGHT

| | |
|------------|--------------------|
| DATUM | |
| VERTICAL | NAVD 88(GEOD09) FT |
| HORIZONTAL | NAD 83(CORS) SFT |
| ADJUSTMENT | NONE |



GREEN INTERNATIONAL AFFILIATES, INC.
 CIVIL AND STRUCTURAL ENGINEERS

RUTLAND

| | |
|-------------------|----------------------|
| PROJECT NAME: | STATEWIDE |
| PROJECT NUMBER: | STP SDWK(II) |
| FILE NAME: | z11f1611_Rutland.dgn |
| PROJECT LEADER: | E. ATKINS |
| DESIGNED BY: | T. BIGELOW |
| RUTLAND TIE SHEET | |
| PLOT DATE: | 10/9/2013 |
| DRAWN BY: | S. MUSTO |
| CHECKED BY: | E. ATKINS |
| SHEET | 38 OF 53 |