

**REMOVAL OF EXISTING SIDEWALK (SOLID ROCK EXCAVATION)**

PLEASANT ST 3+25.0 - 4+96.4 RT  
 PLEASANT ST 5+26.9 - 5+53.5 RT  
 PLEASANT ST 5+39.1 - 5+72.6 LT  
 PLEASANT ST 6+00.7 - 6+20.3 RT  
 SITE 2 - KELLEY WAY - 15.0 SY

**VERTICAL GRANITE CURB**

PLEASANT ST 5+39.1 - 5+72.7 LT  
 PLEASANT ST 5+91.4 - 6+20.4 RT

**PRECAST REINFORCED CONCRETE CURB, TYPE B**

PLEASANT ST 3+25.0 - 3+58.5 RT  
 PLEASANT ST 3+81.3 - 3+93.0 RT  
 PLEASANT ST 4+21.8 - 4+45.8 RT  
 PLEASANT ST 4+85.1 - 4+96.3 RT  
 PLEASANT ST 5+26.9 - 5+58.2 RT  
 PLEASANT ST 5+26.9 - 5+58.2 RT  
 SITE 2 - KELLEY WAY - 41.4 LF

**REMOVAL OF EXISTING CURB**

PLEASANT ST 3+25.0 - 3+58.5 RT  
 PLEASANT ST 3+81.3 - 3+93.0 RT  
 PLEASANT ST 4+21.8 - 4+45.8 RT  
 PLEASANT ST 4+85.1 - 4+96.3 RT  
 PLEASANT ST 5+26.9 - 5+58.2 RT  
 PLEASANT ST 5+39.1 - 5+72.7 LT  
 PLEASANT ST 5+91.4 - 6+20.4 RT  
 SITE 2 - KELLEY WAY - 41.4 LF

**PORTLAND CEMENT CONCRETE SIDEWALK, 5 INCH**

PLEASANT ST 3+25.0 - 3+49.5 RT  
 PLEASANT ST 3+84.5 - 3+88.5 RT  
 PLEASANT ST 4+28.3 - 4+34.8 RT  
 PLEASANT ST 4+91.6 - 4+96.3 RT  
 PLEASANT ST 5+26.8 - 5+53.5 RT  
 PLEASANT ST 5+40.7 - 5+72.6 LT  
 PLEASANT ST 6+00.3 - 6+20.3 RT  
 SITE 2 - KELLEY WAY - 15.0 SY

**PORTLAND CEMENT CONCRETE SIDEWALK, 8 INCH**

PLEASANT ST 3+49.5 - 3+84.5 RT  
 PLEASANT ST 3+88.5 - 4+28.3 RT  
 PLEASANT ST 4+34.8 - 4+91.6 RT

**5 INCH SIDEWALK RAMP WITH DETECTABLE WARNING SURFACE**

PLEASANT ST 5+48.1 LT (TYPE 5)  
 PLEASANT ST 5+50.5 RT (TYPE D)  
 PLEASANT ST 6+05.1 RT (TYPE D)  
 SITE 2 - KELLEY WAY - 18 SF (TYPE D)

**DURABLE 24 INCH STOP BAR**

PLEASANT ST 5+78.1 - 5+94.7 RT

**DURABLE CROSSWALK MARKING**

PLEASANT ST 5+50.6

**REMOVAL OF EXISTING PAVEMENT MARKINGS**

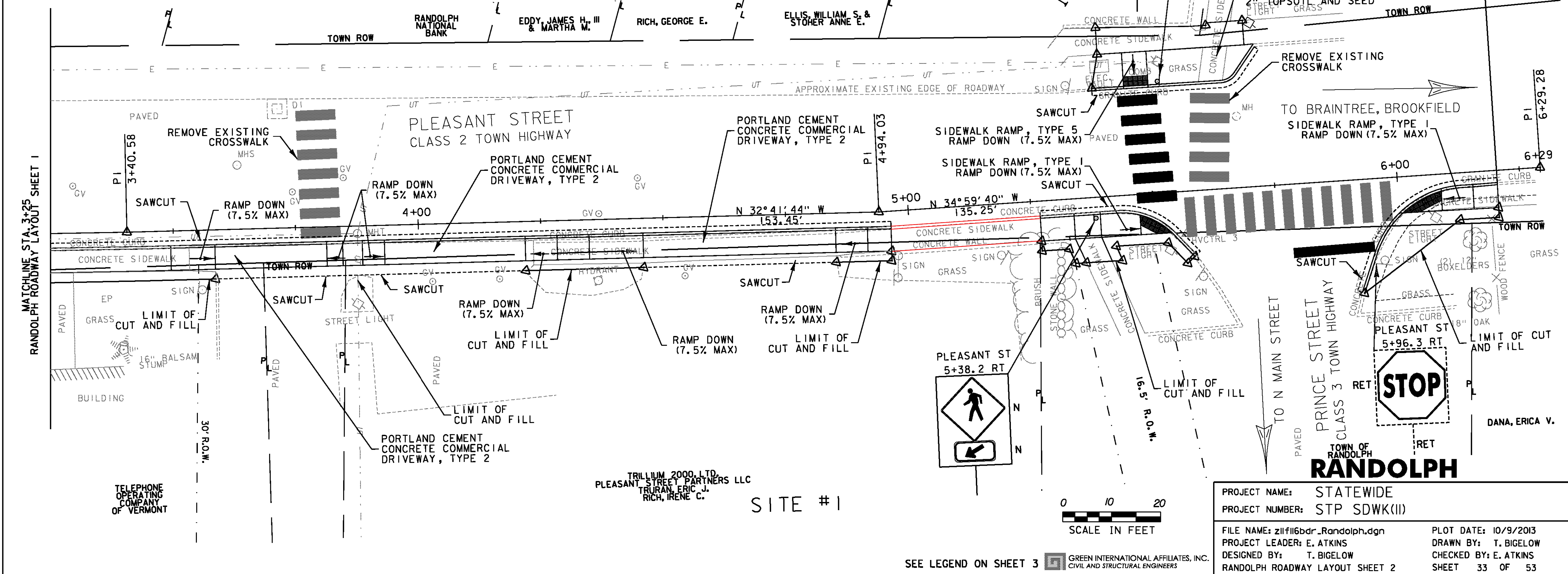
PLEASANT ST 3+79.7  
 PLEASANT ST 5+61.9 - 5+63.0 LT  
 PLEASANT ST 5+50.8

**SEED**

PLEASANT ST 3+44.4 - 3+58.5 RT  
 PLEASANT ST 4+21.8 - 4+45.8 RT  
 PLEASANT ST 4+85.1 - 4+96.3 RT  
 PLEASANT ST 5+26.8 - 5+35.7 RT  
 PLEASANT ST 5+39.1 - 5+57.8 RT  
 PLEASANT ST 5+39.1 - 5+72.5 LT  
 PLEASANT ST 5+91.8 - 6+20.3 RT  
 SITE 2 - KELLEY WAY - 67.7 SF

**SPECIAL PROVISION (HAND-PLACED BITUMINOUS CONCRETE MATERIAL, DRIVES)**

PLEASANT ST 3+58.4 - 3+81.3 RT  
 PLEASANT ST 3+93.0 - 4+21.8 RT  
 PLEASANT ST 4+45.8 - 4+85.1 RT



SEE LEGEND ON SHEET 3 GREEN INTERNATIONAL AFFILIATES, INC. CIVIL AND STRUCTURAL ENGINEERS

PROJECT NAME:	STATEWIDE
PROJECT NUMBER:	STP SDWK(II)
FILE NAME:	z11f116bdr_Randolph.dgn
PROJECT LEADER:	E. ATKINS
DESIGNED BY:	T. BIGELOW
PLLOT DATE:	10/9/2013
DRAWN BY:	T. BIGELOW
CHECKED BY:	E. ATKINS
RANDOLPH ROADWAY LAYOUT SHEET 2	SHEET 33 OF 53