

GPS CONTROL POINTS

RANDOLPH CORS ARP

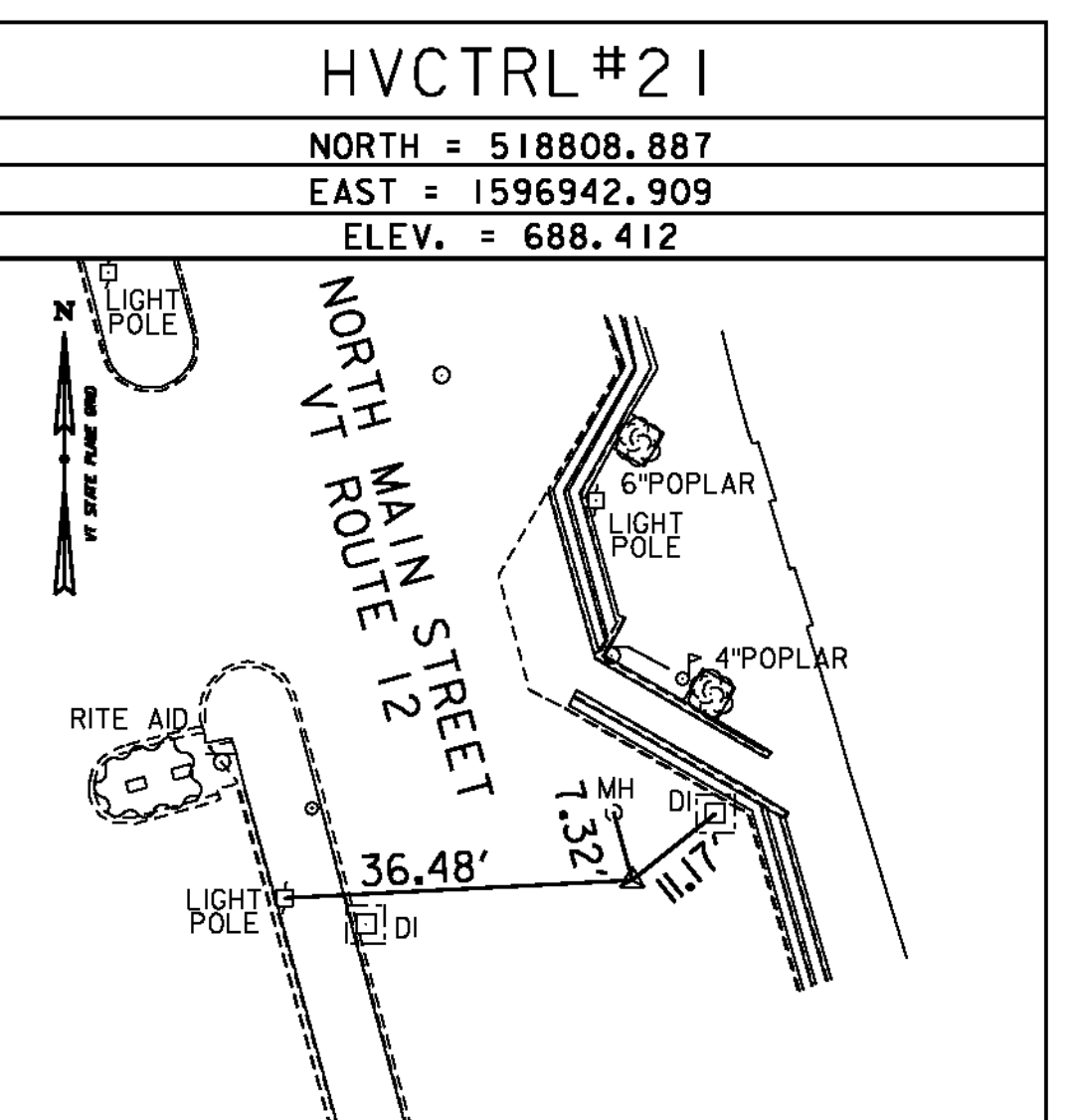
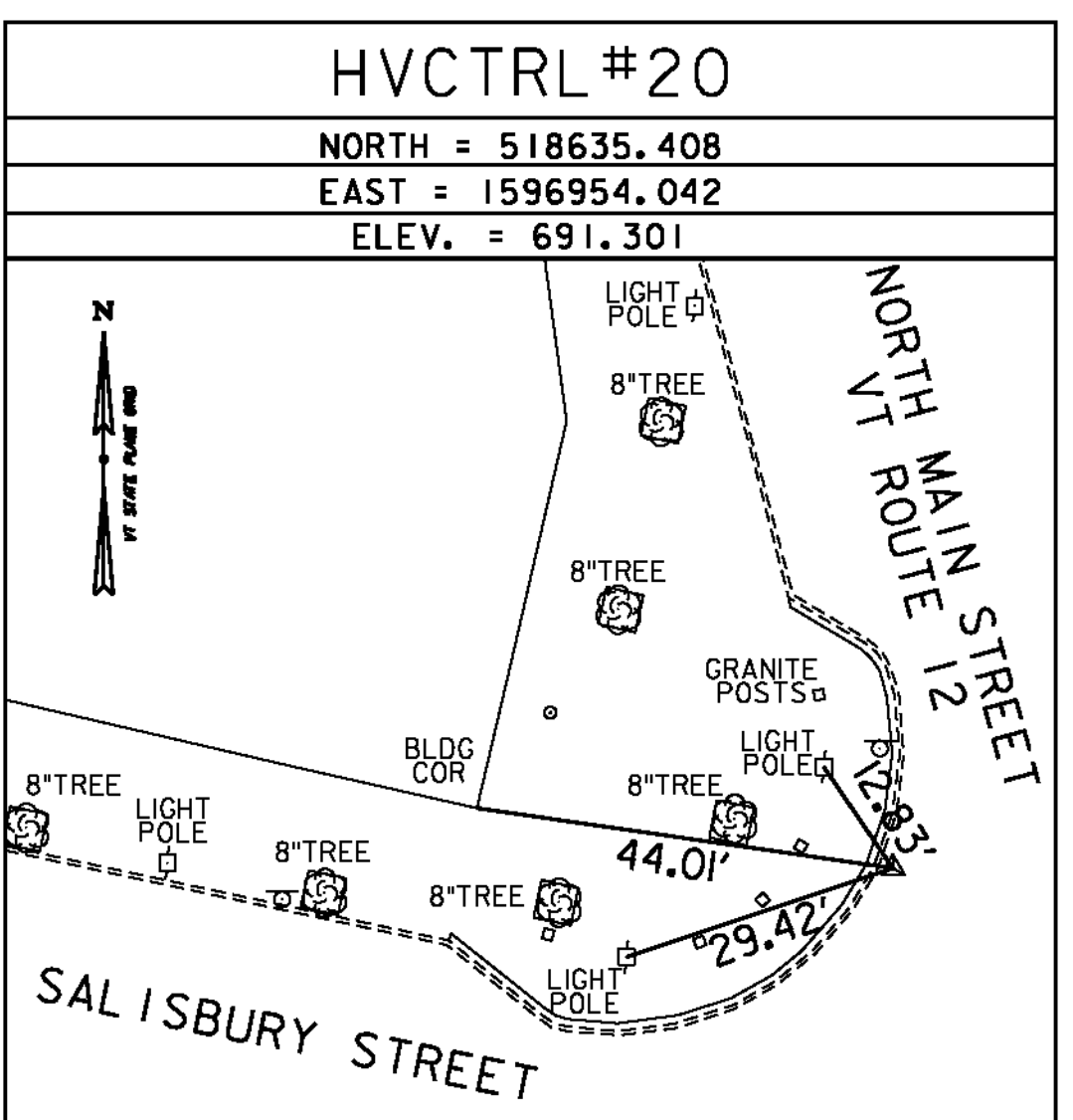
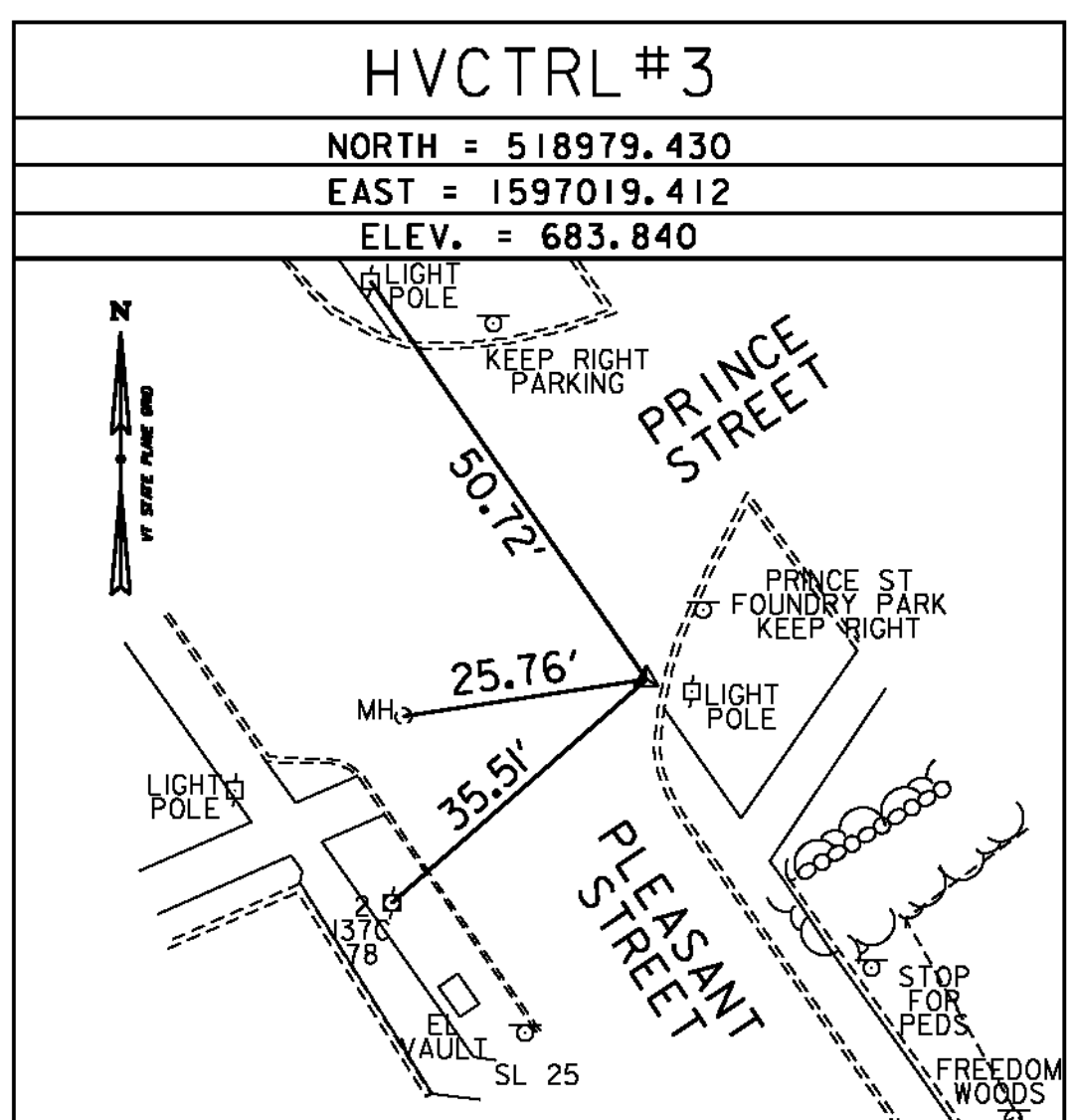
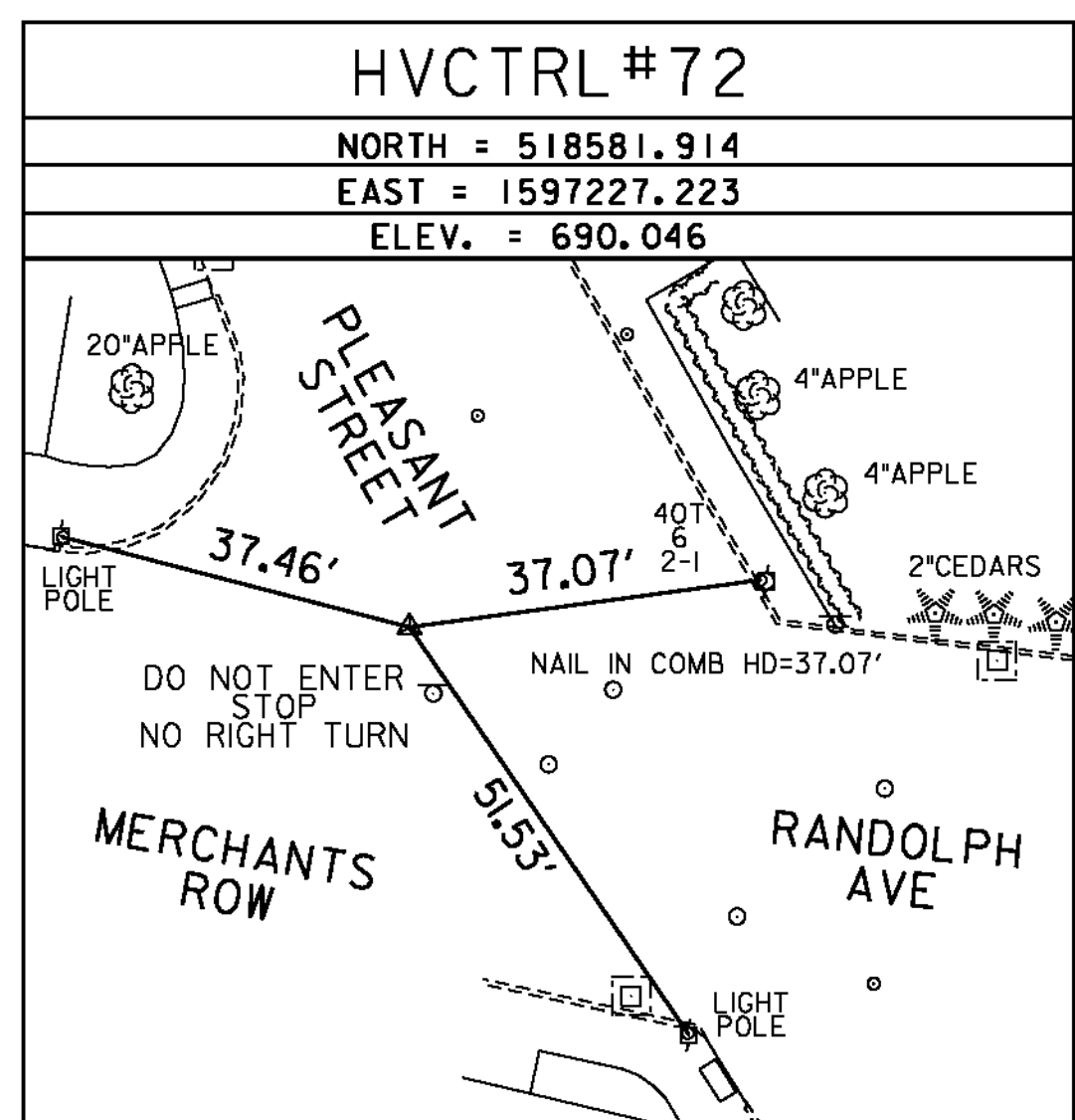
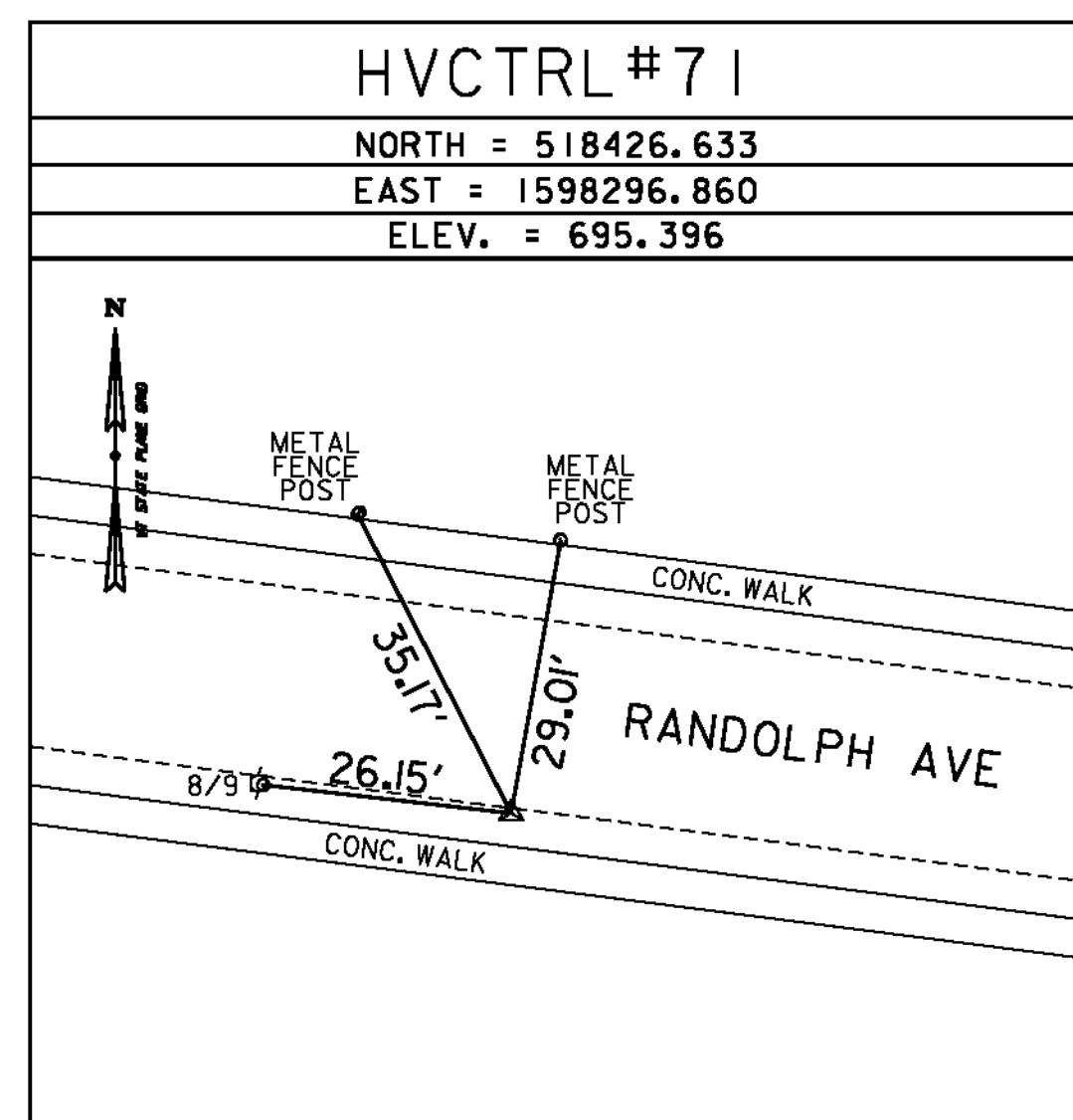
PID DJ8951

N = 524583.45
E = 1613715.07
ELLIP HEIGHT = 1329.21

STATION IS A GPS CONTINUOUSLY OPERATING REFERENCE STATION. STATION IS THE ANTENNA REFERENCE POINT OF THE GPS ANTENNA. THE ANTENNA IS MOUNTED ON THE ROOF OF GREEN HALL, ON THE CAMPUS OF VERMONT TECHNICAL COLLEGE, RANDOLPH, VT. THE MONUMENT IS ATTACHED TO A TWO STORY CONCRETE/BRICK BUILDING WITH A 10 FT CONCRETE FOUNDATION BUILT IN 1969. MAST IS A 1.75 INCH DIA GALV PIPE THAT IS 108 INCHES LONG. THE MAST ATTACHED TO A STEEL MOUNTING FRAME WITH THREE ATTACHMENTS CONSISTING OF 3/8 INCH SS THROUGH BOLTS. THE MOUNTING FRAME IS ATTACHED TO THE BUILDING USING 8 ATTACHMENT POINTS. THE TOP 2 AND BOTTOM 2 ARE 1/2 INCH SS BOLTS SECURED TO THE BRICK OR CONC WITH LEAD ANCHORS. THE MIDDLE 4 ATTACHMENTS ARE THROUGH BOLTED AND CONSIST OF 1/2 INCH SS THREADED ROD AND NUTS.

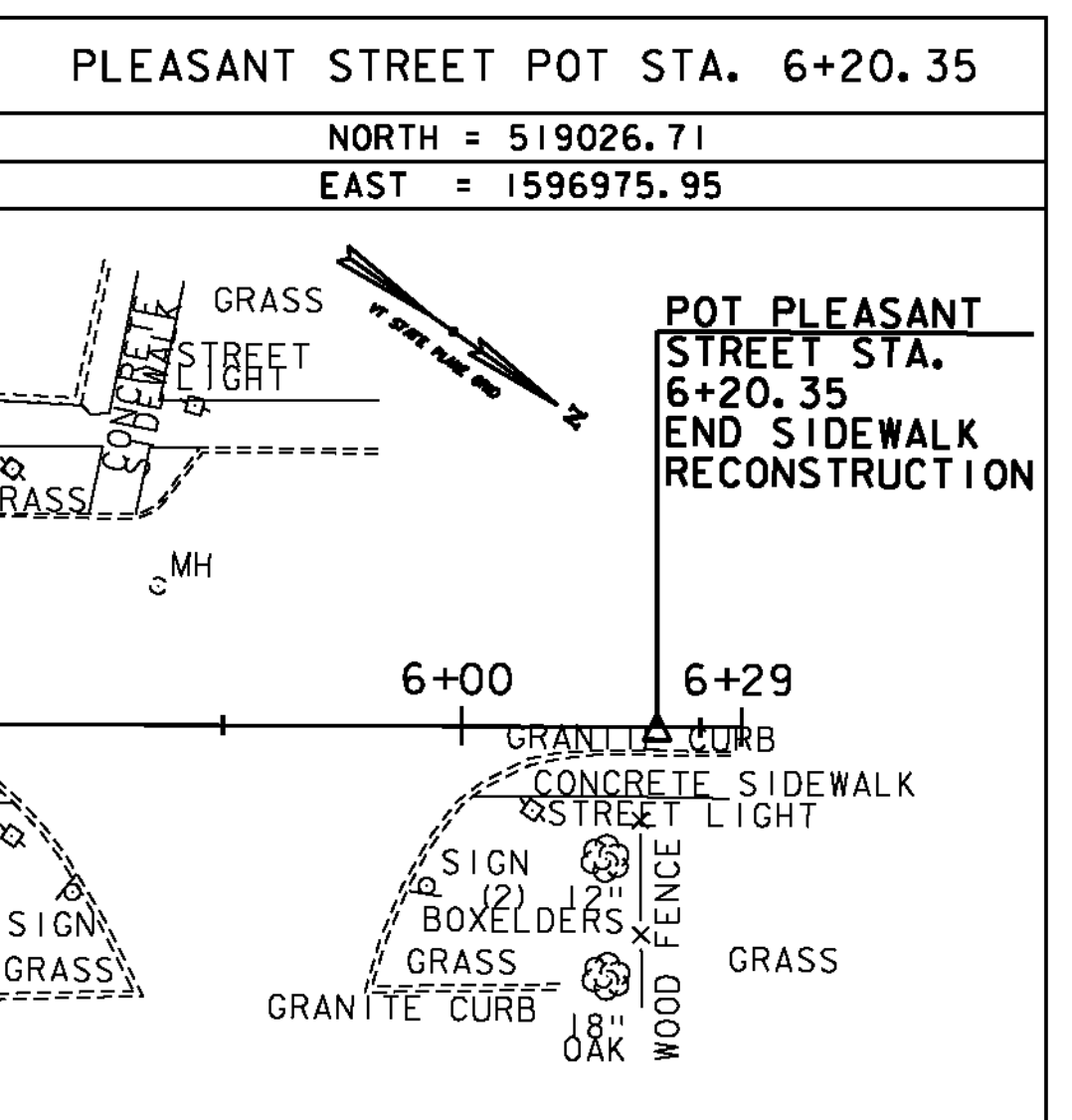
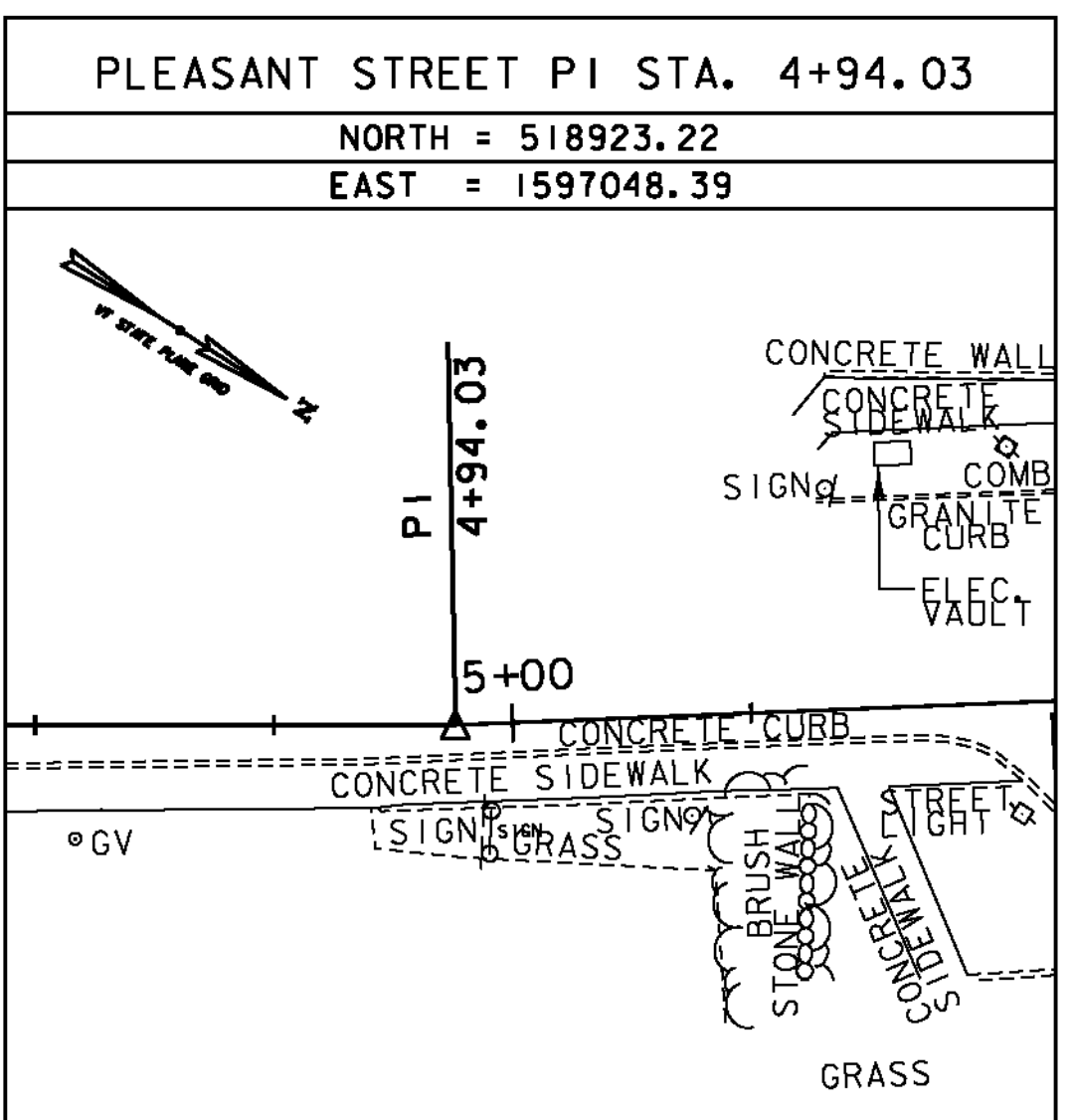
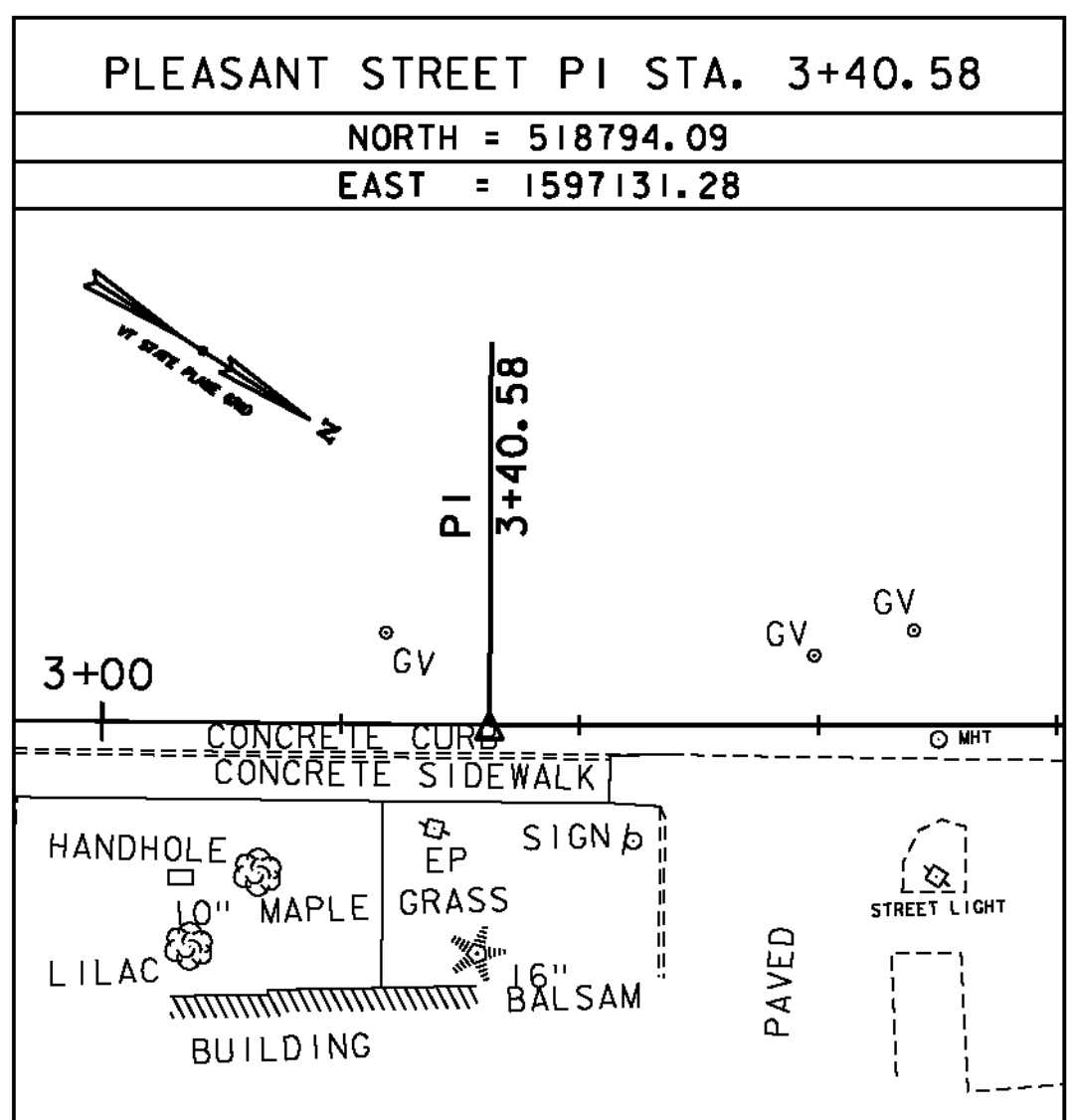
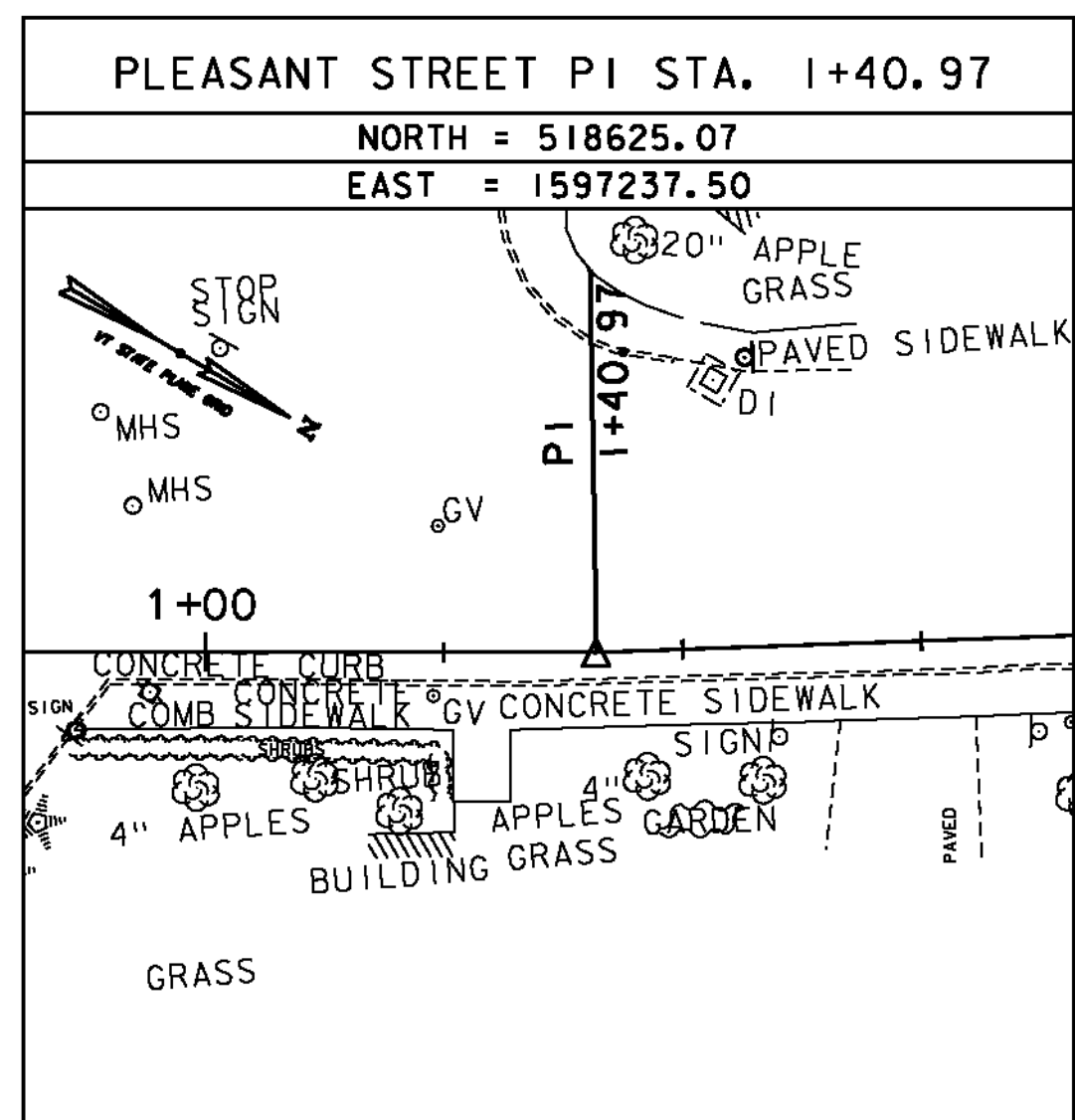
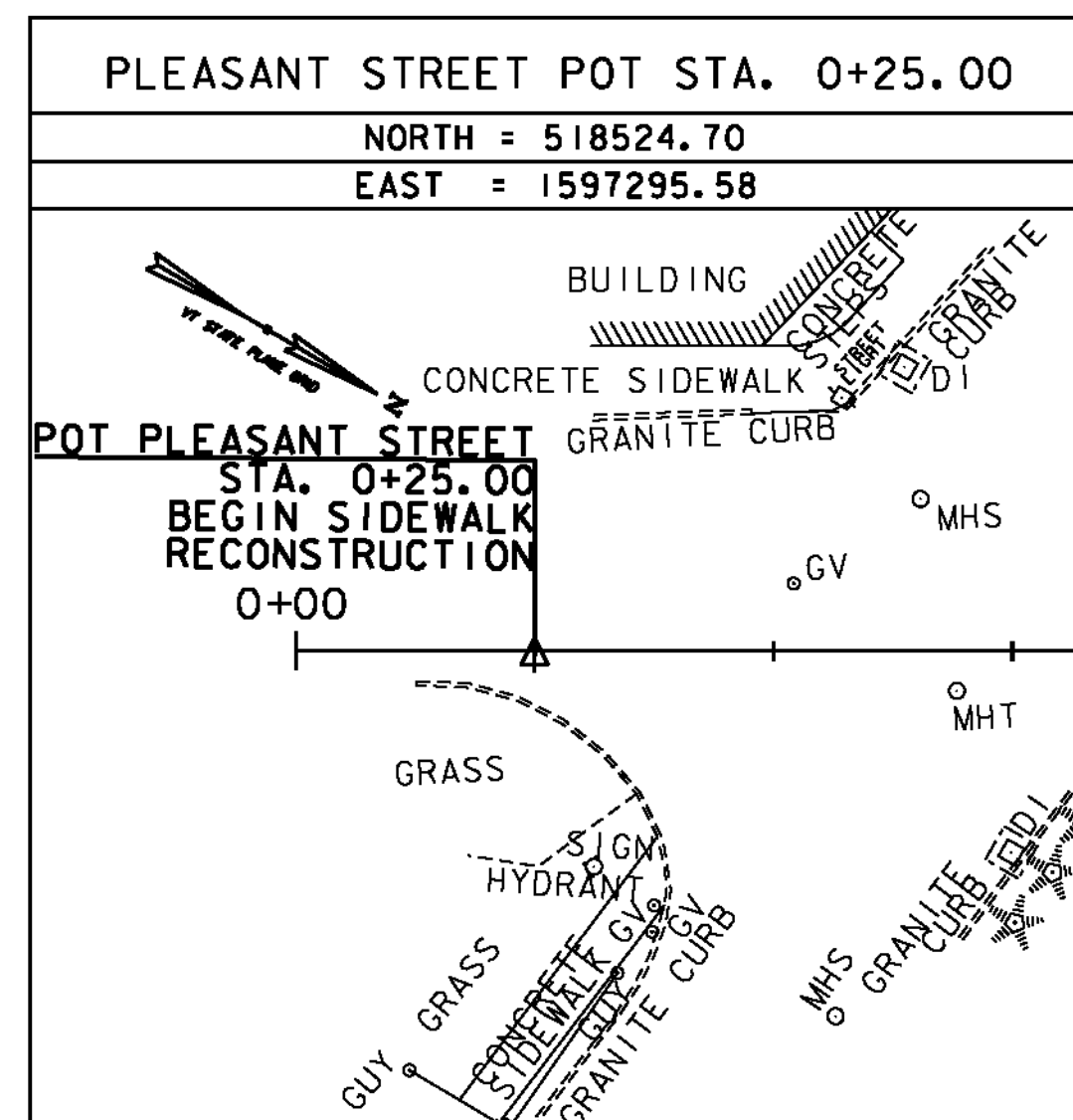
DESCRIPTION PROVIDED BY VERMONT AGENCY OF TRANSPORTATION GEODETIC SURVEY UNIT

TRAVERSE TIES

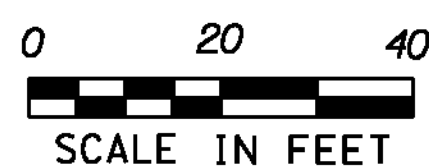


SURVEY COMPLETED: JUNE 22, 2012 BY VSE, M. HUDSON-PC, B. WRIGHT

ALIGNMENT TIES



DATUM	
VERTICAL	NAVD 88(GEOD09) FT
HORIZONTAL	NAD 83(CORS) SFT
ADJUSTMENT	NONE



GREEN INTERNATIONAL AFFILIATES, INC.
CIVIL AND STRUCTURAL ENGINEERS

PROJECT NAME:	STATEWIDE
PROJECT NUMBER:	STP SDWK(II)
FILE NAME:	zif11611_Randolph.dgn
PROJECT LEADER:	E. ATKINS
DESIGNED BY:	T. BIGELOW
RANDOLPH TIE SHEET I	
PLOT DATE:	10/9/2013
DRAWN BY:	S. MUSTO
CHECKED BY:	E. ATKINS
SHEET	30 OF 53

RANDOLPH