

REMOVAL OF EXISTING SIDEWALK (SOLID ROCK EXCAVATION)

PARK STREET 0+25.0 - 2+50.0 LT
 PARK STREET 1+28.2 - 1+49.5 RT

AGGREGATE SHOULDERS

PARK STREET 2+46.1 - 2+50.0 LT

PORTLAND CEMENT CONCRETE SIDEWALK, 5 INCH

PARK STREET 0+25.0 - 1+65.0 LT
 PARK STREET 1+38.6 - 1+49.5 RT
 PARK STREET 1+65.0 - 1+86.1 LT
 PARK STREET 1+86.1 - 2+45.0 LT
 PARK STREET 2+45.0 - 2+50.0 LT

5 INCH SIDEWALK RAMP WITH DETECTABLE WARNING SURFACE

PARK STREET 0+29.0 LT (TYPE I)
 PARK STREET 1+41.1 RT (TYPE I)
 PARK STREET 1+41.6 LT (TYPE I)

DURABLE CROSSWALK MARKING

PARK STREET 1+41.6 RT

REMOVAL OF EXISTING PAVEMENT MARKINGS

PARK STREET 0+82.1 LT - 1+29.0 RT

SEED
 PARK STREET 0+25.0 - 1+71.3 LT
 PARK STREET 0+26.2 - 1+39.1 LT
 PARK STREET 1+44.1 - 1+70.0 LT
 PARK STREET 1+28.2 - 1+45.2 RT
 PARK STREET 1+43.6 - 1+49.5 RT
 PARK STREET 1+80.3 - 2+50.0 LT
 PARK STREET 1+80.3 - 2+50.0 LT

REMOVING SIGNS

PARK STREET - 0+97.1 LT
 PARK STREET - 0+97.1 LT
 PARK STREET - 1+36.6 RT

ERECTING SALVAGED SIGNS

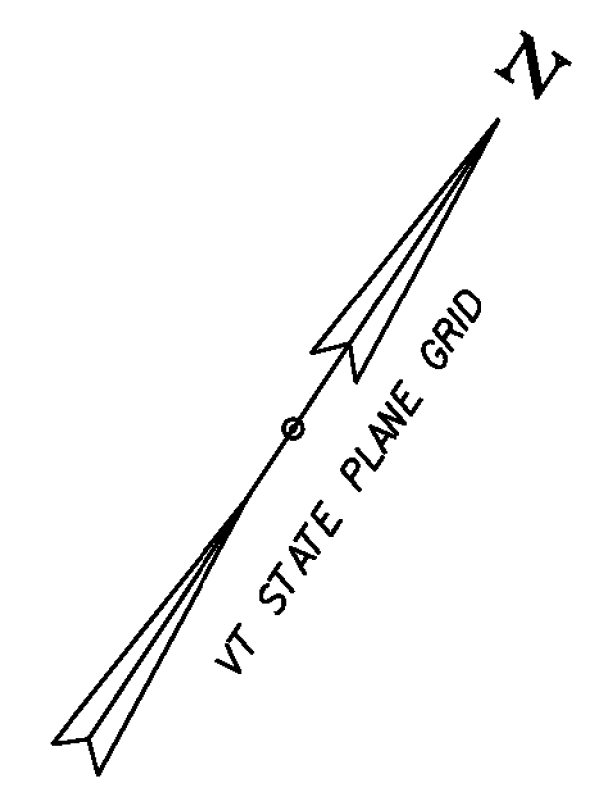
PARK STREET - 1+46.2 LT

SPECIAL PROVISION (INLET PROTECTION, GEOTEXTILE FABRIC)

PARK STREET - 0+33.5 LT
 PARK STREET - 1+33.0 RT

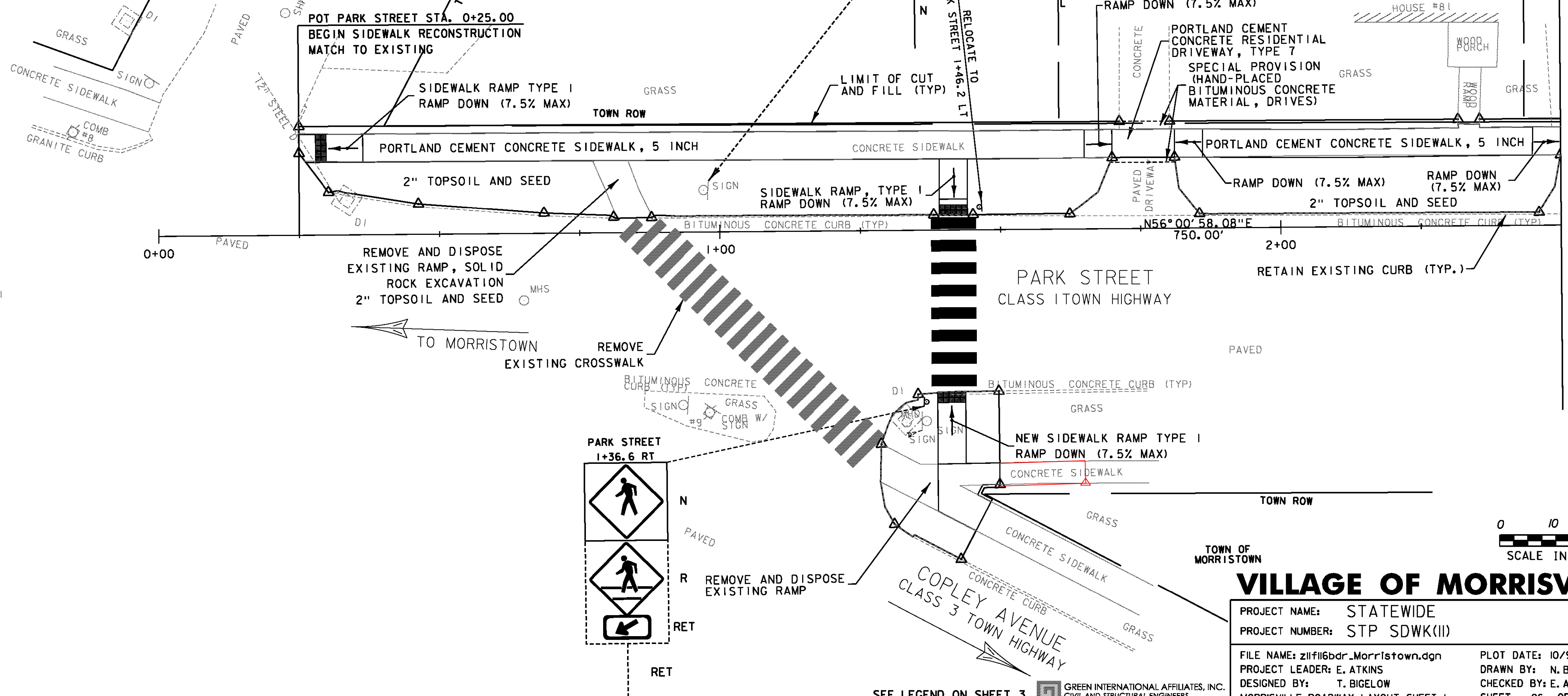
SPECIAL PROVISION (HAND-PLACED BITUMINOUS CONCRETE MATERIAL, DRIVES)

PARK STREET 1+71.3 - 1+80.3 LT

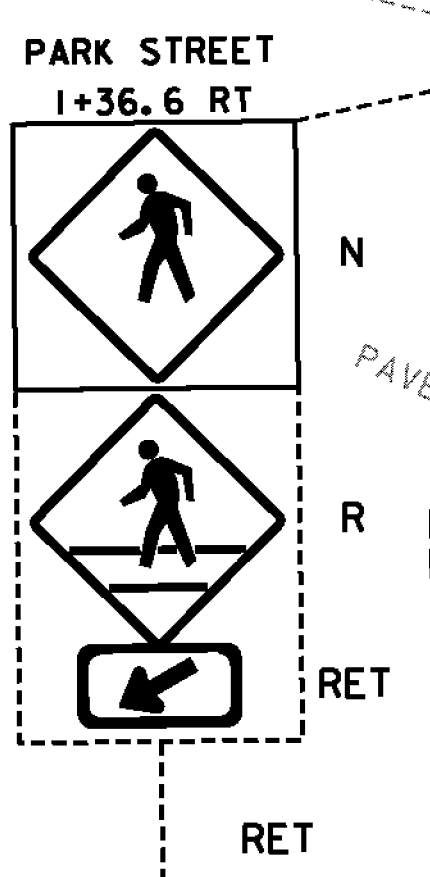


VILLAGE OF MORRISVILLE, VT

SCALE 0 200 400 FEET



MATCHLINE STA. 2+50 MORRISVILLE ROADWAY LAYOUT SHEET 2



SCALE IN FEET
 0 10 20

VILLAGE OF MORRISVILLE

PROJECT NAME: STATEWIDE
 PROJECT NUMBER: STP SDWK(II)
 FILE NAME: zllfii6bdr_MorrisTown.dgn
 PROJECT LEADER: E. ATKINS
 DESIGNED BY: T. BIGELOW
 MORRISVILLE ROADWAY LAYOUT SHEET 1

PLOT DATE: 10/9/2013
 DRAWN BY: N. BOSAN
 CHECKED BY: E. ATKINS
 SHEET 26 OF 53

SEE LEGEND ON SHEET 3 GREEN INTERNATIONAL AFFILIATES, INC. CIVIL AND STRUCTURAL ENGINEERS