

GPS CONTROL POINTS

HARDWICK CORS ARP

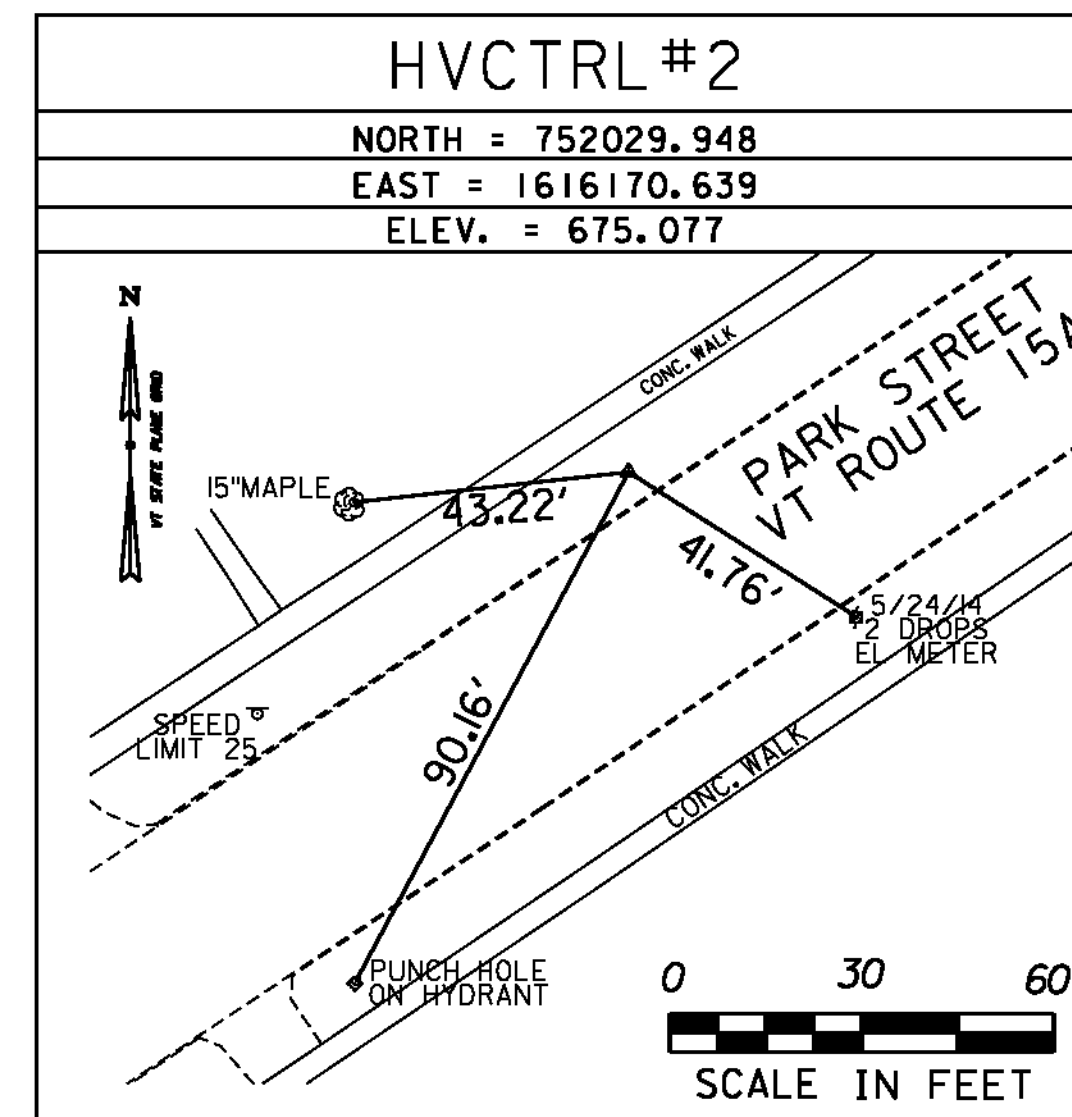
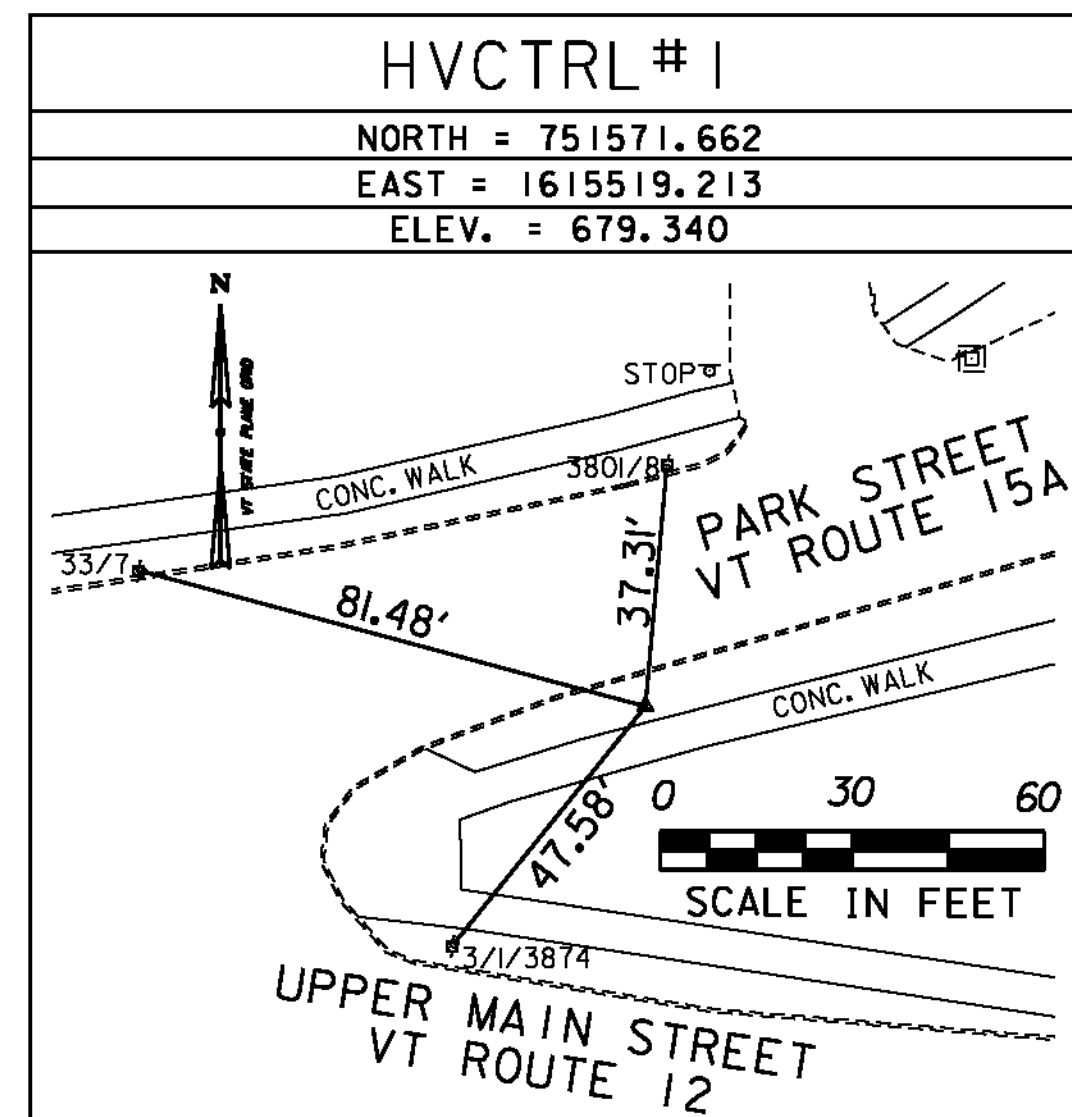
PID DM7840

N = 732128.65
E = 1675405.58
ELLIP HEIGHT = 842.61

STATION IS A GPS CONTINUOUSLY OPERATING REFERENCE STATION. STATION IS THE ANTENNA REFERENCE POINT OF THE GPS ANTENNA. THE ANTENNA IS MOUNTED ON THE ROOF OF HAZEN UNION HIGH SCHOOL, HARDWICK, VT. THE MONUMENT IS ATTACHED TO A TWO STORY CONCRETE/BRICK BUILDING WITH A 8 FT CONCRETE FOUNDATION BUILT IN 1970. MAST IS A 1.75 INCH DIA GALV PIPE THAT IS 108 INCHES LONG. THE MAST ATTACHED TO A STEEL MOUNTING FRAME WITH THREE ATTACHMENTS CONSISTING OF 3/8 INCH SS THROUGH BOLTS. THE MOUNTING FRAME IS ATTACHED TO THE BUILDING USING 6 ATTACHMENT POINTS. ALL 6 ATTACHMENTS ARE THROUGH BOLTED AND CONSIST OF 1/2 INCH SS THREADED ROD AND NUTS.

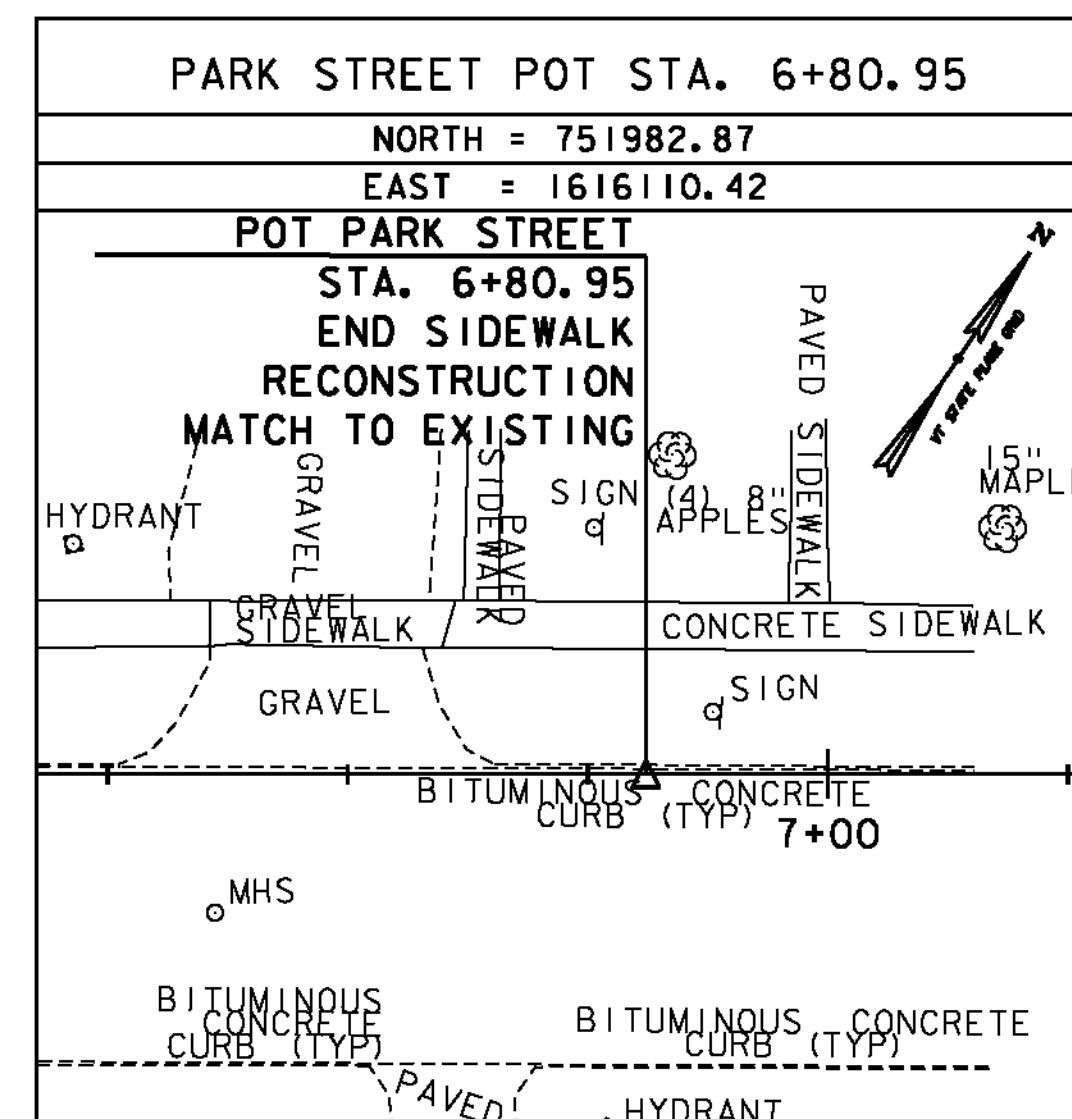
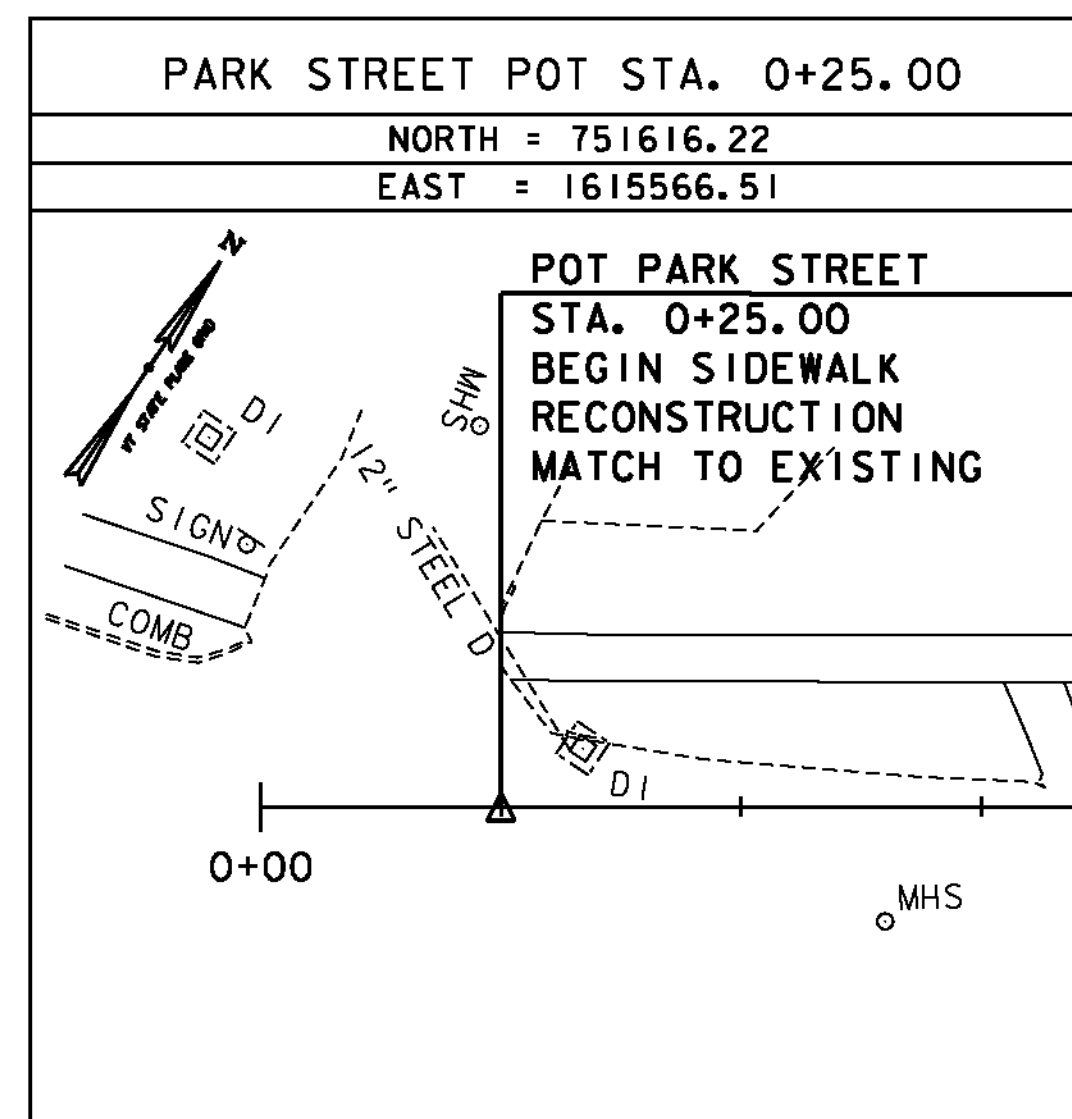
• DESCRIPTION PROVIDED BY VERMONT AGENCY OF TRANSPORTATION GEODETIC SURVEY UNIT

TRAVERSE TIES

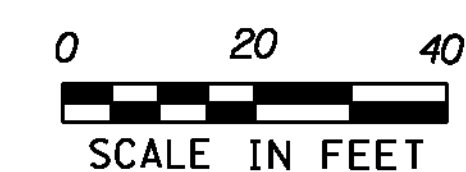


* SURVEY COMPLETED: JUNE 22, 2012 BY VSE, M. HUDSON-PC, B. WRIGHT

ALIGNMENT TIES



DATUM	
VERTICAL	NAVD 88(GEOD09) FT
HORIZONTAL	NAD 83(CORS) SFT
ADJUSTMENT	NONE



GREEN INTERNATIONAL AFFILIATES, INC.
CIVIL AND STRUCTURAL ENGINEERS

VILLAGE OF MORRISVILLE

PROJECT NAME: STATEWIDE
PROJECT NUMBER: STP SDWK(II)

FILE NAME: z11f16+1_Morrisville.dgn	PLOT DATE: 10/9/2013
PROJECT LEADER: E. ATKINS	DRAWN BY: S. MUSTO
DESIGNED BY: T. BIGELOW	CHECKED BY: E. ATKINS
MORRISVILLE TIE SHEET	SHEET 25 OF 53