

GPS CONTROL POINTS

# VERMONT CAPITAL CORS ARP

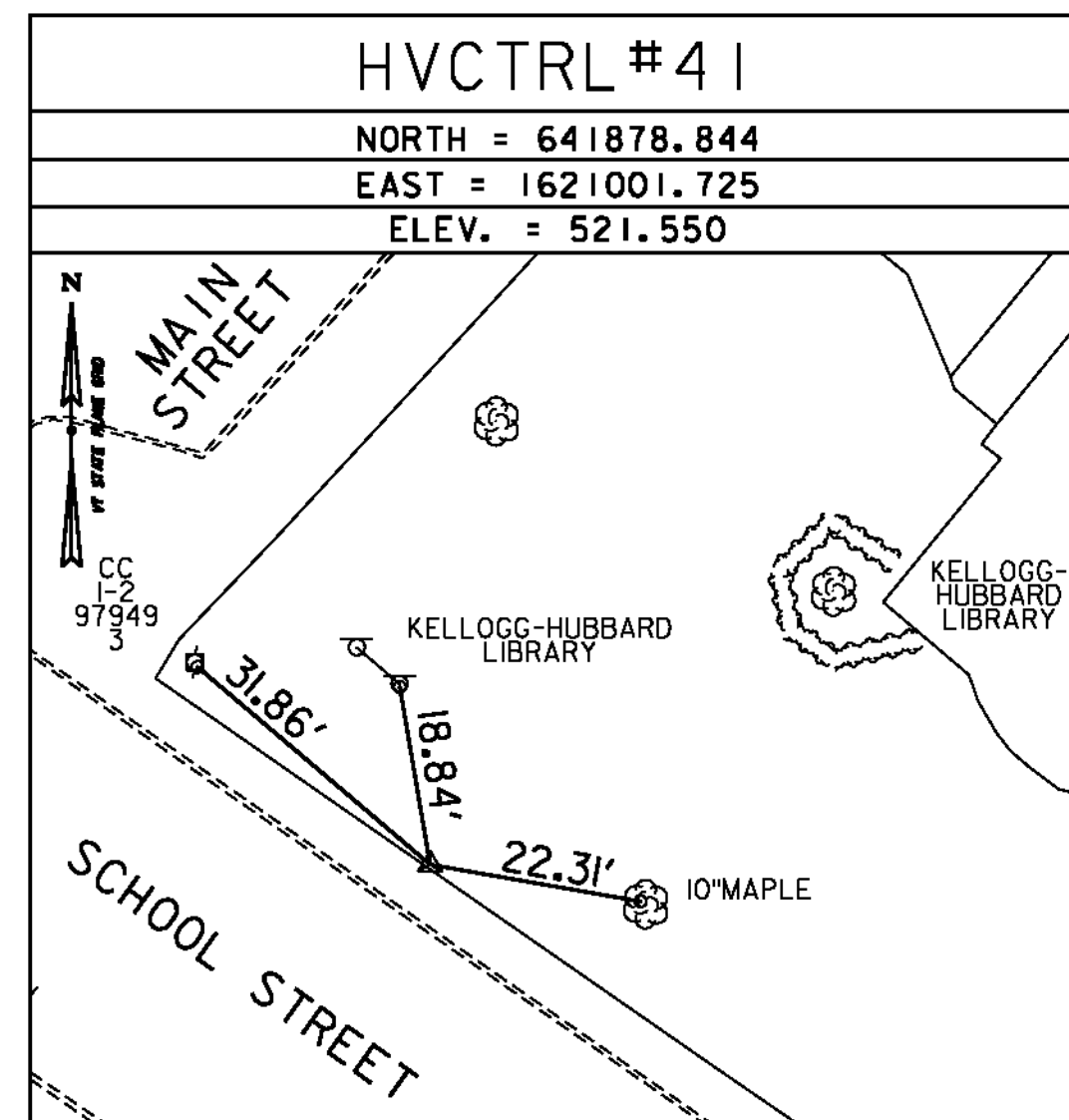
PID AF9563

N = 642229.45  
E = 1618836.21  
ELLIP HEIGHT = 526.64

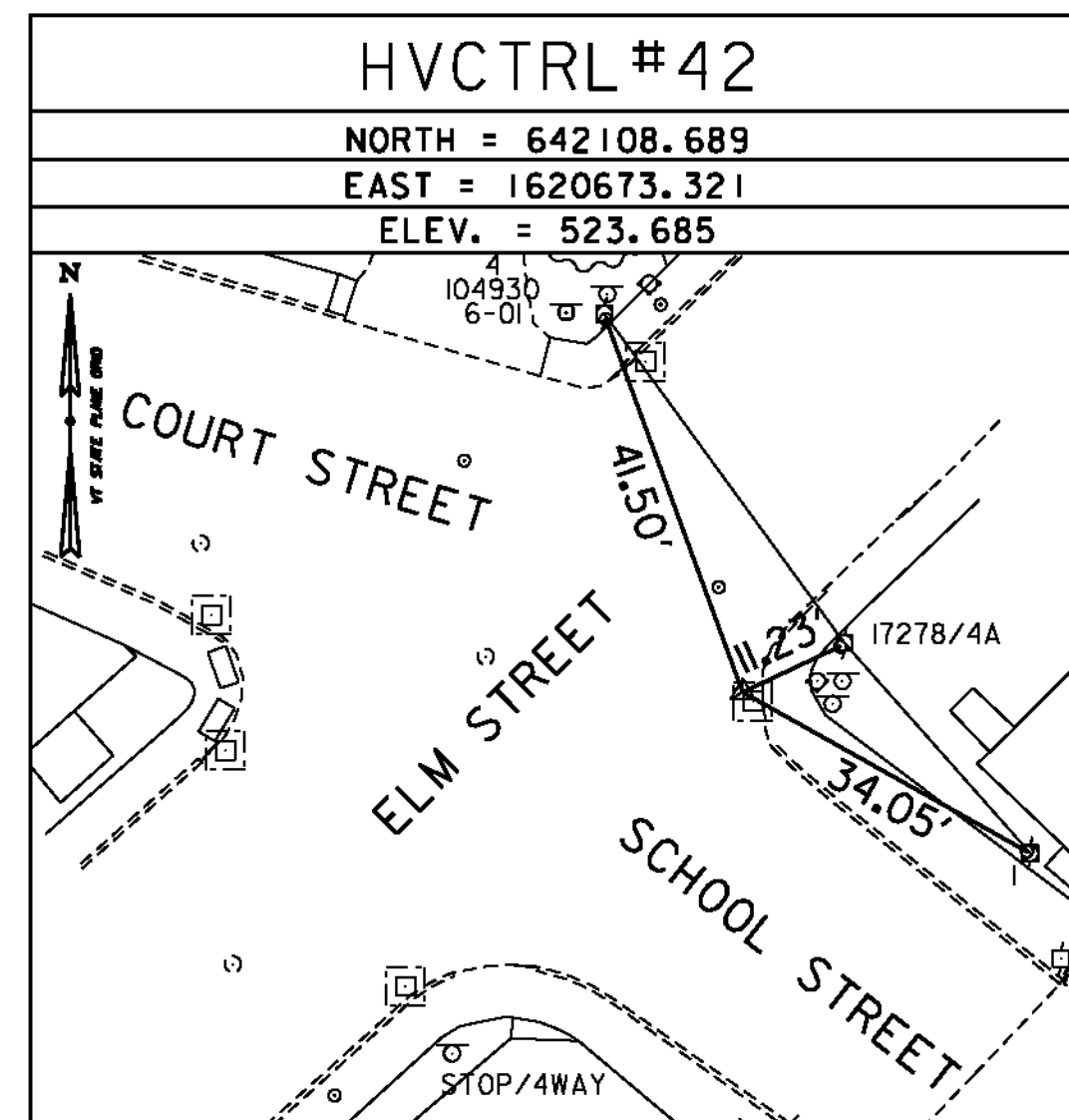
STATION IS A GPS CONTINUOUSLY OPERATING REFERENCE STATION. STATION IS THE ANTENNA REFERENCE POINT OF THE GPS ANTENNA. THE ANTENNA IS MOUNTED ON THE ROOF OF 133 STATE STREET IN MONTPELIER, VERMONT. OWNERSHIP: VERMONT AGENCY OF TRANSPORTATION, 1 NATIONAL LIFE DRIVE, DRAWER 33, MONTPELIER, VT 05633. CONTACT: DANIEL MARTIN.

\* DESCRIPTION PROVIDED BY VERMONT AGENCY OF TRANSPORTATION GEODETIC SURVEY UNIT

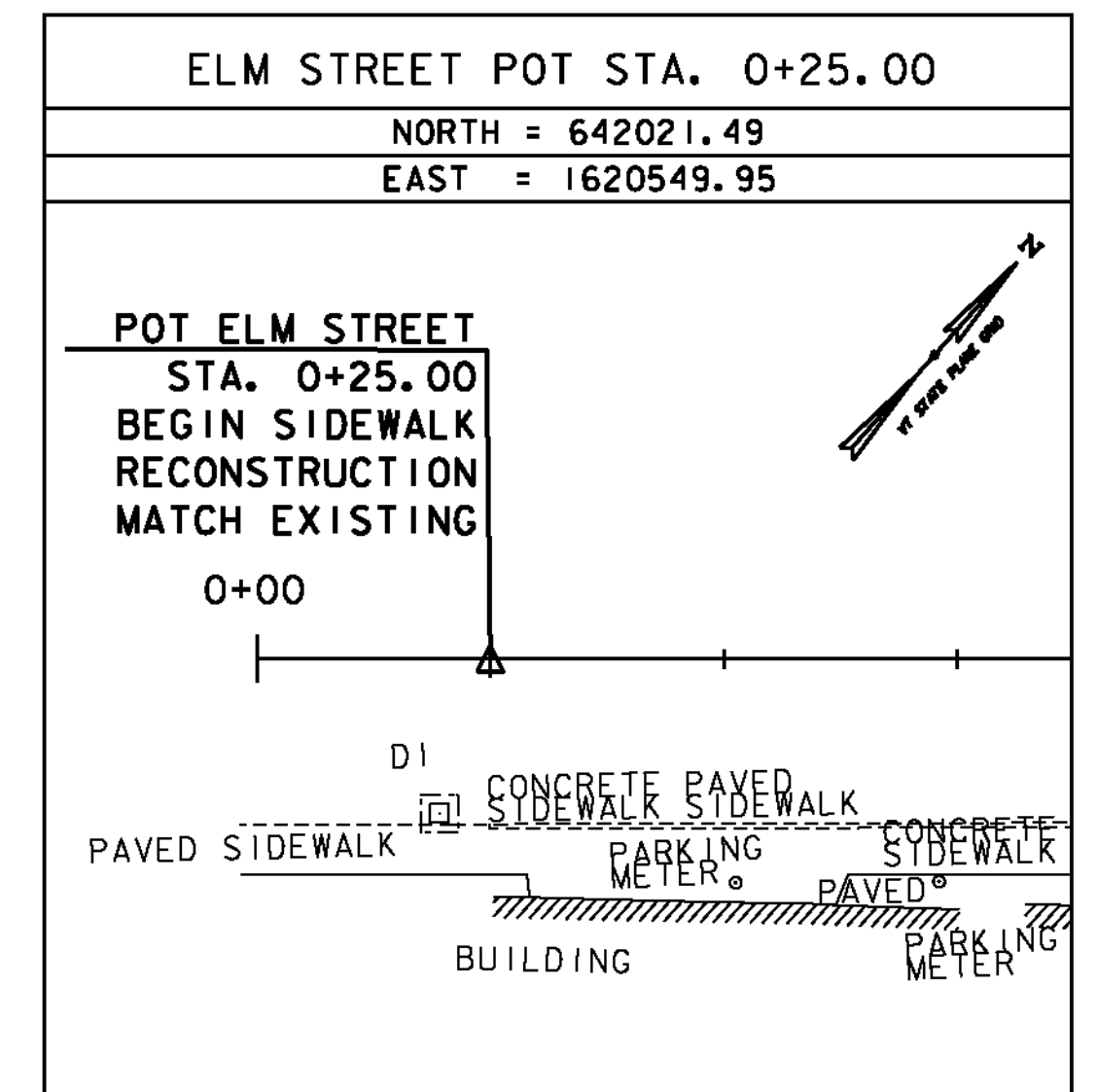
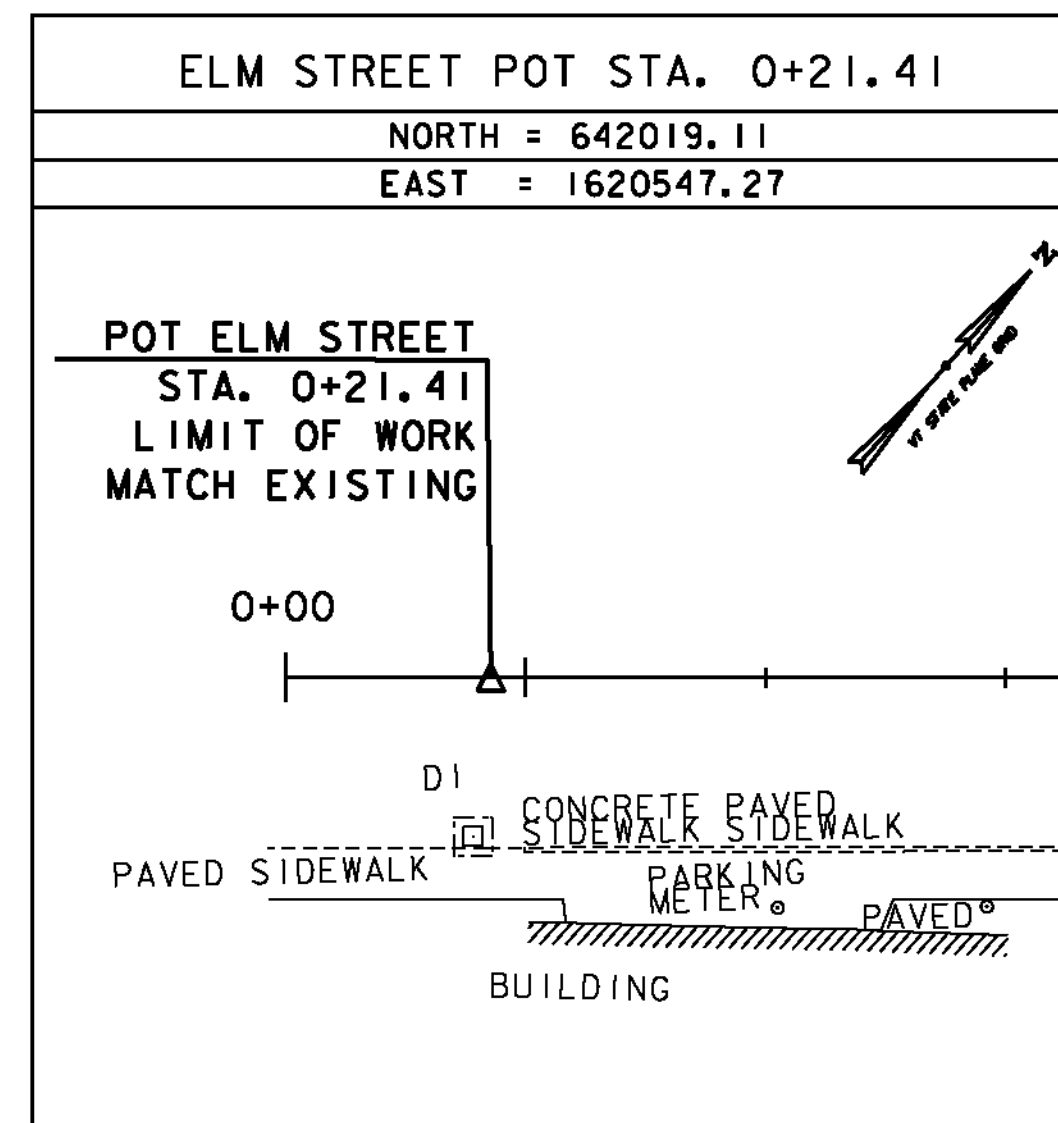
TRAVERSE TIES



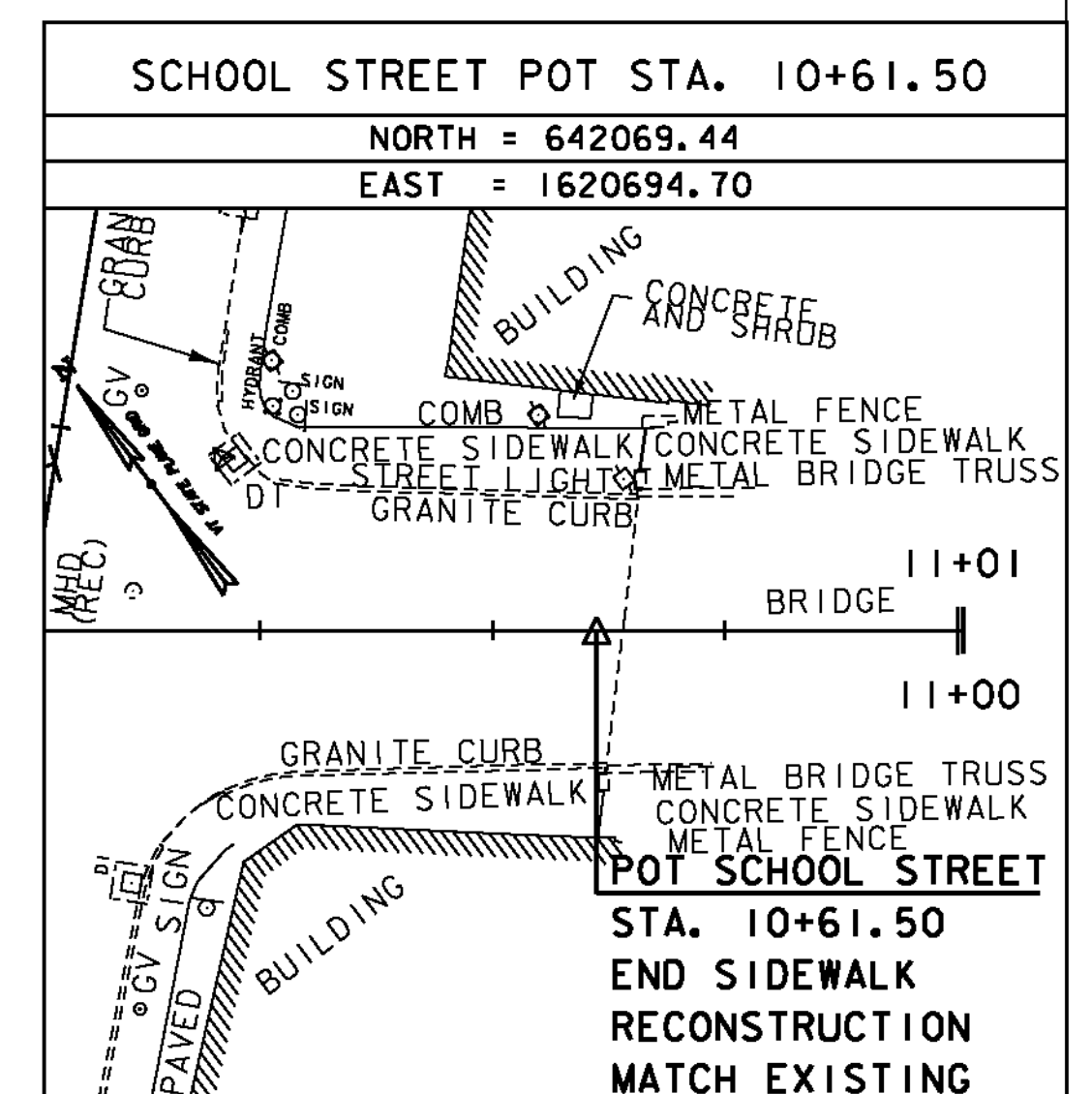
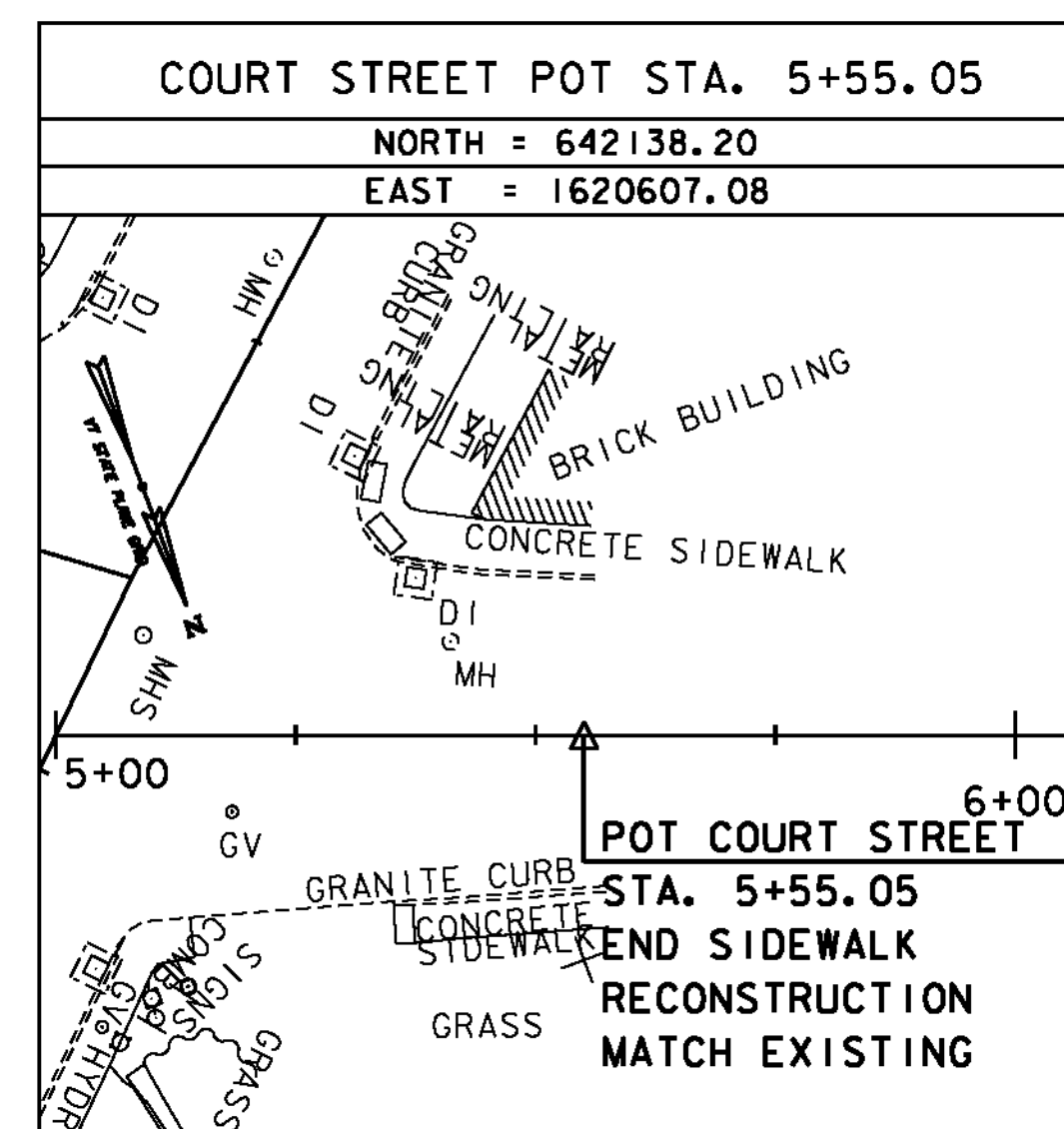
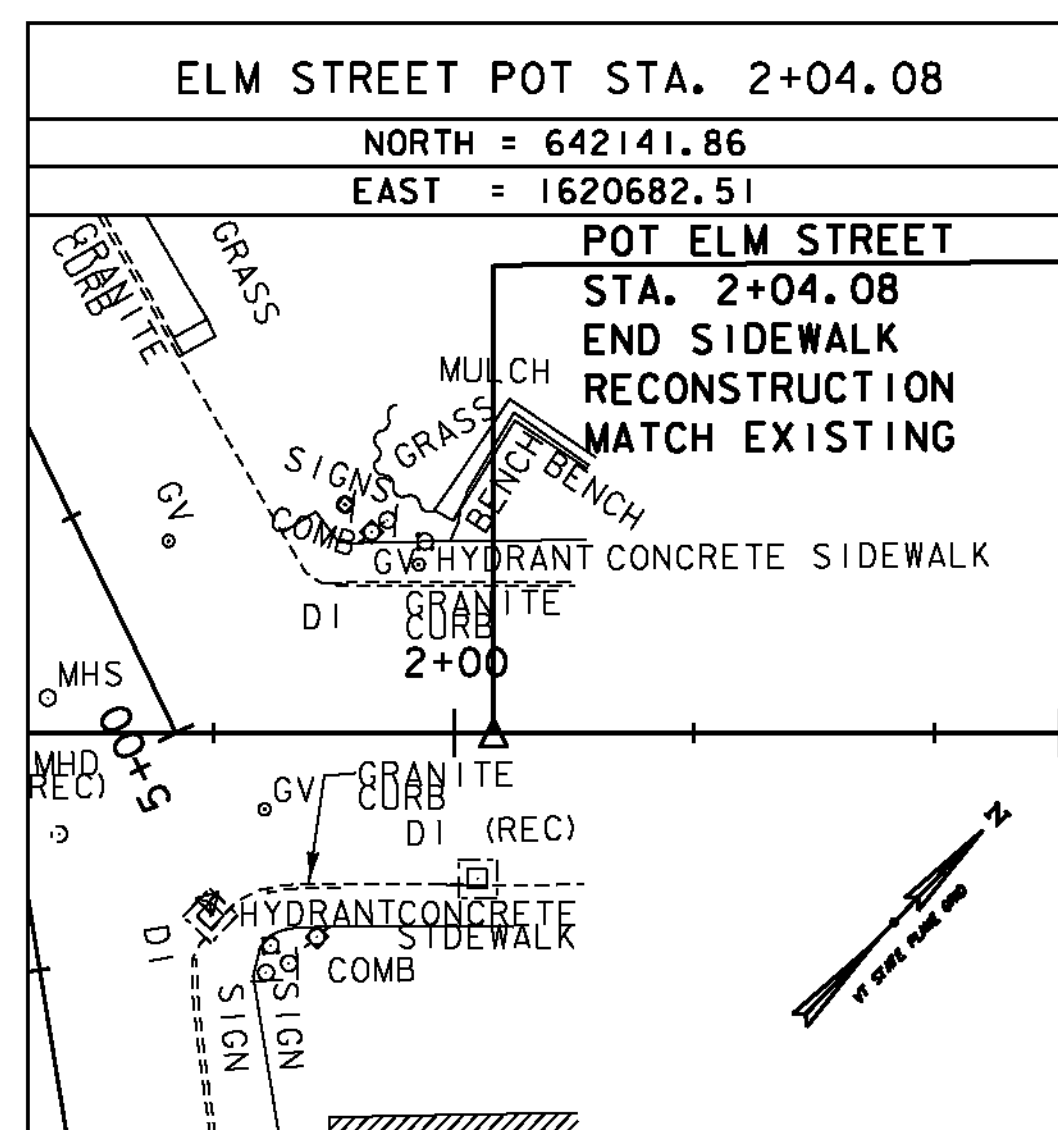
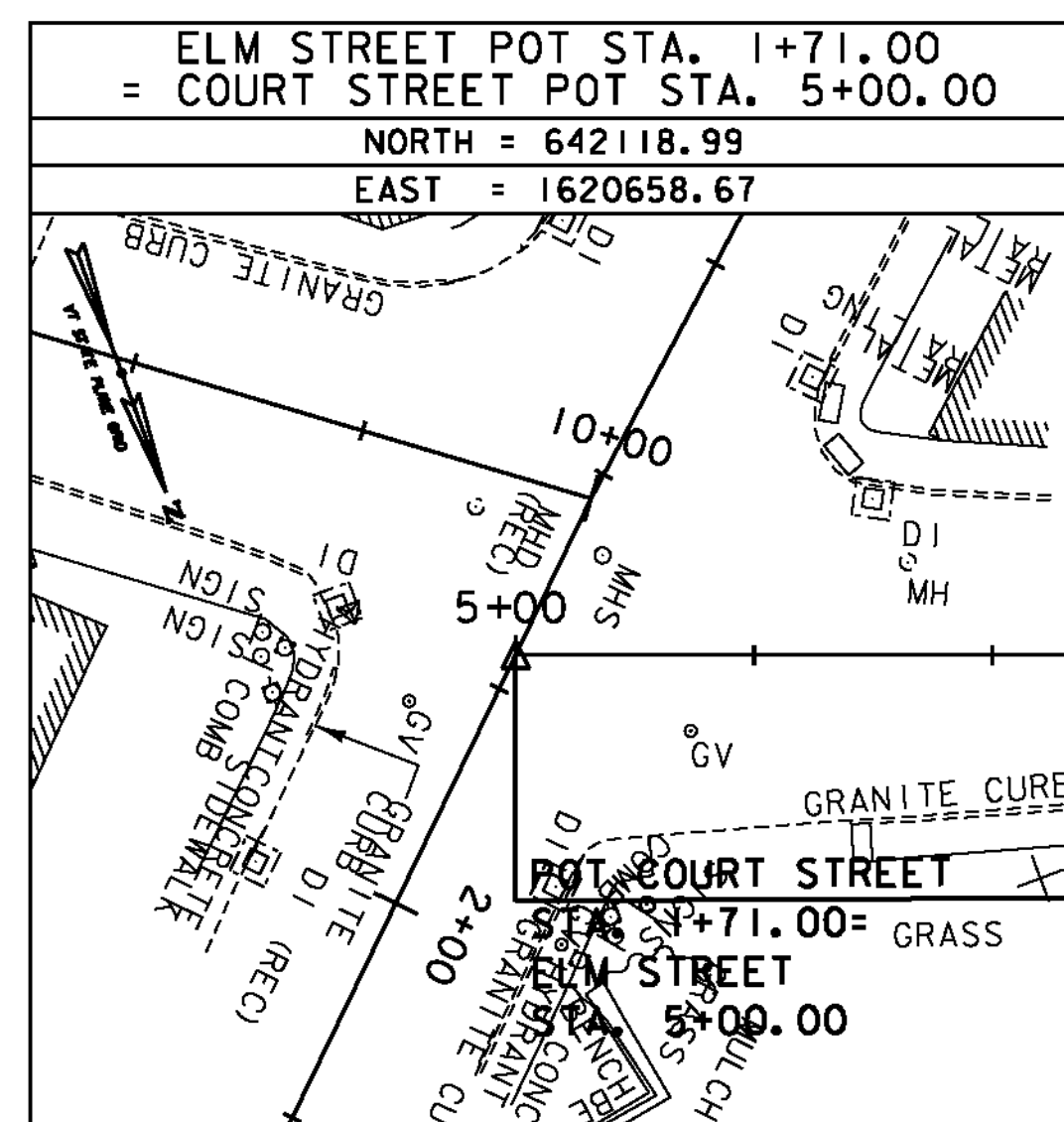
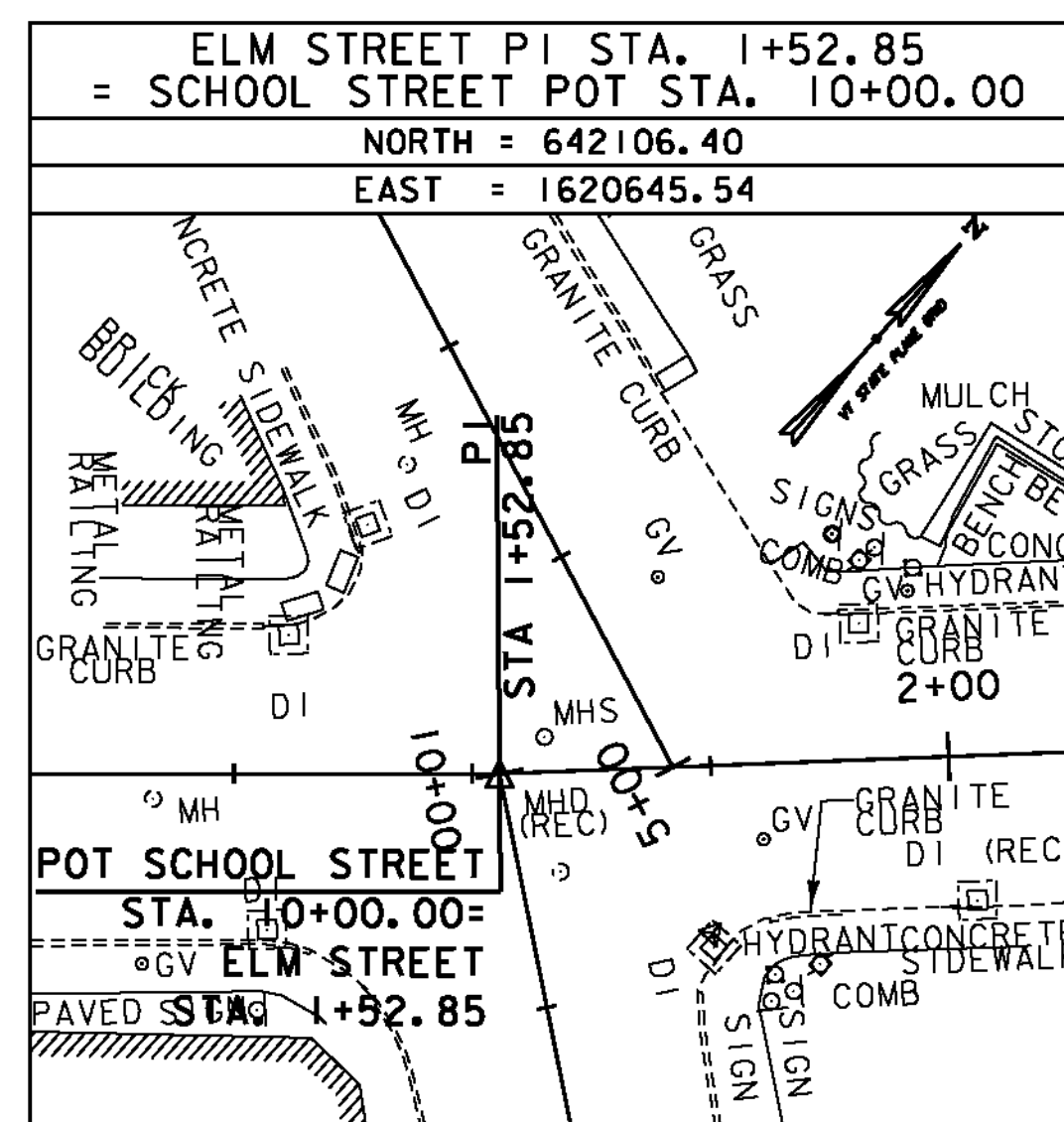
\* SURVEY COMPLETED: JUNE 20, 2012 BY VSE, M. HUDSON-PC, B. WRIGHT



ALIGNMENT TIES

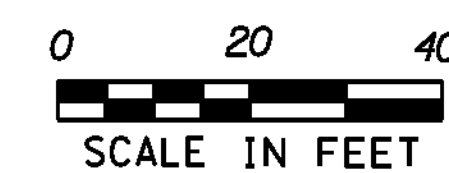


ALIGNMENT TIES



## MONTPELIER

DATUM	
VERTICAL	NAVD 88(GEIOD09) FT
HORIZONTAL	NAD 83(CORS) SFT
ADJUSTMENT	NONE



GREEN INTERNATIONAL AFFILIATES, INC.  
CIVIL AND STRUCTURAL ENGINEERS

PROJECT NAME:	STATEWIDE	PLOT DATE:	10/9/2013
PROJECT NUMBER:	STP SDWK(II)	PROJECT LEADER:	E. ATKINS
FILE NAME:	z11f16t1_Montpelier.dgn	DESIGNED BY:	T. BIGELOW
		CHECKED BY:	E. ATKINS
		MONTPELIER TIE SHEET	SHEET 22 OF 53