

GPS CONTROL POINTS

UVM COOLIDGE CORS ARP

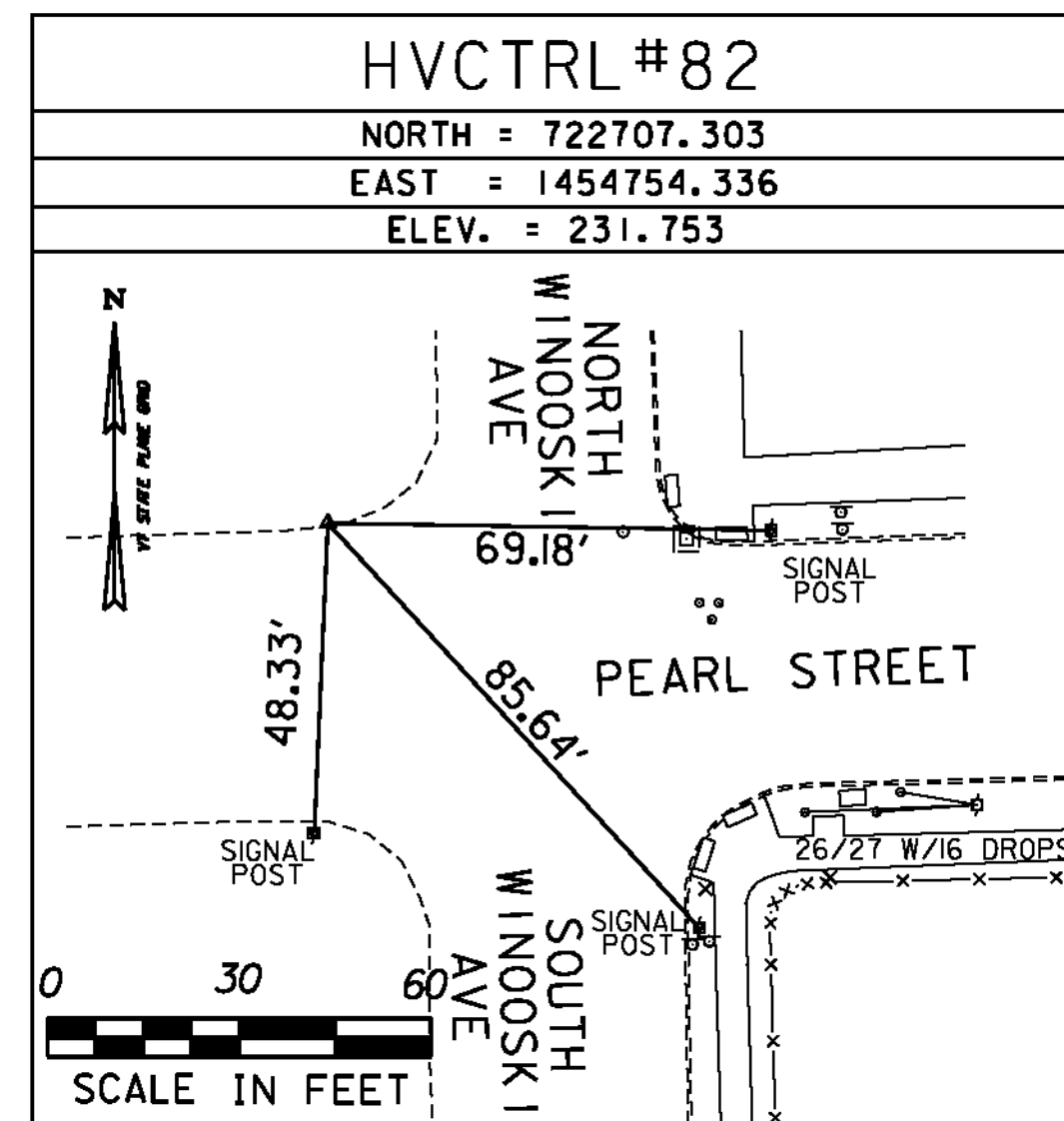
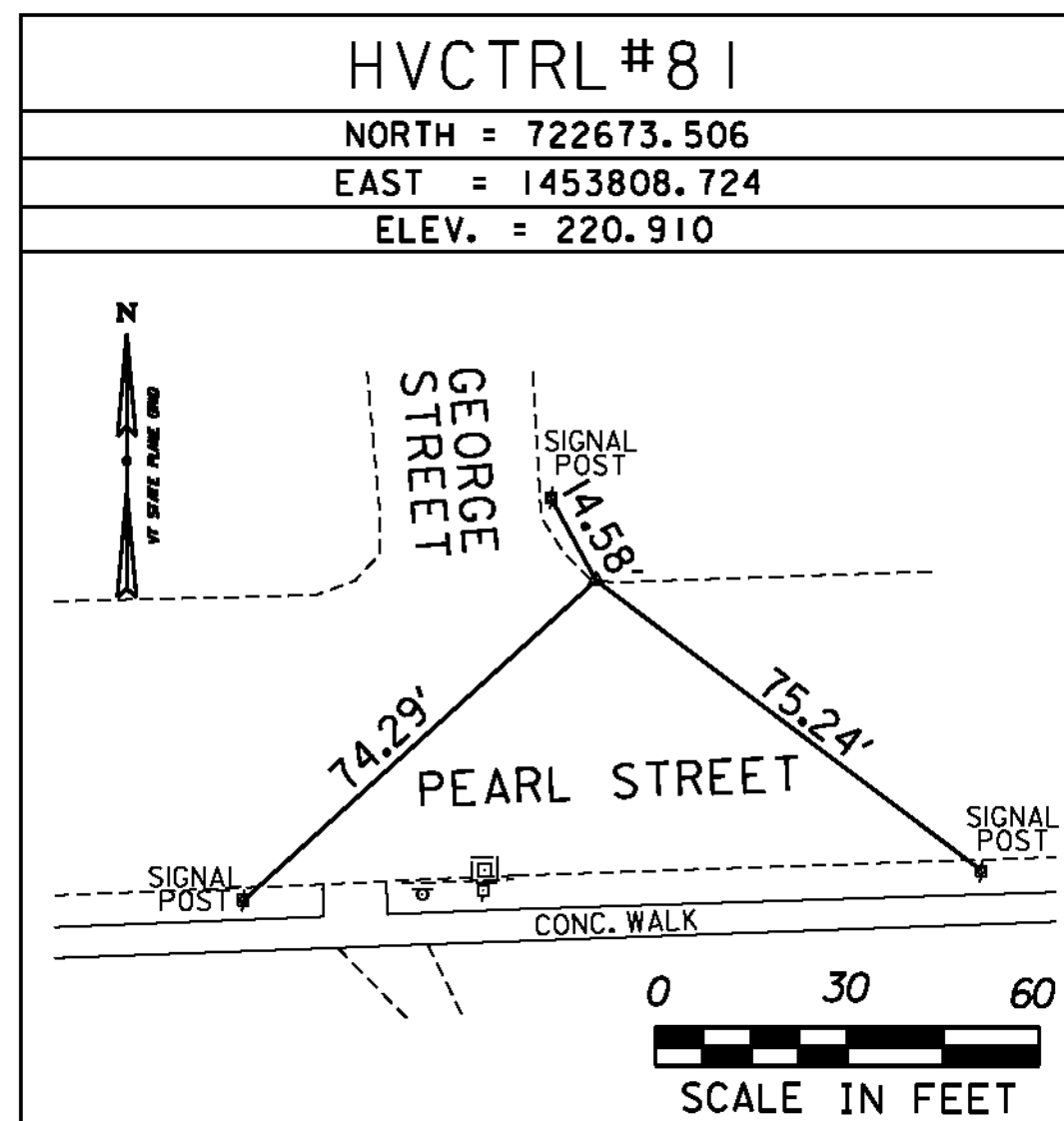
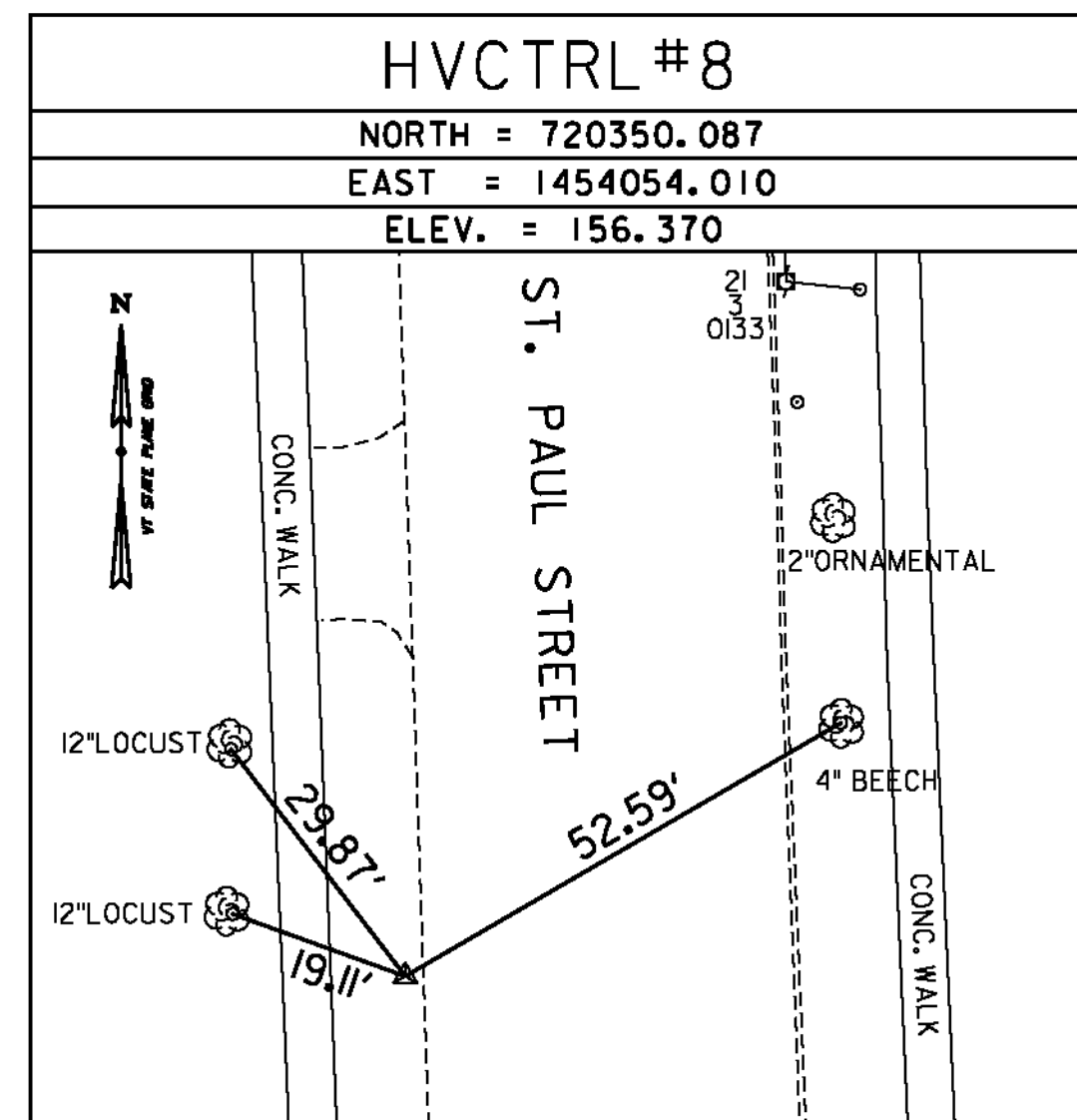
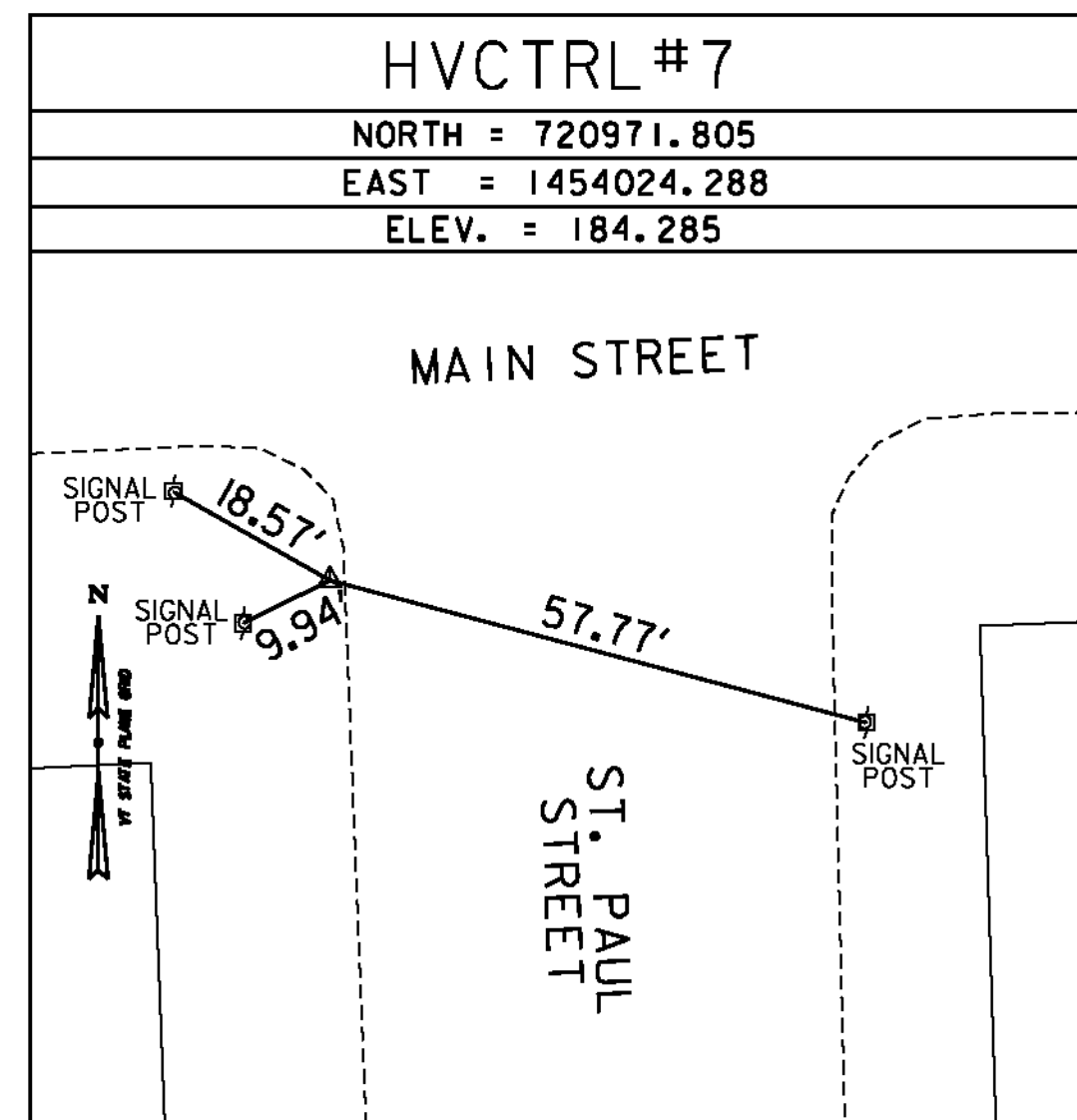
PID DG9783

N = 718549.76
E = 1458233.61
ELLIP HEIGHT = 368.82

STATION IS A GPS CONTINUOUSLY OPERATING REFERENCE STATION. STATION IS THE ANTENNA REFERENCE POINT OF THE GPS ANTENNA. THE ANTENNA IS MOUNTED ON THE ROOF OF COOLIDGE HALL, ON THE REDSTONE CAMPUS OF THE UNIVERSITY OF VERMONT, BURLINGTON, VT.

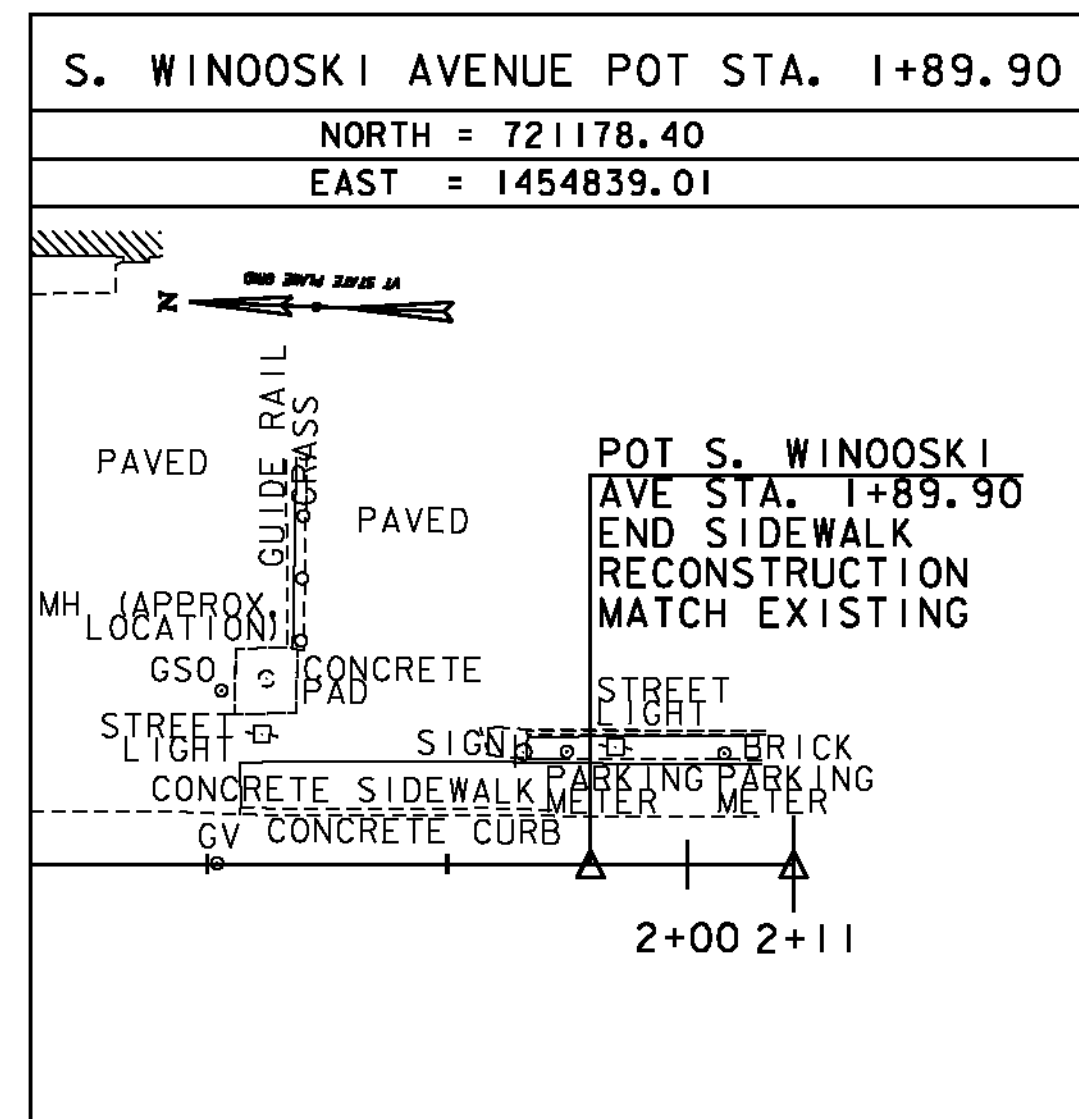
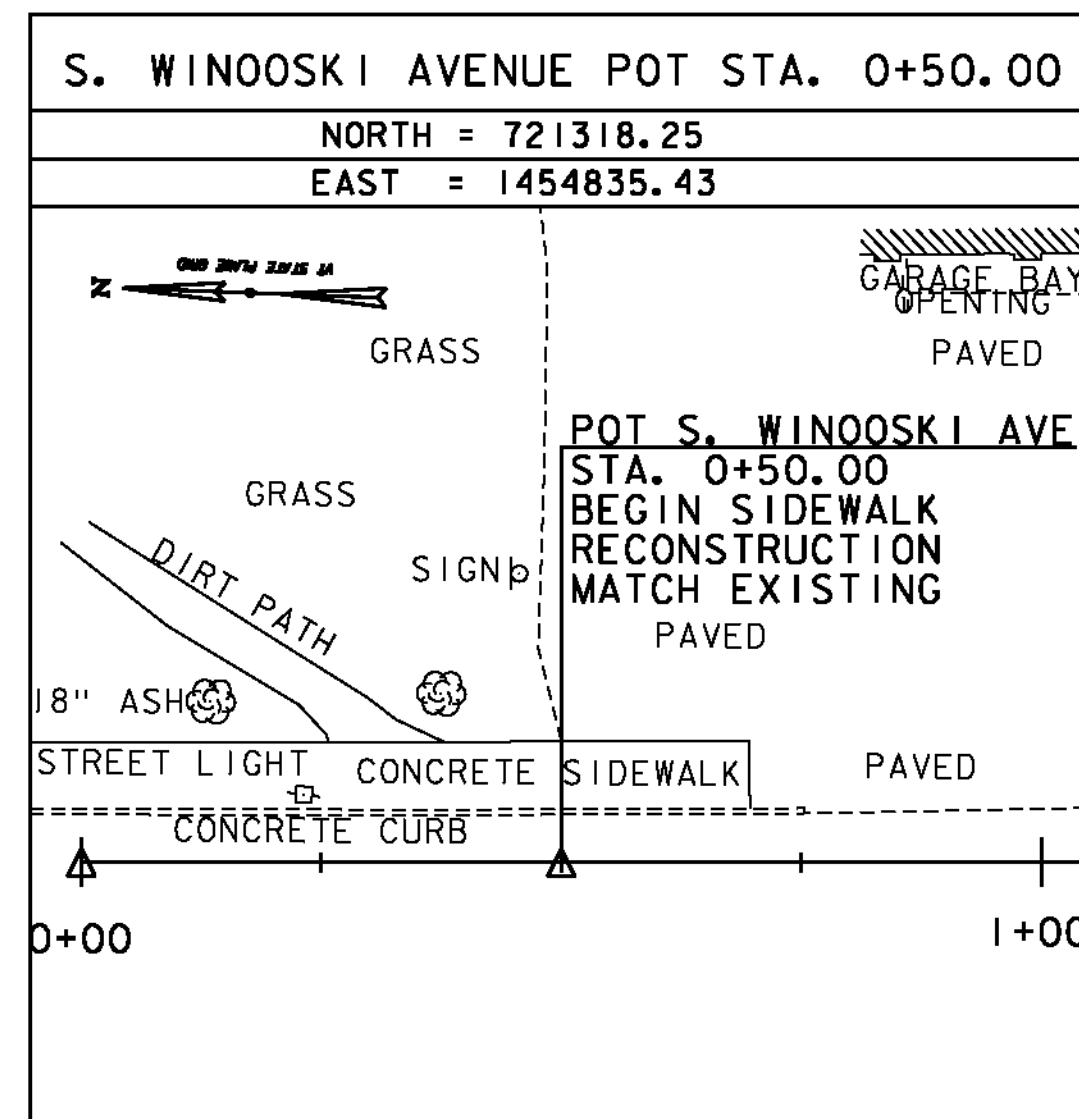
• DESCRIPTION PROVIDED BY VERMONT AGENCY OF TRANSPORTATION GEODETIC SURVEY UNIT

TRAVERSE TIES

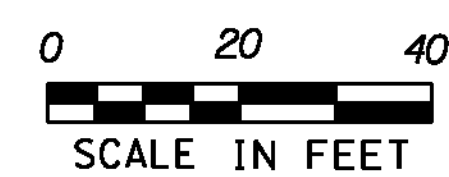


* SURVEY COMPLETED: JUNE 26, 2012 BY VSE, M. HUDSON-PC, B. WRIGHT

ALIGNMENT TIES



DATUM	
VERTICAL	NAVD 88(GEOID09) FT
HORIZONTAL	NAD 83(CORS) SFT
ADJUSTMENT	NONE



GREEN INTERNATIONAL AFFILIATES, INC.
CIVIL AND STRUCTURAL ENGINEERS

BURLINGTON

PROJECT NAME: STATEWIDE
PROJECT NUMBER: STP SDWK(II)

FILE NAME: z11f16t1_Burlington.dgn
PROJECT LEADER: E. ATKINS
DESIGNED BY: T. BIGELOW
BURLINGTON TIE SHEET

PLOT DATE: 10/9/2013
DRAWN BY: S. MUSTO
CHECKED BY: E. ATKINS
SHEET 15 OF 53