

GPS CONTROL POINTS

MIDDLEBURY CORS ARP

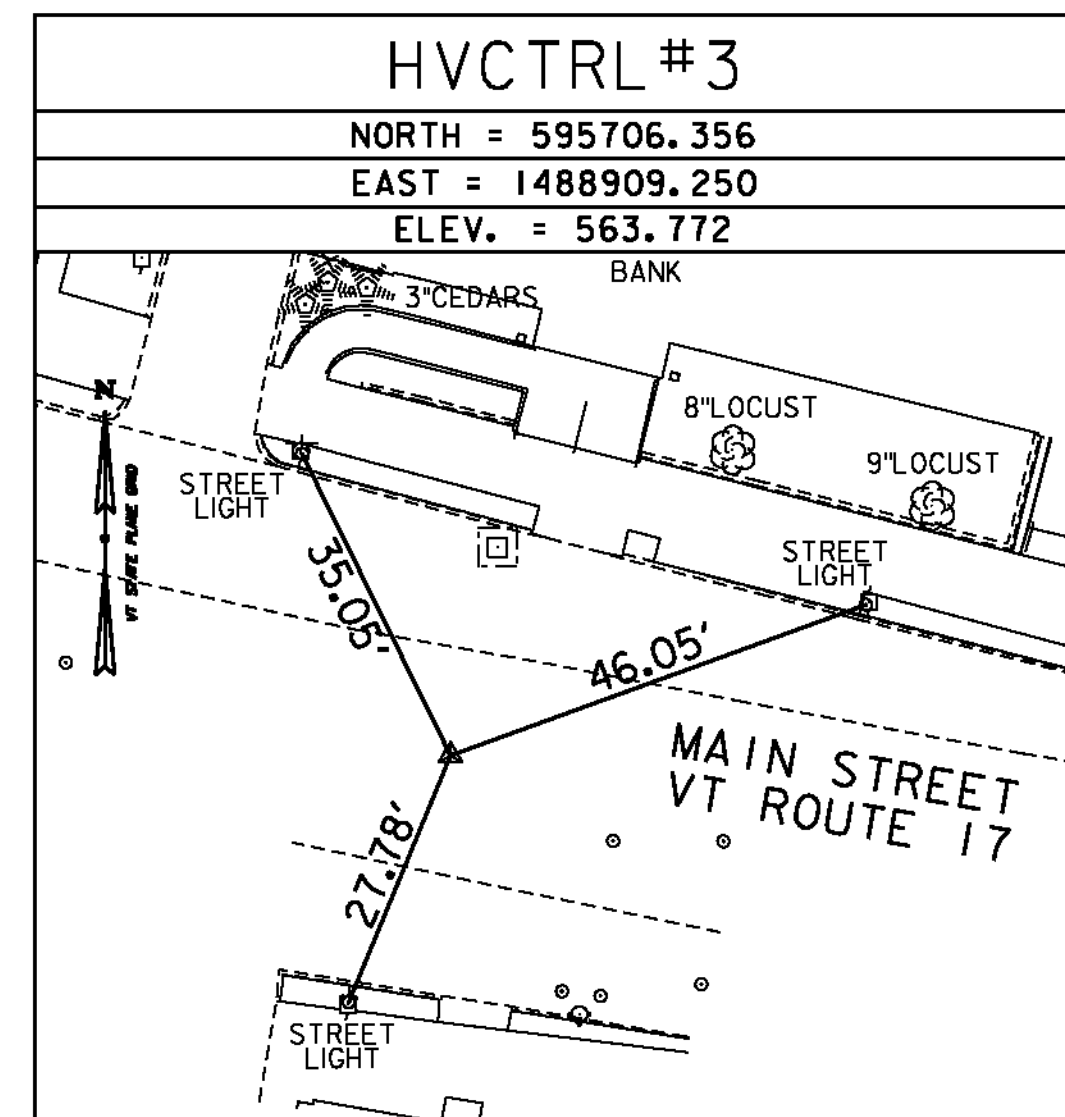
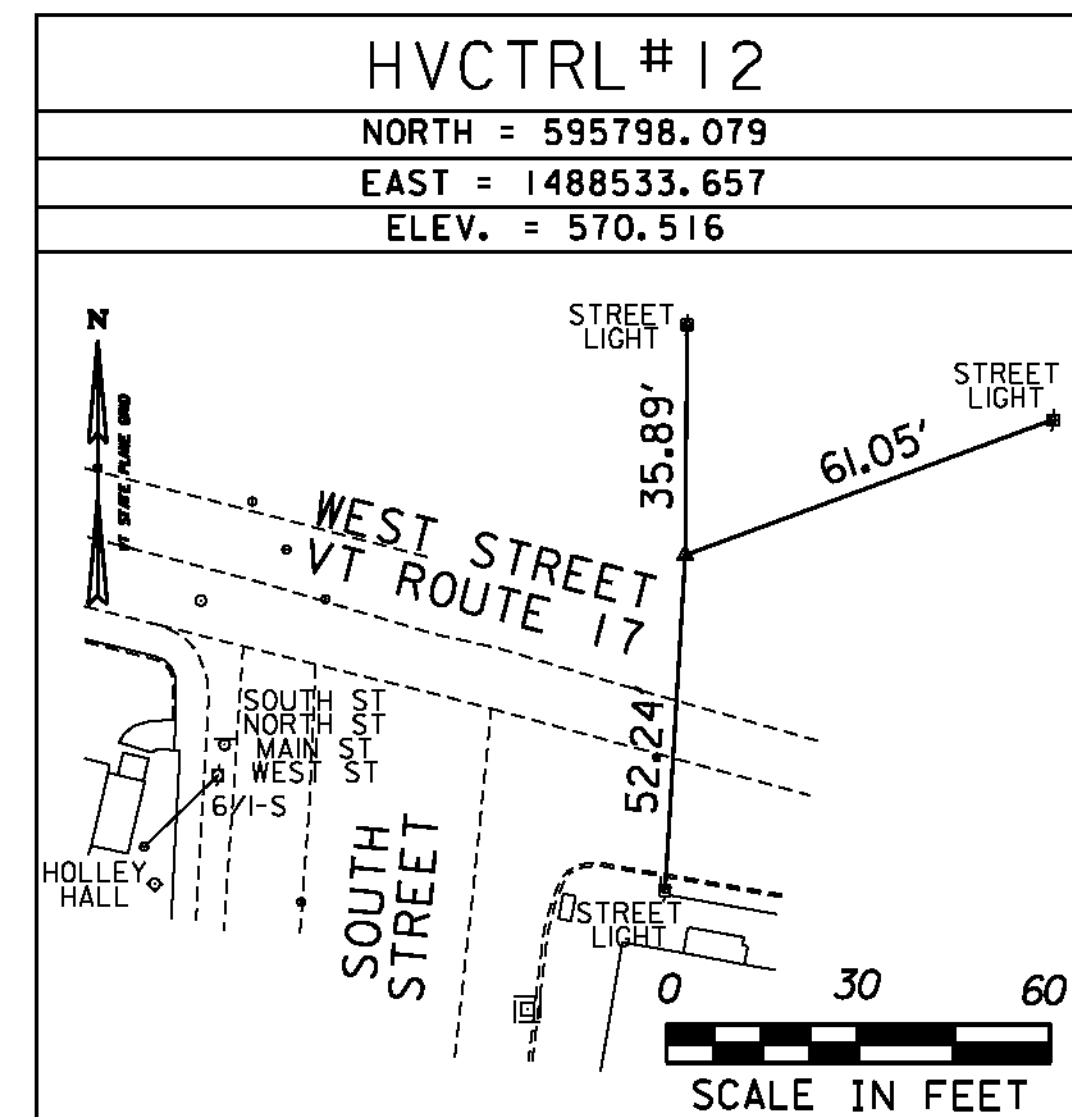
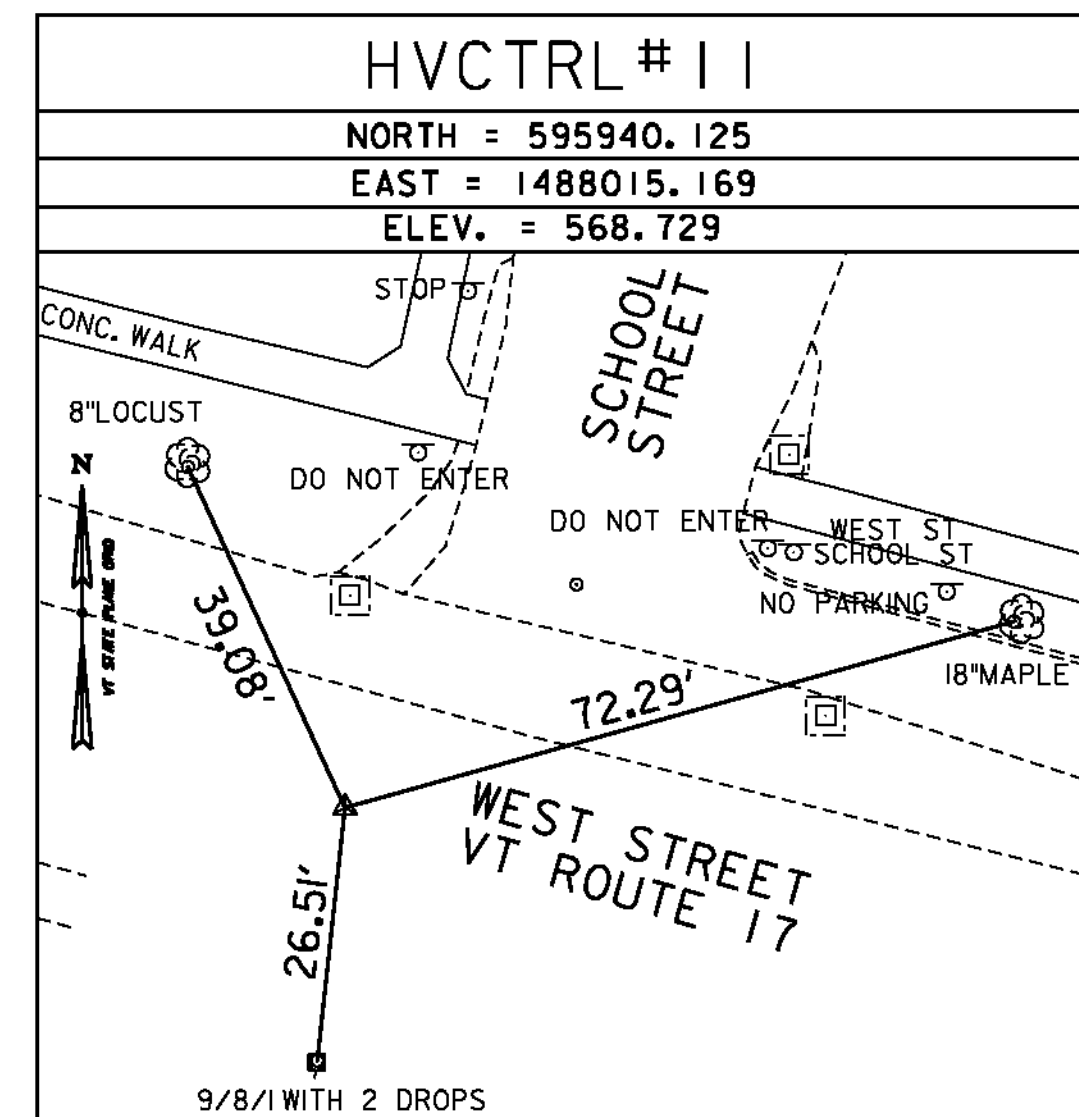
PID DL2744

N = 546895.26
E = 1468689.89
ELLIP HEIGHT = 315.07

STATION IS A GPS CONTINUOUSLY OPERATING REFERENCE STATION. STATION IS THE ANTENNA REFERENCE POINT OF THE GPS ANTENNA. THE ANTENNA IS MOUNTED ON THE ROOF OF MIDDLEBURY UNION MIDDLE SCHOOL, MIDDLEBURY, VT. THE MONUMENT IS ATTACHED TO A 3 STORY CONCRETE/BRICK BUILDING WITH A 10 FT CONCRETE FOUNDATION BUILT IN 1996. MAST IS A TWO INCH DIA GALV PIPE THAT IS 120 INCHES LONG AND HAS A SMALL CIRCULAR LEVELING DEVICE WELDED TO THE TOP. THE MAST IS WELDED TO 3 OUTRIGGERS AND MOUNTING PLATES ARE WELDED TO THE END OF EACH OUTRIGGER. EACH MOUNTING PLATE CONTAINS 4 ATTACHMENT POINTS CONSISTING OF 1/2 INCH DIA HOLES. ATTACHMENTS ARE EITHER MADE BY THROUGH BOLTING WITH WITH 1/2 INCH STAINLESS STEEL ROD, WASHERS, AND NUTS OR 1/2 INCH STAINLESS STEEL LAGS WITH LEAD ANCHORS. THE TOP PLATE IS SECURED WITH ONE THROUGH BOLT AND 3 ANCHORS. THE MIDDLE PLATE IS SECURED WITH 2 THROUGH BOLTS AND 2 ANCHORS. THE BOTTOM PLATE IS SECURED WITH 2 THROUGH BOLTS AND 2 ANCHORS.

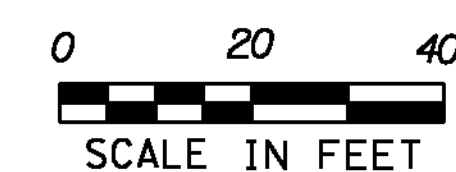
• DESCRIPTION PROVIDED BY VERMONT AGENCY OF TRANSPORTATION GEODETIC SURVEY UNIT

TRAVERSE TIES



* SURVEY COMPLETED: MAY 30, 2012 BY VSE, M. HUDSON-PC, B. WRIGHT

DATUM	
VERTICAL	NAVD 88(GEOD09) FT
HORIZONTAL	NAD 83(CORS) SFT
ADJUSTMENT	NONE



GREEN INTERNATIONAL AFFILIATES, INC.
CIVIL AND STRUCTURAL ENGINEERS

BRISTOL

PROJECT NAME: STATEWIDE
PROJECT NUMBER: STP SDWK(II)

FILE NAME: z11f16t1_Bristol.dgn	PLOT DATE: 10/9/2013
PROJECT LEADER: E. ATKINS	DRAWN BY: S. MUSTO
DESIGNED BY: T. BIGELOW	CHECKED BY: E. ATKINS
BRISTOL TIE SHEET	SHEET 12 OF 53