

**REMOVAL OF EXISTING SIDEWALK
(SOLID ROCK EXCAVATION)**

US RTE 5 3+00.0 - 3+44.9 RT
US RTE 5 5+37.6 - 5+59.1 RT

VERTICAL GRANITE CURB

US RTE 5 3+00.0 - 3+44.9 RT
US RTE 5 5+37.6 - 5+59.1 RT

REMOVAL OF EXISTING CURB

US RTE 5 3+00.0 - 3+44.9 RT
US RTE 5 5+37.5 - 5+59.1 RT

PORTLAND CEMENT CONCRETE SIDEWALK, 5 INCH

US RTE 5 3+00.0 - 3+44.9 RT
US RTE 5 5+37.6 - 5+59.1 RT

**5 INCH SIDEWALK RAMPS WITH
DETECTABLE WARNING SURFACE**

US RTE 5 5+59.1 RT (TYPE II)

DURABLE 4 INCH WHITE LINE

US RTE 5 3+00.0 - 5+38.5 (PARKING)

REMOVAL OF EXISTING PAVEMENT MARKINGS

US RTE 5 3+00.0 - 5+38.5 RT/LT

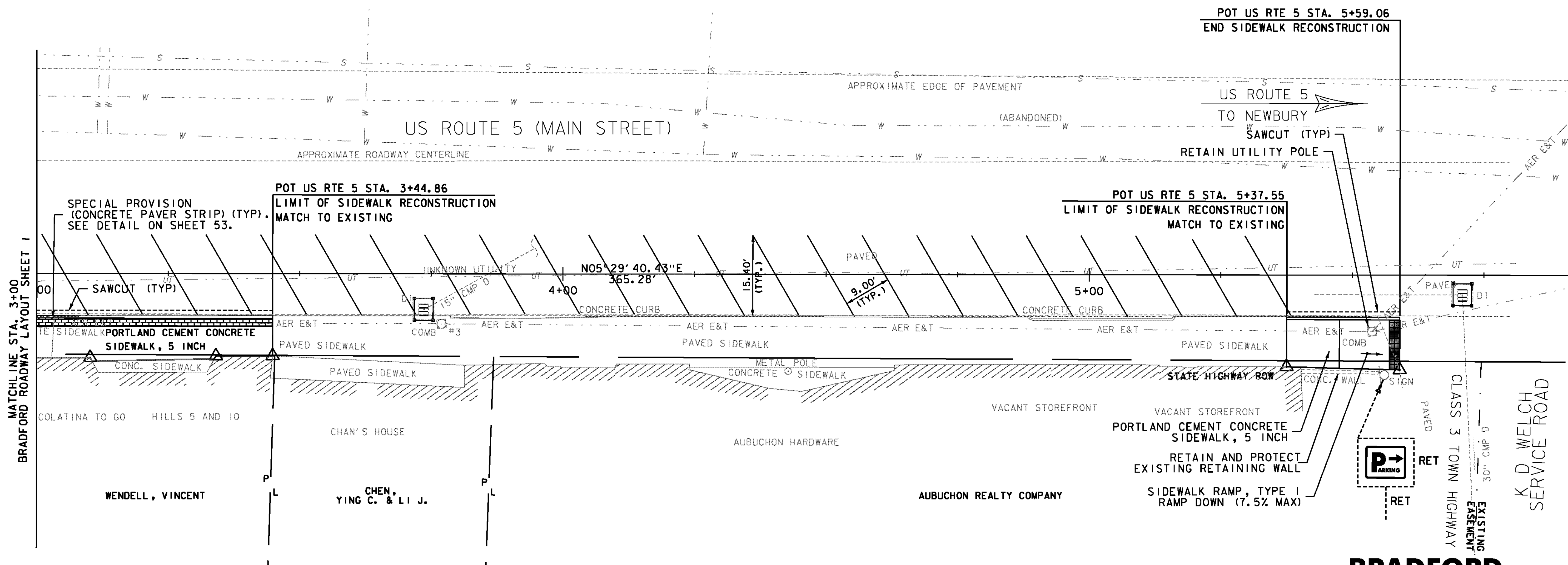
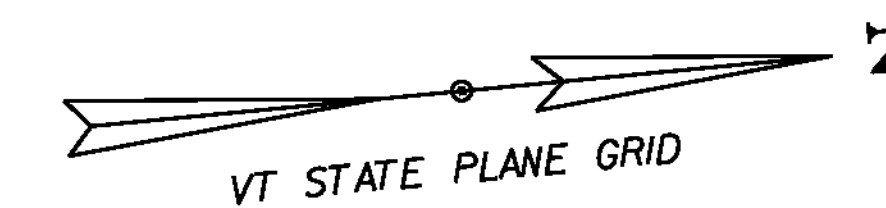
**SPECIAL PROVISION (INLET PROTECTION,
GEOTEXTILE FABRIC)**

US RTE 5 3+73.5 RT

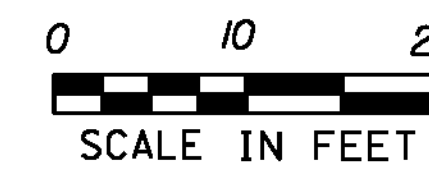
US RTE 5 5+70.9 RT

SPECIAL PROVISION (CONCRETE PAVER STRIP)

US RTE 5 3+00.0 - 3+44.9 RT



BRADFORD



| | | | | | |
|-----------------|--------------|---------------------------------|------------------------|-------------|------------|
| PROJECT NAME: | STATEWIDE | FILE NAME: | zlf116bdr_bradford.dgn | PLOT DATE: | 10/9/2013 |
| PROJECT NUMBER: | STP SDWK(II) | PROJECT LEADER: | E. ATKINS | DRAWN BY: | T. BIGELOW |
| | | DESIGNED BY: | T. BIGELOW | CHECKED BY: | E. ATKINS |
| | | BRADFORD ROADWAY LAYOUT SHEET 2 | | SHEET | 9 OF 53 |

SEE LEGEND ON SHEET 3

