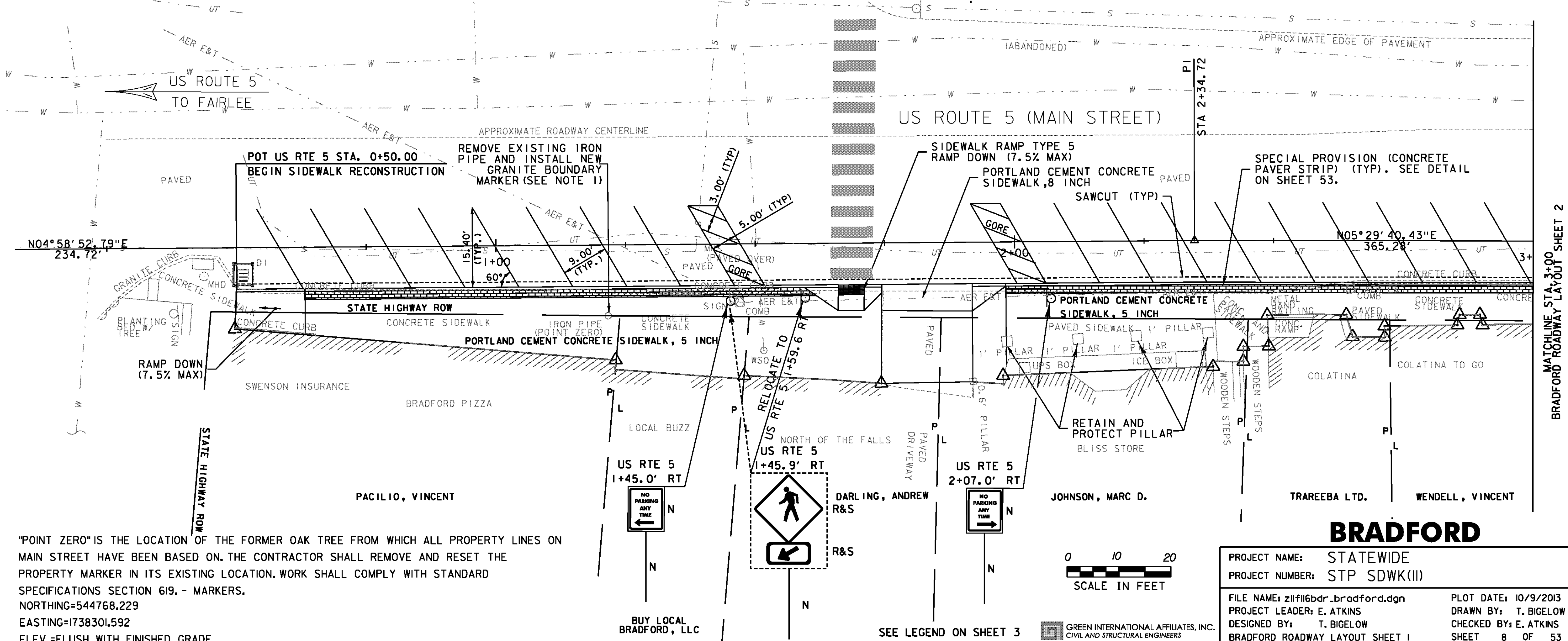


- REMOVAL OF EXISTING SIDEWALK (SOLID ROCK EXCAVATION)**
US RTE 5 0+50.0 - 3+00.0 RT
- VERTICAL GRANITE CURB**
US RTE 5 0+50.0 - 1+66.0 RT
US RTE 5 1+74.0 - 1+74.3 RT
US RTE 5 1+91.8 - 3+00.0 RT
- REMOVAL OF EXISTING CURB**
US RTE 5 0+50.0 - 1+66.0 RT
US RTE 5 1+91.8 - 3+00.0 RT
- PORTLAND CEMENT CONCRETE SIDEWALK, 5 INCH**
US RTE 5 0+50.0 - 1+74.3 RT
US RTE 5 1+91.8 - 3+00.0 RT
- PORTLAND CEMENT CONCRETE SIDEWALK, 8 INCH**
US RTE 5 1+74.3 - 1+91.8 RT
- 5 INCH SIDEWALK RAMPS WITH DETECTABLE WARNING SURFACE**
US RTE 5 1+68.5 RT (TYPE 5)
- ADJUST ELEVATION OF VALVE BOX**
US RTE 5 1+51.5 RT
- DURABLE 4 INCH WHITE LINE**
US RTE 5 0+52.9 - 1+35.6 RT/LT (PARKING)
US RTE 5 2+07.7 - 3+00.0 RT/LT (PARKING)
US RTE 5 1+37.1 - 1+51.7 RT/LT (GORE)
US RTE 5 1+91.5 - 2+06.0 RT/LT (GORE)
- REMOVAL OF EXISTING PAVEMENT MARKINGS**
US RTE 5 0+52.9 - 3+00.0 RT/LT
- REMOVING SIGNS**
US RTE 5 1+45.9 RT
US RTE 5 1+45.9 RT
- ERECTING SALVAGED SIGNS**
US RTE 5 1+59.6 RT
US RTE 5 1+59.6 RT
- SPECIAL PROVISION (INLET PROTECTION, GEOTEXTILE FABRIC)**
US RTE 5 0+52.7 RT
- SPECIAL PROVISION (CONCRETE PAVER STRIP)**
US RTE 5 0+63.2 - 1+60.8 RT
US RTE 5 1+92.3 - 3+00.0 RT
- SPECIAL PROVISION (HAND-PLACED BITUMINOUS CONCRETE MATERIAL, DRIVES)**
US RTE 5 1+74.3 - 1+91.8 RT



NOTES:
 1. "POINT ZERO" IS THE LOCATION OF THE FORMER OAK TREE FROM WHICH ALL PROPERTY LINES ON MAIN STREET HAVE BEEN BASED ON. THE CONTRACTOR SHALL REMOVE AND RESET THE PROPERTY MARKER IN ITS EXISTING LOCATION. WORK SHALL COMPLY WITH STANDARD SPECIFICATIONS SECTION 619. - MARKERS.
 NORTHING=544768.229
 EASTING=1738301.592
 ELEV.=FLUSH WITH FINISHED GRADE

BRADFORD

PROJECT NAME: STATEWIDE
 PROJECT NUMBER: STP SDWK(III)

FILE NAME: z1f116bdr_bradford.dgn
 PROJECT LEADER: E. ATKINS
 DESIGNED BY: T. BIGELOW
 BRADFORD ROADWAY LAYOUT SHEET 1

PLOT DATE: 10/9/2013
 DRAWN BY: T. BIGELOW
 CHECKED BY: E. ATKINS
 SHEET 8 OF 53

MATCHLINE STA. 3+00
BRADFORD ROADWAY LAYOUT SHEET 2