

GPS CONTROL POINTS

BRADFORD CORS ARP

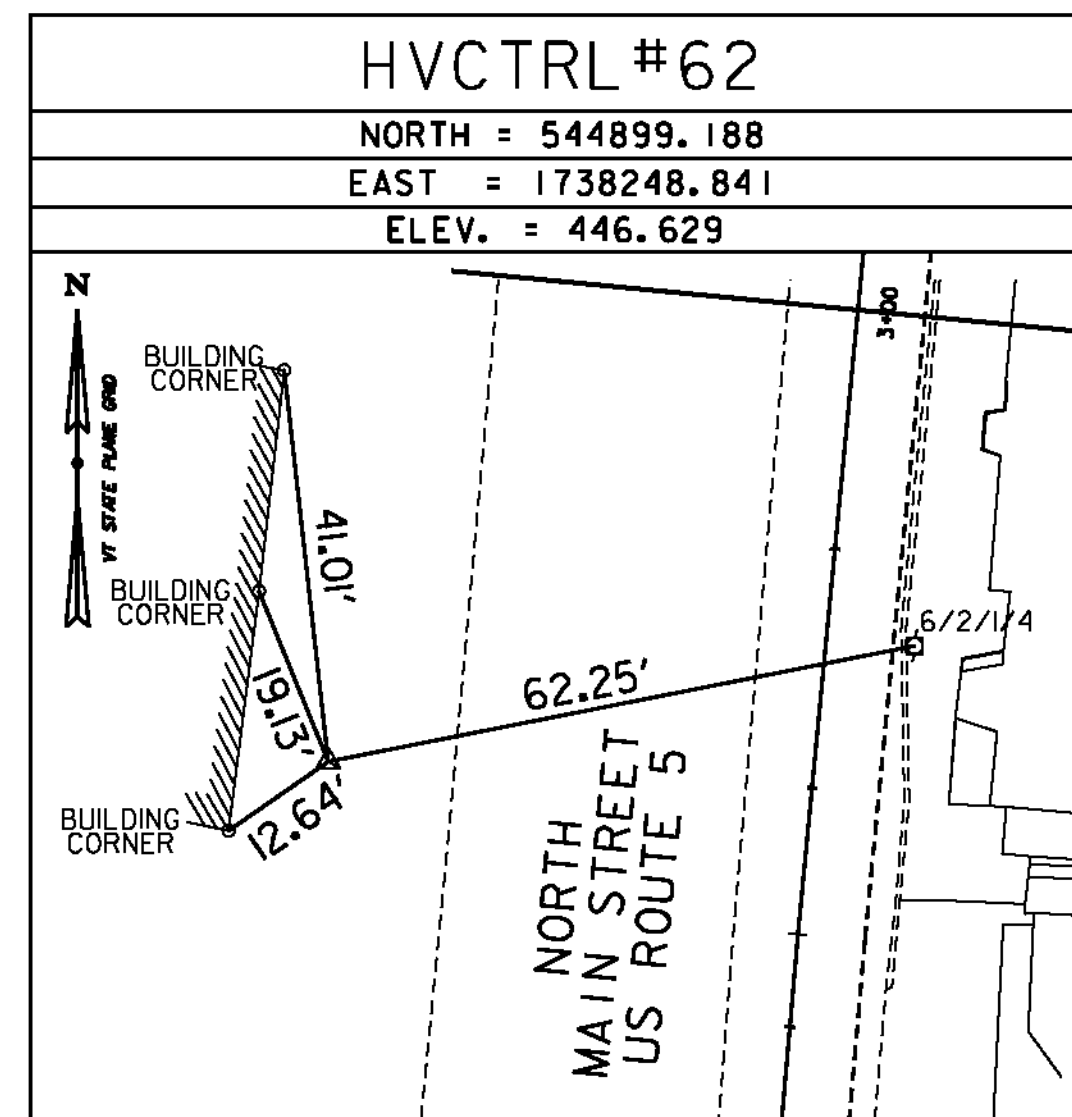
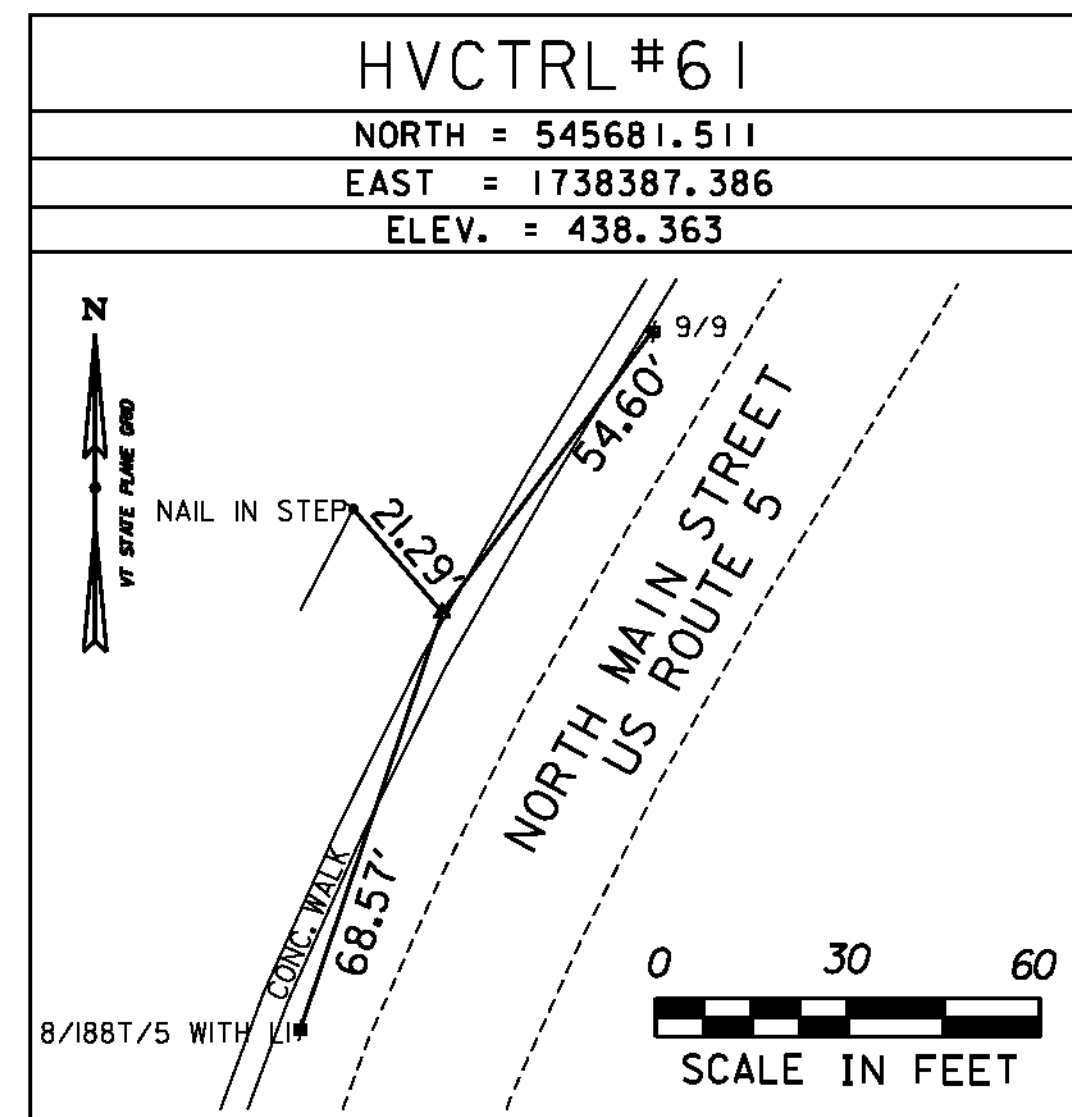
PID DJ8957

N = 549808.87
E = 1741884.52
ELLIP HEIGHT = 414.75

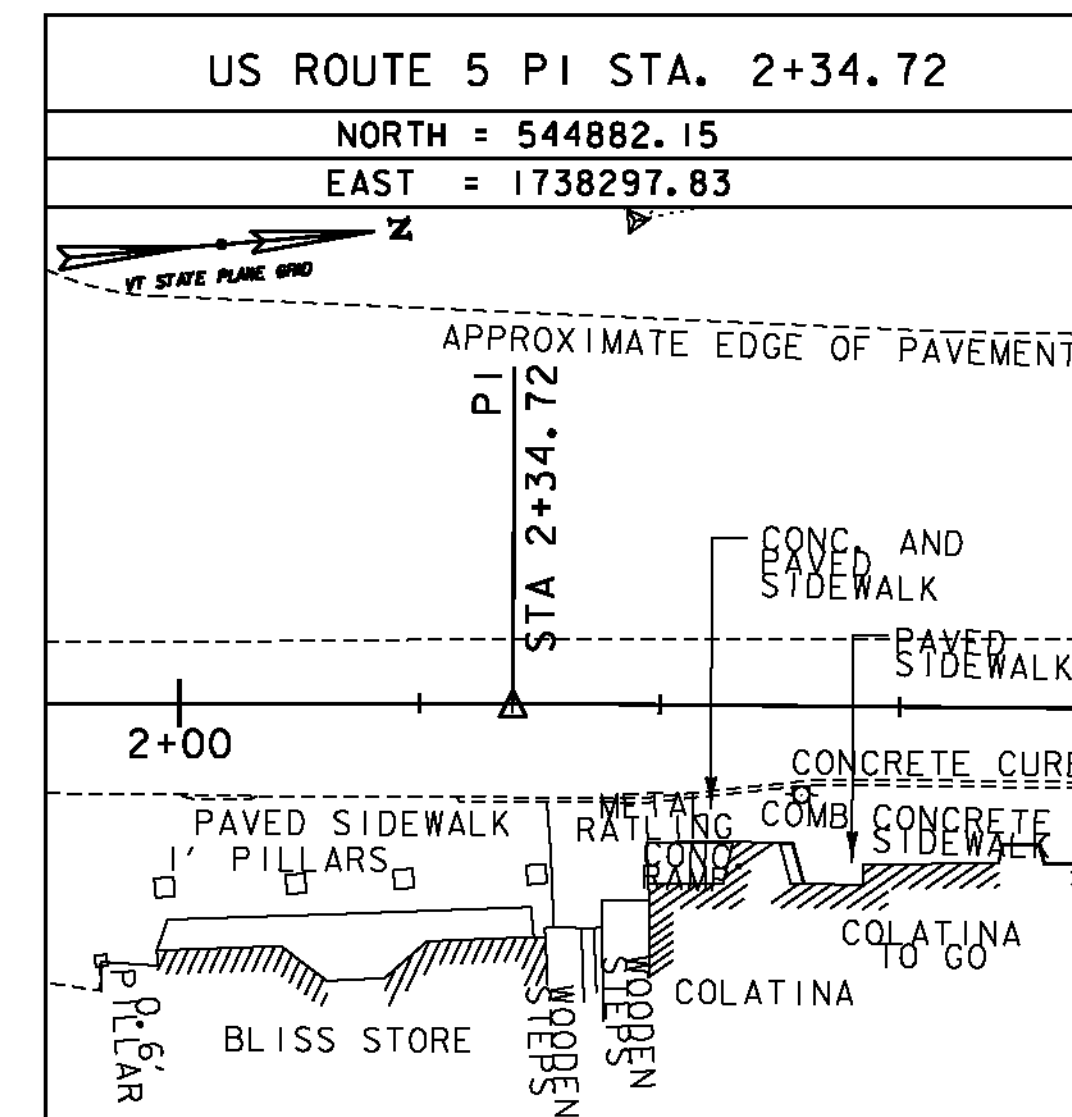
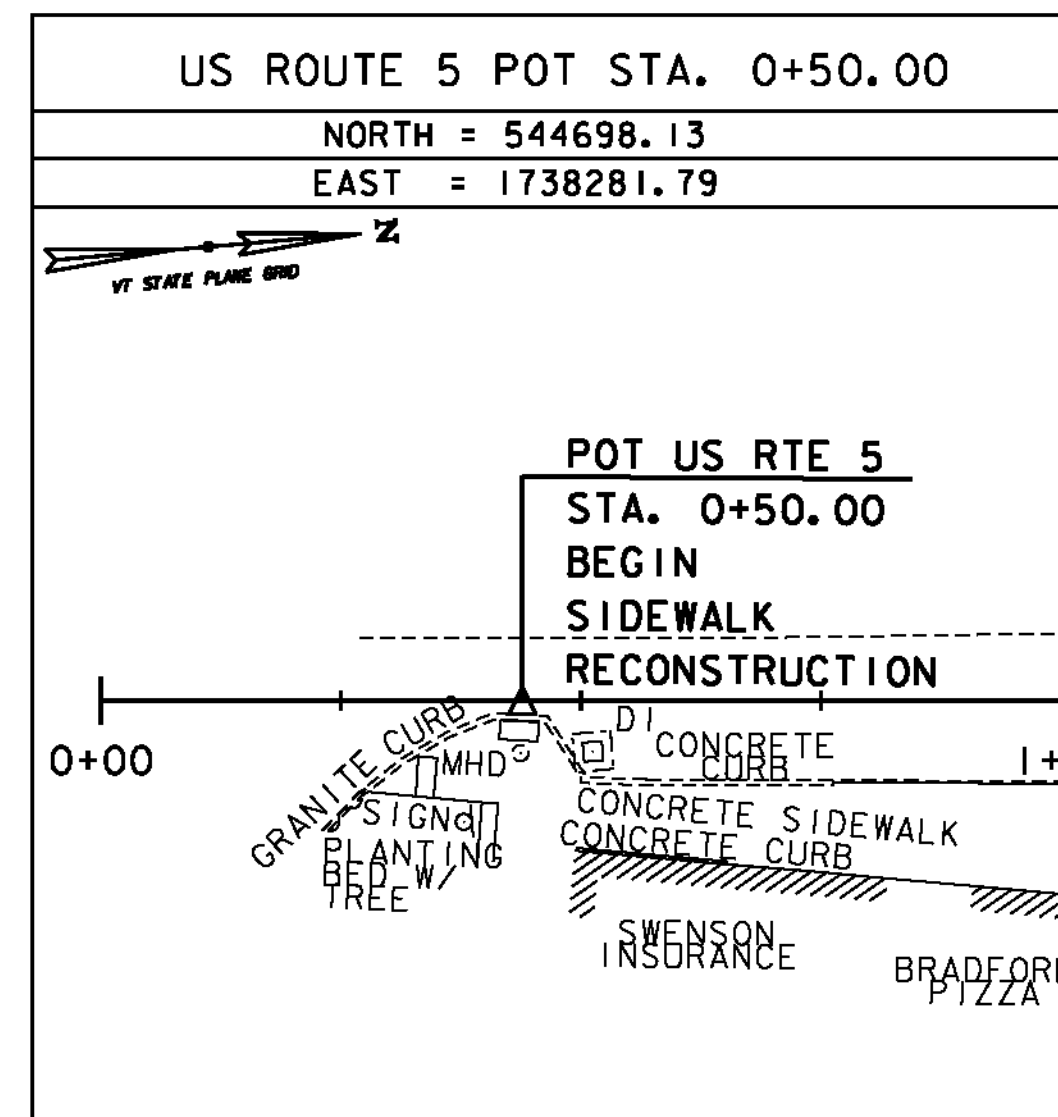
STATION IS A GPS CONTINUOUSLY OPERATING REFERENCE STATION. STATION IS THE ANTENNA REFERENCE POINT OF THE GPS ANTENNA. THE ANTENNA IS MOUNTED ON THE ROOF OF OXBOW HIGH SCHOOL, BRADFORD, VT. THE MONUMENT IS ATTACHED TO A TWO STORY CONCRETE/BRICK BUILDING WITH A 6 FT CONCRETE FOUNDATION BUILT IN 1972. THE MAST IS A 1.75 INCH DIA GALV PIPE THAT IS 108 INCHES LONG. THE MAST ATTACHED TO A STEEL MOUNTING FRAME WITH THREE ATTACHMENTS CONSISTING OF 3/8 INCH SS THROUGH BOLTS. THE MOUNTING FRAME IS ATTACHED TO THE BUILDING USING 8 ATTACHMENT POINTS. THE TOP 4 ARE 1/2 INCH SS BOLTS SECURED TO THE BRICK OR CONC WITH LEAD ANCHORS. THE BOTTOM 4 ATTACHMENTS ARE TROUGH BOLTED AND CONSIST OF 1/2 INCH SS THREADED ROD AND NUTS.

• DESCRIPTION PROVIDED BY VERMONT AGENCY OF TRANSPORTATION GEODETIC SURVEY UNIT

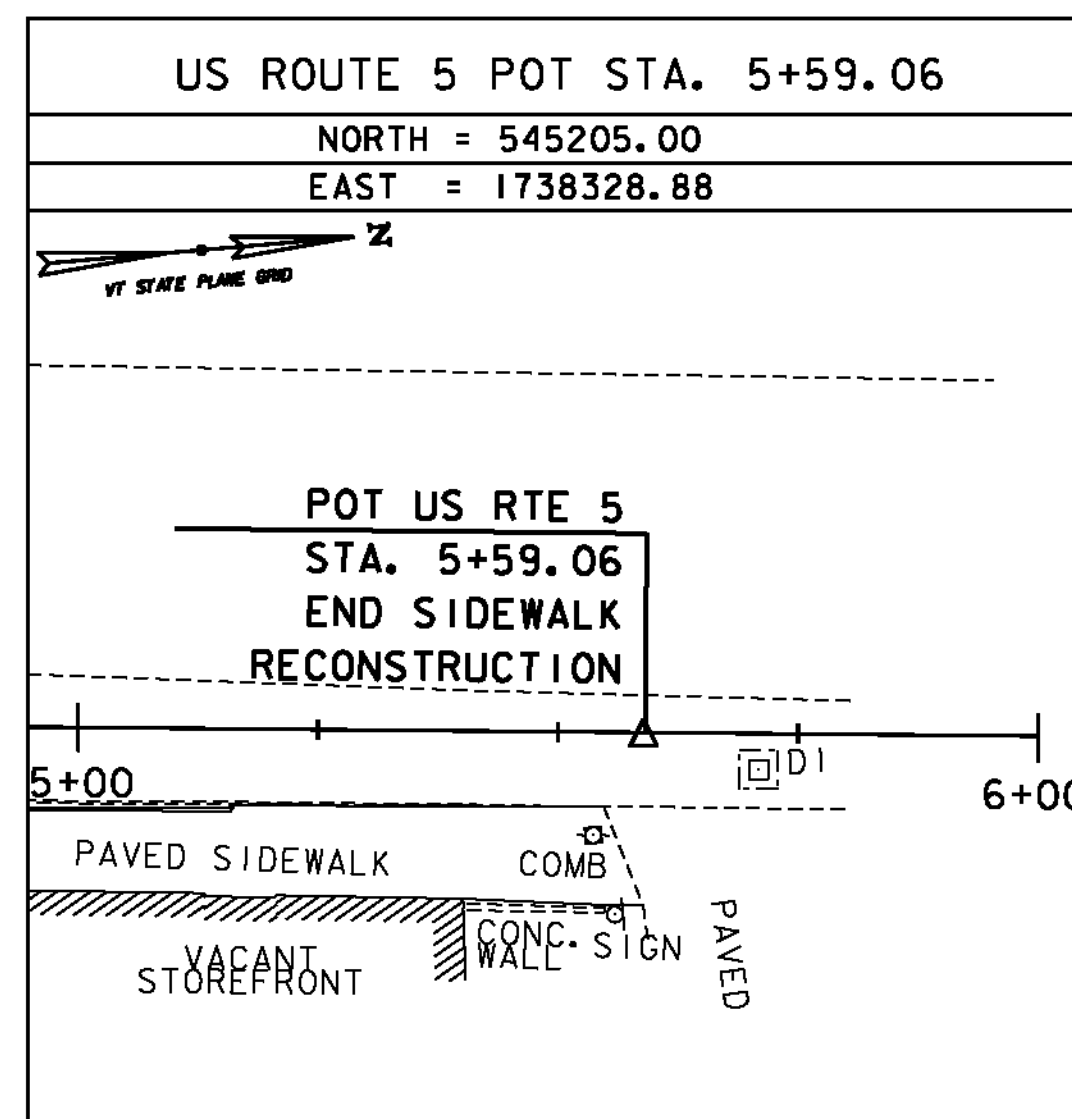
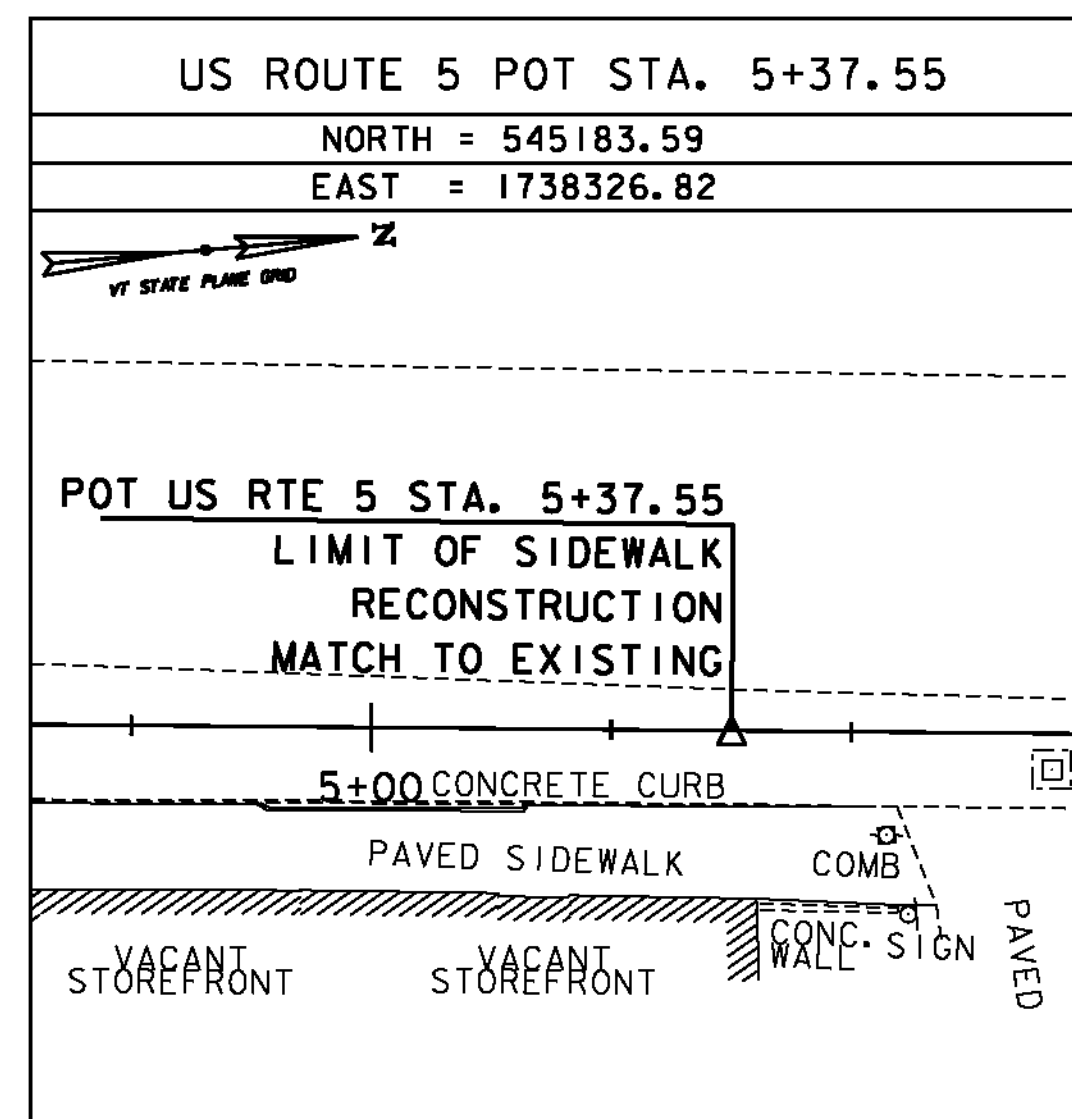
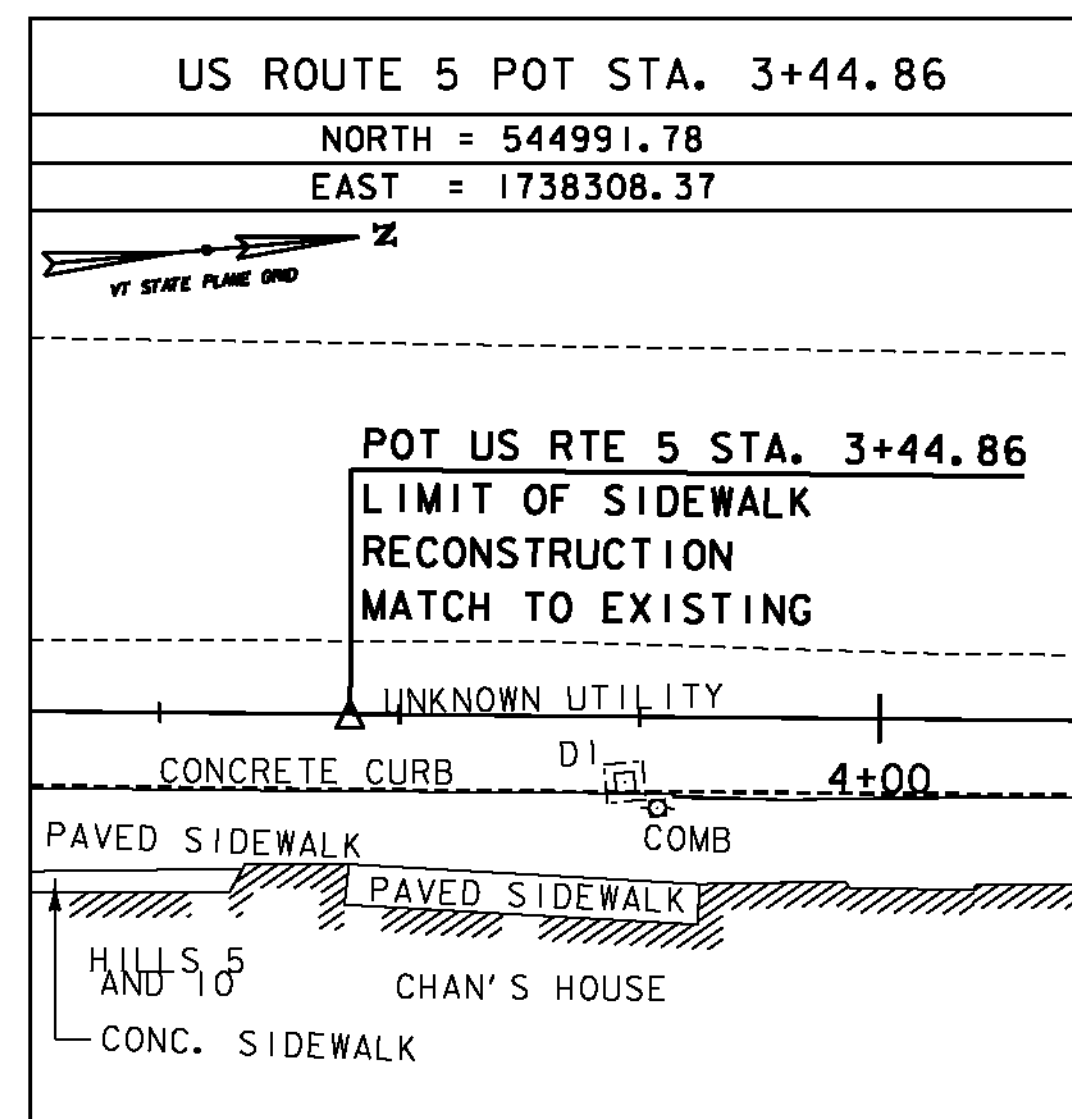
TRAVERSE TIES



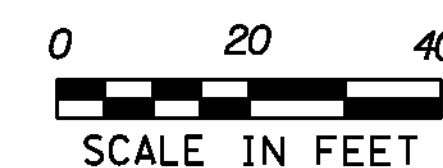
ALIGNMENT TIES



ALIGNMENT TIES



DATUM	
VERTICAL	NAVD 88(GEOD09) FT
HORIZONTAL	NAD 83(CORS) SFT
ADJUSTMENT	NONE



GREEN INTERNATIONAL AFFILIATES, INC.
CIVIL AND STRUCTURAL ENGINEERS

BRADFORD

PROJECT NAME:	STATEWIDE	FILE NAME:	z11f1611_Bradford.dgn	PLOT DATE:	10/9/2013
PROJECT NUMBER:	STP SDWK(11)	PROJECT LEADER:	E. ATKINS	DRAWN BY:	S. MUSTO
		DESIGNED BY:	T. BIGELOW	CHECKED BY:	E. ATKINS
		BRADFORD TIE SHEET		SHEET	7 OF 53