

PORTLAND CEMENT  
CONCRETE SIDEWALK, 5 INCH  
STA. 187+17, LT

DETECTABLE WARNING SURFACE  
STA. 187+17, LT

DURABLE & TEMPORARY 4 INCH WHITE LINE  
(ALL LINES WILL INCLUDE EDGE LINE BREAKS  
AND RADII FOR SIDE ROADS)  
STA. 185+50 TO 190+50, SOLID LT & RT  
STA. 185+50 TO 186+31, SOLID RT (LANE LINE)  
STA. 185+50 TO 186+31, DASHED LT  
STA. 186+93, SOLID RT (EDGELINES, CONNOR WAY)  
STA. 187+47 TO 190+50, SOLID LT (LANE LINE)  
STA. 187+47 TO 188+72, SOLID C (LANE LINE)  
STA. 188+72 TO 190+25, DOTTED C  
STA. 188+72 TO 190+50, DOTTED RT

DURABLE & TEMPORARY 4 INCH YELLOW LINE  
(ALL LINES WILL INCLUDE C BREAKS FOR SIDE ROADS)  
STA. 185+50 TO 186+31, SOLID LT & RT  
STA. 187+47 TO 190+50, DOUBLE SOLID RT

DURABLE & TEMPORARY 8 INCH WHITE LINE  
STA. 190+37 TO 190+50, RT (HYDRANT)  
SEE SHEET 207

DURABLE & TEMPORARY 24 INCH STOP BAR  
STA. 186+32, RT  
STA. 187+46, LT TO RT

DURABLE LETTER OR SYMBOL, TYPE D TAPE  
STA. 185+52, RT "ONLY"  
STA. 186+21, RT ARROW (2)  
STA. 186+23, RT ARROW  
STA. 187+55, RT ARROW (4)  
STA. 188+12, RT "ONLY"  
STA. 188+68, LT ARROW (2)  
STA. 188+68, LT ARROW  
STA. 188+68, RT ARROW

DURABLE & TEMPORARY CROSSWALK MARKING  
STA. 186+80 TO 187+17, LT (WRIGHT AVE.)  
STA. 187+33, RT TO 187+34, LT

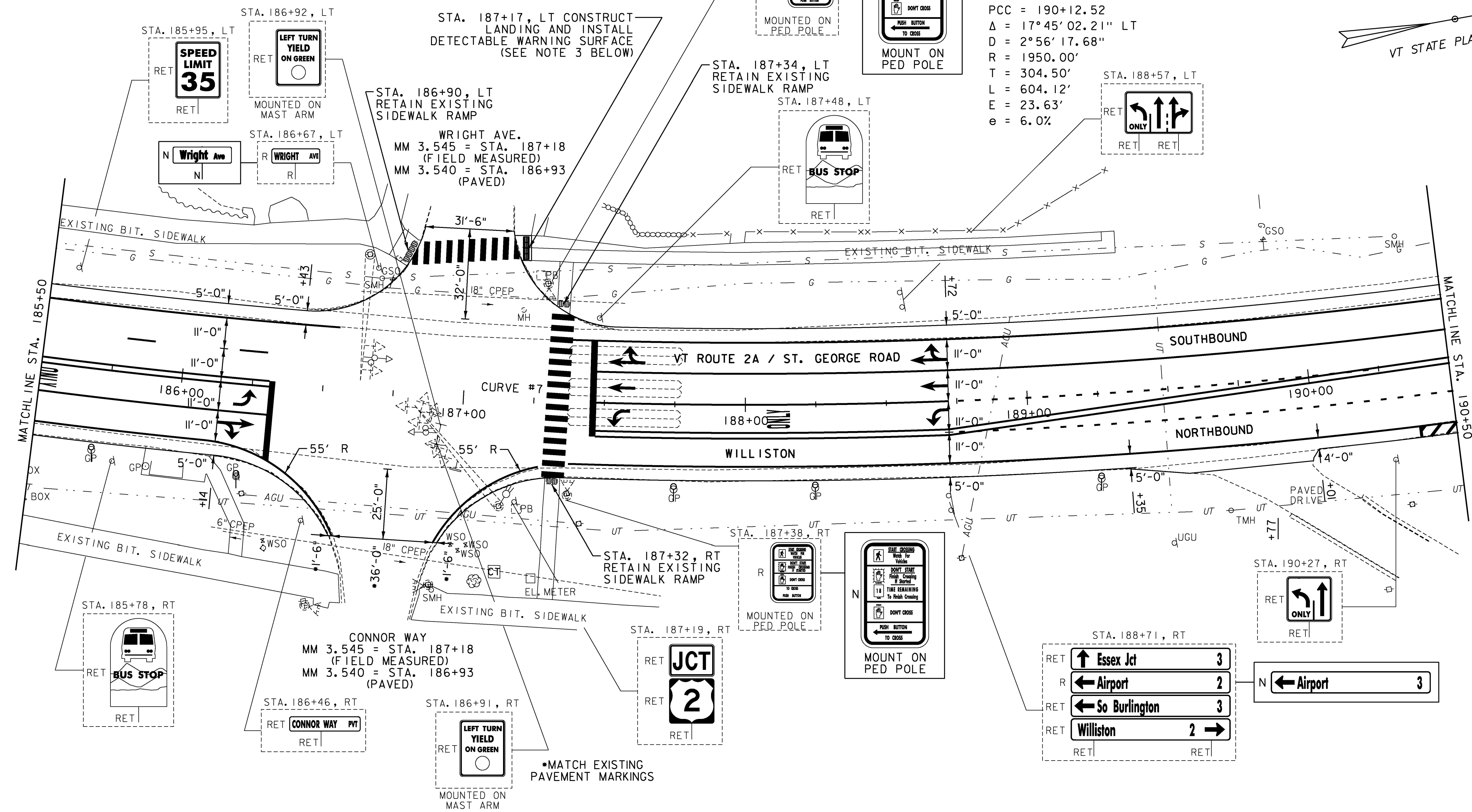
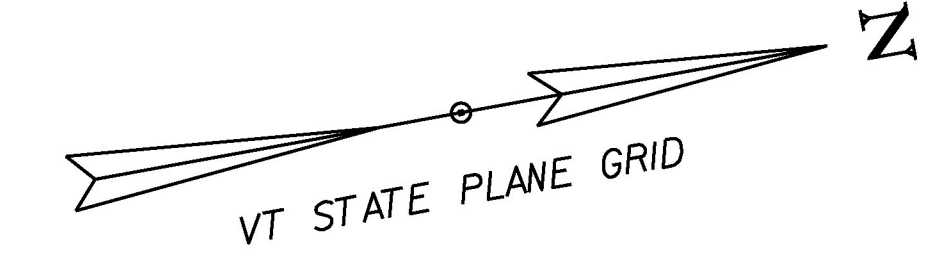
TEMPORARY LETTER OR SYMBOL, PAINT  
STA. 186+21, RT ARROW (2)  
STA. 186+23, RT ARROW  
STA. 187+55, RT ARROW  
STA. 188+68, LT ARROW (2)  
STA. 188+68, LT ARROW  
STA. 188+68, RT ARROW

REMOVING SIGNS  
AS SHOWN - 4

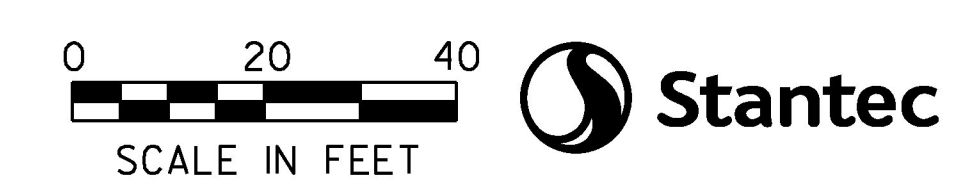
DELINEATOR WITH STEEL POST  
STA. 185+71 TO 186+22, RT  
(2 EA INSTALLED AS SHOWN OR AS  
DIRECTED BY THE ENGINEER)  
STA. 187+75 TO 189+25, RT  
(3 EA INSTALLED AS SHOWN OR AS  
DIRECTED BY THE ENGINEER)

REMOVAL OF EXISTING DELINEATOR  
STA. 185+71 TO 186+22, RT (2 EA)  
STA. 187+75 TO 189+25, RT (3 EA)

CURVE 7 DATA  
PC = 184+08.40  
PCC = 190+12.52  
 $\Delta = 17^\circ 45' 02.21''$  LT  
D =  $2^\circ 56' 17.68''$   
R = 1950.00'  
T = 304.50'  
L = 604.12'  
E = 23.63'  
e = 6.0%



- NOTES:
- FOR LEGENDS, SEE SHEETS 3-4.
  - ALL EXISTING SIGNS NOT SHOWN ON THE PLANS SHALL BE RETAINED.
  - THE SIDEWALK "LANDINGS" NOTED CONSIST OF THE REMOVAL AND REPLACEMENT OF A SINGLE SLAB OF CONCRETE SIDEWALK IN ORDER TO INSTALL A NEW DETECTABLE WARNING SURFACE. SEE SHEET 200 NOTE 9.



PROJECT NAME:	WILLISTON
PROJECT NUMBER:	NH 2949(I)
FILE NAME:	z12d224bdr.dgn
PROJECT LEADER:	G. EDWARDS
DESIGNED BY:	D. BARNES
LAYOUT SHEET	10
PLOT DATE:	2/15/2017
DRAWN BY:	D. BARNES
CHECKED BY:	J. LITTLE
SHEET	229 OF 249