

GPS CONTROL POINTS

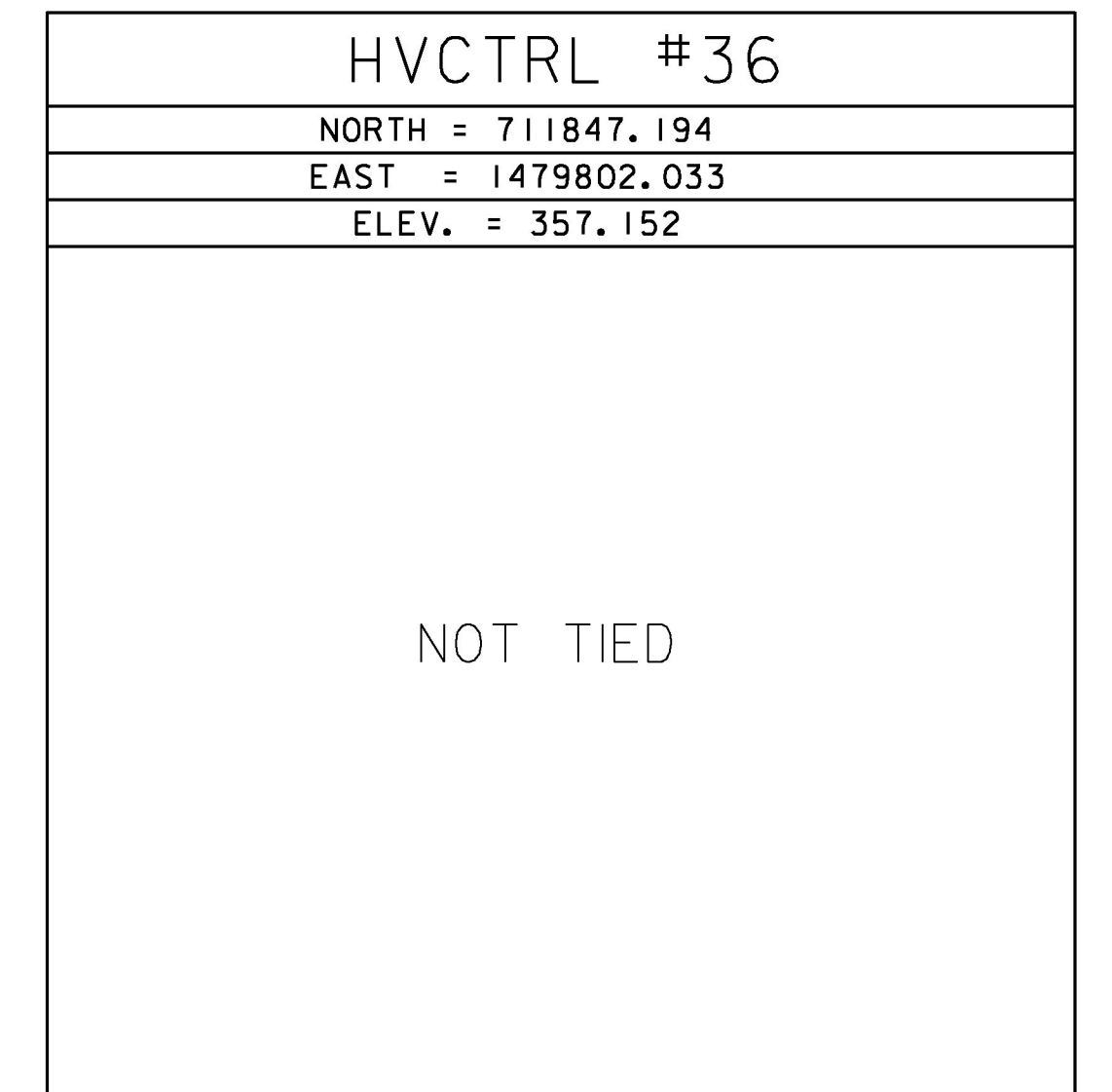
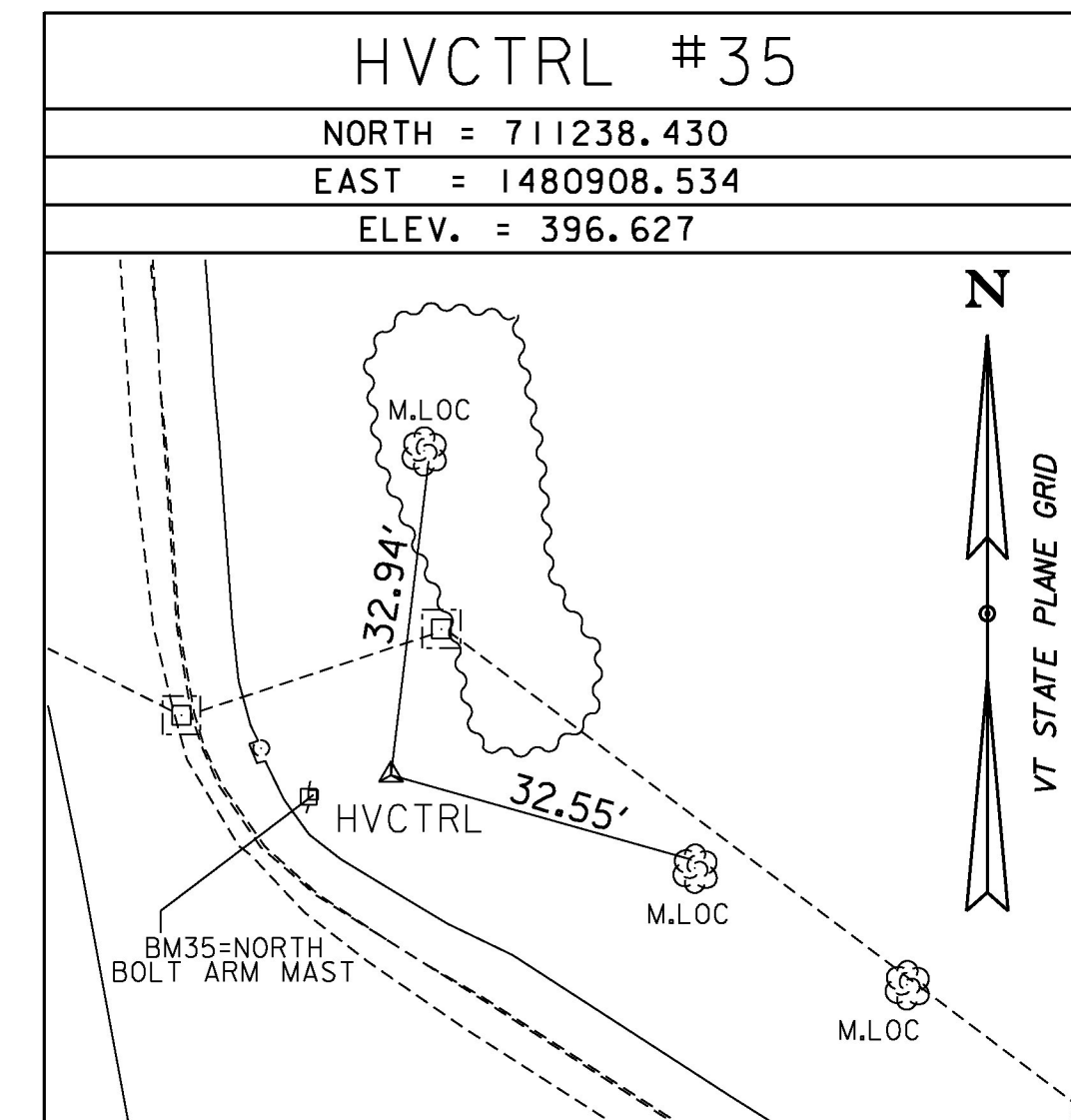
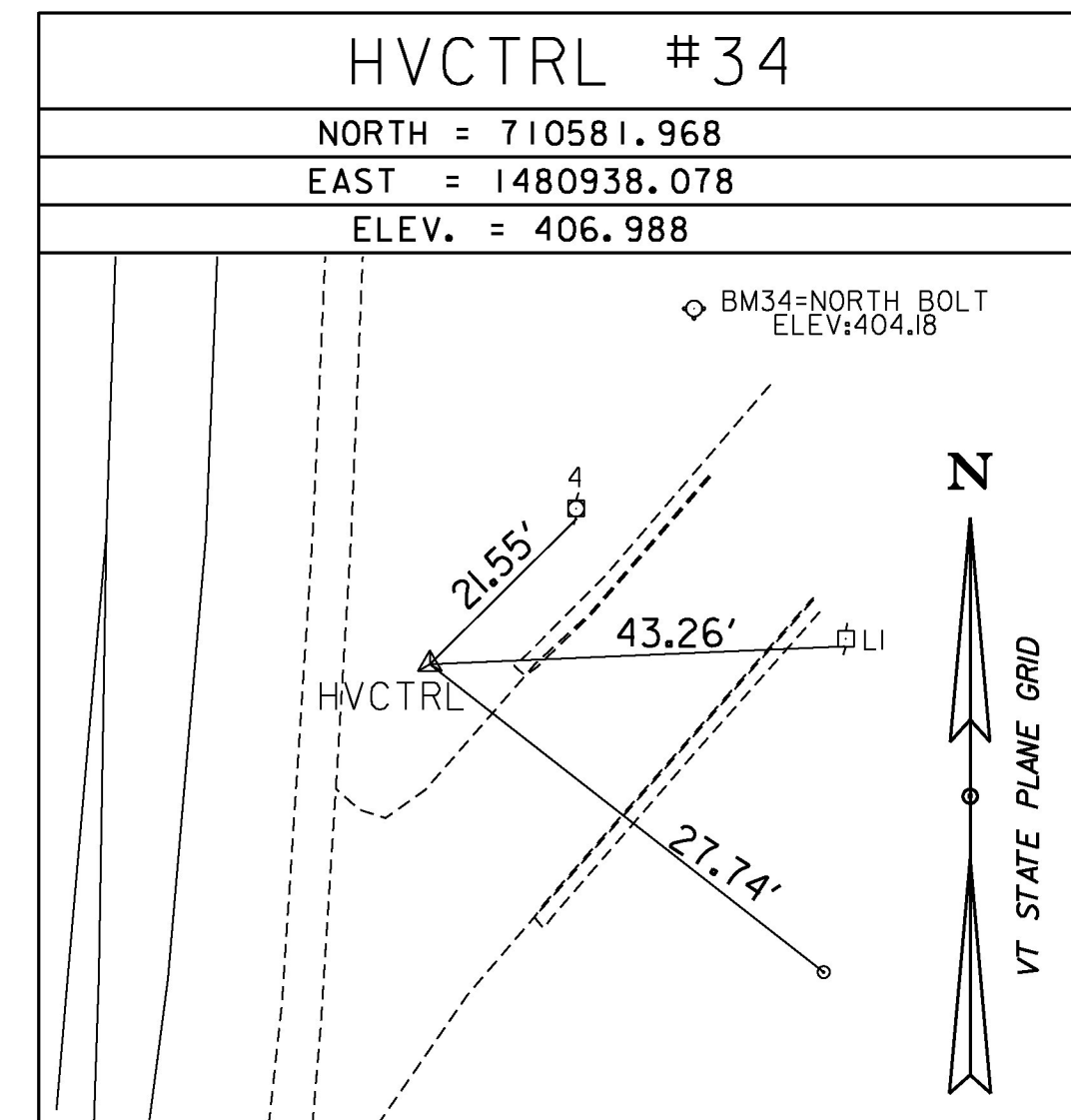
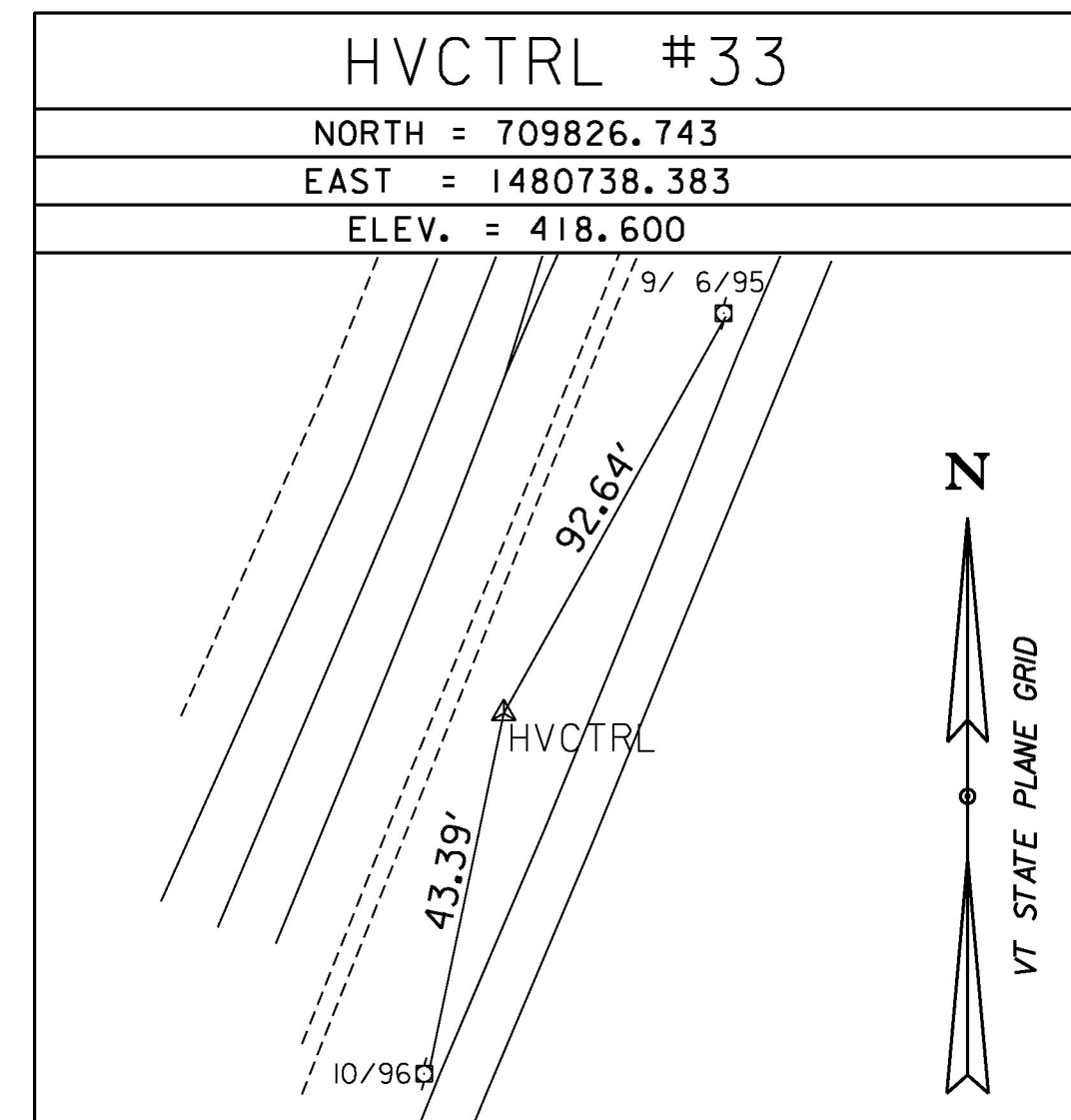
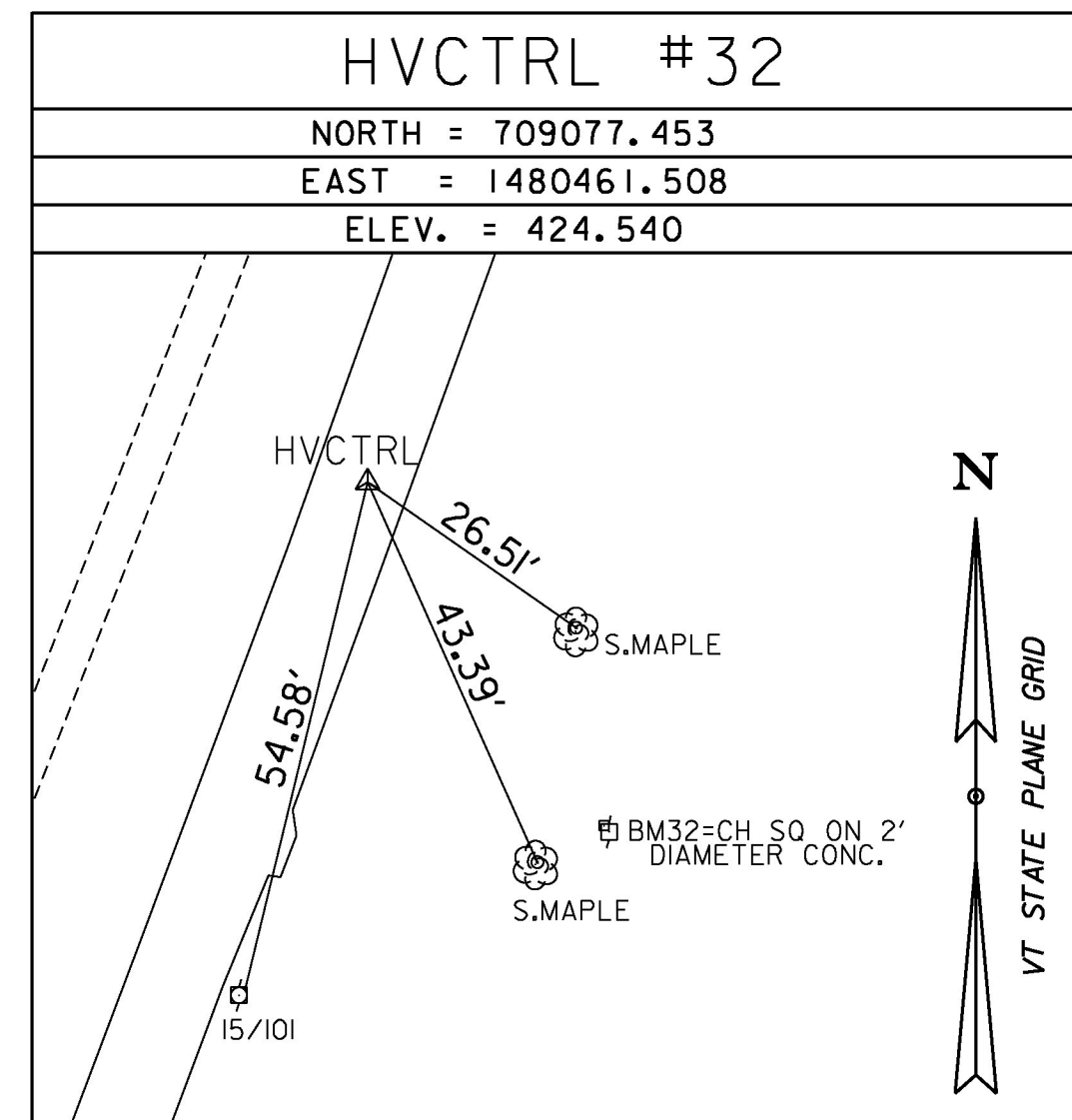
--- HVCTRL #31 ---  
 EXIT 12 I89  
 NORTH = 707578.240  
 EAST = 1479708.140  
 ELEV. = 453.900

--- HVCTRL #32 ---  
 CP 1070  
 NORTH = 709077.453  
 EAST = 1480461.508  
 ELEV. = 424.540

DESCRIBED BY VERMONT AGENCY OF TRANSPORTATION 1996 (CHR)  
 GENERAL LOCATION, WILLISTON, VT. AT THE NORTHWEST QUADRANT OF THE INTERSECTION OF I-89 AND VT ROUTE 2A AT EXIT 12. THE MARK IS SET FLUSH WITH GROUND SURFACE IN THE TOP OF A 30 CM DIAMETER CONCRETE MONUMENT. IT IS 22.4 M (73.5 FT) WEST OF AND ABOUT 6 M (19.7 FT) HIGHER THAN THE WEST EDGE OF PAVEMENT OF VT ROUTE 2A, 1.9 M (6.2 FT) NORTH OF THE NORTH EDGE OF PAVEMENT OF I-89 NORTHBOUND, 4.8 M (15.7 FT) WEST OF THE NORTHWEST CORNER OF THE WEST ABUTMENT OF THE I-89 NORTHBOUND BRIDGE OVER VT ROUTE 2A, AND 1.4 M (4.6 FT) SOUTH OF A FIBERGLASS WITNESS POST.

GENERAL LOCATION, WILLISTON, VT  
 In sidewalk, 11.4 M NW of the NW edge of concrete parking curb at Longhorn Steakhouse, 32.7 M SW of POLE NO. 14, 16.6 M NNE of POLE NO. 15.

TRAVERSE TIES



ALIGNMENT TIES

-----  
 NORTH = \_\_\_\_\_  
 EAST = \_\_\_\_\_  
 ELEV. = \_\_\_\_\_

-----  
 NORTH = \_\_\_\_\_  
 EAST = \_\_\_\_\_  
 ELEV. = \_\_\_\_\_

-----  
 NORTH = \_\_\_\_\_  
 EAST = \_\_\_\_\_  
 ELEV. = \_\_\_\_\_

-----  
 NORTH = \_\_\_\_\_  
 EAST = \_\_\_\_\_  
 ELEV. = \_\_\_\_\_

-----  
 NORTH = \_\_\_\_\_  
 EAST = \_\_\_\_\_  
 ELEV. = \_\_\_\_\_

DATUM	
VERTICAL	NAVD 88
HORIZONTAL	NAD 83 (1996)
ADJUSTMENT	COMPASS

PROJECT NAME:	WILLISTON
PROJECT NUMBER:	NH 2949(I)
FILE NAME:	I2d224\SU.\xi2d224t1.dgn
PROJECT LEADER:	G. EDWARDS
DESIGNED BY:	D. DRAPER
TIE SHEET	1
PLOT DATE:	2/15/2017
DRAWN BY:	D. DRAPER
CHECKED BY:	J. LITTLE
SHEET	213 OF 249