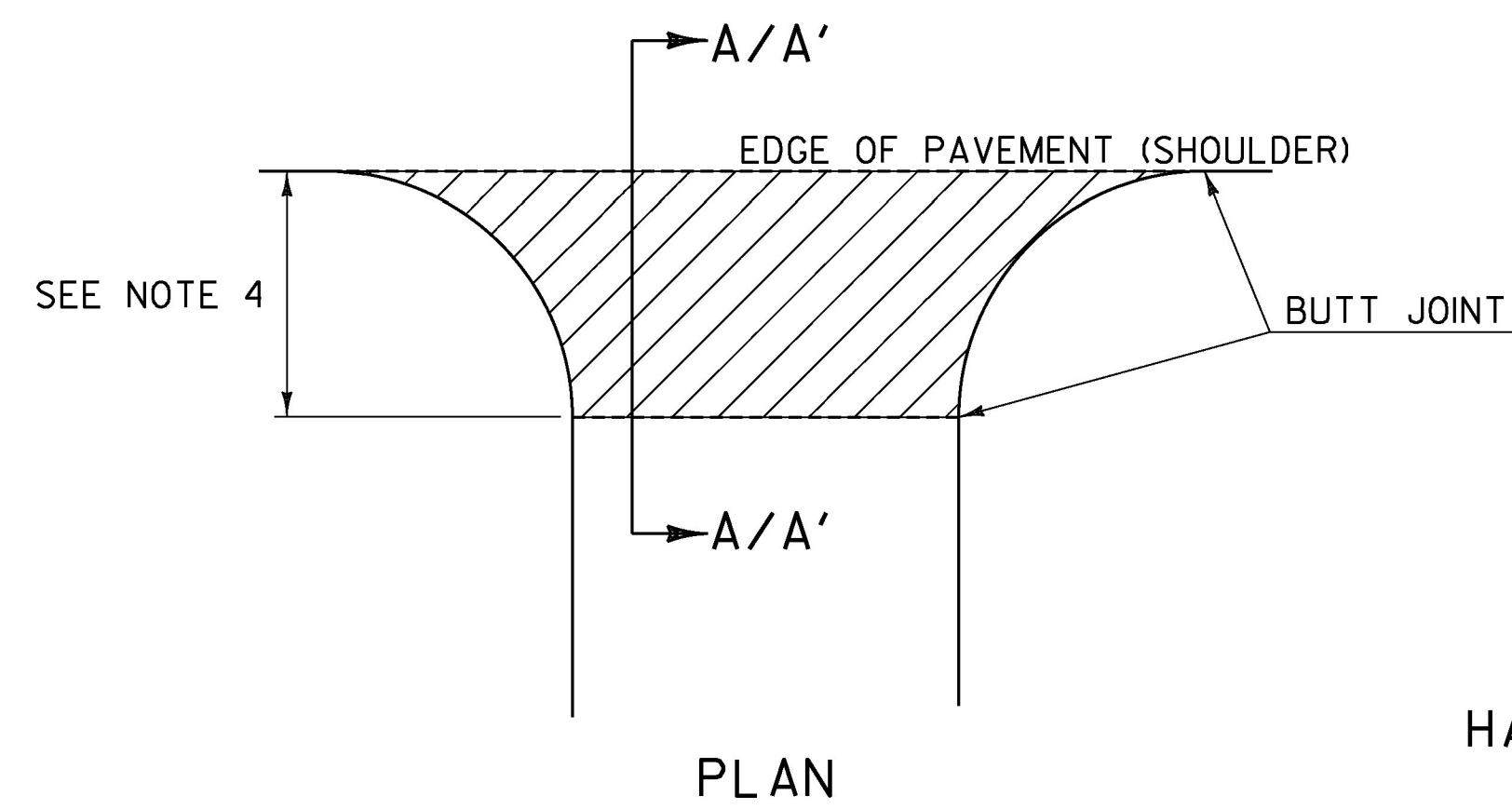
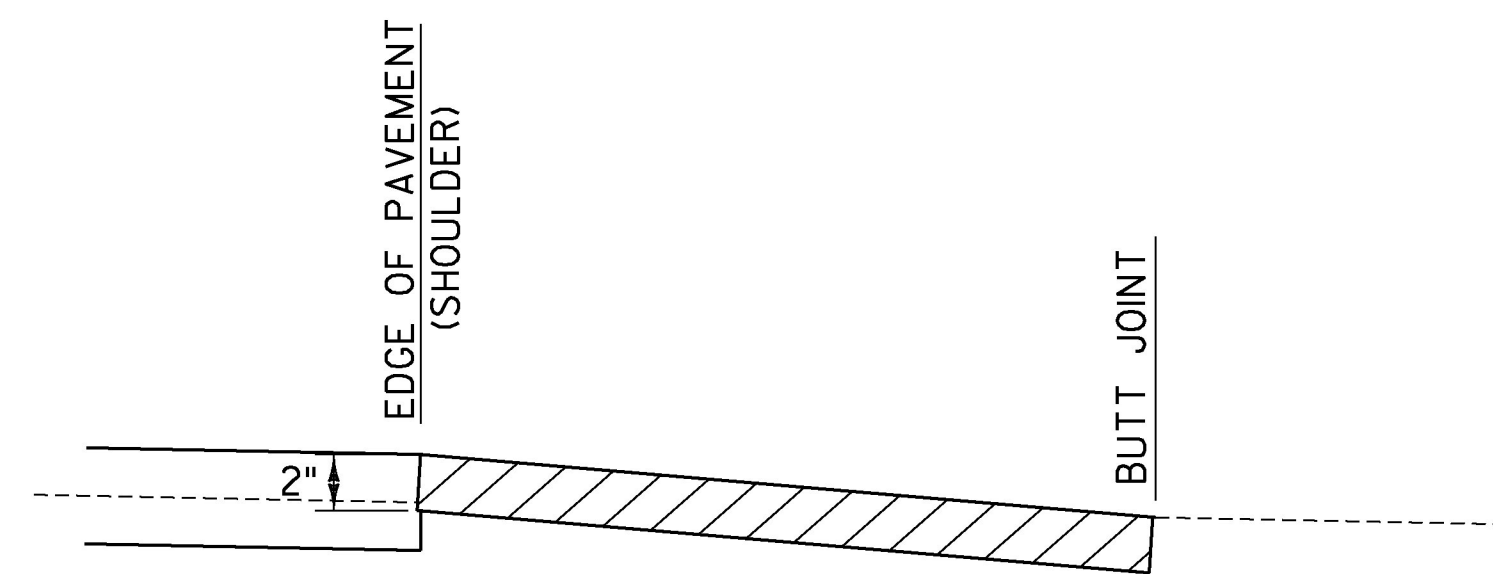


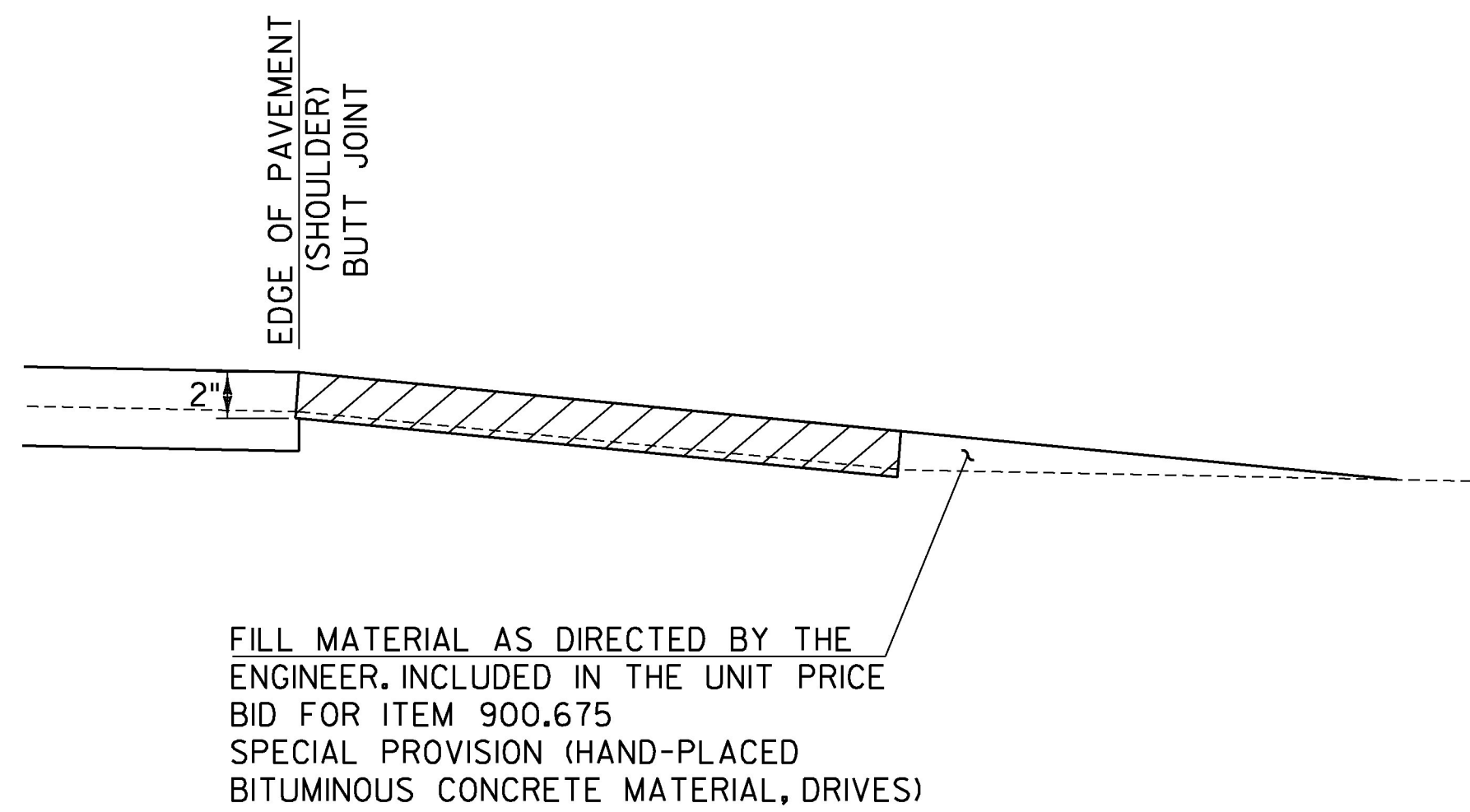
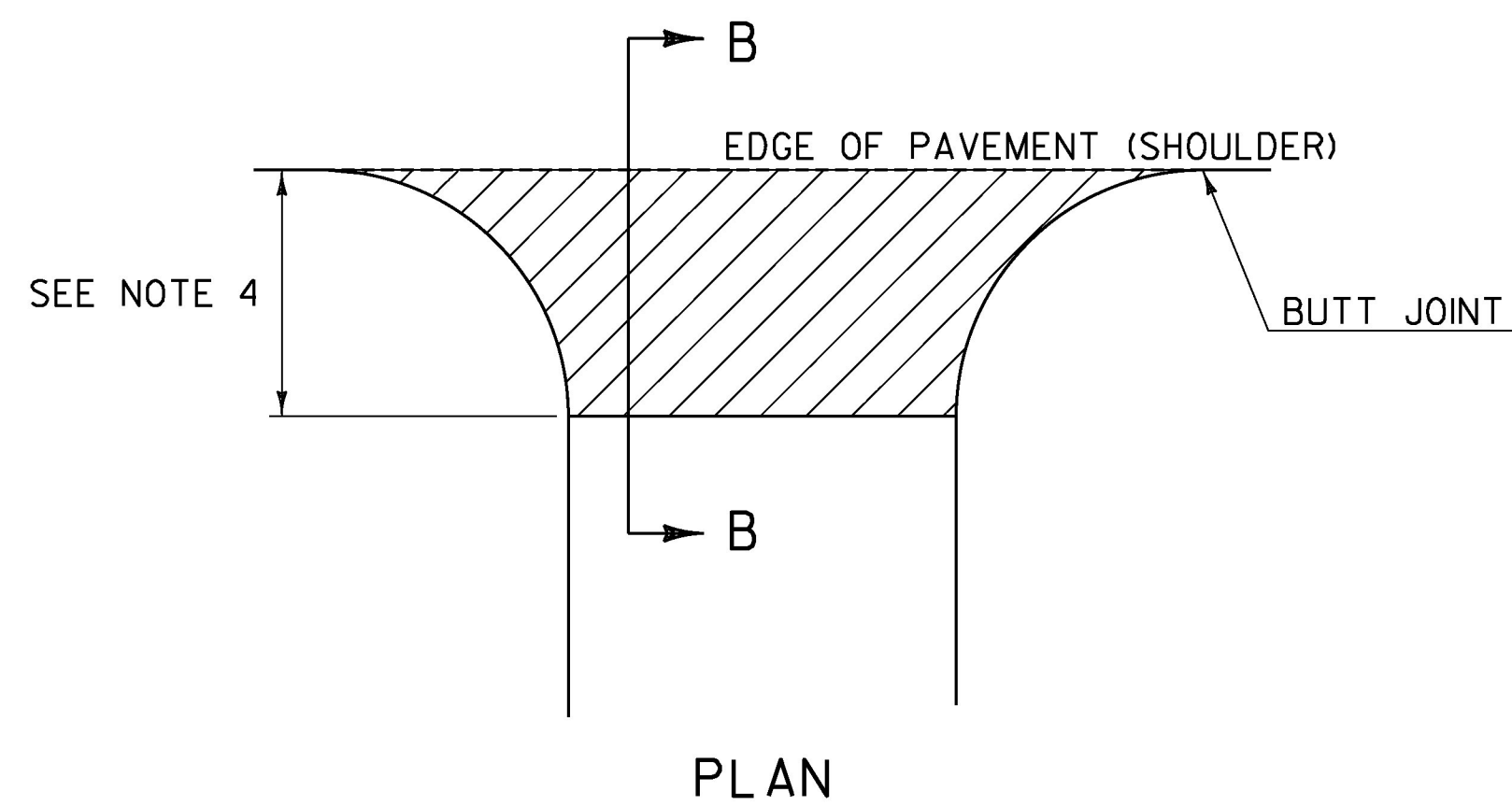
STATION	POSITION	QUANTITY (SY)
VT ROUTE 2A		
148+35	RT	13
149+44	RT	10
161+08	RT	42
162+55	RT	41
165+65	LT	37
166+38	LT	32
168+46	RT	26
169+37	RT	34
189+77	RT	35
192+50	LT	73
200+39	RT	52
202+90	RT	30
203+92	RT	40
SUBTOTAL		465
ROUNDING		5
TOTAL		470



SECTION A-A  
HANDWORK DETAILS FOR PAVED DRIVES (COLD PLANE)



SECTION A' - A'  
HANDWORK DETAILS FOR PAVED DRIVES (OVERLAY)




SECTION B-B  
HANDWORK DETAILS FOR GRAVEL DRIVES

**NOTES:**

- PAVING LIFT SHALL BE A MINIMUM OF 1/2" AND A MAXIMUM OF TWO INCHES.
- THE COST OF PROVIDING AND PLACING SUBBASE MATERIAL, CLEANING EXISTING PAVED SURFACES, INCLUDING POWER EQUIPMENT, AND FOR APPLYING EMULSION, FILLING JOINTS, CRACKS AND HOLES WILL NOT BE PAID DIRECTLY BUT WILL BE INCLUDED IN THE UNIT PRICE BID FOR ITEM 900.675 SPECIAL PROVISION (HAND-PLACED BITUMINOUS CONCRETE MATERIAL, DRIVES).
- EXCAVATION NEEDED TO ACHIEVE PROPER DRIVE SLOPES WILL NOT BE PAID DIRECTLY BUT WILL BE CONSIDERED INCIDENTAL TO CONTRACT ITEM 900.675 SPECIAL PROVISION (HAND-PLACED BITUMINOUS CONCRETE MATERIAL, DRIVES).
- FIELD DRIVES 2'-0" (MIN.); RESIDENTIAL AND COMMERCIAL DRIVES 4'-0" (MIN.); OR AS DIRECTED BY THE ENGINEER.

**LEGEND**

	ITEM 900.675 SPECIAL PROVISION (HAND-PLACED BITUMINOUS CONCRETE MATERIAL, DRIVES)
---	---

NOT TO SCALE

PROJECT NAME: WILLISTON  
PROJECT NUMBER: NH 2949(I)

FILE NAME: z12d224de+all.dgn	PLOT DATE: 2/15/2017
PROJECT LEADER: G. EDWARDS	DRAWN BY: D. BARNES
DESIGNED BY: D. BARNES	CHECKED BY: J. LITTLE
DRIVE DETAIL SHEET	SHEET 203 OF 249

