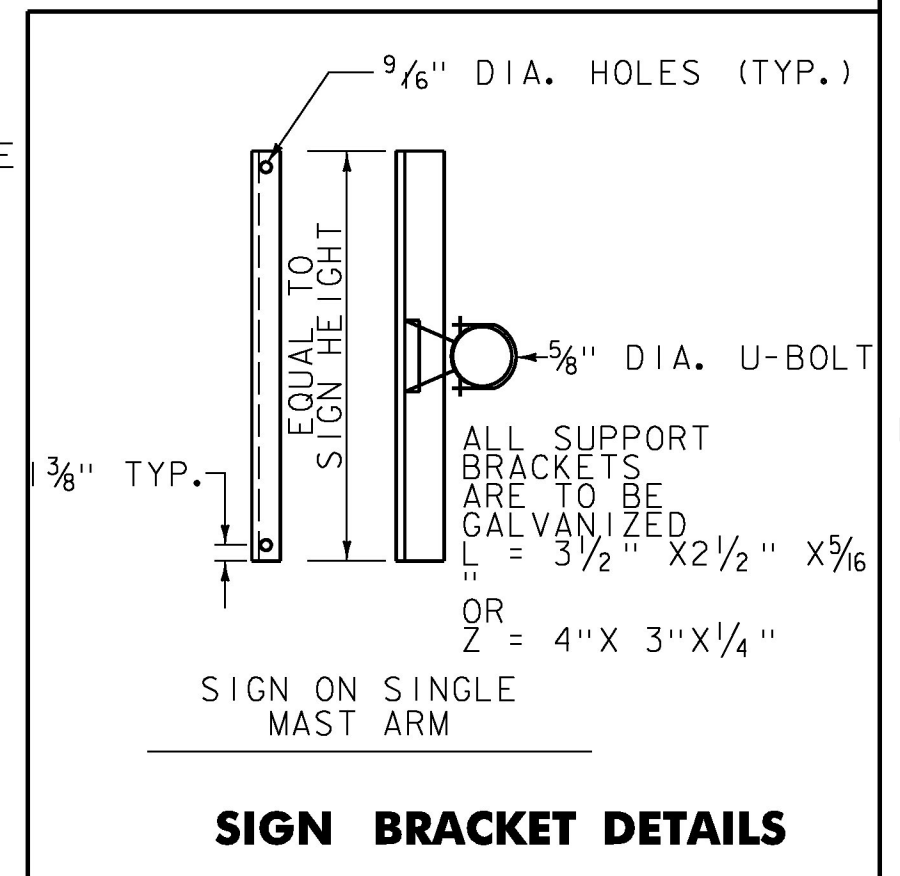
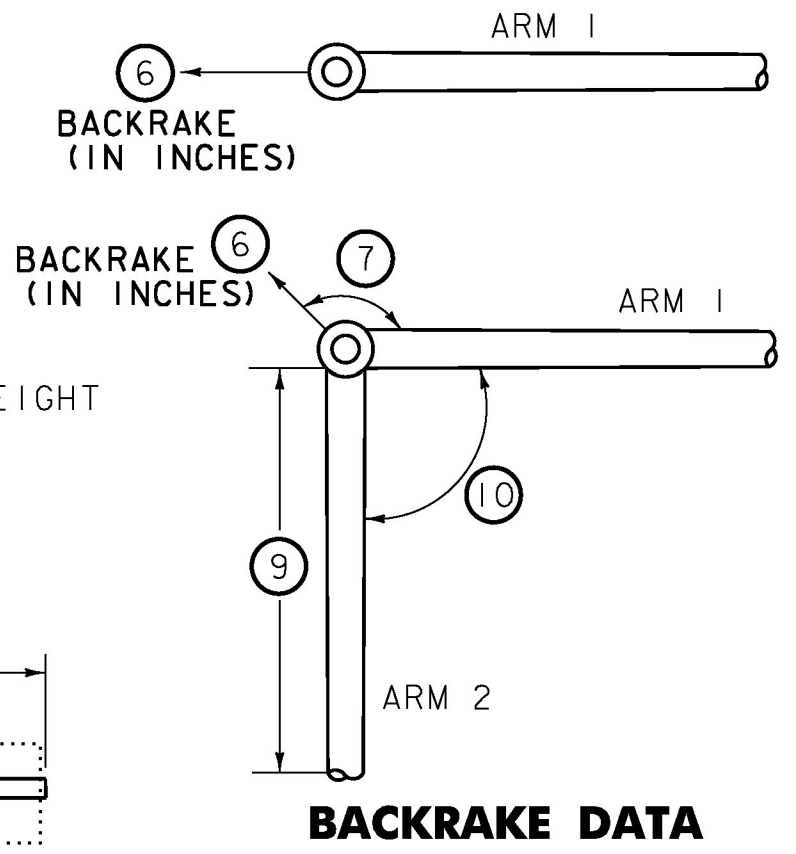
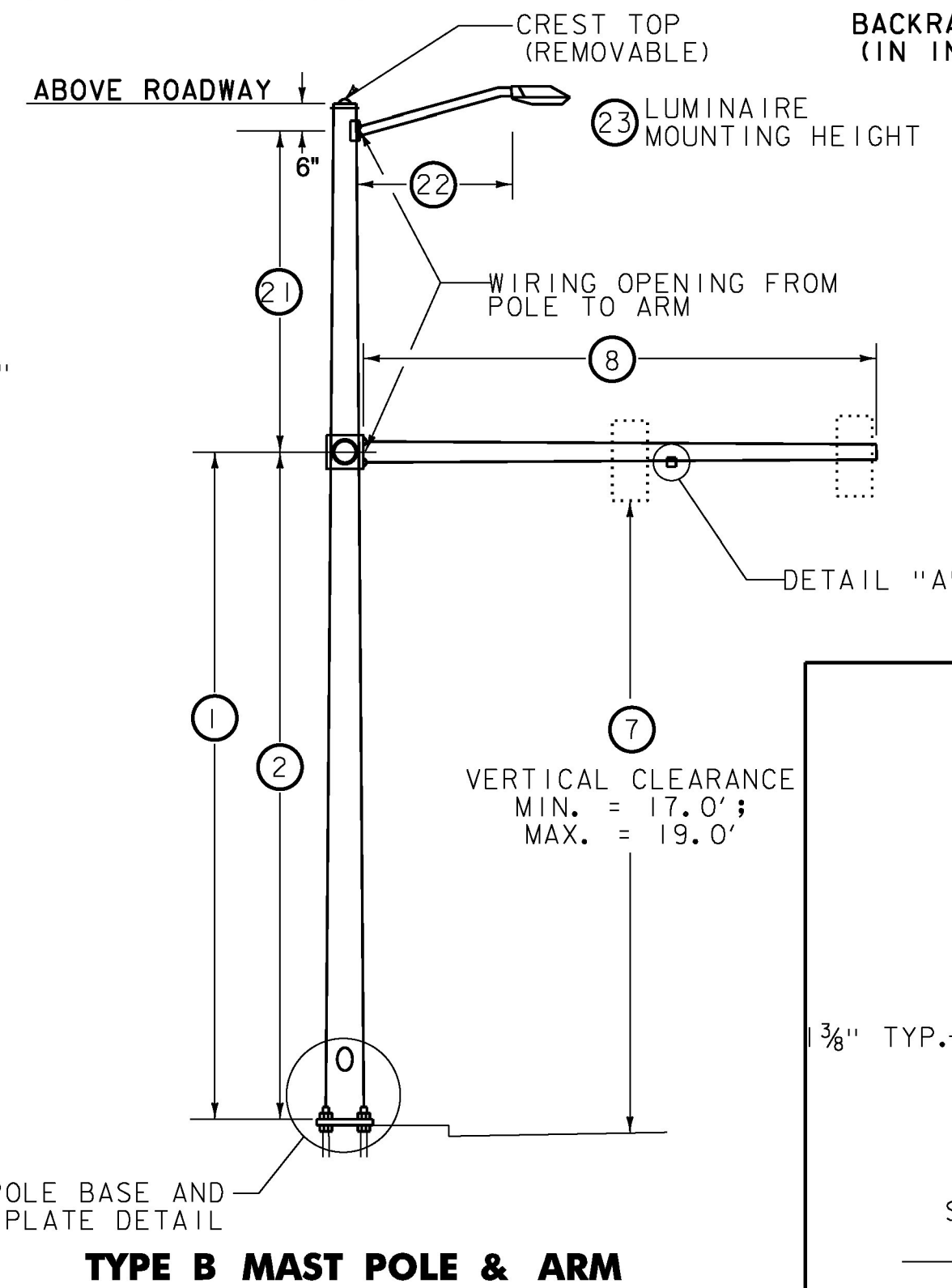
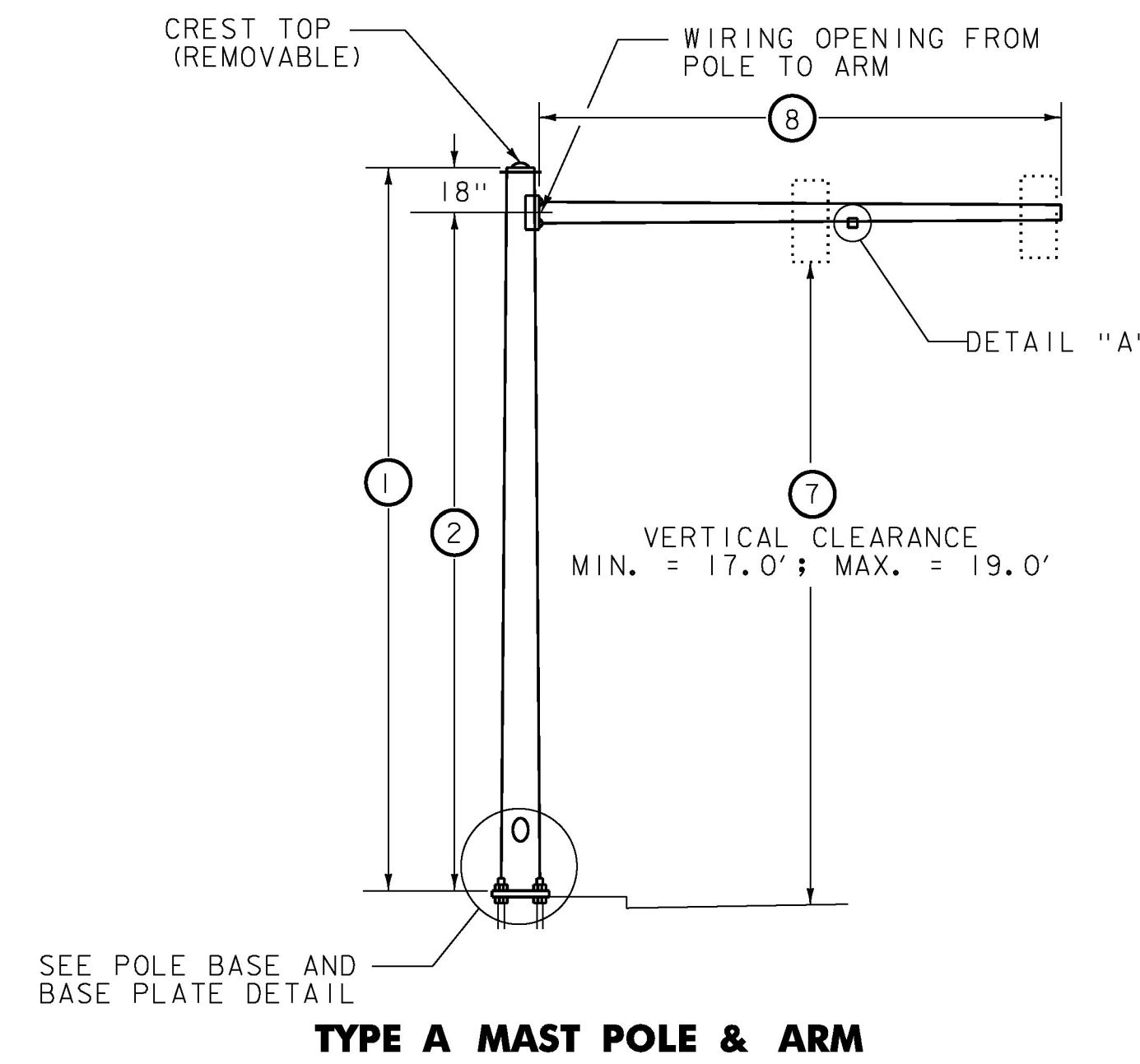


# MAST ARM, POLE & FOOTING DETAILS



**ANCHOR BOLT DETAIL**

SIZE	L (in.)	T (in.)
1 1/4" x 48"	42	8
1 1/2" x 60"	54	9
1 3/4" x 90"	84	9
2" x 96"	96	9

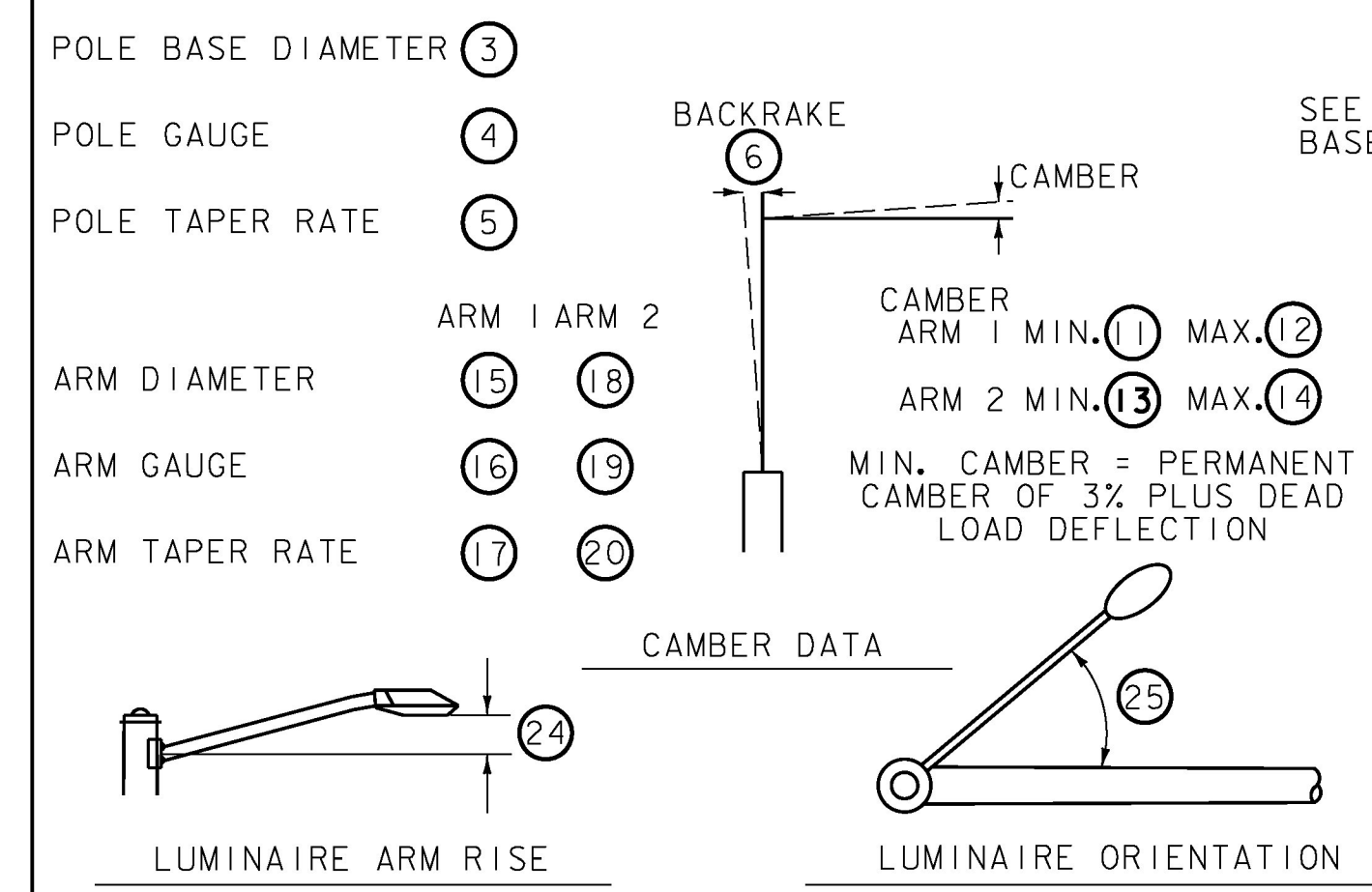
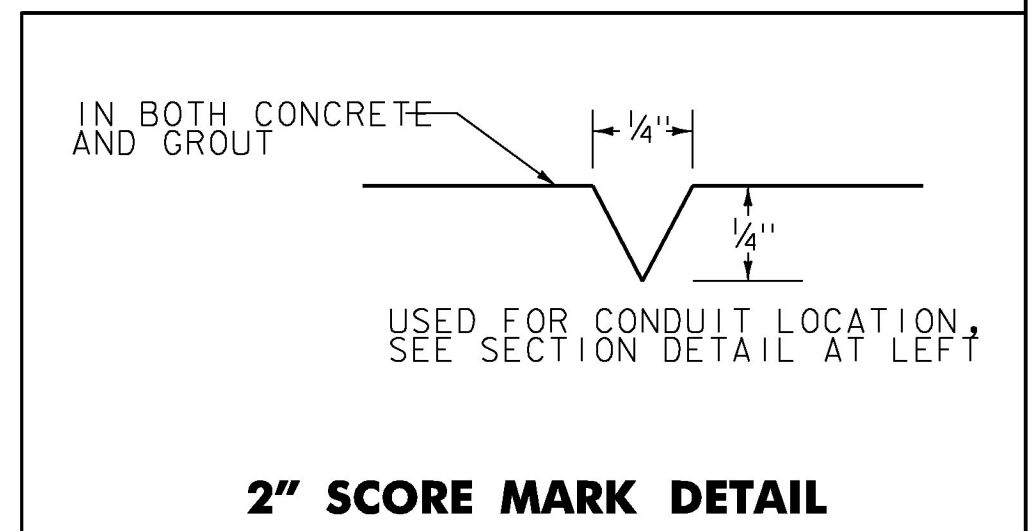
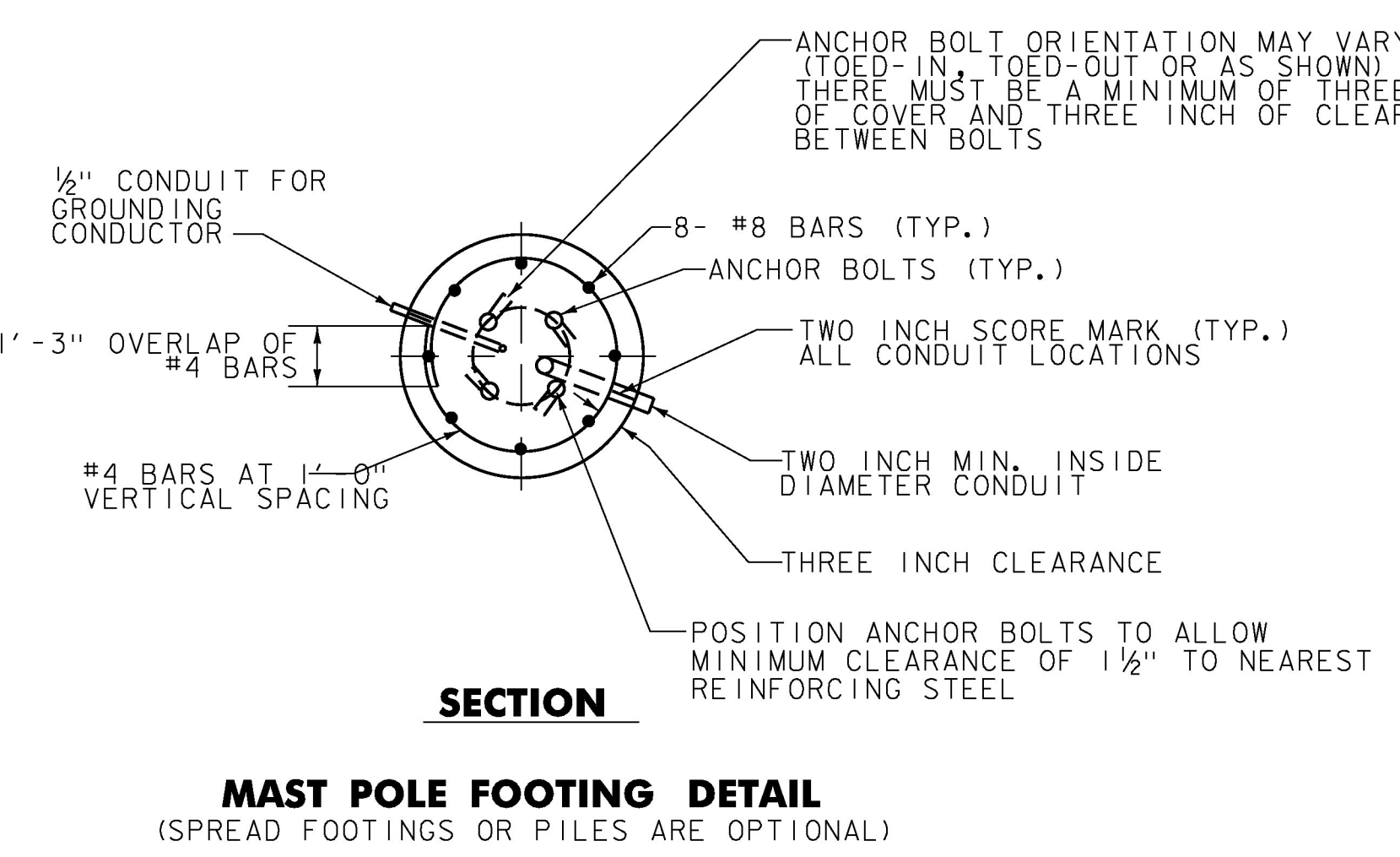
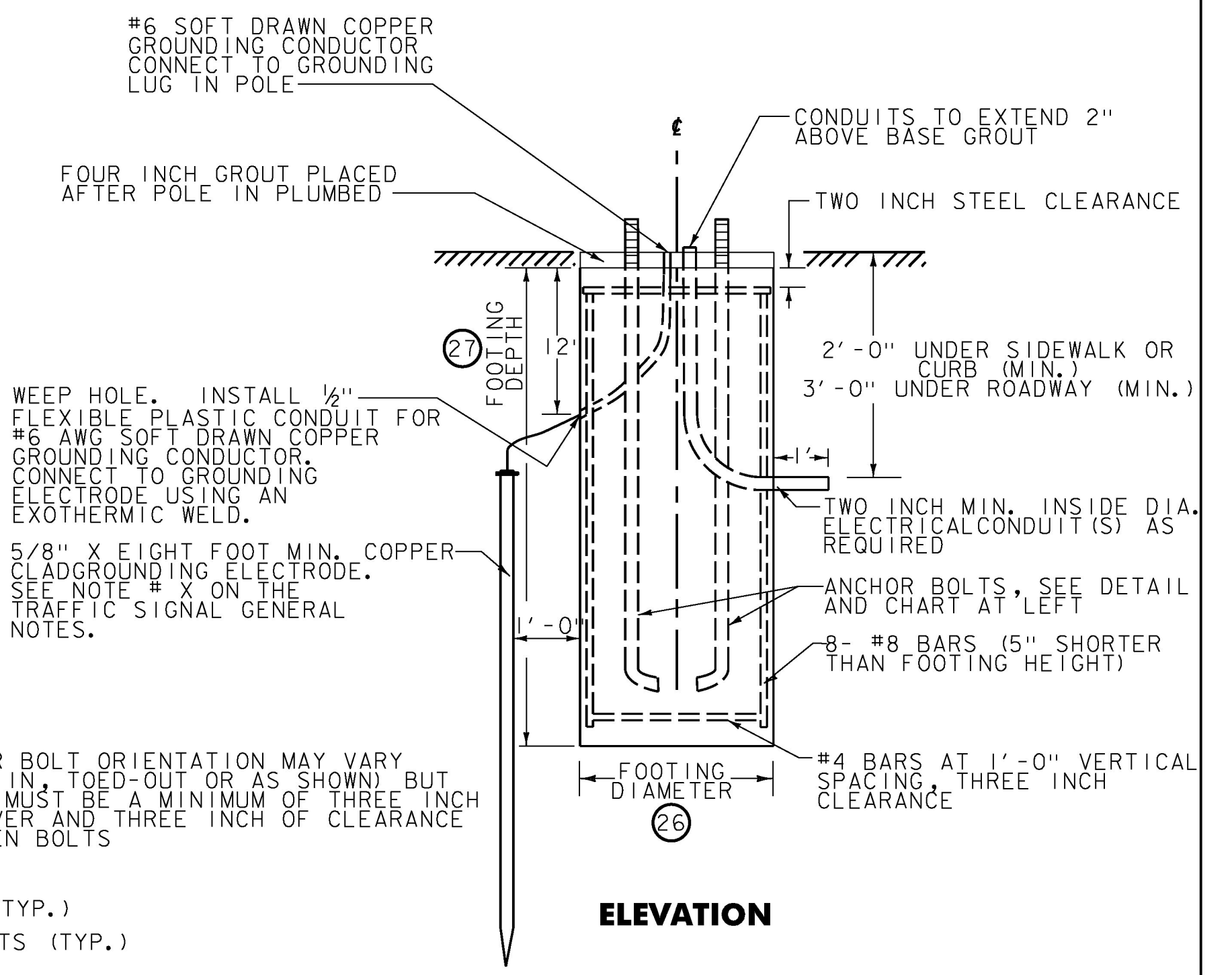
4" X 4" X 1" PLATE

1 1/4" - 1 3/4" BOLT

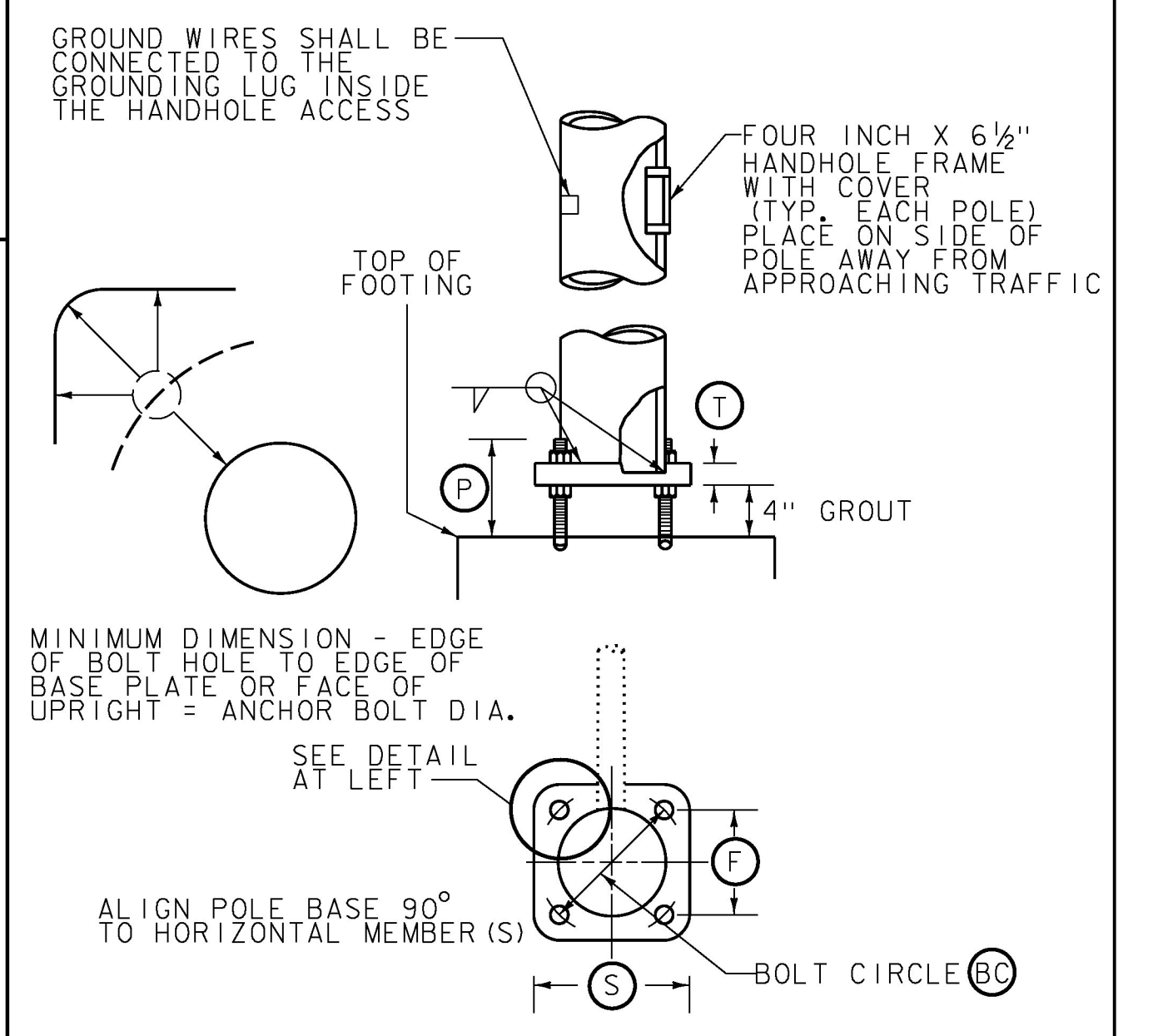
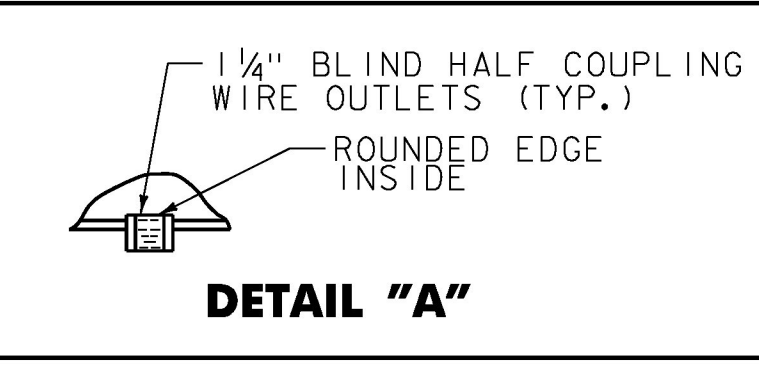
INTERRUPTED THREADS

2" ANCHOR BOLT ONLY

**ANCHOR BOLT DETAIL**



- NOTES**
- SEE TRAFFIC SIGNAL GENERAL NOTES FOR ADDITIONAL INFORMATION.
  - MANUFACTURER TO DETERMINE TYPE OF STRUCTURE REQUIRED.
  - MONOTUBES SHALL NOT BE USED FOR SIGNS OVER 10' HIGH.
  - MINIMUM CLEARANCE FROM SIGNS TO ANY TRAVEL LANE SHALL BE 17'.
  - CONTRACTOR SHALL VERIFY ALL GROUND ELEVATIONS.
  - LUMINAIRES, ALL ASSOCIATED EQUIPMENT AND LABOR TO INSTALL SHALL BE PAID FOR UNDER CONTRACT ITEM NOS. 679.45, 679.47 AND 679.50.



**STRUCTURE DIMENSIONS**

POLE TYPE	POLE DATA							ARM DATA												LIGHTING DATA					FOOTING DATA		BASE PLATE / BOLT DATA									
	(1)	(2)	(3)	(4)	(5)	(6)	(7)	(8)	(9)	(10)	(11)	(12)	(13)	(14)	(15)	(16)	(17)	(18)	(19)	(20)	(21)	(22)	(23)	(24)	(25)	(26)	(27)	(28)	(29)	(30)	(F)	(S)	(T)	(P)	ANCHOR BOLT SIZE	
U. S. ROUTE 2 @ NORTH BROWNELL ROAD AND SOUTH BROWNELL ROAD																																				
MAP 1	B	20 <sup>#27</sup>	17.0"	0.25				35'	55'	83°				11"	7 ga			14"	0.25							13'	12'	30'			46"	21"	27"		1.5"	
MAP 2	A	22'	20"	12.5"	5 ga			35'						11"	7 ga												42"	16"	21"						1.0"	
MAP 3	A	18'	17'	12.0"	7 ga			30'						10"	7 ga												42"	16"	20"						1.0"	
MAP 4																																				
U. S. ROUTE 2 @ BLAIR PARK ROAD AND HARVEST LANE																																				
MAP 1	B	20 <sup>#27</sup>	13.0"	5 ga				40'						11"	7 ga											9'	12'	30'			42"	16"	21"		1.0"	
MAP 2	B	20 <sup>#27</sup>	12.5"	5 ga				30'						10"	7 ga											9'	12'	30'			42"	16"	21"		1.0"	
MAP 3	B	20 <sup>#27</sup>	12.5"	5 ga				30'						10"	7 ga											9'	12'	30'			42"	16"	21"		1.0"	
MAP 4	B	20 <sup>#27</sup>	13.0"	5 ga				35'						11"	7 ga											9'	10'	30'			42"	16"	21"		1.0"	

MAN = TO BE DETERMINED BY MANUFACTURER  
 \* SEE TRAFFIC SIGNAL LAYOUT SHEETS

REPLACES SHEET #119

REVISÉ 6/27/17

PROJECT NAME:	SOUTH BURLINGTON-WILLISTON
PROJECT NUMBER:	NH 2944(I)
FILE NAME:	ppms/Section/-----,dgn
DESIGNED BY:	K. RECORD
MAST ARM, POLE & FOOTING DETAILS	
PLOT DATE:	6/27/2017
DRAWN BY:	K. RECORD
CHECKED BY:	M. LACROIX
SHEET	119R OF 249