

TRAFFIC CONTROL SIGNAL SYSTEM, INTERSECTION (U.S. ROUTE 2 @ NORTH BROWNELL ROAD AND SOUTH BROWNELL ROAD), SEE LIST OF MAJOR EQUIPMENT, ON SHEET # 111R

CONSTRUCT MAST ARM POLES
 STA. 36+47 31' LT (MAP-3)
 STA. 36+55 26' RT (MAP-2)
 STA. 37+27 36' LT (MAP-1)

CONSTRUCT CONTROLLER CABINET (GROUND MOUNTED)
 STA. 37+19 LT

WIRED CONDUIT (2") (SCH 80)
 SEE CONDUIT SCHEDULE, ON SHEET # 111R

ELECTRICAL CONDUIT (2") (SCH 80)
 SEE CONDUIT SCHEDULE, ON SHEET # 111R

SPECIAL PROVISION (JUNCTION BOX, HEAVY DUTY)
 STA. 36+52 23' RT (JB7) 36+86 RT (JB-9) NEW
 STA. 36+54 31' LT (JB6) 36+78 RT (JB-10) NEW
 STA. 36+59 47' LT (JB5) 36+68 RT (JB-11) NEW
 STA. 37+05 54' LT (JB4)
 STA. 37+45 27' LT (JB8)

STREET LIGHT ASSEMBLY
 STA. 36+68 43' RT (SL-2) 10'

BRACKET ARM
 STA. 36+57 LT (SL-3) 6' *
 STA. 37+27 6 LT (SL-1) 12'

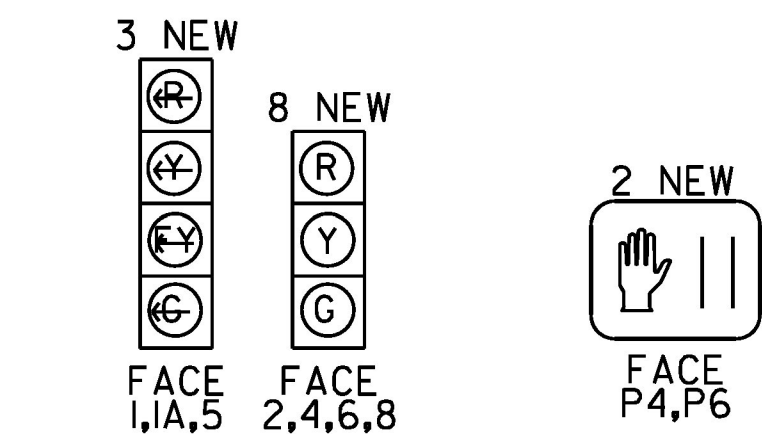
LUMINAIRE
 STA. 36+57 LT (SL-3)
 STA. 37+27 6 LT (SL-1)

REMOVE EXISTING STREET LIGHT ASSEMBLY
 STA. 36+57 34' LT
 STA. 36+68 43' RT
 STA. 37+24 38' LT

SPECIAL PROVISION (HORIZONTAL DIRECTIONAL DRILLING) (12" CASING PIPE)
 STA. 36+52 RT TO 36+54 LT (53') 36+61 LT TO 36+86 RT
 STA. 36+59 LT TO 37+05 LT (46')

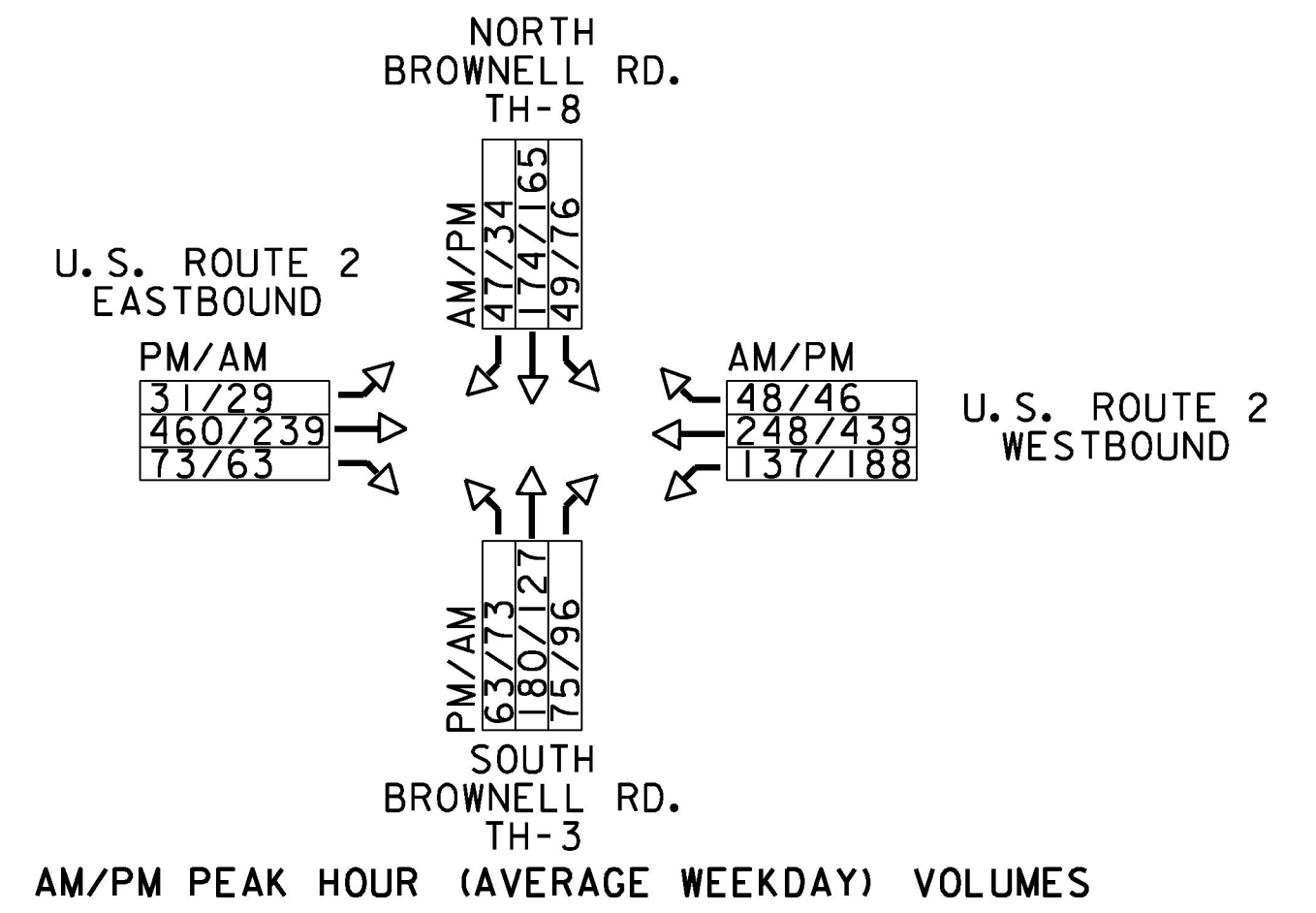
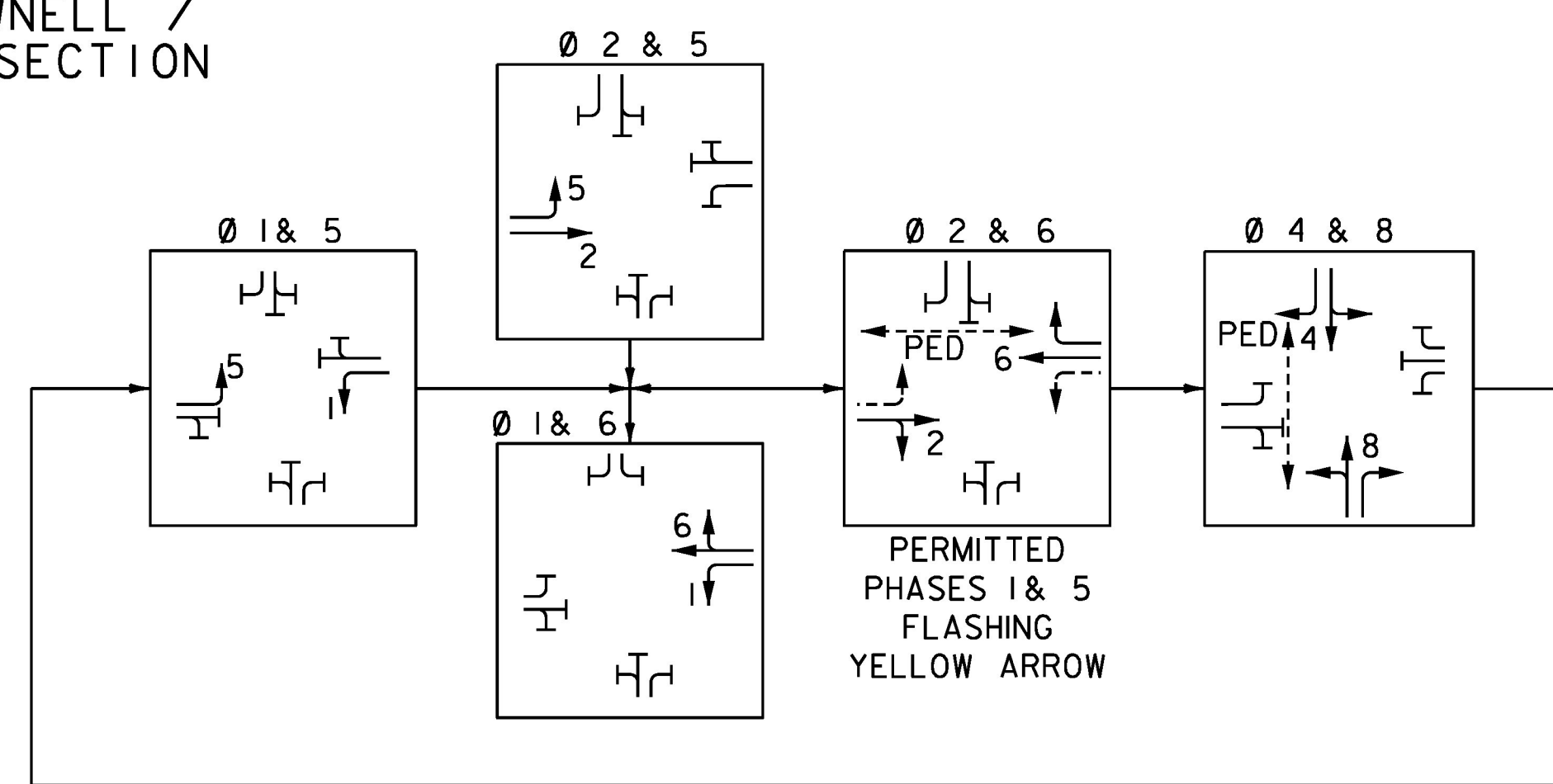
REMOVAL OF EXISTING TRAFFIC CONTROL SIGNAL SYSTEM
 U.S. ROUTE 2 AT NORTH BROWNELL ROAD AND SOUTH BROWNELL ROAD.

U.S. ROUTE 2 / NORTH BROWNELL / SOUTH BROWNELL ROAD INTERSECTION
 SIGNAL FACE ARRANGEMENT



NOTE: ALL NEW 12" LED LENSES WITH 5" LOUVERED BACKPLATES, 2" RETROREFLECTIVE BORDERS AND VISORS

PHASING DIAGRAM



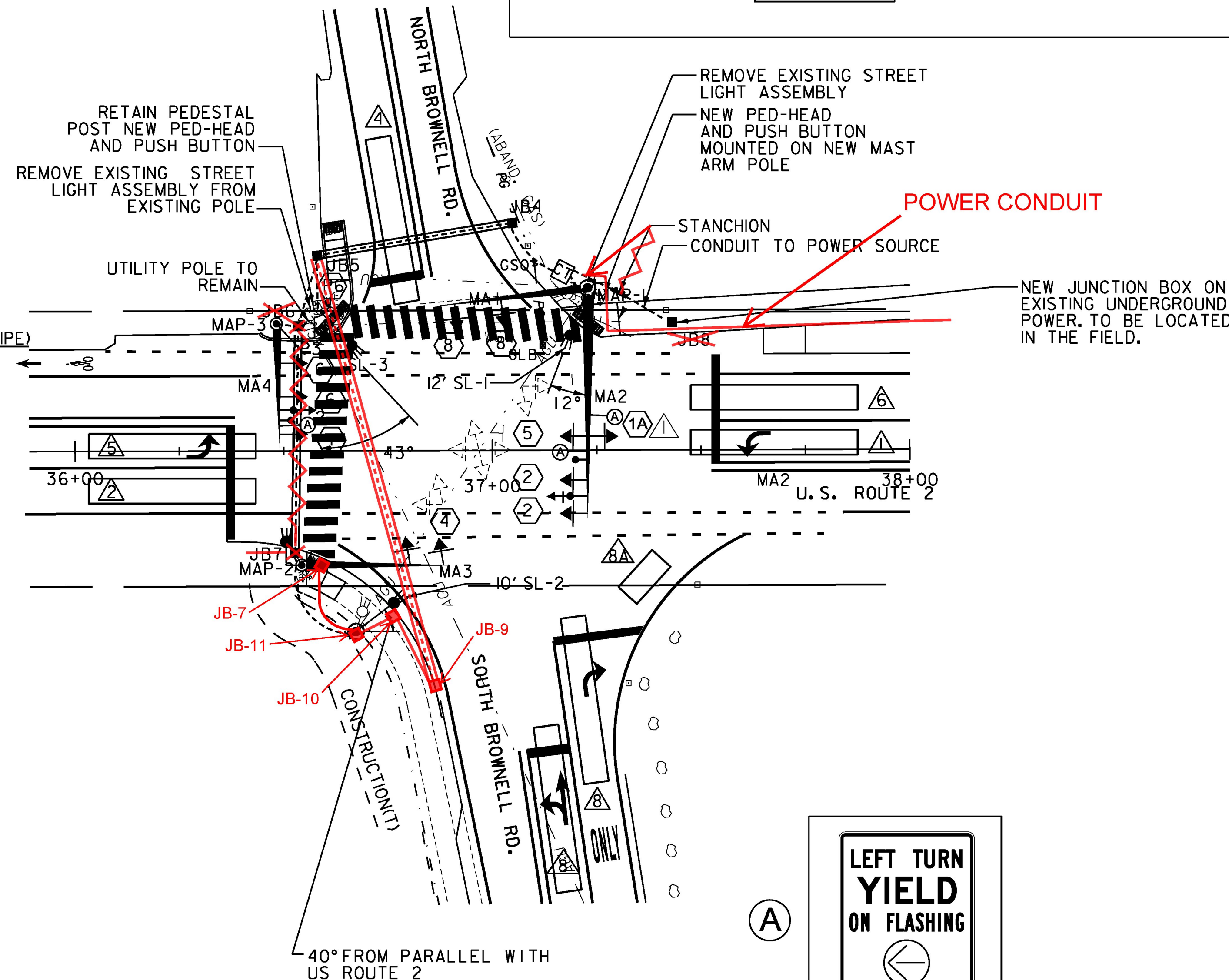
NOTES:

- TRAFFIC ITEMS LISTED APPROXIMATE LOCATIONS AND MAY BE MODIFIED BY THE ENGINEER IN THE FIELD TO ENSURE CONFORMANCE WITH THE MUTCD AND VTRANS STANDARD DRAWINGS.
- UNLESS OTHERWISE NOTED, THE REMOVAL OF ALL EXISTING TRAFFIC SIGNAL EQUIPMENT THAT SHALL NOT BE REINSTALLED SHALL BECOME THE PROPERTY OF THE CONTRACTOR. WORK REQUIRED TO PERFORM THIS ACTIVITY WILL BE PAID FOR UNDER CONTRACT ITEM 678.45 REMOVAL OF EXISTING TRAFFIC CONTROL SIGNAL SYSTEM.
- REMOVAL OF EXISTING TRAFFIC CONTROL SIGNAL SYSTEM SHALL NOT OCCUR UNTIL THE PROPOSED SYSTEM IS CONSTRUCTED AND OPERATIONAL.
- FOR A LIST OF MAJOR EQUIPMENT CONDUIT SCHEDULE, AND CONTROLLER DATA, SEE SHEET III.
- ALL REMOVED STREET LIGHTING SHALL BE SALVAGED TO THE DISTRICT 5 SIGNAL TECHNICIAN. REMOVAL OF EXISTING STREET LIGHTING SYSTEM WILL BE PAID FOR UNDER ITEM 679.24 REMOVE STREET LIGHT ASSEMBLY.
- ALL REMOVED STRAIN POLES SHALL BE DISPOSED OF BY THE CONTRACTOR.
- STOP BAR DETECTION SYSTEM SHALL BE OPERATIONAL PRIOR TO CUTTING EXISTING LOOPS. EXISTING VEHICLE DETECTOR LOOPS SHALL BE CUT AT THE CURB LINE PRIOR TO COLD PLANING AS DIRECTED BY THE ENGINEER. PAYMENT WILL BE CONSIDERED INCIDENTAL TO ITEM 678.45 REMOVAL OF EXISTING TRAFFIC CONTROL SIGNAL SYSTEM.
- RIGHT OF WAY IS APPROXIMATE.
- UNDERGROUND UTILITIES ARE APPROXIMATE AND SHALL BE VERIFIED BY THE CONTRACTOR.
- EXISTING SIGNAL INTERCONNECT CABLE EXISTS BETWEEN THE BROWNELL ROAD INTERSECTION AND THE HARVEST LANE/BLAIR PARK ROAD INTERSECTION. CONTRACTOR SHALL LOCATE INTERCONNECTING CABLE AND PROTECT DURING CONSTRUCTION. ALSO, INTERCONNECTION OF NEW SIGNAL EQUIPMENT BETWEEN THESE INTERSECTIONS SHALL BE REESTABLISHED. THIS WORK IS PAID FOR UNDER ITEM 678.15 TRAFFIC CONTROL SIGNAL SYSTEM, INTERSECTION (U.S. ROUTE 2 @ NORTH BROWNELL ROAD AND SOUTH BROWNELL ROAD).
- CONTRACTOR TO COORDINATE WITH GMP TO RELOCATE OVERHEAD SERVICE TO NEW SLEEVE UNDER NORTH BROWNELL ROAD. SERVICE MUST REMAIN ACTIVE UNTIL SWITCH OVER CAN OCCUR. COORDINATION EFFORT WILL BE CONSIDERED INCIDENTAL TO ITEM 678.45 REMOVAL OF EXISTING TRAFFIC CONTROL SYSTEM.

REPLACES SHEET #110

PROJECT NAME:	SOUTH BURLINGTON-WILLISTON
PROJECT NUMBER:	NH 2944(I)
FILE NAME:	ppms*/Section/-----,dgn
PROJECT LEADER:	M. LACROIX
DESIGNED BY:	K. RECORD
TRAFFIC SIGNAL SYSTEMS SHEET I	
PLOT DATE:	6/27/2017
DRAWN BY:	K. RECORD
CHECKED BY:	M. LACROIX
SHEET	110R OF 249

LEGEND		
EXISTING	NEW	DESCRIPTION
○	●	UTILITY POLE
○	●	LUMINAIRE
○	●	LIGHT POLE
○	●	STRAIN POLE/CANTILEVER POLE
□	■	CONTROLLER CABINET
□	■	PULLBOX/JUNCTION BOX
△	▲	PEDESTRIAN SIGNAL HEAD
△	▲	SIGNAL HEAD
△	▲	SIGNAL HEAD WITH LOUVERED PLATE
---	---	CONDUIT (SIGNAL)
⋯	⋯	VEHICLE LOOPS
⋯	⋯	VEHICLE DETECTION AREA
⊕	⊕	PEDESTAL POST/LIGHTING POLE
⋯	⋯	CANTILEVER
⊠	⊠	DRAINAGE STRUCTURE
⊕	⊕	VEHICLE DETECTOR
---	---	SLEEVE
⊕	⊕	PREEMPT OPTICAL DETECTOR
⊕	⊕	PREEMPTION STROBE
+	+	PEDESTRIAN PUSHBUTTON ASSEMBLY
⋯	⋯	POWER DROP STANCHION
---	---	ELECTRICAL WIRING
⊥	⊥	L.E.D REGULATORY SIGN



* CONTRACTOR TO COORDINATE WITH UTILITY COMPANY FOR INSTALLATION OF BRACKET ARM POLE AND LUMINAIRE ON EXISTING UTILITY POLE.

SEE TRAFFIC SIGN DETAIL SHEETS

△ REVISED 6/27/17

