

RELOCATE MAILBOX, SINGLE SUPPORT  
 STA. 40+45, RT  
 STA. 41+21, RT  
 STA. 42+57, LT  
 STA. 43+30, RT  
 STA. 43+38, LT  
 STA. 43+73, LT

DURABLE & TEMPORARY 4 INCH WHITE LINE  
 (ALL LINES WILL INCLUDE EDGE LINE BREAKS  
 AND RADI FOR SIDE ROADS)  
 STA. 40+00 TO 45+00, EDGE LINE LT & RT  
 STA. 40+00 TO 41+55, DOTTED LT

DURABLE & TEMPORARY 4 INCH YELLOW LINE  
 (ALL LINES WILL INCLUDE C BREAKS FOR SIDE ROADS)  
 STA. 40+00 TO 40+20, SOLID LT & RT  
 STA. 40+20 TO 43+40, DOUBLE SOLID LT & RT  
 STA. 43+40 TO 45+00, SOLID LT & RT

DURABLE & TEMPORARY 8 INCH YELLOW LINE  
 STA. 40+20 TO 43+40, LT & RT (DIAGONALS)  
 SEE SHEET 27

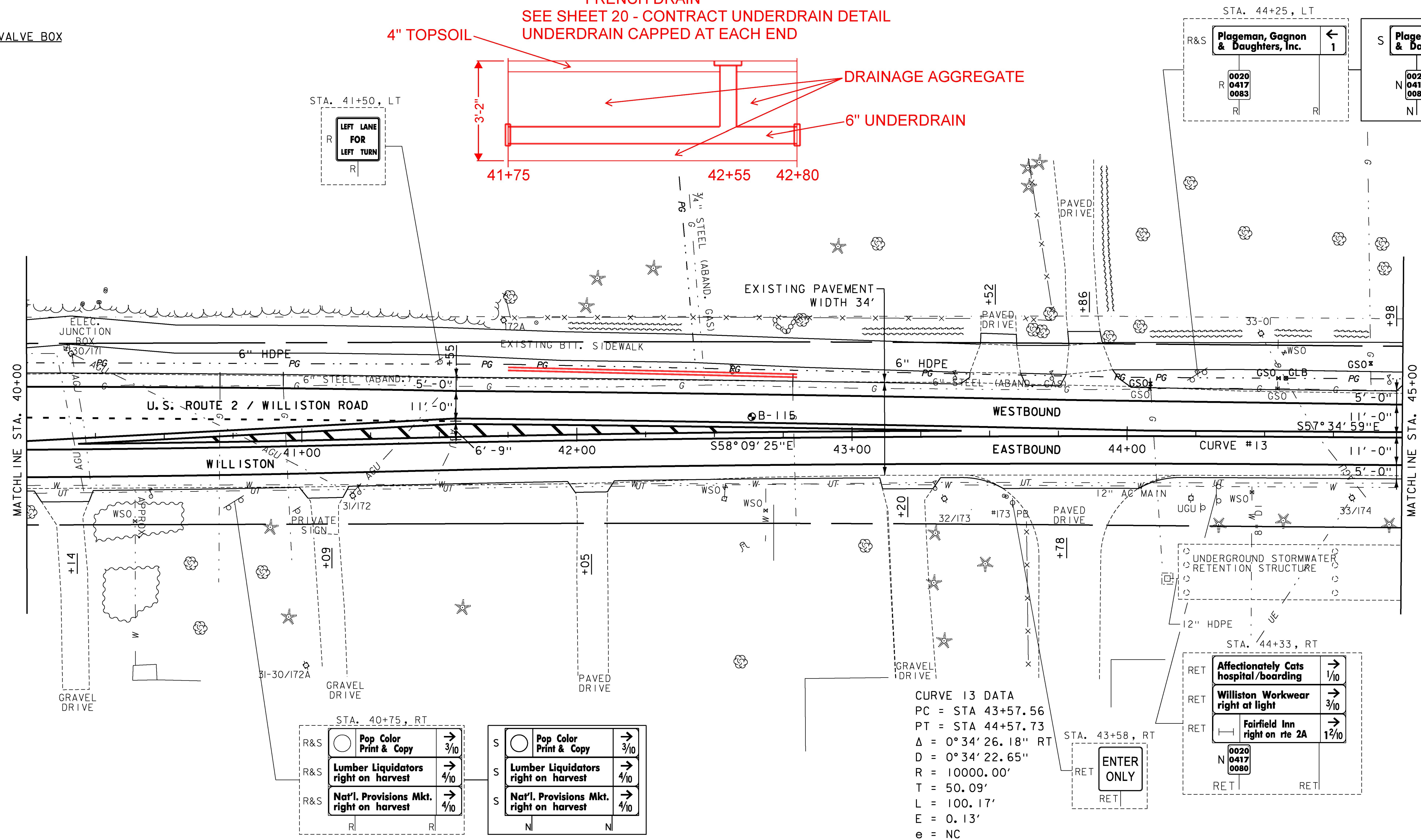
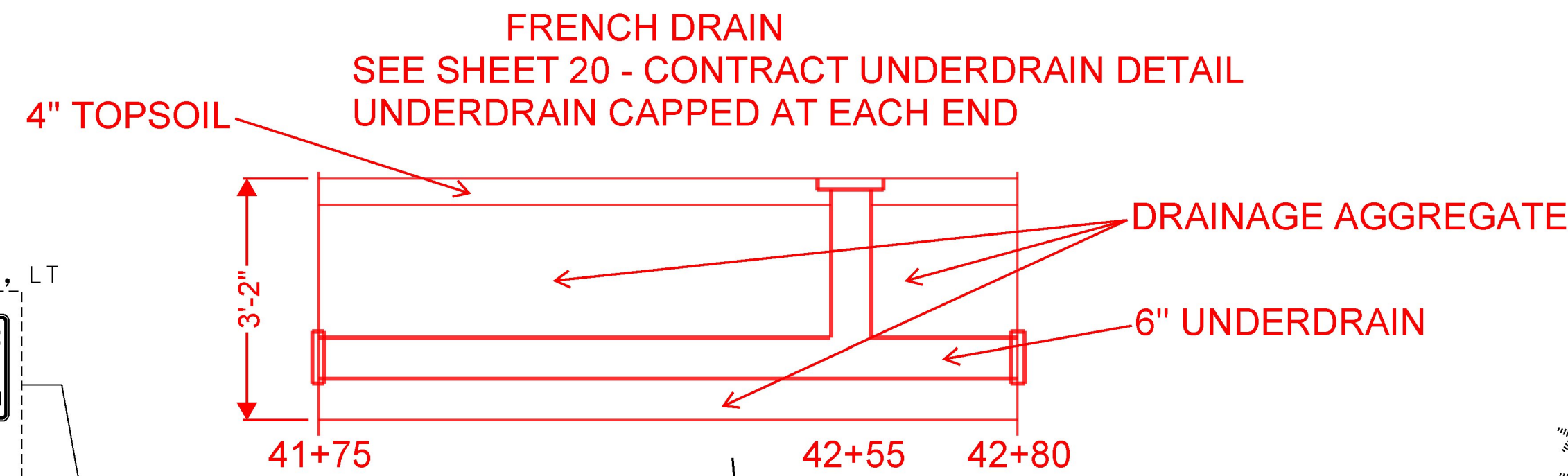
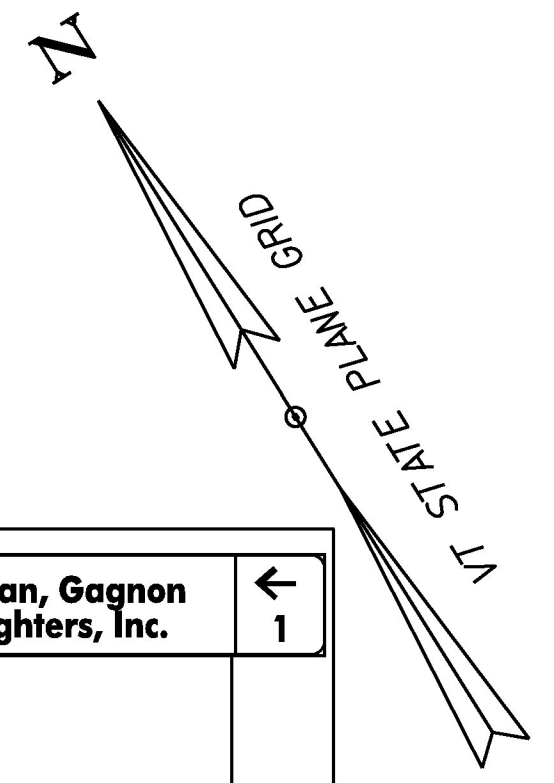
SPECIAL PROVISION (BITUMINOUS  
 CONCRETE PAVEMENT, SMALL QUANTITY)  
 STA. 40+00 TO 45+00, LT (PATH)

REMOVING SIGNS  
 AS SHOWN - 6

ERECTING SALVAGED  
 SIGNS (NON-PARTICIPATING)  
 AS SHOWN - 4

RELOCATE MAILBOX, MULTIPLE SUPPORT  
 STA. 44+95, LT

ADJUST ELEVATION OF VALVE BOX  
 SEE SHEET 21



**CURVE 13 DATA**  
 PC = STA 43+57.56  
 PT = STA 44+57.73  
 $\Delta = 0^\circ 34' 26.18''$  RT  
 D =  $0^\circ 34' 22.65''$   
 R = 10000.00'  
 T = 50.09'  
 L = 100.17'  
 E = 0.13'  
 e = NC

STA. 40+75, RT			
R&S	Pop Color Print & Copy	→	3/10
R&S	Lumber Liquidators right on harvest	→	4/10
R&S	Nat'l. Provisions Mkt. right on harvest	→	4/10

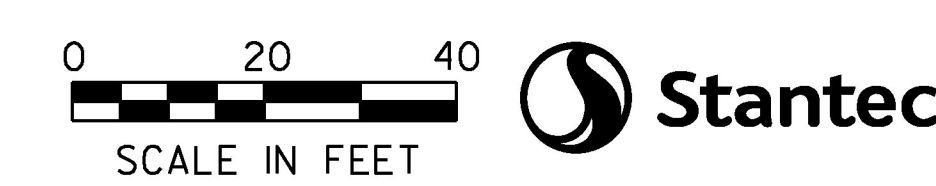
STA. 44+25, LT			
R	0020 0417 0083	←	1
R			

STA. 44+33, RT			
RET	Affectionately Cats hospital/boarding	→	1/10
RET	Williston Workwear right at light	→	3/10
RET	Fairfield Inn right on rte 2A	→	12/10

- NOTES:**
- FOR LEGENDS, SEE SHEETS 3-4.
  - ALL EXISTING SIGNS NOT SHOWN ON THE PLANS SHALL BE RETAINED.

SOIL BORING DATA			
BORING#	DEPTH (FT.)	PCC	COMMENTS
B-115	5.0'	YES	



PROJECT NAME: SOUTH BURLINGTON-WILLISTON  
 PROJECT NUMBER: NH 2944(I)  
 FILE NAME: zlid340bdr.dgn  
 PROJECT LEADER: G. EDWARDS  
 DESIGNED BY: D. DRAPER  
 LAYOUT SHEET 16

PLOT DATE: 2/15/2017  
 DRAWN BY: D. DRAPER  
 CHECKED BY: J. LITTLE  
 SHEET 66 OF 249