

CHANGING ELEVATION OF Dis. CBs OR MHs
SEE SHEET 21

REHAB.
Dis. CBs OR MHs, CLASS I OR II
SEE SHEET 21

CAST-IN-PLACE CONCRETE CURB, TYPE B
STA. 147+00 TO 147+07, LT 147+03 LT
STA. 148+40 TO 148+82, LT (PALMER COURT)
STA. 148+62 TO 149+11, RT (GREGORY DRIVE)
STA. 149+08 TO 149+63, LT (PALMER COURT)
STA. 149+41 TO 149+58, RT (GREGORY DRIVE)
STA. 149+11 RT (GREGORY DRIVE ADDITIONAL)

BITUMINOUS CONCRETE GUTTERS AND TRAFFIC ISLANDS
STA. 147+00 TO 147+07, LT

REMOVAL OF EXISTING CURB

STA. 147+00 TO 148+82, LT 147+00 TO 148+25 LT
STA. 148+62 TO 149+11, RT 148+25 TO 148+76 RT
STA. 149+08 TO 149+63, LT 149+08 TO 149+63 RT
STA. 149+41 TO 149+58, RT 149+38 LT

BOX BEAM GUARDRAIL

STA. 149+47.0 TO 151+00, LT

REMOVAL AND DISPOSAL OF GUARDRAIL

STA. 149+63 TO 151+00, LT

DURABLE & TEMPORARY 4 INCH YELLOW LINE
(ALL LINES WILL INCLUDE $\frac{1}{2}$ BREAKS FOR SIDE ROADS)
STA. 147+00 TO 151+00, SOLID LT & RT
STA. 149+07, DOUBLE SOLID LT (PALMER CT. TH-185)
STA. 149+22, DOUBLE SOLID RT (GREGORY DR. TH-184)

DURABLE & TEMPORARY 24 INCH STOP BAR
STA. 149+07, LT (PALMER CT. TH-185)
STA. 149+22, LT (GREGORY DR. TH-184)

DURABLE LETTER OR SYMBOL, TYPE D TAPE
STA. 147+79, CL ARROW
STA. 148+09, RT BIKE LANE SYMBOL
STA. 148+21, RT BIKE LANE ARROW
STA. 148+25, LT BIKE LANE ARROW
STA. 148+25, CL "ONLY"
STA. 148+37, LT BIKE LANE SYMBOL
STA. 148+71, CL ARROW
STA. 149+07, LT "STOP" (PALMER CT. TH-185)
STA. 149+22, RT "STOP" (GREGORY DR. TH-184)
STA. 149+55, LT ARROW
STA. 149+94, RT BIKE LANE SYMBOL
STA. 149+97, LT ARROW
STA. 150+06, RT BIKE LANE ARROW

TEMPORARY LETTER OR SYMBOL, PAINT
STA. 147+79, CL ARROW
STA. 148+09, RT BIKE LANE SYMBOL
STA. 148+21, RT BIKE LANE ARROW
STA. 148+25, LT BIKE LANE ARROW
STA. 148+37, LT BIKE LANE SYMBOL
STA. 148+71, CL ARROW
STA. 149+07, LT "STOP" (PALMER CT. TH-185)
STA. 149+22, RT "STOP" (GREGORY DR. TH-184)
STA. 149+55, LT ARROW
STA. 149+94, RT BIKE LANE SYMBOL
STA. 149+97, LT ARROW
STA. 150+06, RT BIKE LANE ARROW

REMOVING SIGNS
AS SHOWN - IO

ERECTING SALVAGED SIGNS
AS SHOWN - I

SPECIAL PROVISION (GREEN PAVEMENT MARKINGS - BICYCLE LANE)
STA. 148+40 TO 149+90, BIKE LANE LT
STA. 148+65 TO 149+58, BIKE LANE RT
SEE SHEET 27

DURABLE & TEMPORARY 4 INCH WHITE LINE
(ALL LINES WILL INCLUDE EDGE LINE BREAKS AND RADII FOR SIDE ROADS)
STA. 147+00 TO 148+65, EDGE LINE RT
STA. 147+00 TO 148+40, EDGE LINE LT
STA. 147+00 TO 147+75, DOTTED RT
STA. 147+75 TO 148+75, SOLID RT (LANE LINE)
STA. 148+40 TO 149+96, DOTTED LANE LINE LT
STA. 148+40 TO 149+90, DOTTED LANE LINE LT
STA. 148+65 TO 149+70, DOTTED LANE LINE RT
STA. 148+65 TO 149+58, DOTTED LANE LINE RT
STA. 149+07, SOLID LT (EDGELINES, PALMER CT. TH-185)
STA. 149+22, SOLID LT (EDGELINES, GREGORY DR. TH-184)
STA. 149+51 TO 150+01, SOLID LT (LANE LINE)
STA. 149+70 TO 151+00, EDGE LINE RT
STA. 149+96 TO 151+00, DOTTED LT
STA. 150+01 TO 151+00, DOTTED LT
STA. 150+73 TO 151+00, BIKE LANE LINE RT
STA. 150+73 TO 151+00, HATCH BUFFER RT
STA. 150+82 TO 151+00, BIKE LANE LINE LT
STA. 150+82 TO 151+00, HATCH BUFFER LT

SPECIAL PROVISION (ADJUST ELEVATION OF VALVE BOX)
SEE SHEET 21

EXISTING 12" RCP WAS USED WITH A FERNCO COUPLER; AS THE STRUCTURE INLET / PIPE ANGLE WAS SLIGHTLY OFF. OUTLET PIPE WAS NOT DAMAGED DURING INSTALL AND IS 18" RCP AT STRUCTURE (NOT 18" CGMP AS DEPICTED ON PLAN).

UD-22
STA. 147+32 LT TO 147+35 RT
CONSTRUCT 6 INCH UNDERDRAIN PIPE
SEE SHEET 20 FOR DETAILS & ASSOCIATED QUANTITIES

UD-23
STA. 148+55 LT/CL
CONSTRUCT 6 INCH UNDERDRAIN PIPE
SEE SHEET 20 FOR DETAILS & ASSOCIATED QUANTITIES

5
STA. 149+38, LT
REMOVE EXISTING DROP INLET
CONSTRUCT NEW PRECAST REINFORCED CONCRETE DI WITH CAST IRON GRATE
CONNECT TO EXISTING 15" CGMP, INV. IN 314.52
CONNECT TO EXISTING 15" CGMP, INV. OUT 314.43

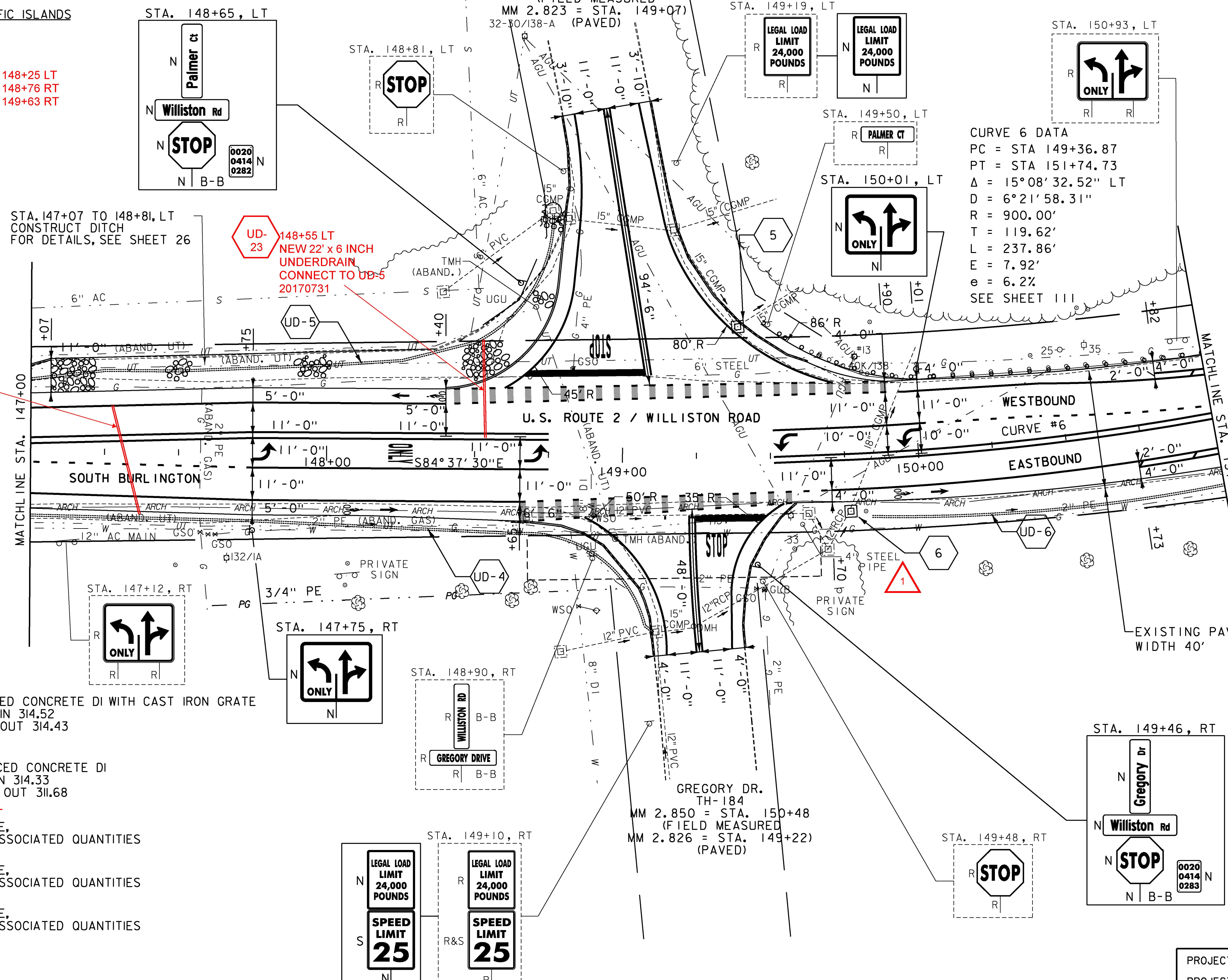
6
STA. 149+77, RT
REMOVE EXISTING DROP INLET
CONSTRUCT NEW PRECAST REINFORCED CONCRETE DI
CONNECT TO EXISTING 12" RCP, INV. IN 314.33
CONNECT TO EXISTING 18" CGMP, INV. OUT 311.68

UD-4
STA. 147+00 TO 149+10, RT 148+68, RT
CONSTRUCT 6 INCH UNDERDRAIN PIPE,
SEE SHEET 20 FOR DETAILS AND ASSOCIATED QUANTITIES

UD-5
STA. 147+00 TO 148+76, LT
CONSTRUCT 6 INCH UNDERDRAIN PIPE,
SEE SHEET 20 FOR DETAILS AND ASSOCIATED QUANTITIES

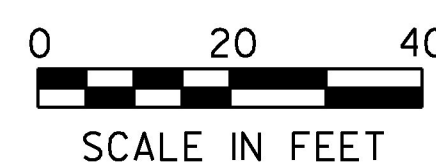
UD-6
STA. 149+84 TO 151+00, RT
CONSTRUCT 6 INCH UNDERDRAIN PIPE,
SEE SHEET 20 FOR DETAILS AND ASSOCIATED QUANTITIES

- NOTES:
- FOR LEGENDS, SEE SHEETS 3-4.
 - ALL EXISTING SIGNS NOT SHOWN ON THE PLANS SHALL BE RETAINED.
 - ALL WORK SHALL BE CONSTRUCTED WITHIN THE ROADWAY RIGHT OF WAY.



APPROXIMATE ENVIRONMENTALLY SENSITIVE LOCATIONS:

- | NO. | LIMITS | POS. | TYPE. |
|-----|--------------------------|------|-------|
| 1. | STA. 147+00 - 151+00, RT | | ARCH |



PROJECT NAME:	SOUTH BURLINGTON-WILLISTON
PROJECT NUMBER:	NH 2944(I)
FILE NAME:	zild340bdr.dgn
DESIGNED BY:	D. DRAPER
CHECKED BY:	J. LITTLE
LAYOUT SHEET 6	
PLOT DATE:	2/15/2017
DRAWN BY:	D. DRAPER
CHECKED BY:	J. LITTLE
SHEET 54 OF 249	