

CAST-IN-PLACE CONCRETE CURB, TYPE B  
STA. 143+21 TO 147+00, LT

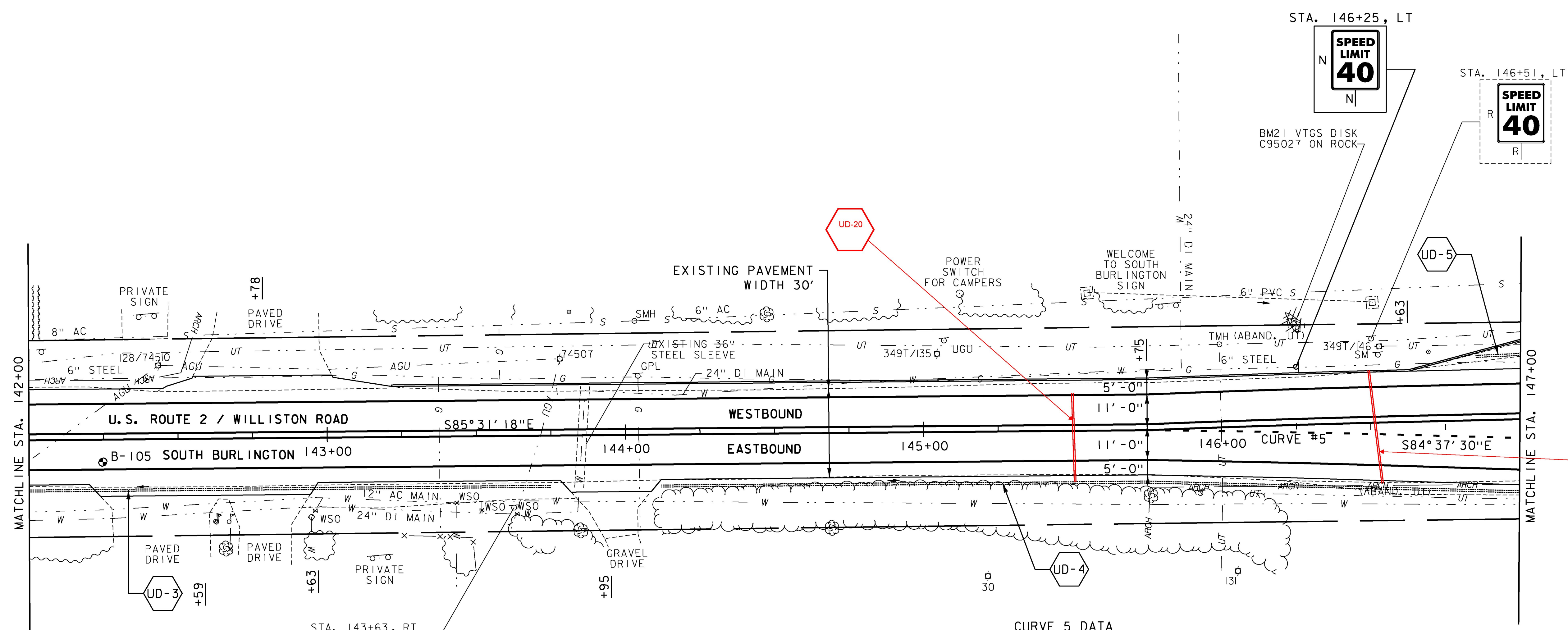
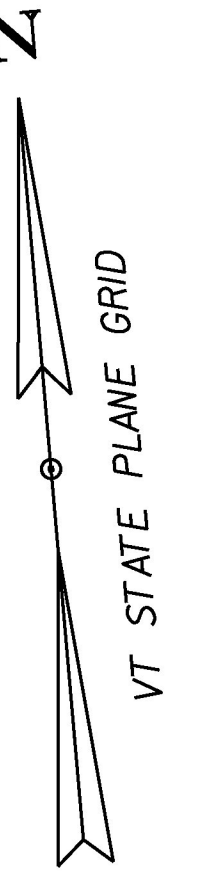
REMOVAL OF EXISTING CURB  
STA. 146+98 TO 147+00, LT

BITUMINOUS CONCRETE GUTTERS AND TRAFFIC ISLANDS  
STA. 146+63 TO 147+00, LT

DURABLE & TEMPORARY 4 INCH WHITE LINE  
(ALL LINES WILL INCLUDE EDGE LINE BREAKS  
AND RADI FOR SIDE ROADS)  
STA. 142+00 TO 147+00, EDGE LINE LT & RT  
STA. 145+75 TO 147+00, DOTTED RT

DURABLE & TEMPORARY 4 INCH YELLOW LINE  
(ALL LINES WILL INCLUDE  $\frac{1}{2}$  BREAKS FOR SIDE ROADS)  
STA. 142+00 TO 147+00, SOLID LT & RT

REMOVING SIGNS  
AS SHOWN - 2



CURVE 5 DATA  
PC = STA 145+79.72  
PT = STA 146+64.37  
 $\Delta = 0^\circ 53' 47.39''$  RT  
D =  $1^\circ 03' 32.66''$   
R = 5410.00'  
T = 42.33'  
L = 84.65'  
E = 0.17'  
e = NC

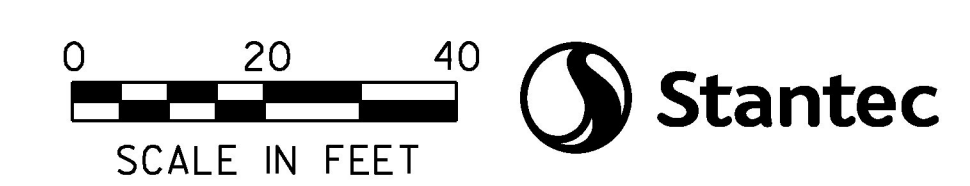
- UD-3 STA. 142+00 TO 143+75, RT  
CONSTRUCT 6 INCH UNDERDRAIN PIPE,  
SEE SHEET 20 FOR DETAILS AND ASSOCIATED QUANTITIES
- UD-4 STA. 144+12 TO 147+00, RT  
CONSTRUCT 6 INCH UNDERDRAIN PIPE,  
SEE SHEET 20 FOR DETAILS AND ASSOCIATED QUANTITIES
- UD-5 STA. 146+85 TO 147+00, LT  
CONSTRUCT 6 INCH UNDERDRAIN PIPE,  
SEE SHEET 20 FOR DETAILS AND ASSOCIATED QUANTITIES

- UD-20 STA. 145+50 LT/RT  
CONSTRUCT 6 INCH UNDERDRAIN PIPE  
SEE SHEET 20 FOR DETAILS & ASSOCIATED QUANTITIES
- UD-21 STA. 146+51 LT TO 146+54 RT  
CONSTRUCT 6 INCH UNDERDRAIN PIPE  
SEE SHEET 20 FOR DETAILS & ASSOCIATED QUANTITIES

APPROXIMATE ENVIRONMENTALLY SENSITIVE LOCATIONS:

1. STA. 142+00 - 142+58, LT ARCH
2. STA. 145+75 - 147+00, RT ARCH

SOIL BORING DATA			
BORING#	DEPTH (FT.)	PCC	COMMENTS
B-105	5.0'	YES	



PROJECT NAME: SOUTH BURLINGTON-WILLISTON	PLOT DATE: 2/15/2017
PROJECT NUMBER: NH 2944(I)	DRAWN BY: D. DRAPER
FILE NAME: zlid340bdr.dgn	CHECKED BY: J. LITTLE
DESIGNED BY: D. DRAPER	SHEET 53 OF 249
LAYOUT SHEET 5	

- NOTES:
1. FOR LEGENDS, SEE SHEETS 3-4.
  2. ALL EXISTING SIGNS NOT SHOWN ON THE PLANS SHALL BE RETAINED.