

GPS CONTROL POINTS

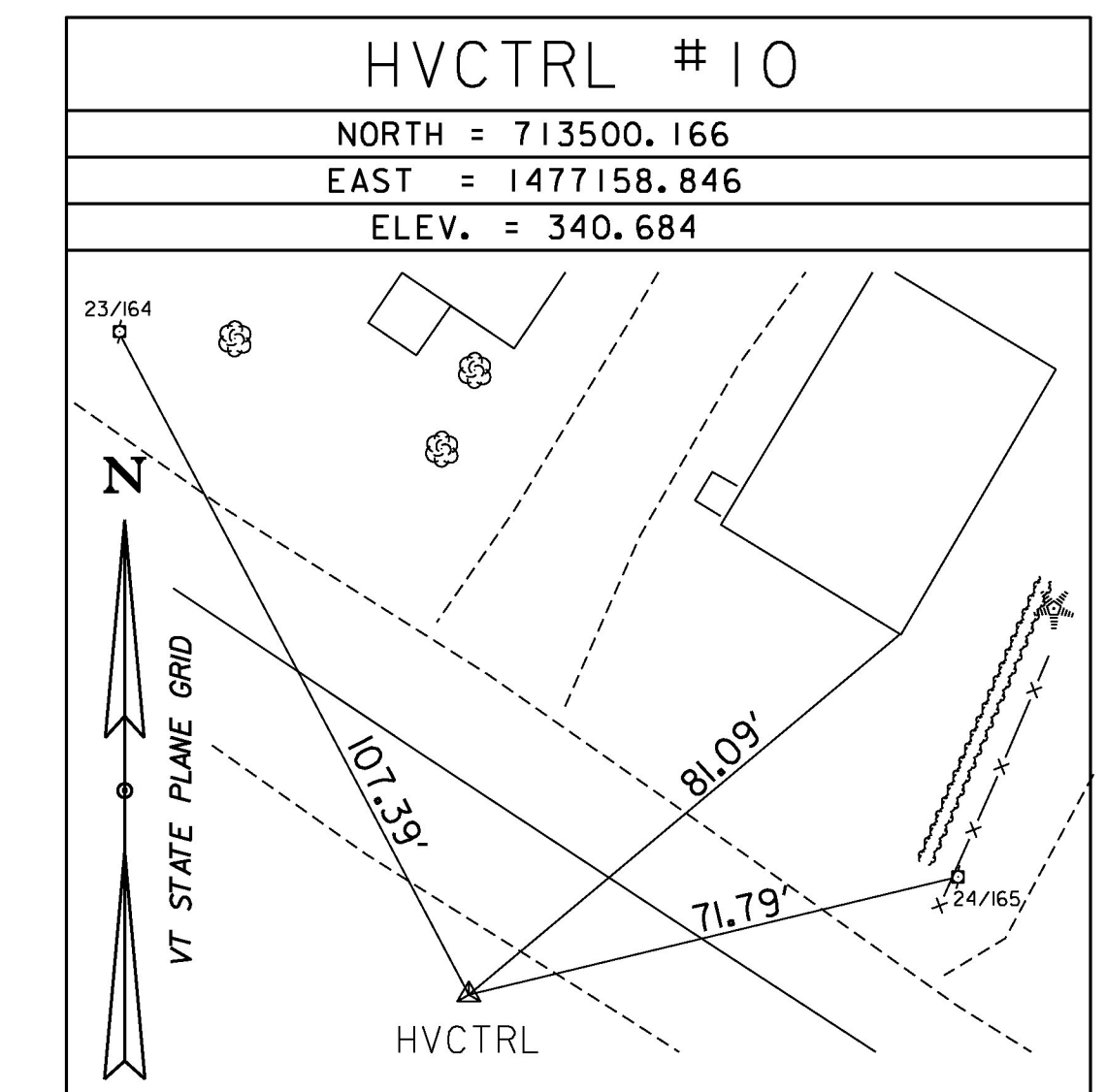
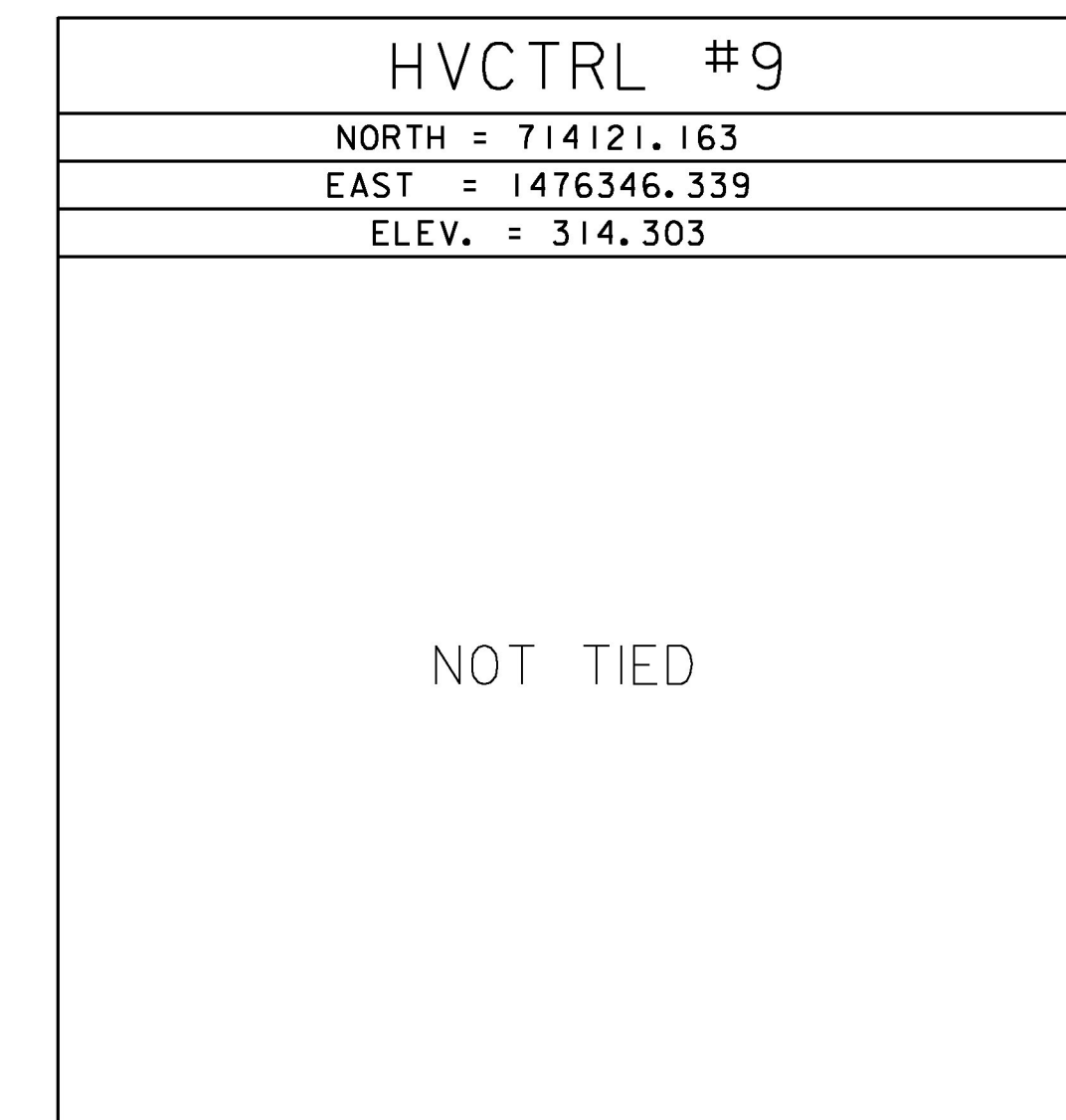
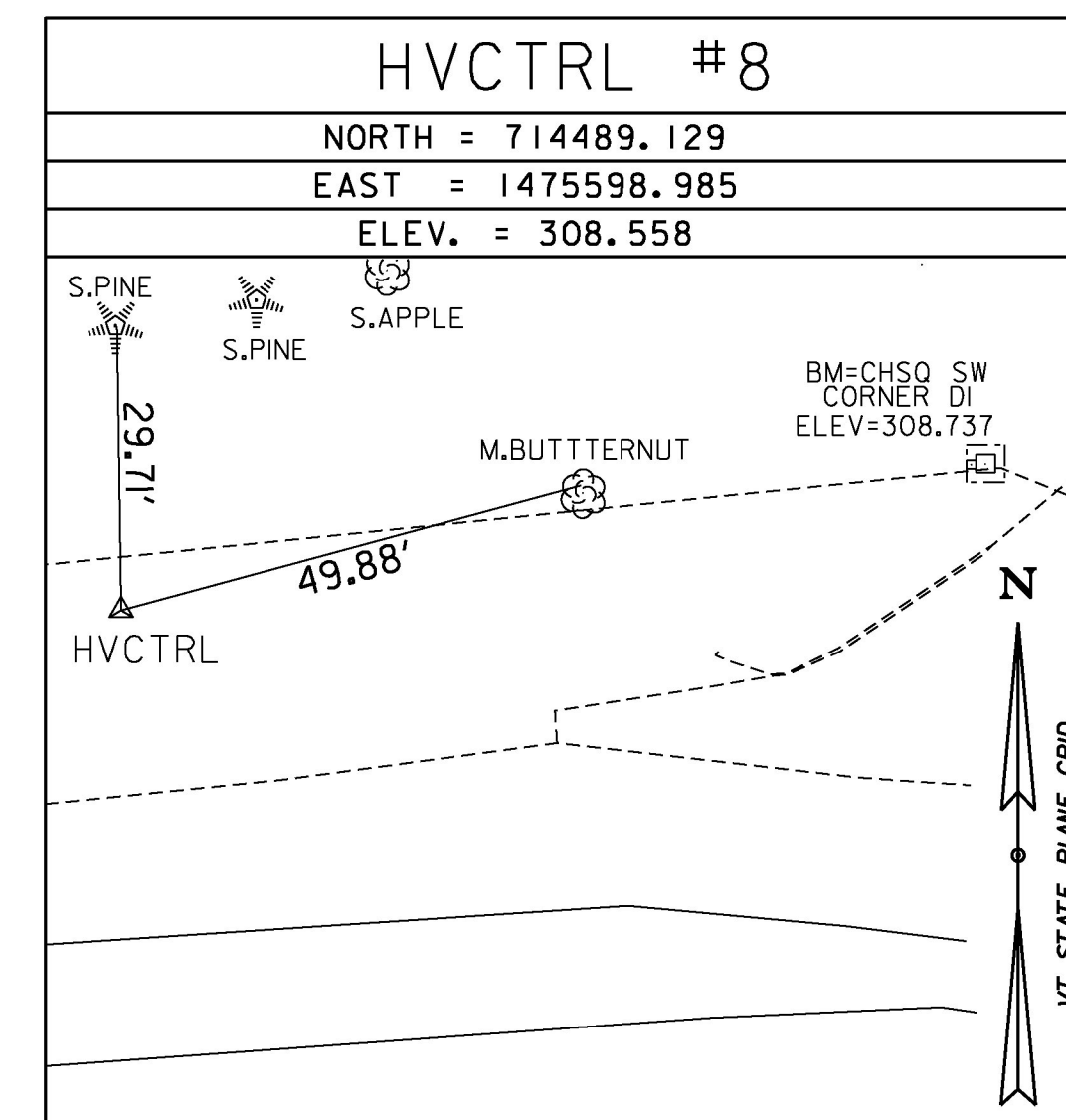
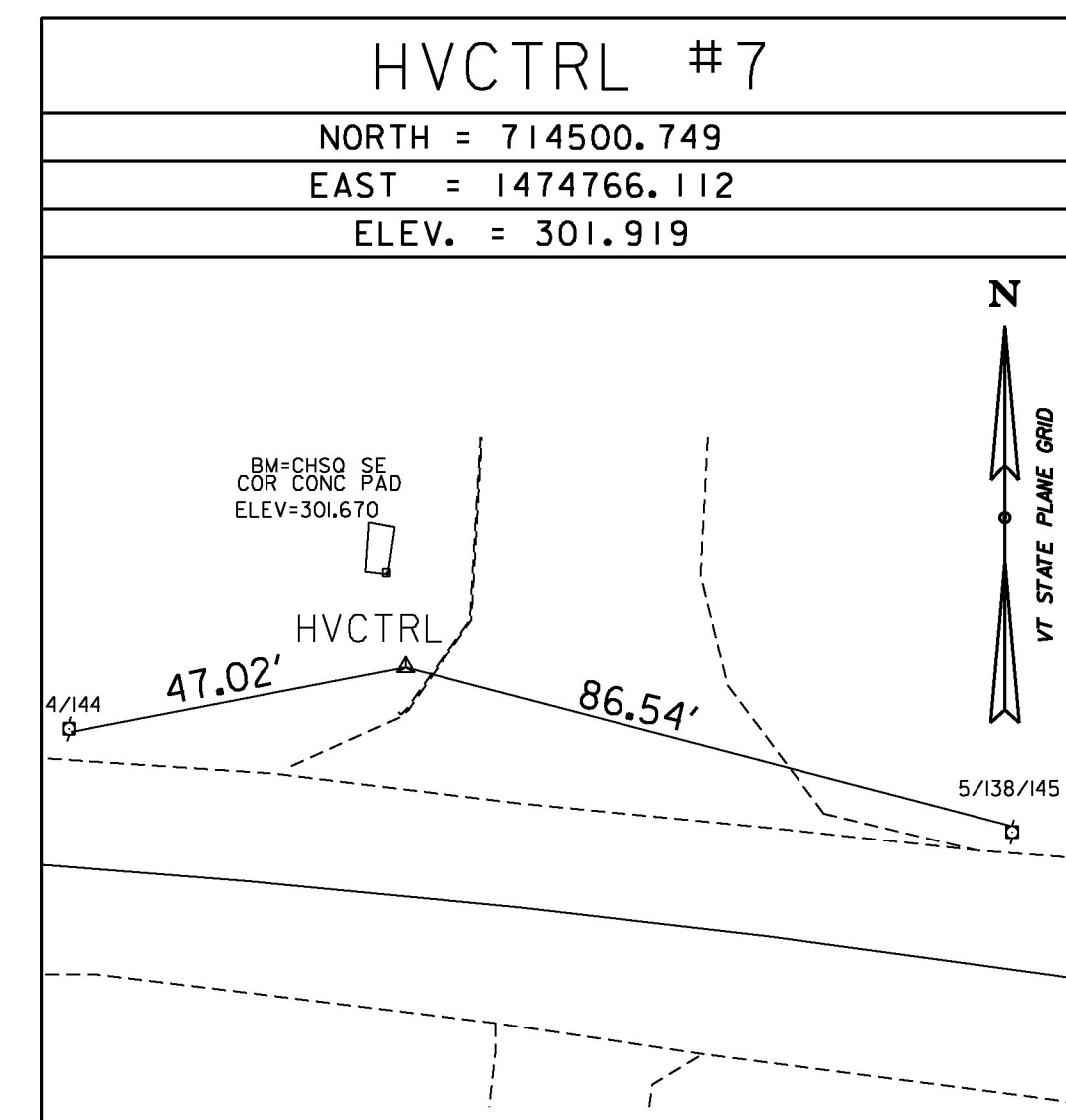
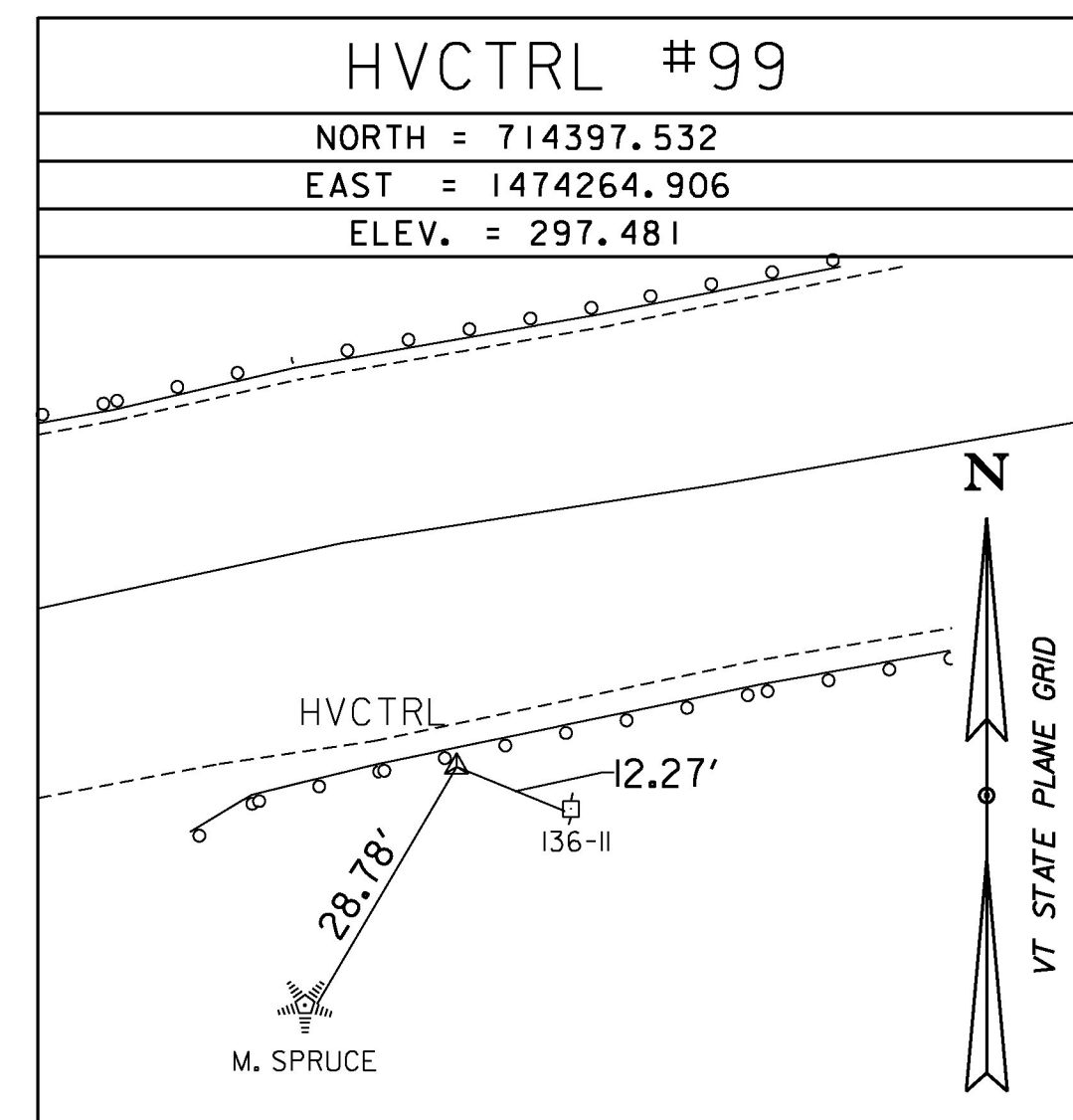
HVCTRL #2

SHUNPIKE

NORTH = 712933.32
EAST = 1471903.41
ELEV. = 337.17

DESCRIBED BY VERMONT AGENCY OF TRANSPORTATION 1996 (CHR)
GENERAL LOCATION, SOUTH BURLINGTON, VT. TO REACH FROM THE INTERSECTION OF U.S. ROUTE 2 AND VT ROUTE 2A AT TAFTS CORNERS IN WILLISTON GO WEST ALONG U.S. ROUTE 2 FOR 0.7 MI (1.1 KM) TO THE SECOND TRAFFIC LIGHT AND THE INTERSECTION OF SOUTH BROWNELL ROAD LEFT. TURN LEFT AND GO SOUTH ALONG SOUTH BROWNELL ROAD FOR 0.2 MI (0.3 KM) TO THE INTERSECTION OF SHUNPIKE ROAD RIGHT. TURN RIGHT AND GO WEST ALONG SHUNPIKE ROAD FOR 1.0 MI (1.6 KM) TO THE INTERSECTION OF KIMBALL AVENUE STRAIGHT AND SHUNPIKE ROAD RIGHT. CONTINUE STRAIGHT AHEAD AND GO WEST ALONG KIMBALL AVENUE FOR 0.1 MI (0.2 KM) TO THE MARK ON THE LEFT, ABOUT OPPOSITE A PAVED ROAD RIGHT LEADING TO ADELPHIA CABLE COMMUNICATIONS. THE MARK IS SET FLUSH WITH GROUND SURFACE IN THE TOP OF A 30 CM DIAMETER CONCRETE MONUMENT. IT IS 1.2 M (3.9 FT) SOUTH OF AND ABOUT LEVEL WITH OF THE SOUTH CURB OF KIMBALL AVENUE, 66.5 M (218.2 FT) EAST OF THE CENTERLINE OF A PAVED ROAD LEADING SOUTH TO DIGITAL CORPORATION, 40.4 M (132.5 FT) NORTH-NORTHEAST OF POLE NO.9, 15.8 M (51.8 FT) WEST OF THE CENTER OF A DROP INLET, AND 0.5 M (1.6 FT) NORTH OF A FIBERGLASS WITNESS POST.

TRAVERSE TIES



ALIGNMENT TIES

NORTH =
EAST =
ELEV. =

NORTH =
EAST =
ELEV. =

NORTH =
EAST =
ELEV. =

NORTH =
EAST =
ELEV. =

NORTH =
EAST =
ELEV. =

DATUM	
VERTICAL	NAVD 88
HORIZONTAL	NAD 83(1996)
ADJUSTMENT	COMPASS

PROJECT NAME:	SOUTH BURLINGTON-WILLISTON
PROJECT NUMBER:	NH 2944(I)
FILE NAME:	11d340/Survey/11d340+1
PROJECT LEADER:	G. EDWARDS
DESIGNED BY:	D. DRAPER
TIE SHEET 2	
PLOT DATE:	2/15/2017
DRAWN BY:	D. DRAPER
CHECKED BY:	J. LITTLE
SHEET	31 OF 249