

TEMPORARY 4 INCH WHITE LINE, PAINT
 DURABLE 4 INCH WHITE LINE (OPTION BID ITEM)
 W423+50 TO W425+88 SOLID LT
 W423+50 TO W429+50 SOLID RT
 W425+88 TO W426+00 SOLID LT (TH 79)
 W426+10 TO W427+10 SOLID LT (TH 79)
 W427+10 TO W429+50 SOLID LT

TEMPORARY 4 INCH YELLOW LINE, PAINT
 DURABLE 4 INCH YELLOW LINE (OPTION BID ITEM)
 W423+50 TO W426+18 SOLID LT & RT
 W426+05 TO W426+38 SOLID LT & RT (TH 79)
 W426+58 TO W429+50 SOLID LT & RT

TEMPORARY 24" STOP BAR, PAINT
 DURABLE 24" STOP BAR (OPTION BID ITEM)
 W426+06 TO W426+37 LT (TH 79)

TEMPORARY LETTER OR SYMBOL, PAINT
 DURABLE LETTER OR SYMBOL (OPTION BID ITEM)
 W424+75 LT - "SCHOOL"
 W426+24 LT - "STOP" (TH 79)

STEEL BEAM GUARDRAIL, GALVANIZED
 W426+79 TO W427+15 RT

REMOVAL AND DISPOSAL OF GUARDRAIL
 W426+79 TO W427+15 RT

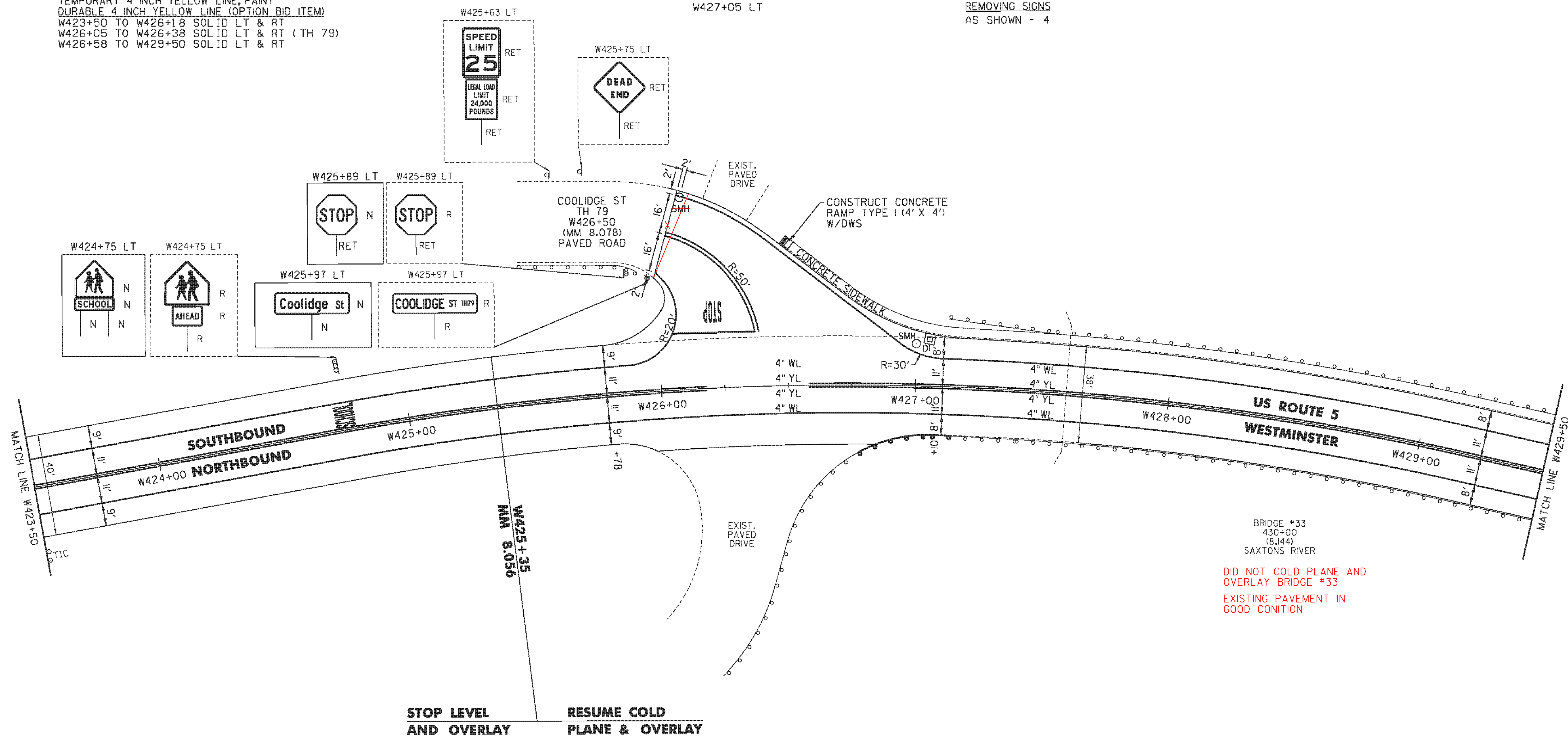
REHAB. DROP INLETS, CATCH BASINS,
 OR MANHOLES, CLASS I, CLASS II
 W427+05 LT

PORTLAND CEMENT
 CONCRETE SIDEWALK, 5 INCH
 W426+48 TO W426+53 LT (RAMP TYPE 1)

DETECTABLE WARNING SURFACE (DWS)
 W426+50 LT

REMOVING SIGNS
 AS SHOWN - 4

CHANGING ELEVATION
 OF SEWER MANHOLES (NON-PART)
~~W426+11 LT (TH 79)~~
 W427+00 LT



DID NOT COLD PLANE AND
 OVERLAY BRIDGE #33
 EXISTING PAVEMENT IN
 GOOD CONITION

- LEGEND**
- R = REMOVE EXISTING
 - S = SALVAGE
 - R&S = REMOVE AND SALVAGE
 - N = NEW
 - RET = RETAIN
 - B-B = BACK TO BACK
 - = EXISTING GUARDRAIL
 - = PROPOSED GUARDRAIL
 - YL = YELLOW LINE
 - WL = WHITE LINE
 - = DELINEATOR
 - = UTILITY POLE

PROJECT NAME:	PUTNEY-WESTMINSTER	FILE NAME:	zllc344bdr.dgn	PLOT DATE:	12/10/2013
PROJECT NUMBER:	STP 2946(I)	PROJECT LEADER:	P. SHEDD	DRAWN BY:	W. GORDON
		DESIGNED BY:	N. LEMAY	CHECKED BY:	P. SHEDD
		ROADWAY LAYOUT 78 US 5		SHEET	99 OF 138

NOT TO SCALE