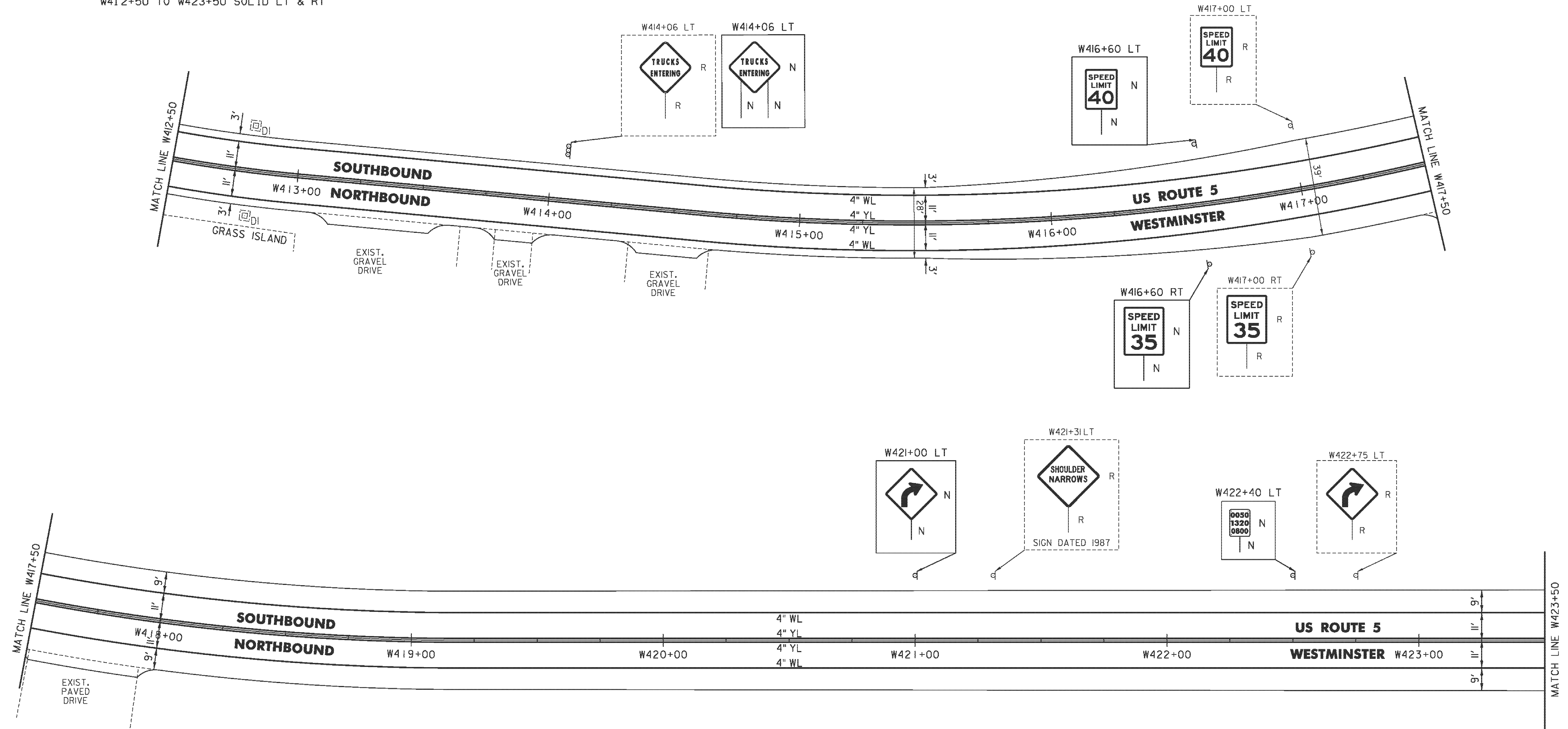


TEMPORARY 4 INCH WHITE LINE, PAINT
 DURABLE 4 INCH WHITE LINE (OPTION BID ITEM)
 W412+50 TO W423+50 SOLID LT & RT

REMOVING SIGNS
 AS SHOWN - 5

TEMPORARY 4 INCH YELLOW LINE, PAINT
 DURABLE 4 INCH YELLOW LINE (OPTION BID ITEM)
 W412+50 TO W423+50 SOLID LT & RT



COMPASS SCHOOL

NOT TO SCALE

- LEGEND**
- R = REMOVE EXISTING
 - S = SALVAGE
 - R&S = REMOVE AND SALVAGE
 - N = NEW
 - RET = RETAIN
 - B-B = BACK TO BACK
 - = EXISTING GUARDRAIL
 - = PROPOSED GUARDRAIL
 - YL = YELLOW LINE
 - WL = WHITE LINE
 - = DELINEATOR
 - ⊕ = UTILITY POLE

PROJECT NAME:	PUTNEY-WESTMINSTER	FILE NAME:	zllc344bdr.dgn	PLOT DATE:	12/10/2013
PROJECT NUMBER:	STP 2946(1)	PROJECT LEADER:	P. SHEDD	DRAWN BY:	W. GORDON
		DESIGNED BY:	N. LEMAY	CHECKED BY:	P. SHEDD
		ROADWAY LAYOUT 77 US 5		SHEET	98 OF 138