

TEMPORARY 4 INCH WHITE LINE, PAINT
 DURABLE 4 INCH WHITE LINE (OPTION BID ITEM)
 W309+50 TO W310+82 SOLID LT
 W309+50 TO W313+00 SOLID RT
 W312+06 TO W313+00 SOLID LT
 C38+00 TO D3+00 SOLID LT
 C38+00 TO C40+76 SOLID RT
 C39+16 TO C40+75 SOLID LT

TEMPORARY 4 INCH YELLOW LINE, PAINT
 DURABLE 4 INCH YELLOW LINE (OPTION BID ITEM)
 W309+50 TO W311+37 SOLID LT & RT
 W311+77 TO W313+00 SOLID LT & RT
 C38+00 TO C38+21 DOUBLE SOLID LT
 C38+00 TO C38+21 DOUBLE SOLID RT
 C38+21 TO C40+57 SOLID LT & RT
 D1+05 TO D3+00 SOLID RT

DURABLE 8 INCH YELLOW LINE (OPTION BID ITEM)
 C38+00 TO C38+21 SOLID LT & RT (DIAGONALS)

TEMPORARY 8 INCH WHITE LINE, PAINT
 DURABLE 8 INCH WHITE LINE (OPTION BID ITEM)
 C39+00 TO C39+16 SOLID LT
 D0+87 TO D1+05 SOLID RT

TEMPORARY 24" STOP BAR, PAINT
 DURABLE 24" STOP BAR (OPTION BID ITEM)
 C40+54 TO C40+56 RT

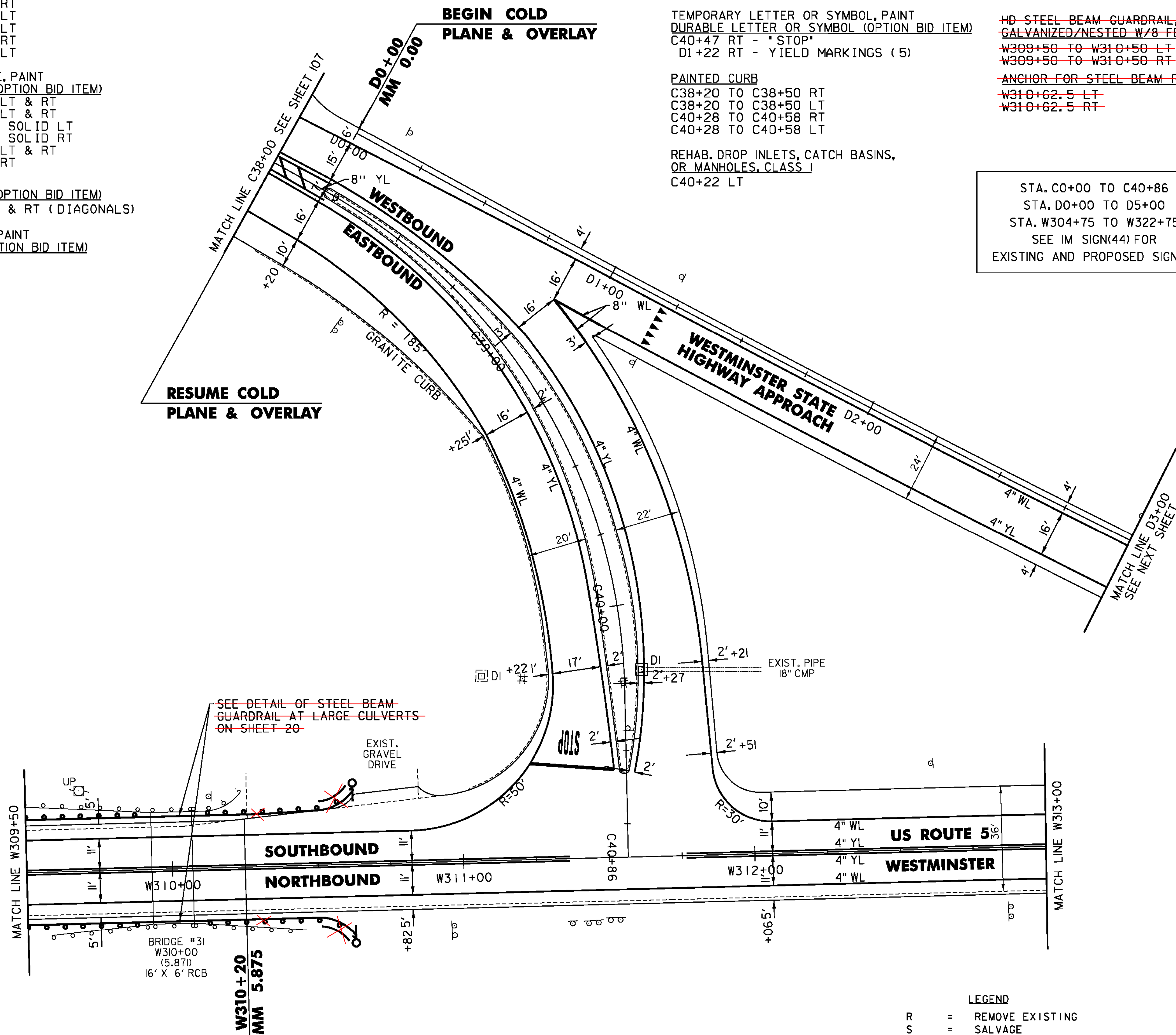
TEMPORARY LETTER OR SYMBOL, PAINT
 DURABLE LETTER OR SYMBOL (OPTION BID ITEM)
 C40+47 RT - "STOP"
 D1+22 RT - YIELD MARKINGS (5)

PAINTED CURB
 C38+20 TO C38+50 RT
 C38+20 TO C38+50 LT
 C40+28 TO C40+58 RT
 C40+28 TO C40+58 LT

REHAB. DROP INLETS, CATCH BASINS,
 OR MANHOLES, CLASS I
 C40+22 LT

~~STEEL BEAM GUARDRAIL, GALVANIZED~~
~~W310+50 TO W310+62.5 LT~~
~~W310+50 TO W310+62.5 RT~~
~~HD STEEL BEAM GUARDRAIL,~~
~~GALVANIZED/NESTED W/8 FEET POSTS~~
~~W309+50 TO W310+50 LT~~
~~W309+50 TO W310+50 RT~~
~~ANCHOR FOR STEEL BEAM RAIL~~
~~W310+62.5 LT~~
~~W310+62.5 RT~~

~~REMOVAL AND DISPOSAL OF GUARDRAIL~~
~~W309+50 TO W310+23 LT~~
~~W309+58 TO W310+45.5 RT~~
~~DELINEATOR WITH STEEL POST~~
~~W310+62.5 LT~~
~~W310+62.5 RT~~



STA. C0+00 TO C40+86
 STA. D0+00 TO D5+00
 STA. W304+75 TO W322+75
 SEE IM SIGN(44) FOR
 EXISTING AND PROPOSED SIGNING

STOP LEVEL AND OVERLAY
BEGIN COLD PLANE & OVERLAY

LEGEND

R	= REMOVE EXISTING
S	= SALVAGE
R&S	= REMOVE AND SALVAGE
N	= NEW
RET	= RETAIN
B-B	= BACK TO BACK
—	= EXISTING GUARDRAIL
—	= PROPOSED GUARDRAIL
YL	= YELLOW LINE
WL	= WHITE LINE
—	= DELINEATOR
—	= UTILITY POLE

PROJECT NAME: PUTNEY-WESTMINSTER
 PROJECT NUMBER: STP 2946(I)

FILE NAME: zllc344bdr.dgn
 PROJECT LEADER: P. SHEDD
 DESIGNED BY: N. LEMAY
 ROADWAY LAYOUT 66 US 5

PLOT DATE: 12/10/2013
 DRAWN BY: W. GORDON
 CHECKED BY: P. SHEDD
 SHEET 87 OF 138

NOT TO SCALE