

TEMPORARY 4 INCH WHITE LINE, PAINT
 DURABLE 4 INCH WHITE LINE (OPTION BID ITEM)
 181+50 TO 191+50 SOLID LT & RT

TEMPORARY 4 INCH YELLOW LINE, PAINT
 DURABLE 4 INCH YELLOW LINE, POLYUREA
 181+50 TO 191+50 SOLID LT & RT

STEEL BEAM GUARDRAIL, GALVANIZED
 187+20 TO 187+32.5 RT
 190+07.5 TO 190+20 RT

STEEL BEAM GUARDRAIL,
 GALVANIZED W/8 FEET POSTS
 187+32.5 TO 190+07.5 RT

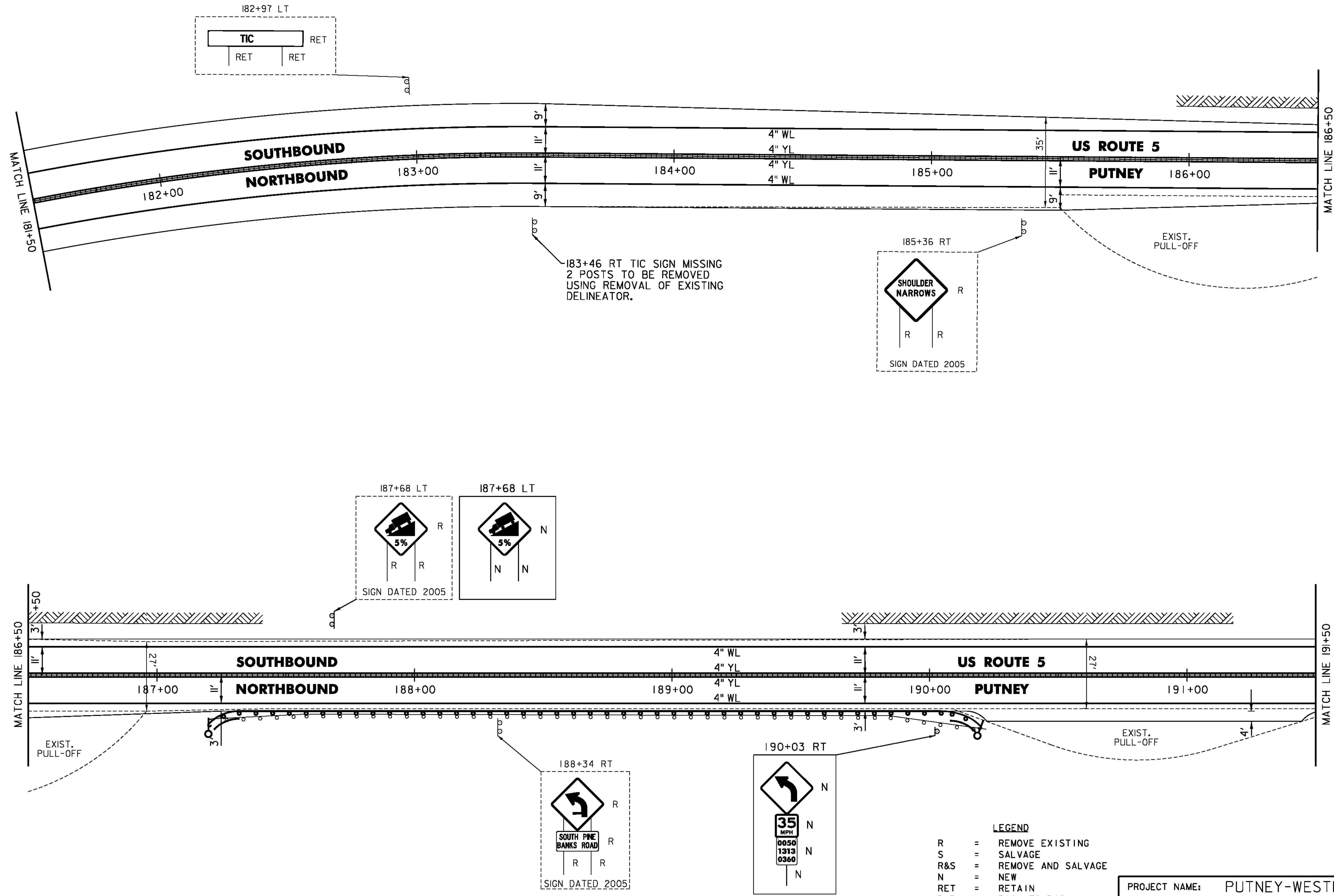
ANCHOR FOR STEEL BEAM RAIL
 187+20 RT
 190+20 RT

REMOVAL AND DISPOSAL OF GUARDRAIL
 187+20 TO 190+20 RT

DELINEATOR WITH STEEL POST
 187+20 RT
 190+20 RT

MILLED RUMBLE STRIPS
 181+50 TO 191+50 CL

REMOVING SIGNS
 AS SHOWN - 4



NOT TO SCALE

- LEGEND**
- R = REMOVE EXISTING
 - S = SALVAGE
 - R&S = REMOVE AND SALVAGE
 - N = NEW
 - RET = RETAIN
 - B-B = BACK TO BACK
 - = EXISTING GUARDRAIL
 - = PROPOSED GUARDRAIL
 - YL = YELLOW LINE
 - WL = WHITE LINE
 - = DELINEATOR
 - = UTILITY POLE

PROJECT NAME: PUTNEY-WESTMINSTER	PLOT DATE: 12/10/2013
PROJECT NUMBER: STP 2946(1)	DRAWN BY: W. GORDON
FILE NAME: zllc344bdr.dgn	CHECKED BY: P. SHEDD
PROJECT LEADER: P. SHEDD	SHEET 40 OF 138
DESIGNED BY: N. LEMAY	
ROADWAY LAYOUT I9 US 5	