

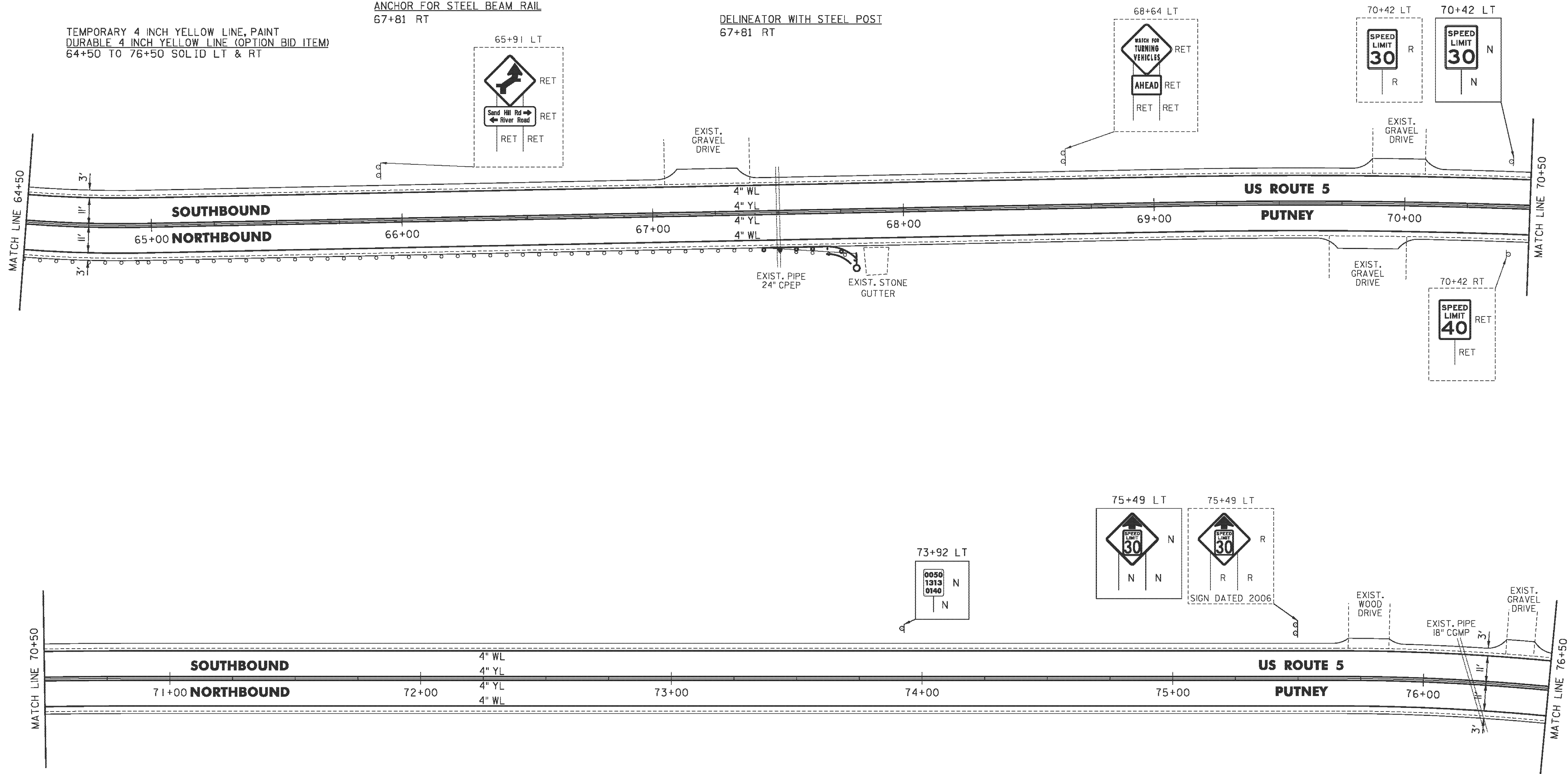
TEMPORARY 4 INCH WHITE LINE, PAINT
 DURABLE 4 INCH WHITE LINE (OPTION BID ITEM)
 64+50 TO 76+50 SOLID LT & RT

TEMPORARY 4 INCH YELLOW LINE, PAINT
 DURABLE 4 INCH YELLOW LINE (OPTION BID ITEM)
 64+50 TO 76+50 SOLID LT & RT

STEEL BEAM GUARDRAIL, GALVANIZED
 67+43.5 TO 67+81 RT
 ANCHOR FOR STEEL BEAM RAIL
 67+81 RT

REMOVAL AND DISPOSAL OF GUARDRAIL
 67+43.5 TO 67+81 RT
 DELINEATOR WITH STEEL POST
 67+81 RT

REMOVING SIGNS
 AS SHOWN - 2



- LEGEND**
- R = REMOVE EXISTING
 - S = SALVAGE
 - R&S = REMOVE AND SALVAGE
 - N = NEW
 - RET = RETAIN
 - B-B = BACK TO BACK
 - = EXISTING GUARDRAIL
 - = PROPOSED GUARDRAIL
 - YL = YELLOW LINE
 - WL = WHITE LINE
 - = DELINEATOR
 - = UTILITY POLE

PROJECT NAME: PUTNEY-WESTMINSTER
 PROJECT NUMBER: STP 2946(1)

FILE NAME: zllc344bdr.dgn
 PROJECT LEADER: P. SHEDD
 DESIGNED BY: N. LEMAY
 ROADWAY LAYOUT 5 US 5

PLOT DATE: 12/10/2013
 DRAWN BY: W. GORDON
 CHECKED BY: P. SHEDD
 SHEET 26 OF 138

NOT TO SCALE