

TEMPORARY 4 INCH WHITE LINE, PAINT  
 DURABLE 4 INCH WHITE LINE (OPTION BID ITEM)  
 47+50 TO 53+50 SOLID LT & RT

TEMPORARY 4 INCH YELLOW LINE, PAINT  
 DURABLE 4 INCH YELLOW LINE (OPTION BID ITEM)  
 47+50 TO 53+50 SOLID LT & RT

STEEL BEAM GUARDRAIL, GALVANIZED  
 51+35.5 TO 53+50 RT  
 51+56 TO 51+68.5 LT

STEEL BEAM GUARDRAIL,  
 GALVANIZED W/8 FEET POSTS  
 51+68.5 TO 53+50 LT

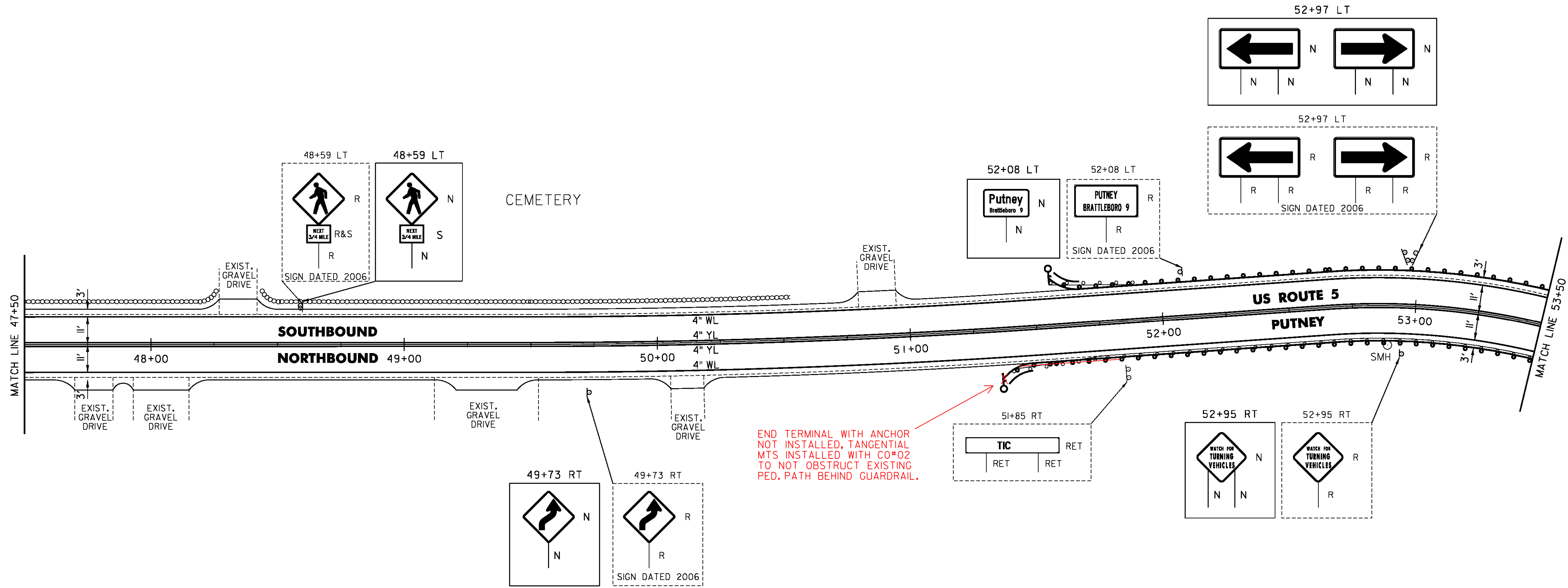
ANCHOR FOR STEEL BEAM RAIL  
 51+35.5 RT  
 51+56 LT

REMOVAL AND DISPOSAL OF GUARDRAIL  
 51+39 TO 53+50 RT  
 51+56 TO 53+50 LT

DELINEATOR WITH STEEL POST  
 51+35.5 RT  
 51+56 LT

REMOVING SIGNS  
 AS SHOWN - 7

ERECTING SALVAGED SIGNS  
 AS SHOWN - 1



- LEGEND**
- R = REMOVE EXISTING
  - S = SALVAGE
  - R&S = REMOVE AND SALVAGE
  - N = NEW
  - RET = RETAIN
  - B-B = BACK TO BACK
  - = EXISTING GUARDRAIL
  - - - = PROPOSED GUARDRAIL
  - YL = YELLOW LINE
  - WL = WHITE LINE
  - = DELINEATOR
  - = UTILITY POLE

PROJECT NAME:	PUTNEY-WESTMINSTER
PROJECT NUMBER:	STP 2946(I)
FILE NAME:	zllc344bdr.dgn
PROJECT LEADER:	P. SHEDD
DESIGNED BY:	N. LEMAY
ROADWAY LAYOUT 2 US 5	
PLOT DATE:	12/10/2013
DRAWN BY:	W. GORDON
CHECKED BY:	P. SHEDD
SHEET	23 OF 138

NOT TO SCALE