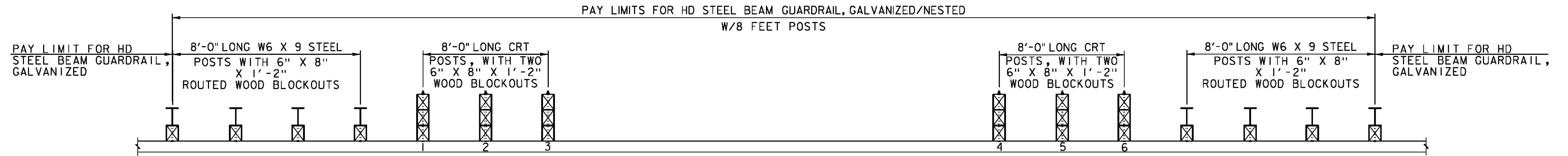
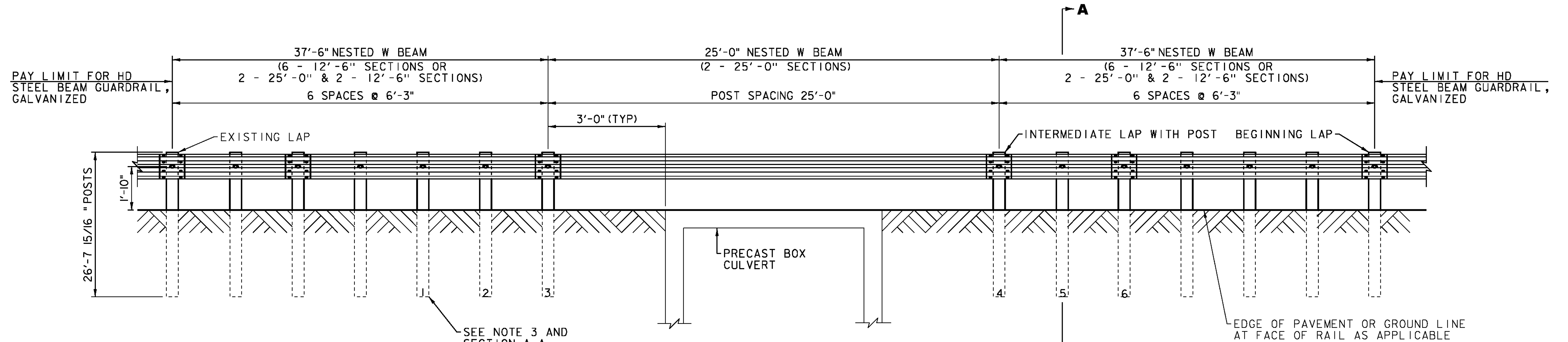


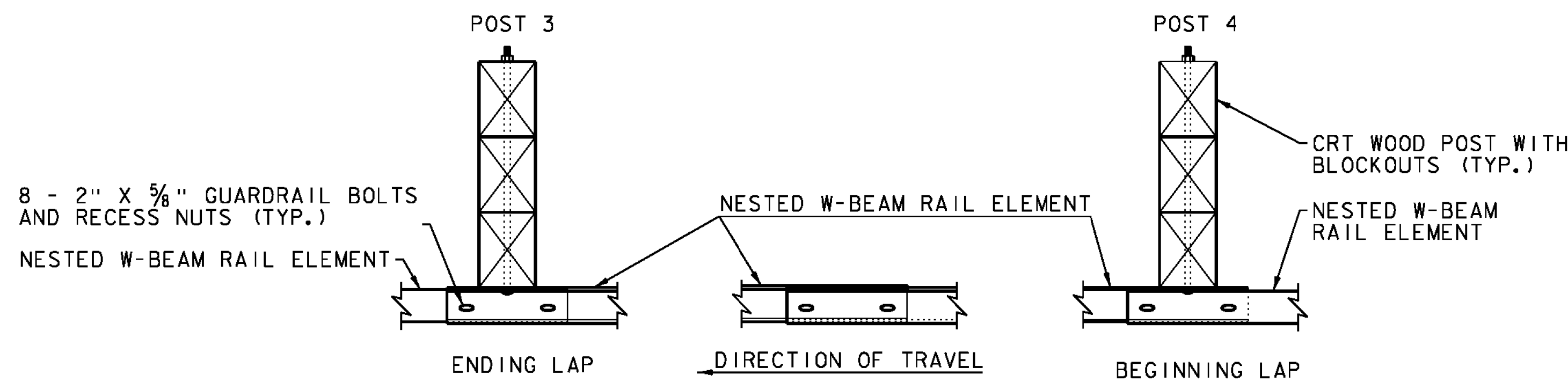
• DID NOT INSTALL NEW GUARDRAIL AT BRIDGE #31. EXISTING GUARDRAIL IN GOOD CONDITION.



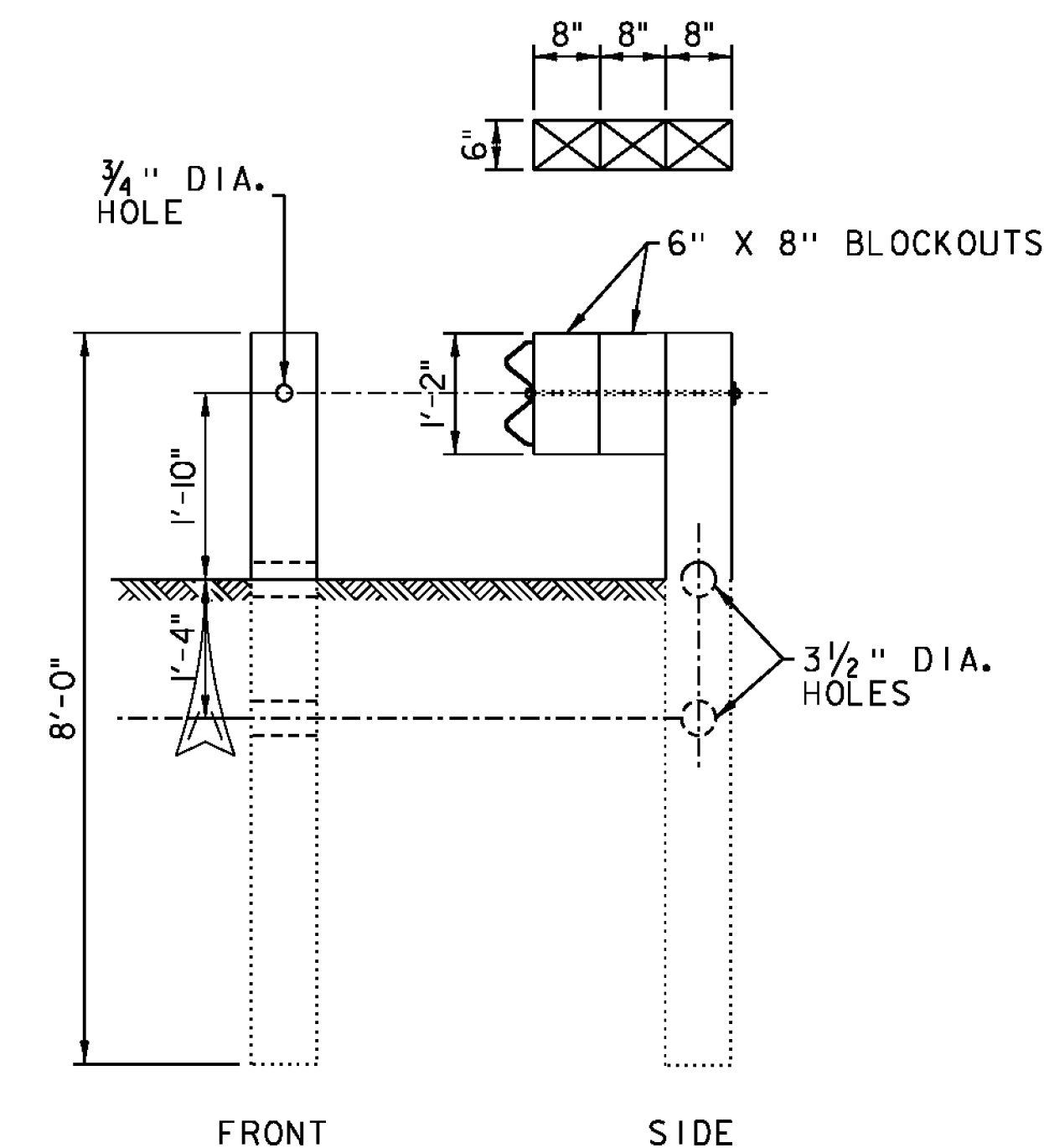
PLAN VIEW



DETAIL OF STEEL BEAM GUARDRAIL AT LARGE CULVERTS
BRIDGE #31 W310+00



INTERMEDIATE LAP WITHOUT POST



SECTION A-A
(POSTS 1 THRU 6)

(SEE NOTES 3 & 4)

NOTES

1. RAIL MEETS TEST LEVEL 3 REQUIREMENTS OF NCHRP REPORT 350.
2. 25'-0" RAIL LENGTH WILL BE USED TO ELIMINATE THE INTERMEDIATE LAP WITHOUT A POST.
3. POSTS 1 THRU 6 ARE BREAKAWAY CONTROLLED RELEASING TERMINAL (CRT) POSTS, SEE SECTION A-A FOR DETAILS.
4. POSTS 1 THRU 6 HAVE TWO, 6" X 8" BLOCKOUTS. SEE SECTION A-A FOR DETAILS.
5. ON POSTS 1 THRU 6, GUARDRAIL BOLT "D", AS SHOWN ON STD G1, SHALL BE 26" LONG.
6. ON ALL POSTS WHERE THE RAIL IS DOUBLE-NESTED GUARDRAIL BOLT "A", AS SHOWN ON STD G1, SHALL BE 2" LONG.
7. ALL POSTS WHERE THE RAIL IS DOUBLE-NESTED SHALL BE 8 FEET LONG TO PROVIDE FOR A 2'-8" SLOPE BREAKLINE.
8. SEE STD G1 FOR ADDITIONAL GUARDRAIL DETAILS.

NOT TO SCALE

PROJECT NAME: PUTNEY WESTMINSTER

PROJECT NUMBER: STP 2946(I)

FILE NAME: zllc344frm.dgn

PLOT DATE: 12/10/2013

PROJECT LEADER: P. SHEDD

DRAWN BY: S. GOODWIN

DESIGNED BY: N. LEMAY

CHECKED BY: P. SHEDD

BRIDGE RAILING DETAIL SHEET 2

SHEET 20 OF 138