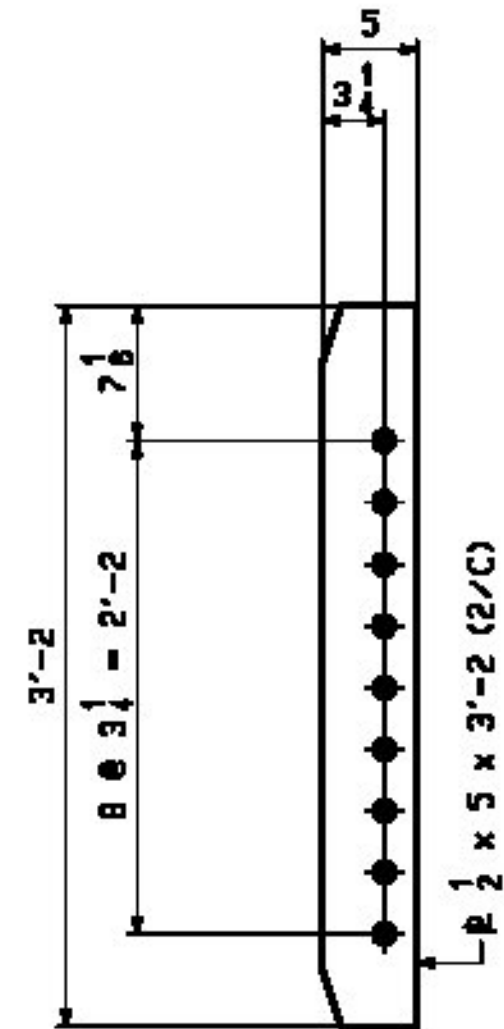
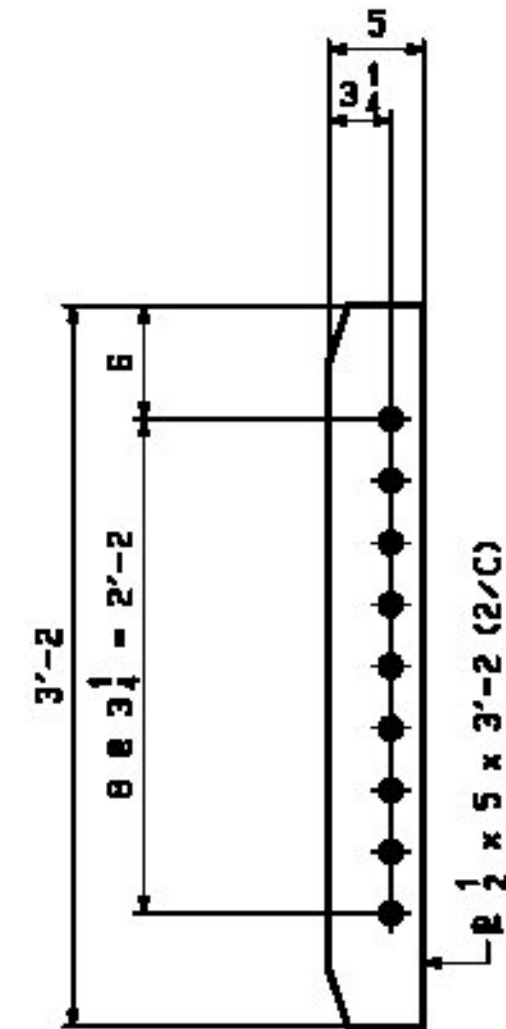


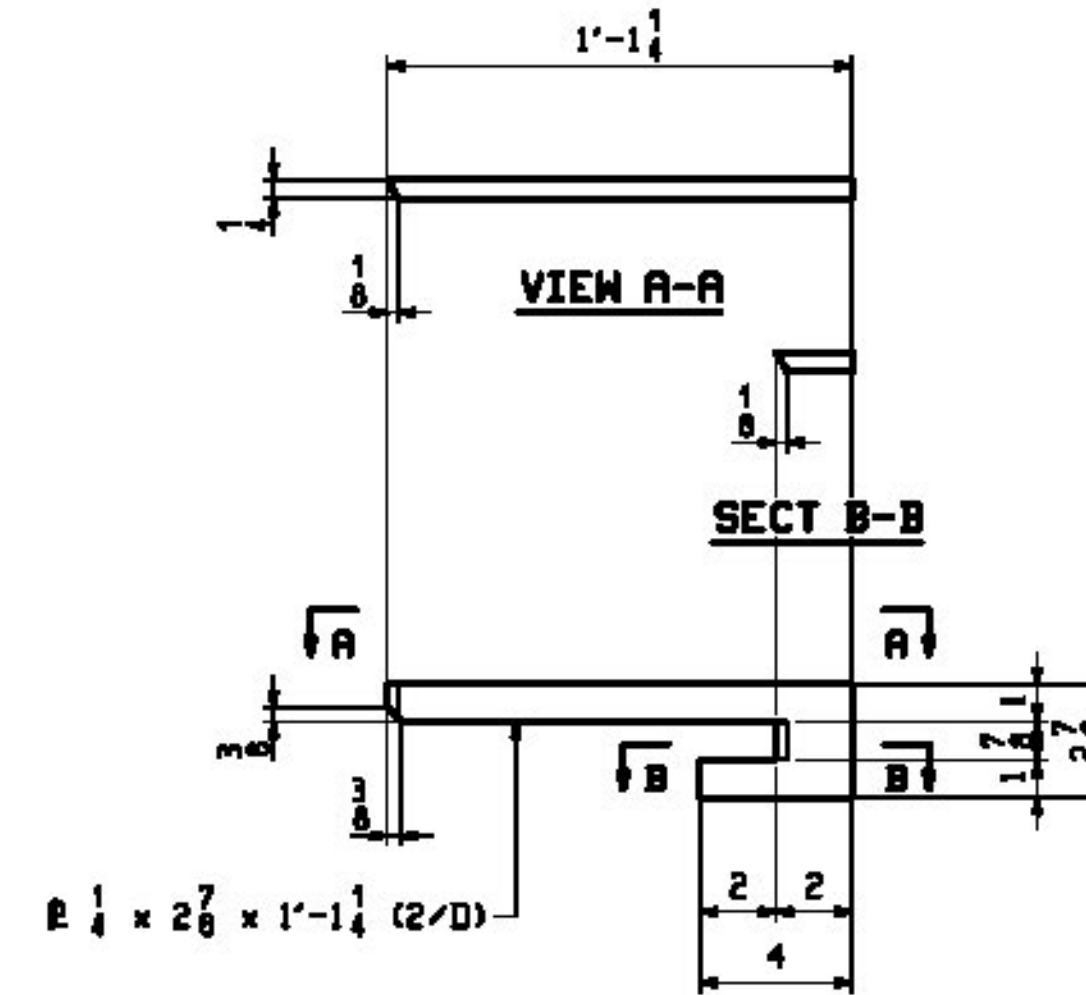
32 ~ BRG STIFF. ~ x1a
@ ABUT.'s



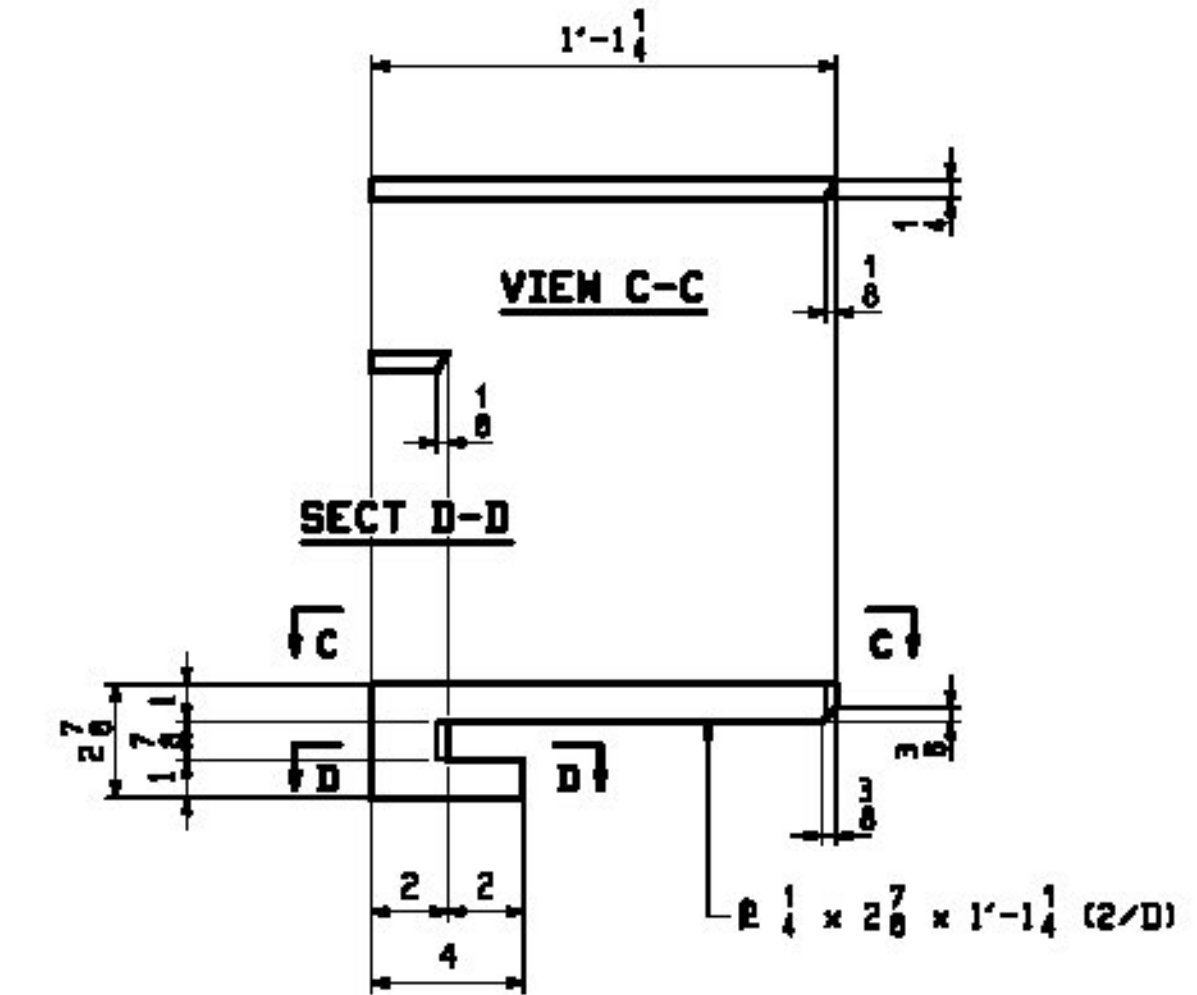
24 ~ CONN. PLATE ~ x1b
HIGH SIDE



24 ~ CONN. PLATE ~ x1c
LOW SIDE



ONE ~ DRIP BAR ~ x1d
FAR SIDE OF G1 @ ABUT. 2



ONE ~ DRIP BAR ~ x1f
NEAR SIDE OF G8 @ ABUT. 2

NOTES:
1. FOR GENERAL NOTES SEE DRAWING GNI.

REV.	DATE	REMARKS	DWN	CHK	APVL	SHOP
0						
MATERIAL:		SURFACE PREP. & PAINT:		HOLES:		SHOP BOLTS:
A709-50H		SEE GNI		5/16"		NONE
DESCRIPTION: GIRDER STANDARDS						
CASCO BAY STEEL STRUCTURES, INC.						
1 WALLACE AVE.			PHONE (207) 780-6722		TEMBOR 5024	
SOUTH PORTLAND, ME 04106			FAX (207) 780-6726			
STRUCTURE: VT RTE 131 OVER TWENTYMILE STREAM				DRWN:	DATE:	
WINDSOR COUNTY				EE0	11/20	
VERMONT AGENCY OF TRANSPORTATION				CHKD:	DATE:	
				DD	11/22	
LOCATION: CAVENDISH, VERMONT				JOB NO.	DWG NO.	
PROJ NO. ER BRF 0146(13)				541	X1	
CUSTOMER: COLD RIVER BRIDGES, LLC					REV. Δ	