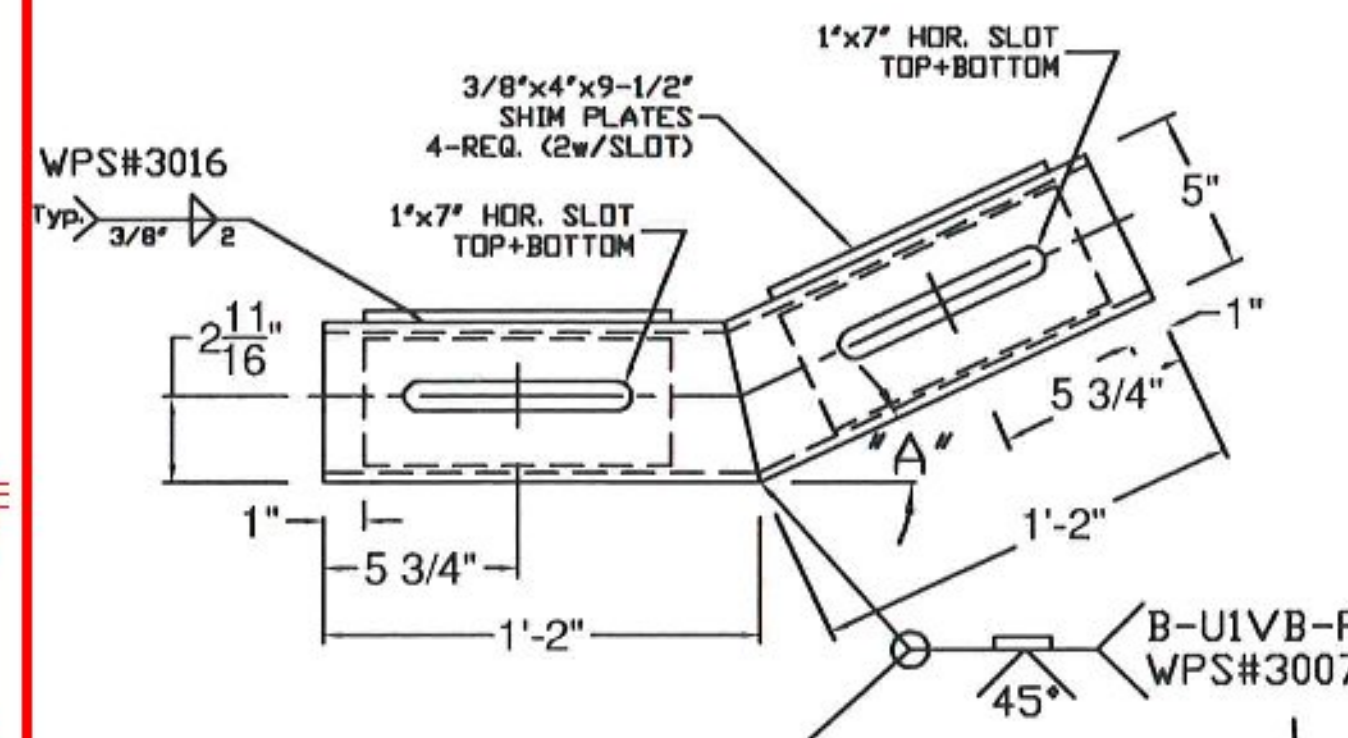
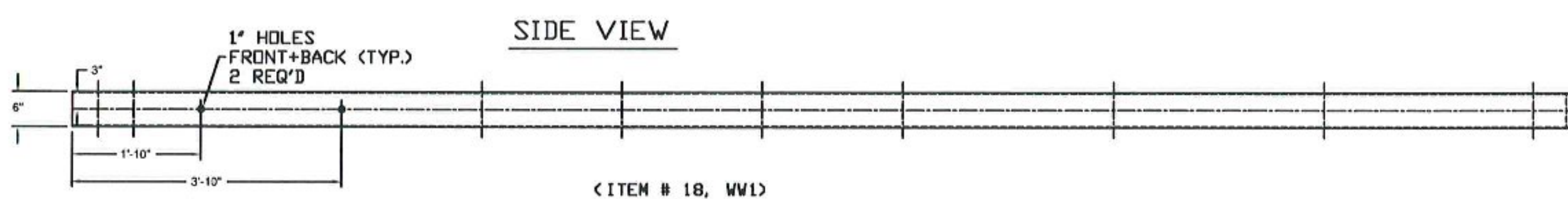
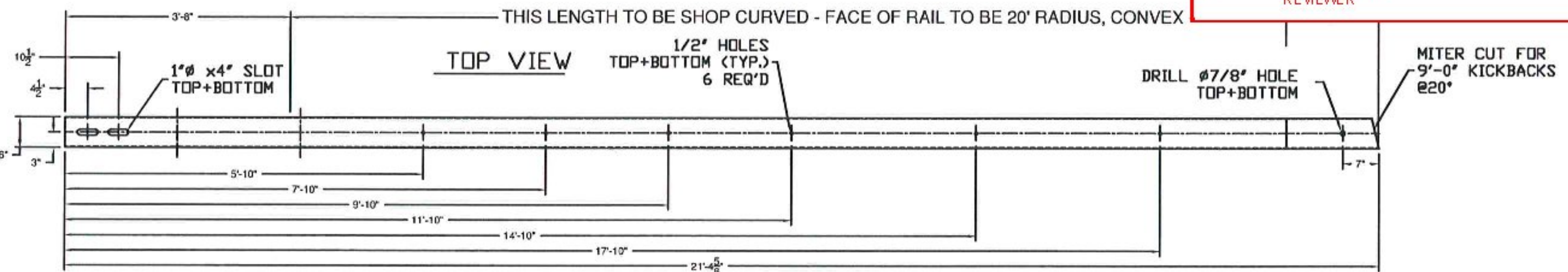


Vermont Agency of Transportation
RECEIVED
 ON: February 28, 2014
 and Checked for
CONFORMANCE
 BY: Rob Young DATE: 03/07/2014

T.Y. LIN INTERNATIONAL
 THE STAMPED DOCUMENTS ARE HEREBY:
 X APPROVED
 APPROVED AS NOTED
 REVISE AND RESUBMIT
 SEE TRANSMITTAL FOR ADDITIONAL INFORMATION AS APPLICABLE.
 THIS REVIEW IS FOR GENERAL CONFORMANCE WITH DESIGN CONCEPT ONLY. ANY DEVIATION FROM THE PLANS OR SPECIFICATIONS NOT CLEARLY NOTED BY THE CONTRACTOR HAS NOT BEEN REVIEWED. REVIEW BY THE ENGINEER SHALL NOT RELIEVE THE CONTRACTOR OF THE CONTRACTUAL RESPONSIBILITY FOR ANY ERRORS OR DEVIATION FROM THE CONTRACT REQUIREMENTS.
 JOSH OLUND REVIEWER 02/28/2014 DATE



HSS 5"x5"x3/16"
 (ITEM # 12)
 A - SEE PLAN FOR TURN BACK DISTANCE, SET ANGLE ACCORDINGLY. (40° FOR WW 1, 45° FOR WW2, 25° FOR WW 3 & WW 4)
 B - TURN DOWN ANGLE SET BY THE 9" MEASUREMENT AT THE END OF THE BOX BEAM. (FIELD MEASUREMENT REQ'D)



ITEM #: 621.725 F.R. LAFAYETTE, CAVENDISH SHEET 7 OF 10

APPROVED BY: _____

GUARD RAIL TO BRIDGE RAIL TRANSITION DETAILS SHEET
 CAVENDISH, ER BR# 0416 (13), ROUTE VT 131, OVER TWENTY MILE STREAM
 VERMONT

R NO.	DATE	DESCRIPTION	BY	R NO.	DATE	DESCRIPTION	BY
E 1	2/07/14	REVISED PER 12/20/13 MARK-UP	EP E				
V 2	2/20/14	REVISED PER 2/18/14 MARK-UP	EP V				

ELDERLEE, INC.
 OAKS CORNERS, NEW YORK 14518
 E-Mail: dlong@elderlee.com
 Tel: 315-789-8670 Fax: 315-789-8615

DRAWN: E.P. 11/13/13
 CHECKED: D.L. 11/20/13
 APPROVED: _____
 SCALE: SCHEMATIC
 DRAWING NO. F.R. LAFAYETTE, CAVENDISH