

BY: Rob Young
DATE: 03/24/2014
CONFORMANCE
and Checked for
ON: March 17, 2014
RECEIVED
Vermont Agency of Transportation

T.Y. LIN INTERNATIONAL

THE STAMPED DOCUMENTS ARE HEREBY:

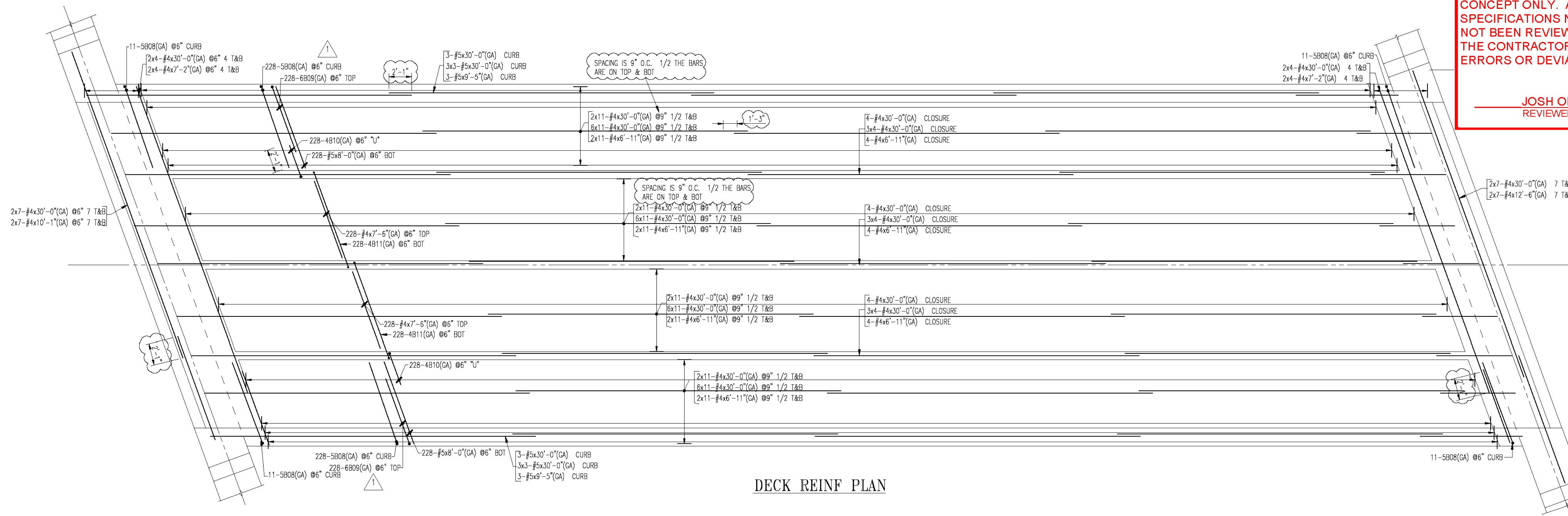
- APPROVED
- APPROVED AS NOTED
- REVISE AND RESUBMIT

SEE TRANSMITTAL FOR ADDITIONAL INFORMATION AS APPLICABLE.

THIS REVIEW IS FOR GENERAL CONFORMANCE WITH DESIGN CONCEPT ONLY. ANY DEVIATION FROM THE PLANS OR SPECIFICATIONS NOT CLEARLY NOTED BY THE CONTRACTOR HAS NOT BEEN REVIEWED. REVIEW BY THE ENGINEER SHALL NOT RELIEVE THE CONTRACTOR OF THE CONTRACTUAL RESPONSIBILITY FOR ANY ERRORS OR DEVIATION FROM THE CONTRACT REQUIREMENTS.

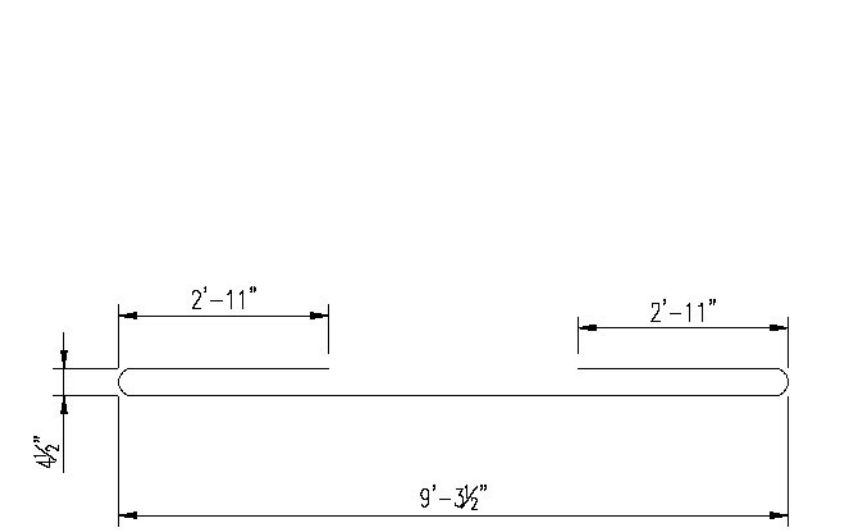
JOSH OLUND
REVIEWER

03/21/2014
DATE

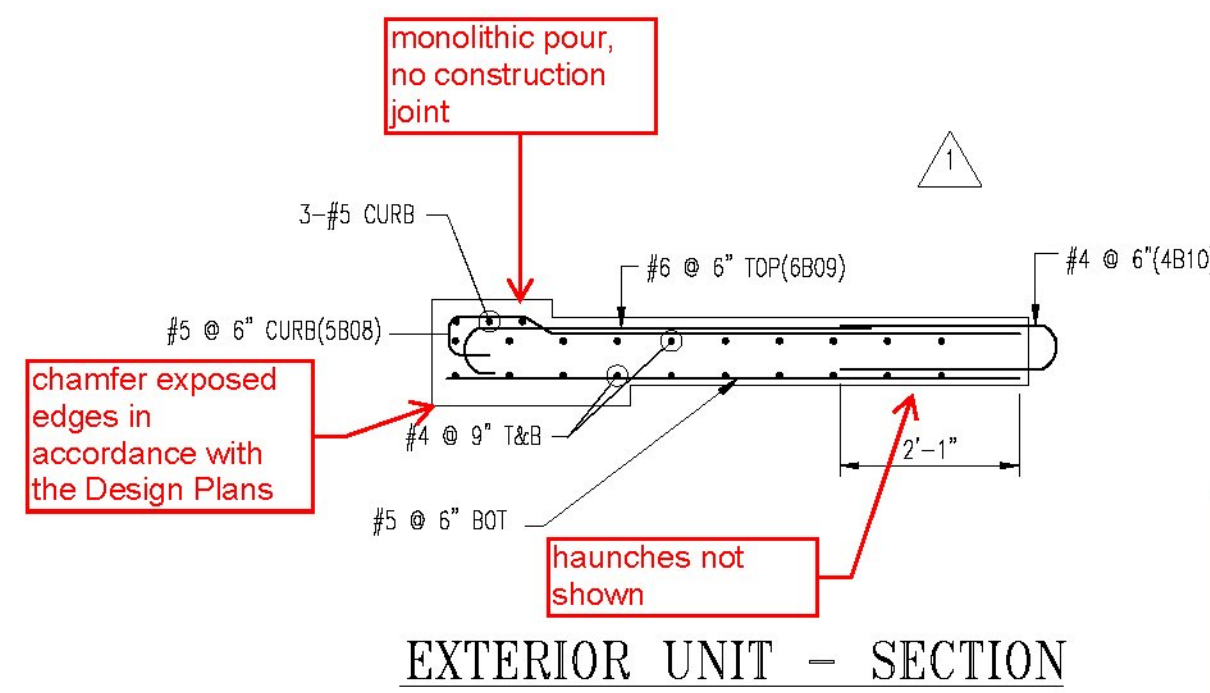


DECK REINF PLAN

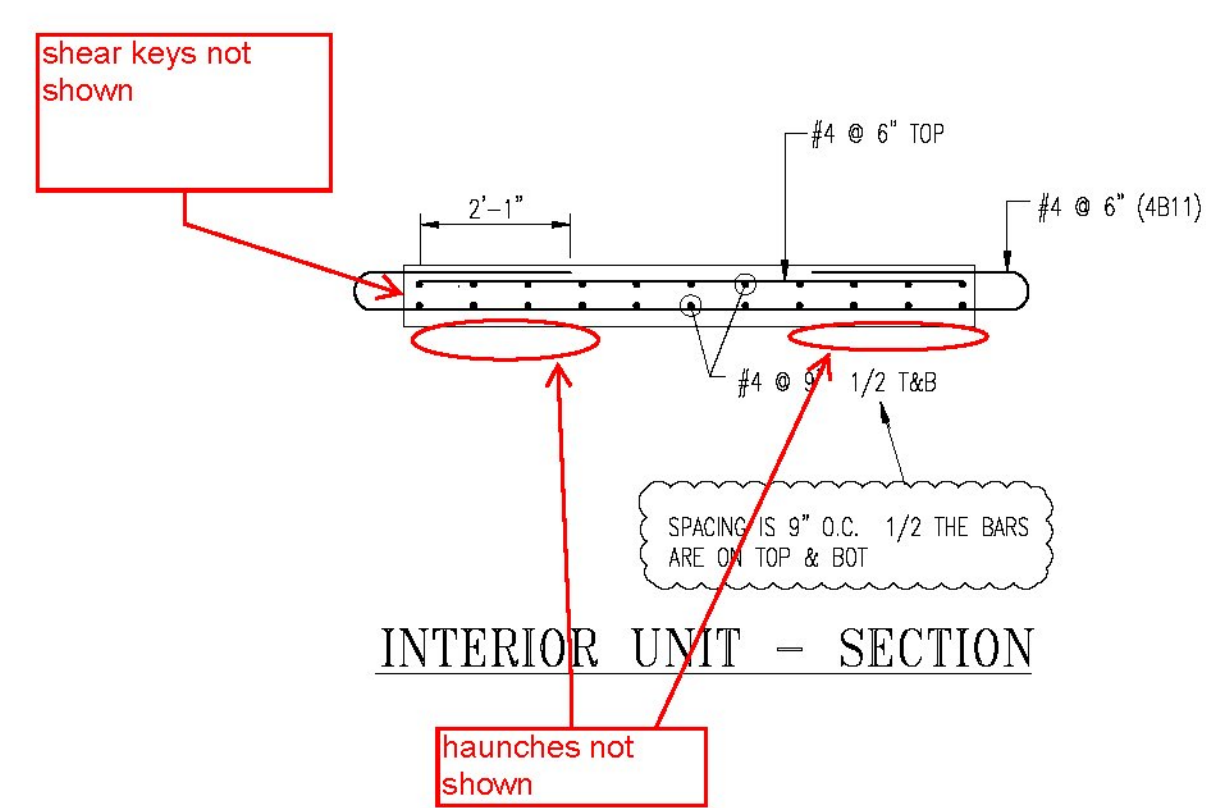
| Bar Mark | Qty | Size | Total Length | Type | X | Y | Z | W | V | U | T | S | R | Q | P | O | N | M | L | K | J | I | H | G | F | E | D | C | B | A |
|----------|-----|------|--------------|------|---|---|---|---|---|---|---|---|---|---|---|---|---|---|---|---|---|---|---|---|---|---|---|---|---|---|
| 4B10 | 456 | #4 | 6'-6 3/4" | 17 | | | | | | | | | | | | | | | | | | | | | | | | | | |
| 4B11 | 456 | #4 | 15'-7 1/4" | H10 | | | | | | | | | | | | | | | | | | | | | | | | | | |
| 5B08 | 500 | #5 | 9'-2 3/4" | H01 | | | | | | | | | | | | | | | | | | | | | | | | | | |
| 5B09 | 456 | #6 | 7'-2 1/2" | 1 | | | | | | | | | | | | | | | | | | | | | | | | | | |



SPECIAL SKETCH 4B11 TYPE H10



EXTERIOR UNIT - SECTION

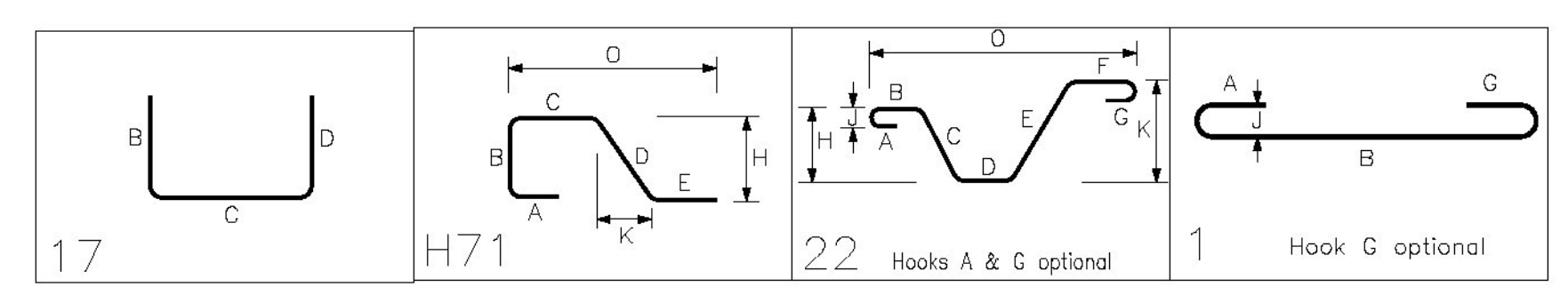


INTERIOR UNIT - SECTION

concrete cover (reinforcement clear cover) needs to be in accordance with the design plans

ENG. AND ARCH. PLEASE VERIFY ALL CLOUDED AREAS

(GA) IS DUAL COATED REINF



| SIZE | TOP BARS | OTHER BARS |
|------|----------|------------|
| #11 | | |
| #10 | | |
| #9 | | |
| #8 | | |
| #7 | | |
| #6 | | |
| #5 | | |
| #4 | | |
| #3 | | |

* Top bars are horiz. bars with more than 12" of concrete cast below the bars.

| No. | Description | Date | By |
|-----|-----------------------|----------|-----|
| 3 | CORRECTIONS/ APPROVAL | 3-14-14 | TRH |
| 2 | CORRECTIONS/APPROVAL | 2-17-14 | TRH |
| 1 | CORRECTIONS/ APPROVAL | 1-16-14 | TRH |
| 0 | APPROVAL | 12-18-13 | TRH |

Revisions and Issue Record

The full intent and purpose of this drawing is the placing of reinforcing steel bars ONLY. It is NOT to be used as a means of communication between the Architect, Engineer, Contractor or any other Sub-trades.

THIS DRAWING IS NOT TO BE SCALED.

HarrisRebar
Barbier Steel
National Strength. Local Service.

DETAILED AT:
CANAAN
NEW HAMPSHIRE

Project: BRIDGE REPLACEMENT #1
CAVENDISH, VT

Drawing: DECK REINF

Customer: COLD RIVER BRIDGES

Engineer:

Refer to Release:

| Date | Drawn | Chkd. | JOB No. | Dwg. No. |
|----------|-------|-------|----------|----------|
| 12-16-13 | TRH | | 10050769 | R02 |

W:\mill\Projects\10050769\Placing Drawings\DWGs\R02.dwg