

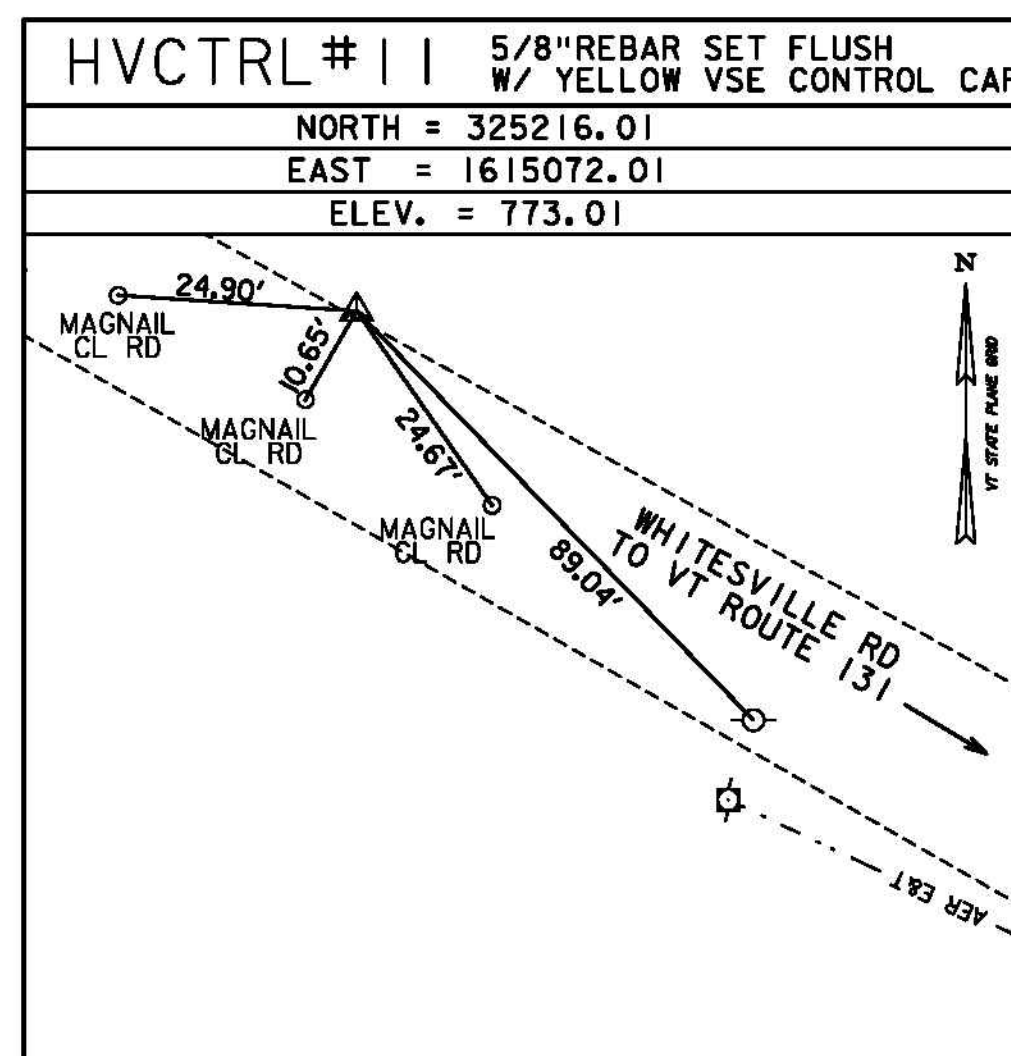
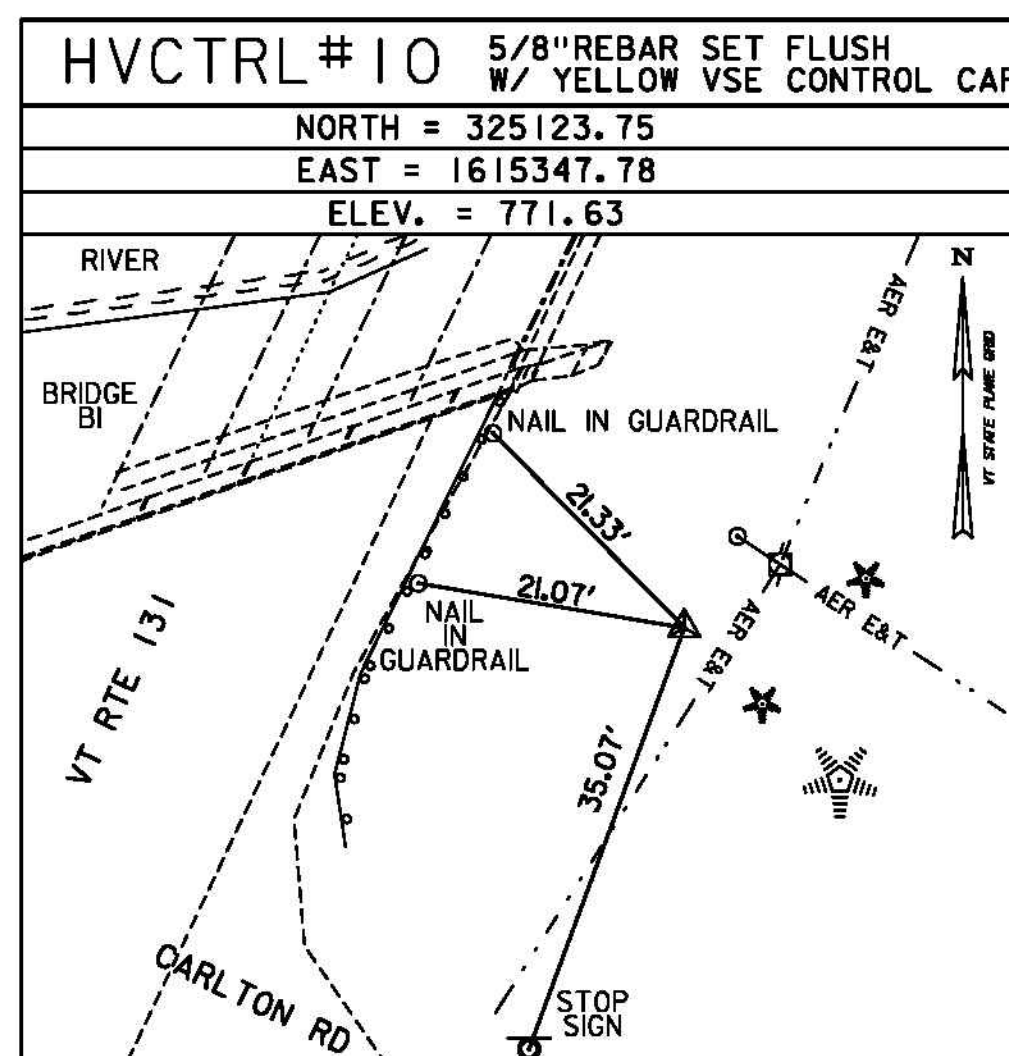
GPS/NGS CONTROL POINTS

SPRINGFIELD VT CORS ARP

PID DJ8961  
 N = 284807.69  
 E = 1646390.48  
 ELLIP HEIGHT = 513.30

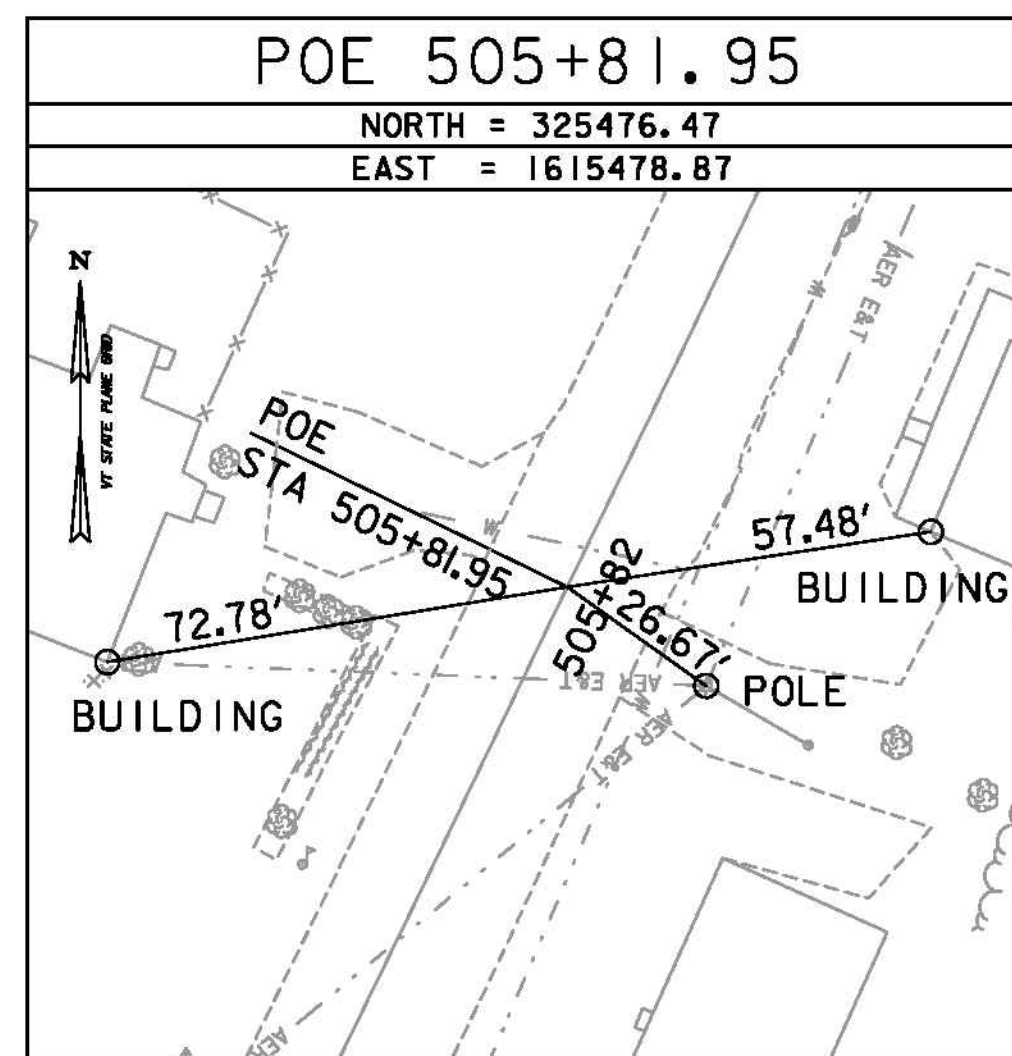
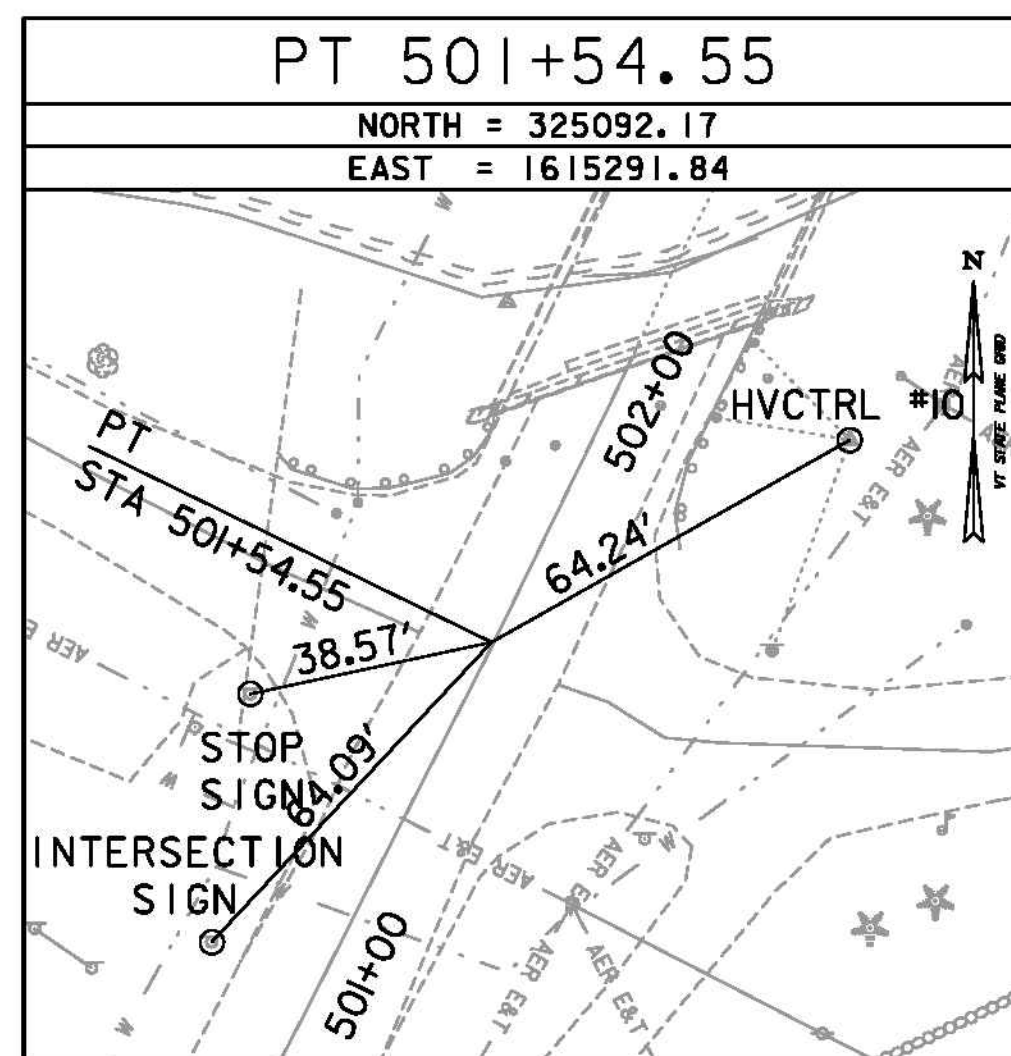
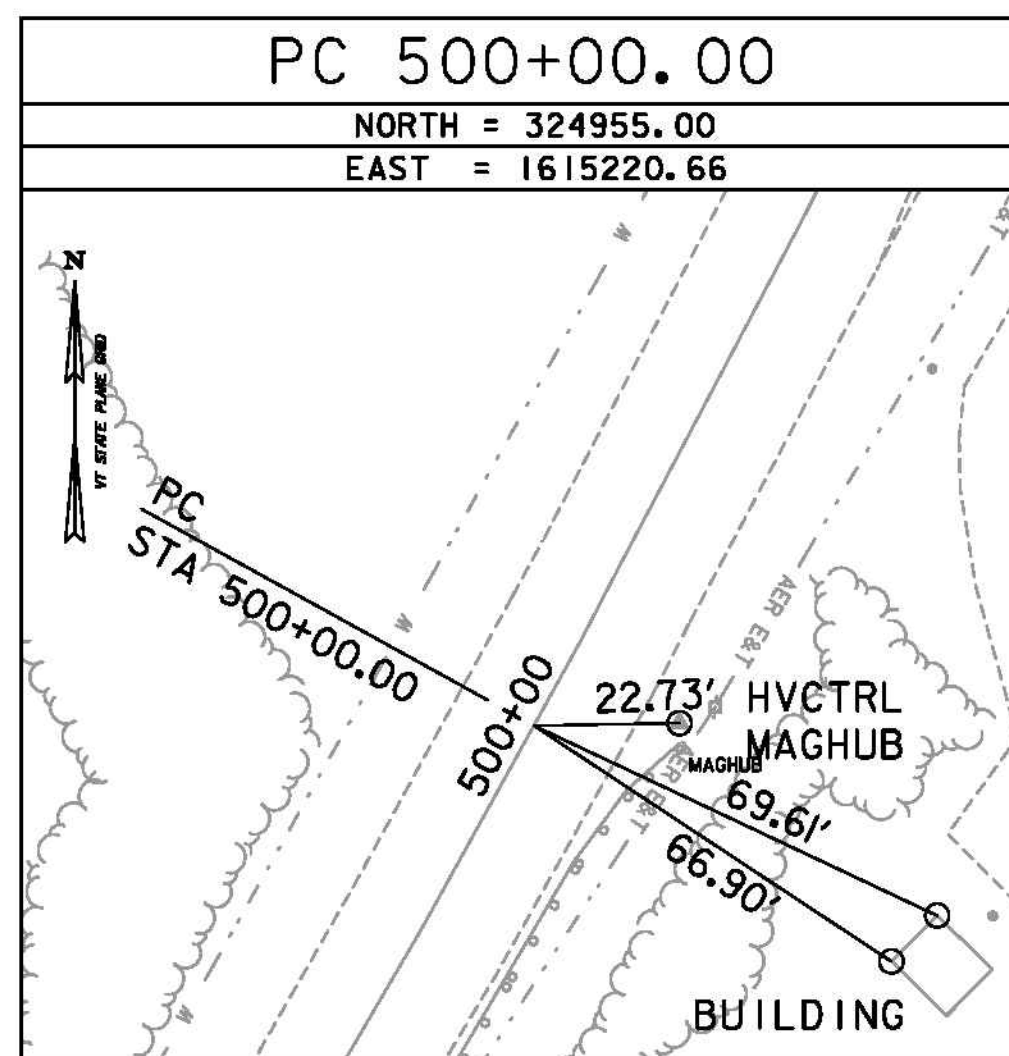
STATION IS A GPS CONTINUOUSLY OPERATING REFERENCE STATION. STATION IS THE ANTENNA REFERENCE POINT OF THE GPS ANTENNA. LOCATED AT THE SPRINGFIELD, VERMONT HIGH SCHOOL, THE MONUMENT IS ATTACHED TO A TWO STORY CONCRETE & BRICK BUILDING WITH A 8 FT CONCRETE FOUNDATION BUILT IN 1967. THE MAST IS A 1.75 INCH DIA. GALV PIPE THAT IS 108 INCHES LONG. THE MAST IS ATTACHED TO A STEEL MOUNTING FRAME WITH THREE ATTACHMENTS CONSISTING OF 3/8 INCH SS THROUGH BOLTS. THE MOUNTING FRAME IS ATTACHED TO THE BUILDING USING 8 ATTACHMENT POINTS. THE TOP 2 AND THIRD 2 ARE 1/2 INCH SS BOLTS SECURED TO THE BRICK OR CONCRETE WITH LEAD ANCHORS. THE SECOND 2 AND BOTTOM 2 ATTACHMENTS ARE THROUGH BOLTED AND CONSIST OF 1/2 INCH SS THREADED ROD AND NUTS.

TRAVERSE TIES



\* MAIN TRAVERSE COMPLETED: DECEMBER 28, 2011 BY VSE, T. CATTANEO-PC, T. COMSTOCK

ALIGNMENT TIES



DATUM	
VERTICAL	NAVD 88(GEOD09) FT
HORIZONTAL	NAD 83(CORS) sFT
ADJUSTMENT	LSQ



TYLINTERNATIONAL

PROJECT NAME: CAVENDISH  
 PROJECT NUMBER: ER BRF 0146(13)

FILE NAME: zllc3l8bdr\_tf.dgn  
 PROJECT LEADER: J. OLUND  
 DESIGNED BY: J. HOWE  
 TIE SHEET

PLOT DATE: 7/19/2013  
 DRAWN BY: S. MORGAN  
 CHECKED BY: D. BURHANS  
 SHEET 10 OF 49