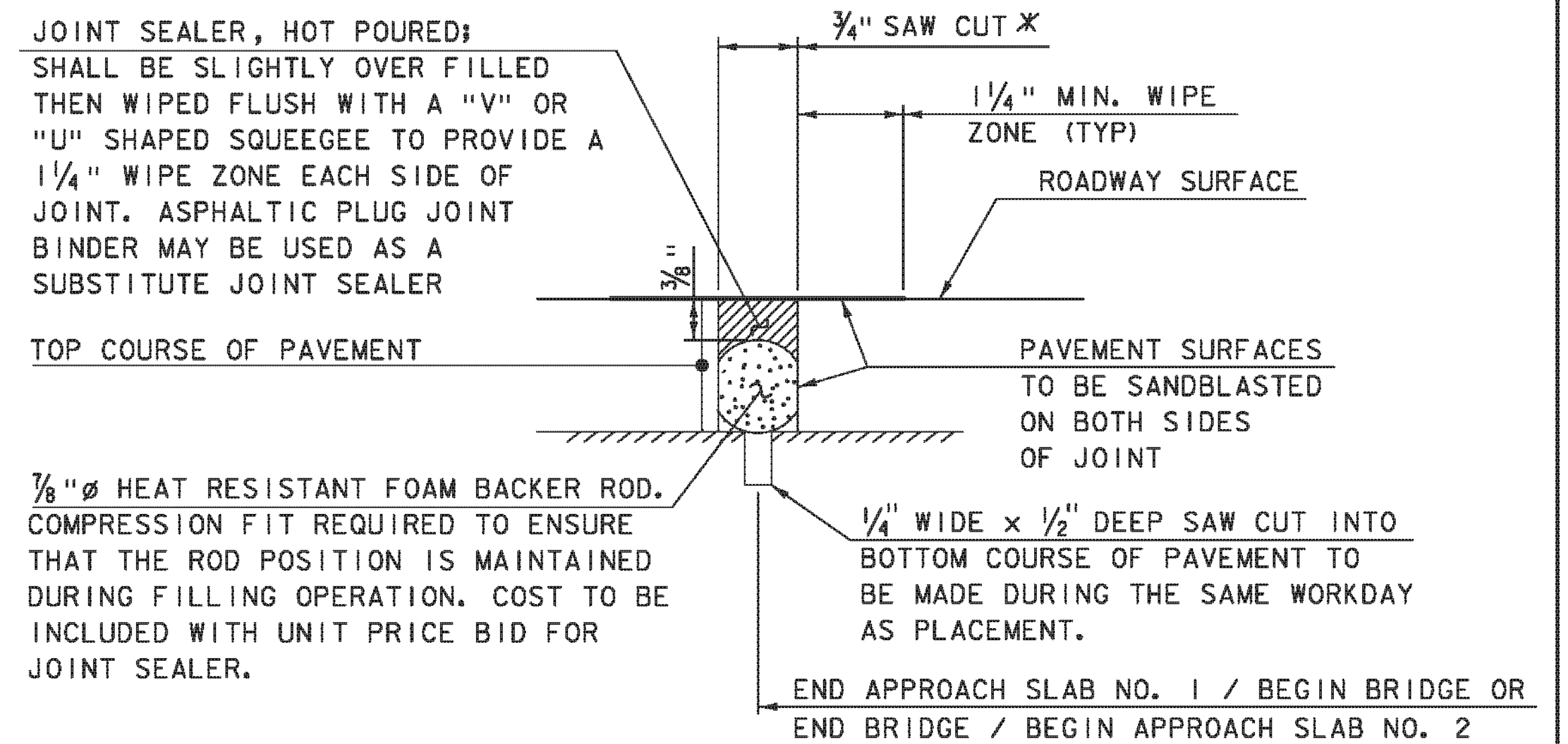
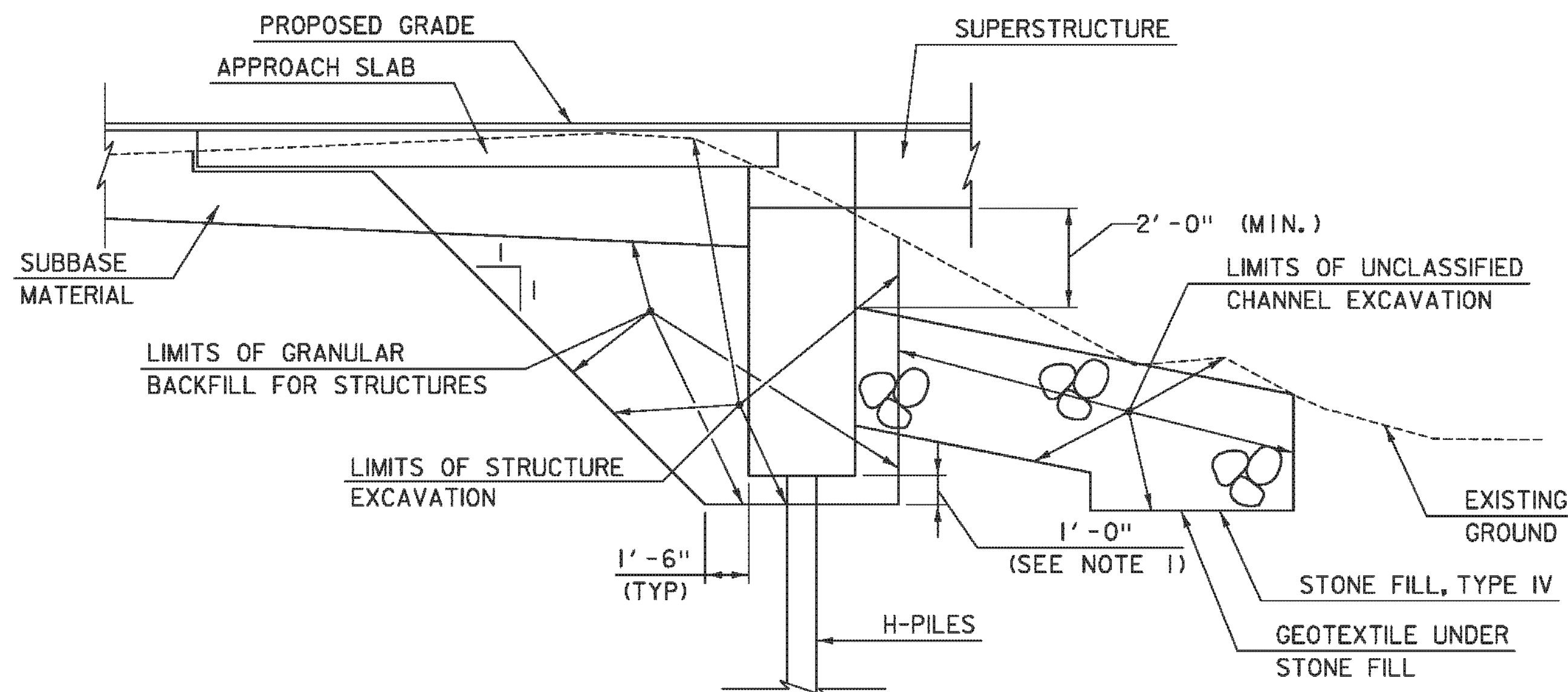


BRIDGE TYPICAL SECTION
SCALE: 3/8" = 1'-0"



ITEM 524.11, "JOINT SEALER, HOT POURED"
SAWED PAVEMENT JOINT DETAIL
(NOT TO SCALE)

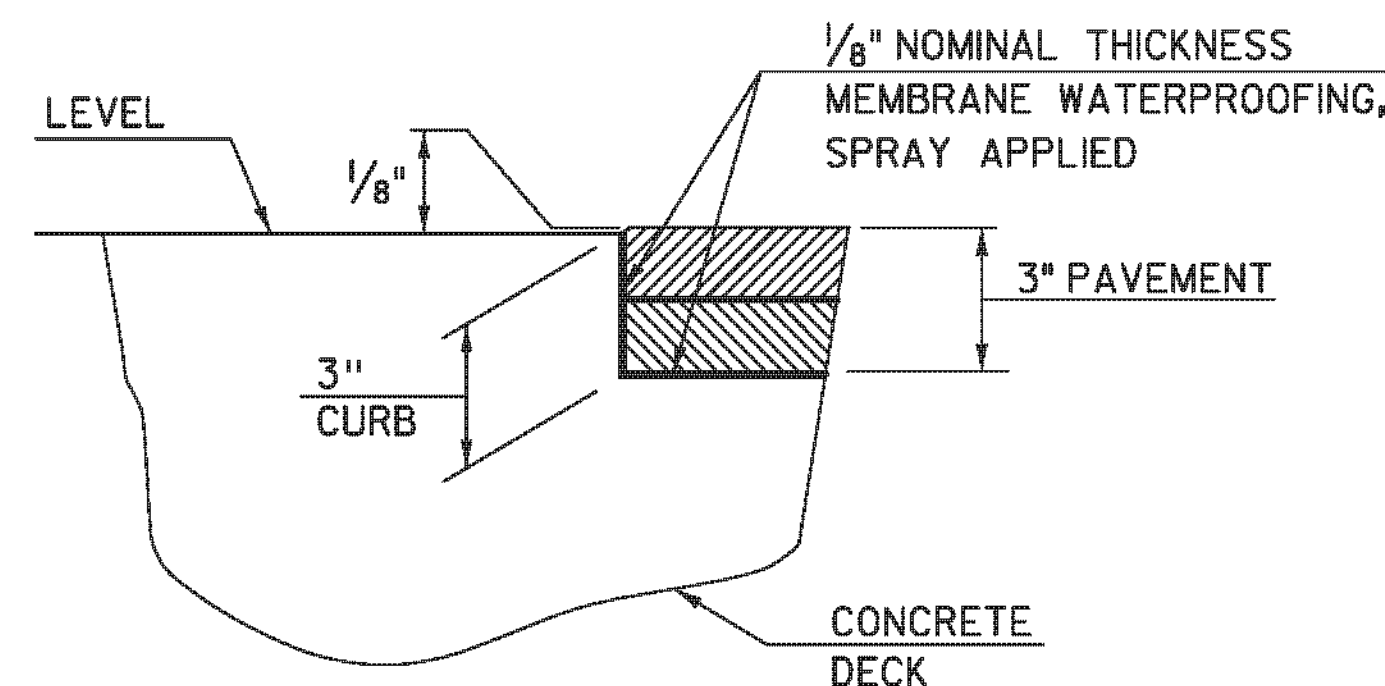
* JOINT IS TO BE LOCATED ACCURATELY BY STRING LINING, OR OTHER MEANS, PRIOR TO PAVING, SO THAT THE SAW CUTS WILL BE MADE DIRECTLY OVER THE END OF CONCRETE DECK. JOINT SHALL BE CUT DRY IN A SINGLE PASS AND BE SEALED WITHIN 24 HOURS OR PRIOR TO EXPOSURE TO TRAFFIC. JOINT SHALL BE CLEANED PRIOR TO APPLYING THE JOINT SEALER.



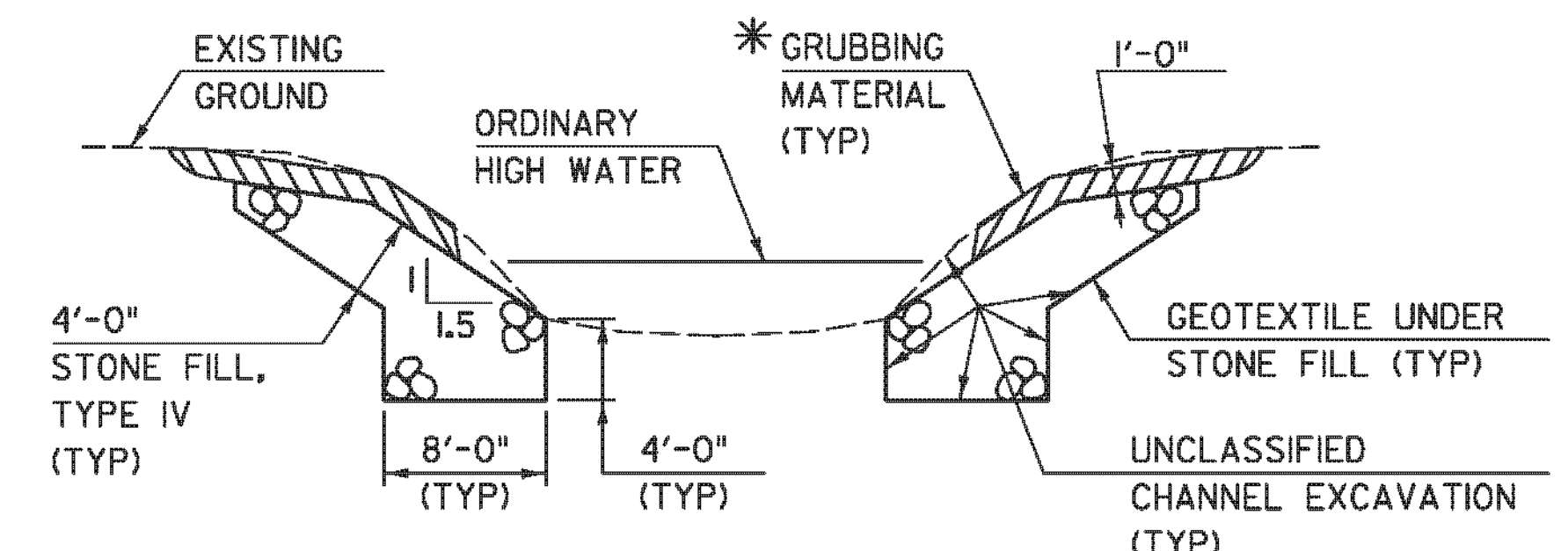
EARTHWORK TYPICAL SECTION
NOT TO SCALE

NOTES:

- ONE FT UNDERCUT AS DETERMINED NECESSARY BY THE ENGINEER.
- ACTUAL LIMITS OF STRUCTURE EXCAVATION TO BE DETERMINED BY THE CONTRACTOR. HOWEVER, ONLY THE EXCAVATION BETWEEN THE LIMITS SHOWN WILL BE PAID FOR UNDER ITEM 204.25, "STRUCTURE EXCAVATION." EXCAVATION BY THE CONTRACTOR OUTSIDE THESE LIMITS WILL BE AT THE EXPENSE OF THE CONTRACTOR.



DETAIL A
NOT TO SCALE
(LEFT CURB SHOWN
RIGHT CURB SIMILAR)



CHANNEL TYPICAL SECTION
(NOT TO SCALE)

* GRUBBING MATERIAL SHALL NOT BE PLACED ON THE STONE FILL IN THE AREA UNDER THE BRIDGE. WHENEVER CHANNEL SLOPE INTERSECTS ROADWAY SUBBASE, GRUBBING MATERIAL SHALL BEGIN AT THE BOTTOM OF SUBBASE.

TYLINTERNATIONAL

PROJECT NAME: CAVENDISH
PROJECT NUMBER: ER BRF 0146(13)

FILE NAME: zllc318bdr+yp.dgn
PROJECT LEADER: J. OLUND
DESIGNED BY: J. OLUND
BRIDGE, EARTHWORK, & CHANNEL SECTIONS

PLOT DATE: 7/19/2013
DRAWN BY: S. MORGAN
CHECKED BY: T. POULIN
SHEET 4 OF 49