

REHAB.
Dis. CBs OR Mhs. CLASS I, II OR III
SEE SHEETS 27-28

CHANGING ELEVATION OF SEWER MANHOLES
SEE SHEET 28

STEEL BEAM GUARDRAIL, GALVANIZED
STA. 120+34.0 TO 120+59.0, RT

STEEL BEAM GUARDRAIL, GALVANIZED
W/B FEET POSTS
STA. 120+59.0 TO 123+00.0, RT

ANCHOR FOR STEEL BEAM RAIL
STA. 120+34.0, RT

REMOVAL AND DISPOSAL OF GUARDRAIL
STA. 120+43 TO 123+00, RT

VERTICAL GRANITE CURB
STA. 118+75 TO 119+41, RT

CAST-IN-PLACE CONCRETE CURB, TYPE B
STA. 119+53, RT

REMOVAL OF EXISTING CURB
STA. 118+75, LT
STA. 119+53, RT

PORTLAND CEMENT
CONCRETE SIDEWALK, 5 INCH
STA. 118+75 TO 119+41, RT
STA. 118+75, LT
STA. 119+41, RT (CONCORD AVE.)
STA. 119+53, RT (CONCORD AVE.)

DETECTABLE WARNING SURFACE
STA. 118+75, LT
STA. 118+75, RT
STA. 119+41, RT
STA. 119+53, RT (CONCORD AVE.)
SEE SHEETS 28-29

RAILROAD CROSSING SYMBOL
STA. 119+64, RT (CONCORD AVE.)

DURABLE & TEMPORARY 4 INCH WHITE LINE
(ALL LINES WILL INCLUDE EDGE LINE BREAKS
AND RADII FOR SIDE ROADS)
STA. 118+00 TO 123+00, SOLID LT & RT
STA. 119+64, SOLID RT (EDGLINES, CONCORD AVE.)

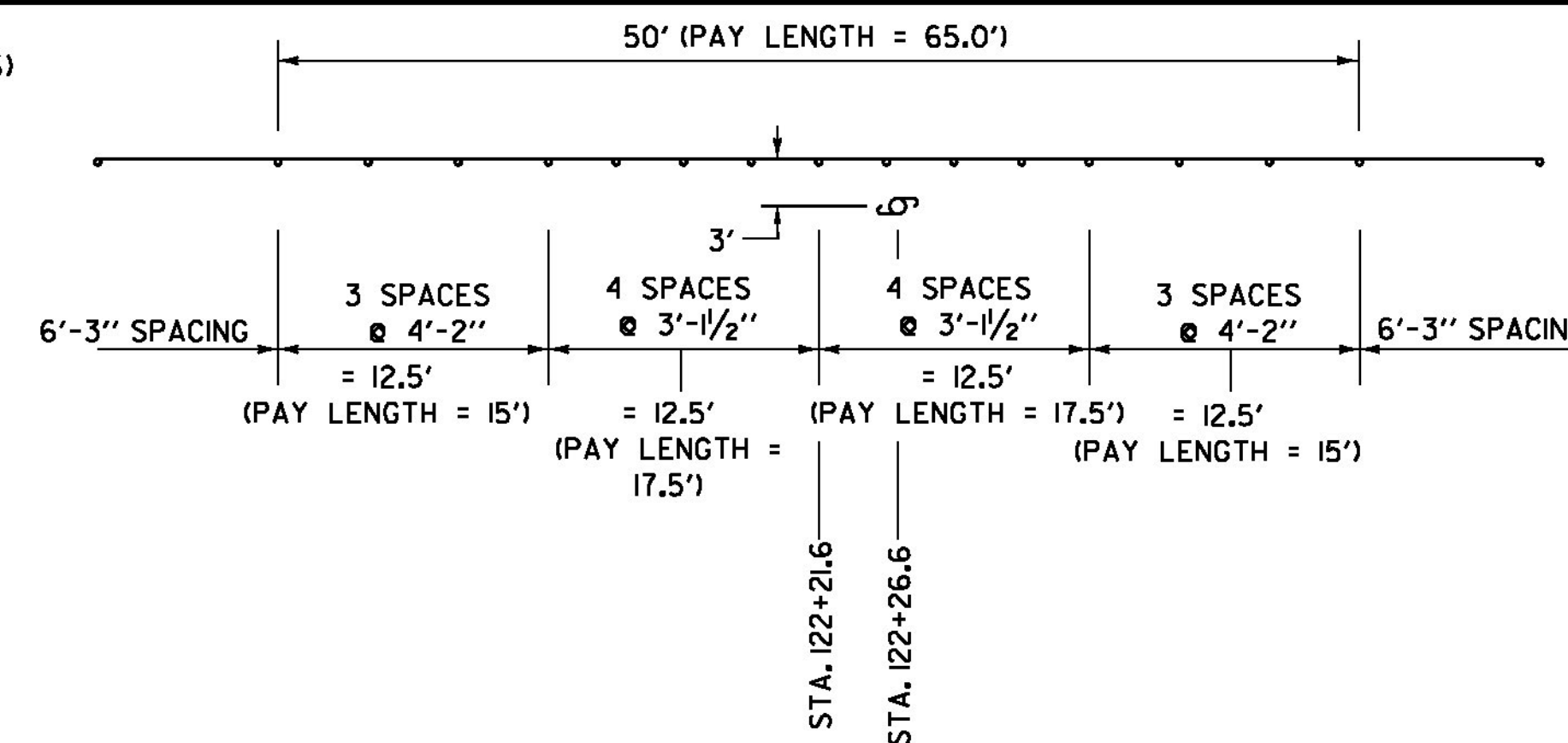
DURABLE & TEMPORARY 4 INCH YELLOW LINE
(ALL LINES WILL INCLUDE E BREAKS FOR SIDE ROADS)
STA. 118+00 TO 118+61, SOLID LT & RT
STA. 119+16, DOUBLE SOLID LT (MAIN ST. TH-404)
STA. 119+64, DOUBLE SOLID RT (CONCORD AVE.)
STA. 120+41 TO 123+00, SOLID LT & RT

DURABLE & TEMPORARY 24 INCH STOP BAR
STA. 118+60, RT
STA. 119+16, LT (MAIN ST. TH-404)
STA. 119+64, RT (CONCORD AVE.)
STA. 120+42, LT

DURABLE CROSSWALK MARKING, TYPE A TAPE
STA. 118+75, LT - RT
STA. 119+44 TO 119+53, RT (MILL ST.)
SEE SHEET 55 (TYP.)

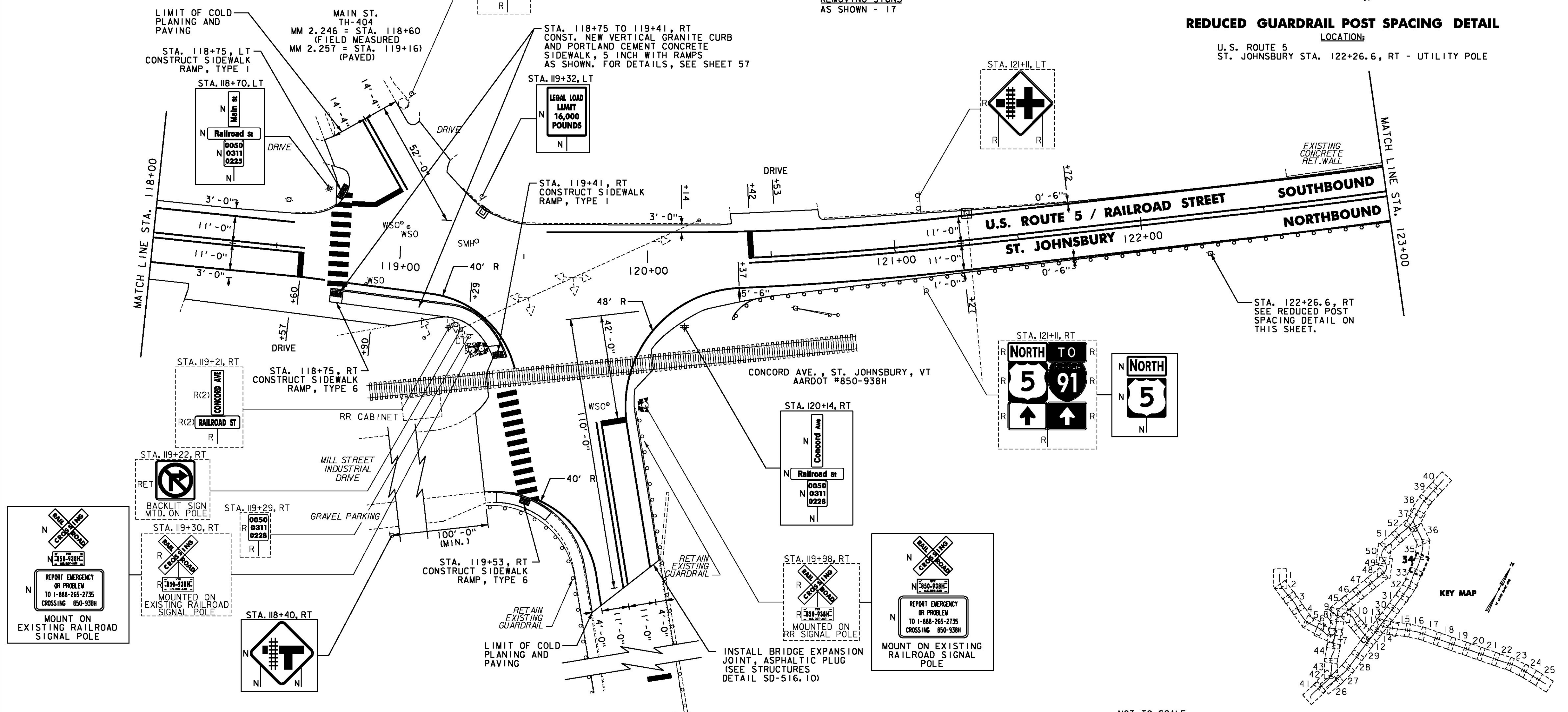
TEMPORARY CROSSWALK MARKING, PAINT
STA. 118+75, LT - RT
STA. 119+44 TO 119+53, RT (MILL ST.)
SEE SHEET 55 (TYP.)

REMOVING SIGNS
AS SHOWN - 17

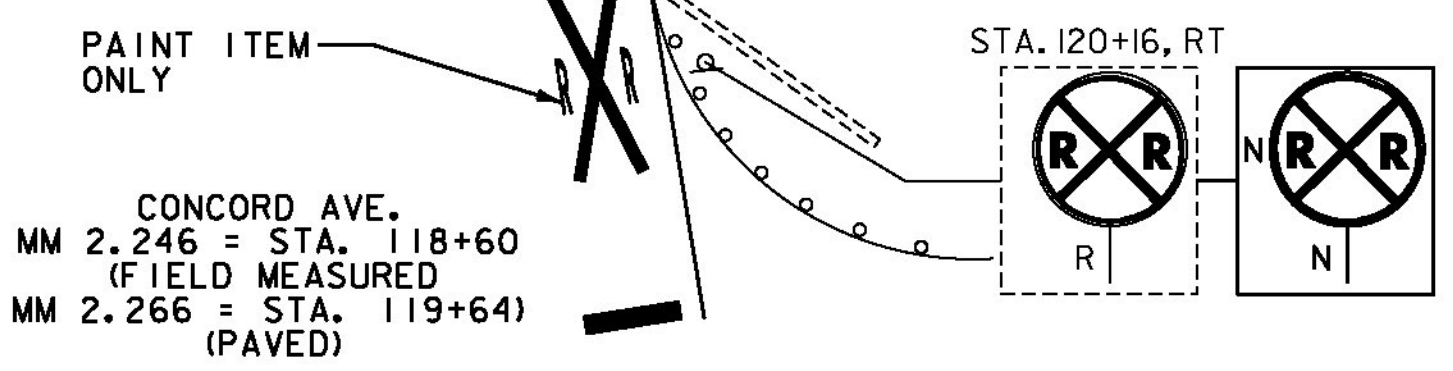


REDUCED GUARDRAIL POST SPACING DETAIL

LOCATION:
U.S. ROUTE 5
ST. JOHNSBURY STA. 122+26.6, RT - UTILITY POLE



- NOTES:
- FOR LEGENDS, SEE SHEET 3.
 - ALL EXISTING SIGNS NOT SHOWN ON THE PLANS SHALL BE RETAINED.
 - SEE SHEETS 36-40 FOR RAILROAD CROSSING DETAILS.
 - SEE SHEET 243 FOR TRAFFIC SIGNAL DETAILS.



PROJECT LAYOUT SHEET #34	PROJECT NAME: ST JOHNSBURY - LYNDON	PLOT DATE: 5/5/2014
	PROJECT NUMBER: STP 2936(1)	DRAWN BY: D. DRAPER
	FILE NAME: pllc308.dgn	DESIGNED BY: D. DRAPER
		CHECKED BY: J. LITTLE
		SHEET 96 OF 250