

REHAB.  
DIs, CBs OR MHS, CLASS I, II OR III  
SEE SHEETS 27-28

ADJUST ELEVATION OF VALVE BOX  
SEE SHEETS 28-29

DURABLE & TEMPORARY 4 INCH WHITE LINE  
(ALL LINES WILL INCLUDE EDGE LINE BREAKS  
AND RADI1 FOR SIDE ROADS)  
STA. 70+59.36 TO 75+00, SOLID LT & RT

DURABLE & TEMPORARY 4 INCH YELLOW LINE  
(ALL LINES WILL INCLUDE  $\phi$  BREAKS FOR SIDE ROADS)  
STA. 70+59.36 TO 72+27, SOLID LT & RT  
STA. 72+27 TO 74+37, DOUBLE SOLID LT & RT  
STA. 74+37 TO 75+00, SOLID LT & RT

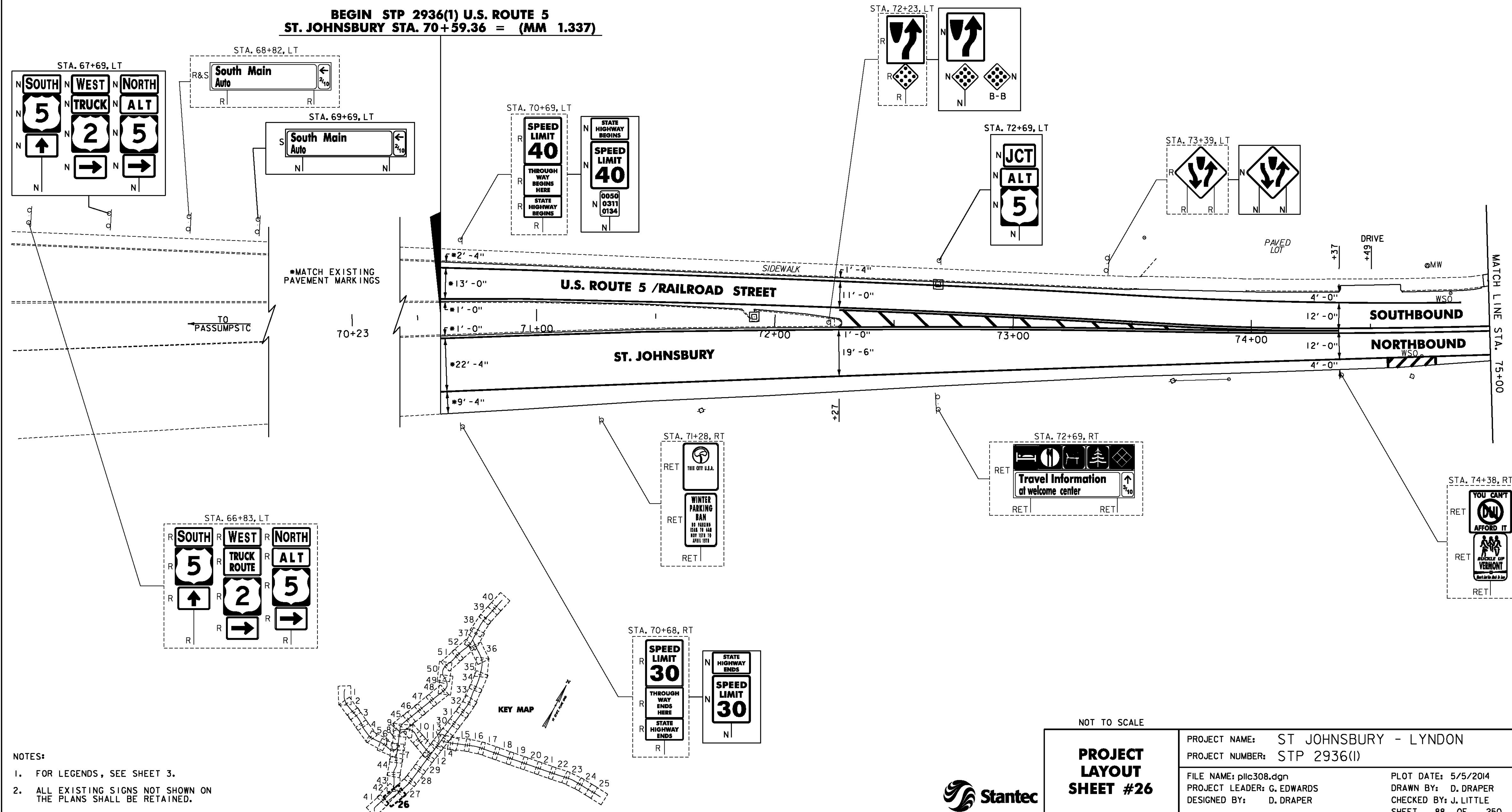
DURABLE & TEMPORARY 8 INCH WHITE LINE  
STA. 74+57 TO 74+77, RT (HYDRANT)  
SEE SHEET 55

DURABLE & TEMPORARY 8 INCH YELLOW LINE  
STA. 72+27 TO 74+37, LT & RT (DIAGONALS)  
SEE SHEET 55

REMOVING SIGNS  
AS SHOWN - 21

ERECTING SALVAGED SIGNS  
AS SHOWN - 1

**BEGIN STP 2936(1) U.S. ROUTE 5  
ST. JOHNSBURY STA. 70+59.36 = (MM 1.337)**



- NOTES:
- FOR LEGENDS, SEE SHEET 3.
  - ALL EXISTING SIGNS NOT SHOWN ON THE PLANS SHALL BE RETAINED.

NOT TO SCALE

**PROJECT LAYOUT SHEET #26**



PROJECT NAME: ST JOHNSBURY - LYNDON  
PROJECT NUMBER: STP 2936(1)

FILE NAME: pllc308.dgn  
PROJECT LEADER: G. EDWARDS  
DESIGNED BY: D. DRAPER

PLOT DATE: 5/5/2014  
DRAWN BY: D. DRAPER  
CHECKED BY: J. LITTLE  
SHEET 88 OF 250